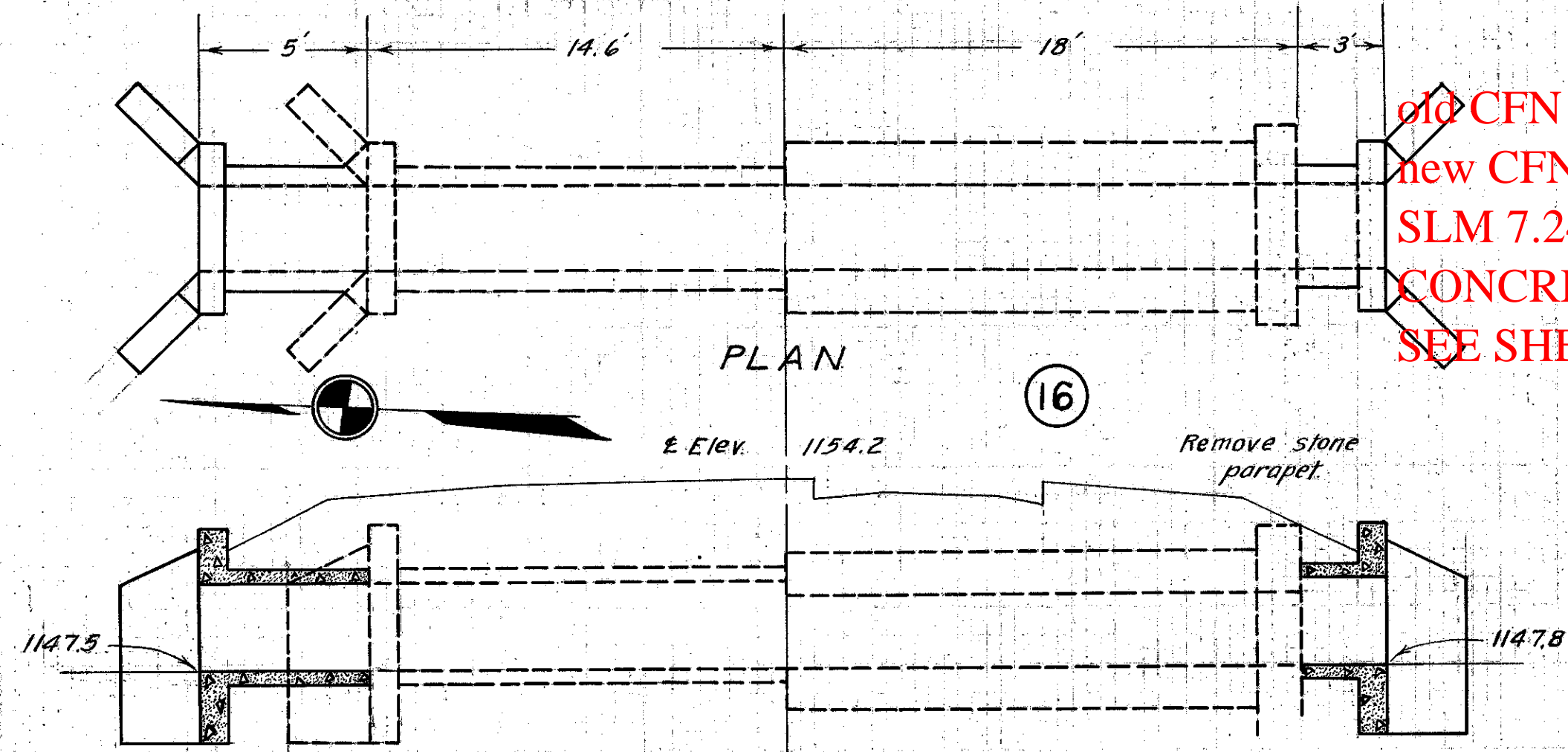


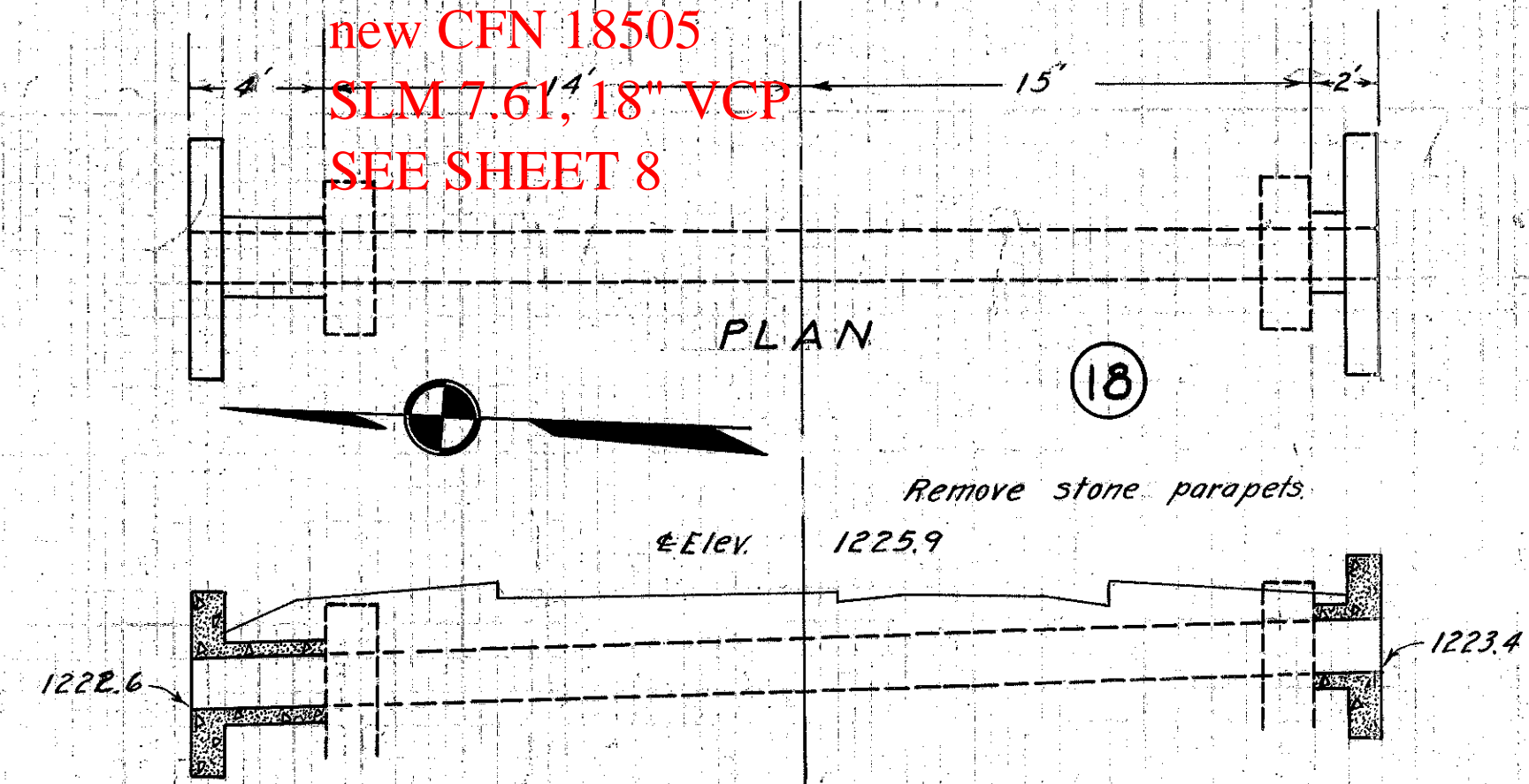
15 BRIDGE STA. 215 + 08.5  
40' x 16' Std. Thru Girder  
See Sheets Number 34-35-36



old CFN 283220724  
new CFN 1828495  
SLM 7.24, 3'x3'  
CONCRETE BOX  
SEE SHEET 7

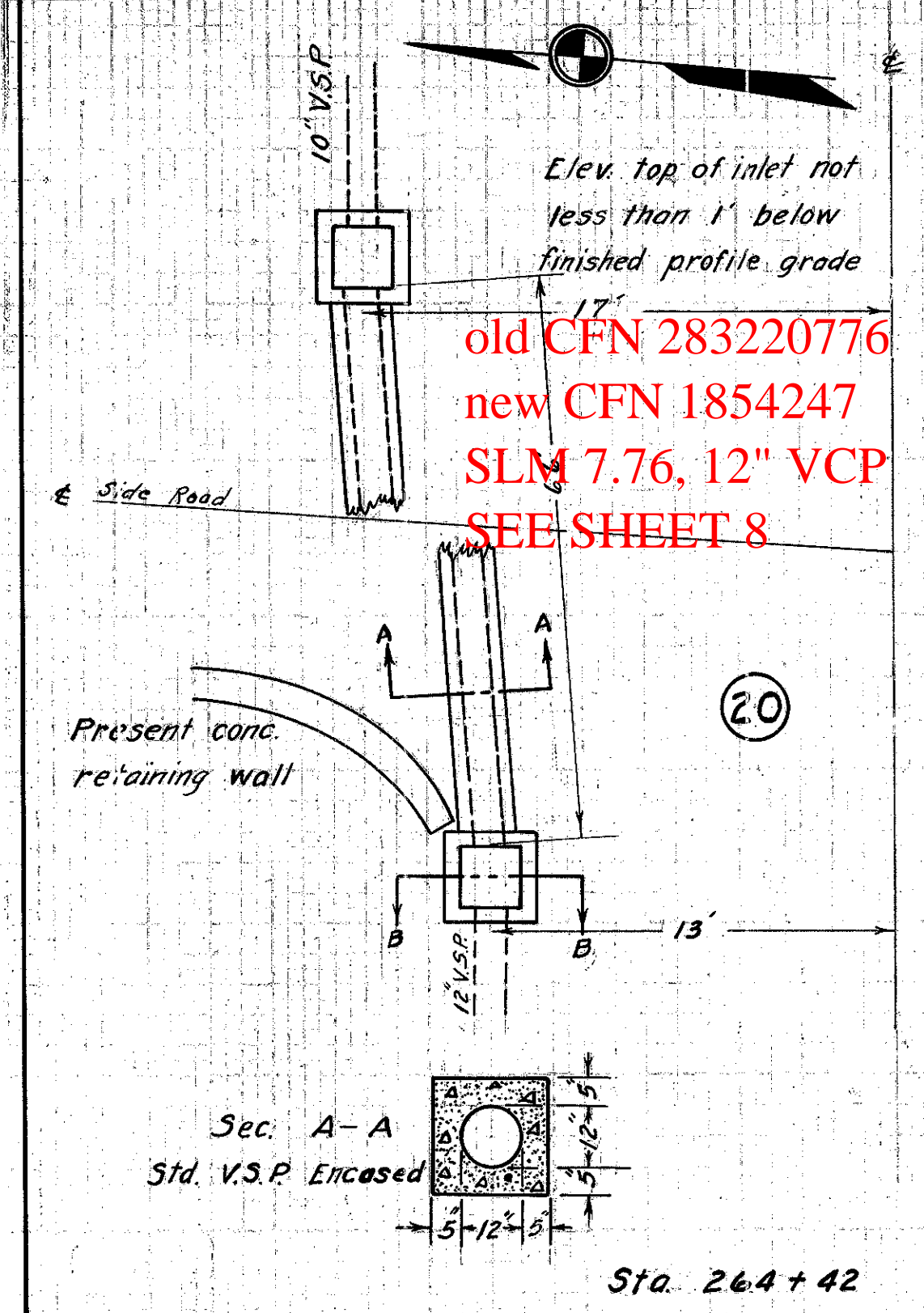
|                                  |                              |                        |                           |
|----------------------------------|------------------------------|------------------------|---------------------------|
| <b>CULVERT DATA</b>              |                              | <b>EST. QUANTITIES</b> |                           |
| Type: Std. Box Culvert Dr. 301   | Size: 3' x 3'                | Excav. 19.0 cu.yds.    | Conc. 1-5 1/2 7.7 cu.yds. |
| Work Req. Extend 5' Lt. + 3' Rt. | Drawn by R.E.F. Date 4/15/27 | Reinf. Steel 212 lbs.  | Dowels 16 complete        |
| Checked by C.E.W. Date 7-15-27   | Div'n. Engr. L.C. Breen      | Sta. 236 + 75          |                           |

old CFN 283220761  
new CFN 18505  
SLM 7.61, 18" VCP  
SEE SHEET 8



|                                     |                              |                        |                           |
|-------------------------------------|------------------------------|------------------------|---------------------------|
| <b>CULVERT DATA</b>                 |                              | <b>EST. QUANTITIES</b> |                           |
| Type: Std. V.S.P. Culvert. Dr. 300. | Size: 18"                    | Excav. 10.0 cu.yds.    | Conc. 1-5 1/2 2.7 cu.yds. |
| Work Req. Extend 4' Lt. + 2' Rt.    | Drawn by R.E.F. Date 4/15/27 | Reinf. Steel 80 lbs.   | 18" V.S.P. 6 lin. ft.     |
| Checked by C.E.W. Date 7-15-27      | Div'n. Engr. L.C. Breen      | Dowels complete B      |                           |
| Sta. 256 + 50                       |                              |                        |                           |

old CFN 283220776  
new CFN 1854247  
SLM 7.76, 12" VCP  
SEE SHEET 8



1' CH 15 SEC. -H, GAUGA COUNTY

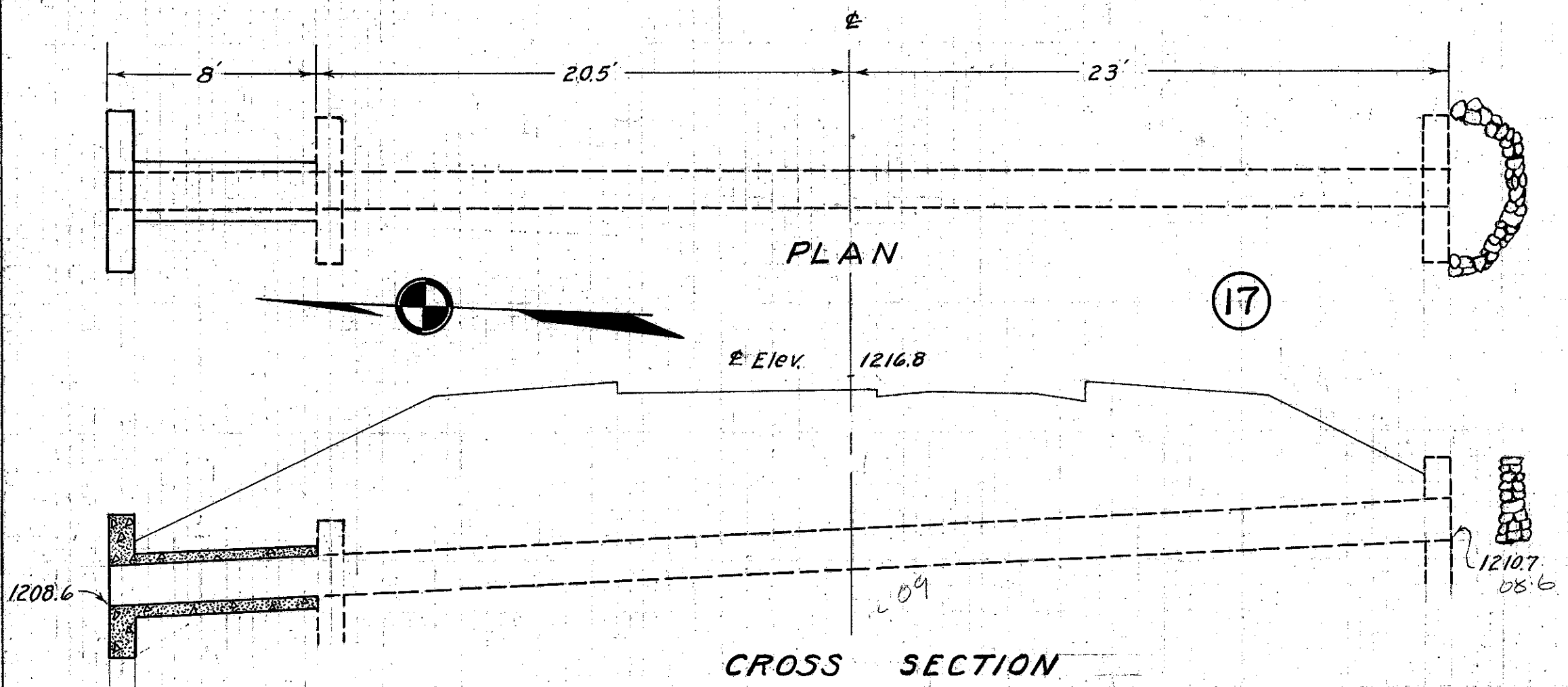
**CULVERT DATA**

Type: Special side road culvert  
Size: 12" x 66"  
Work Req. Remove old catch basin and pipe, build special catch basins and lay Std. V.S.P. encased.

**EST. QUANTITIES**

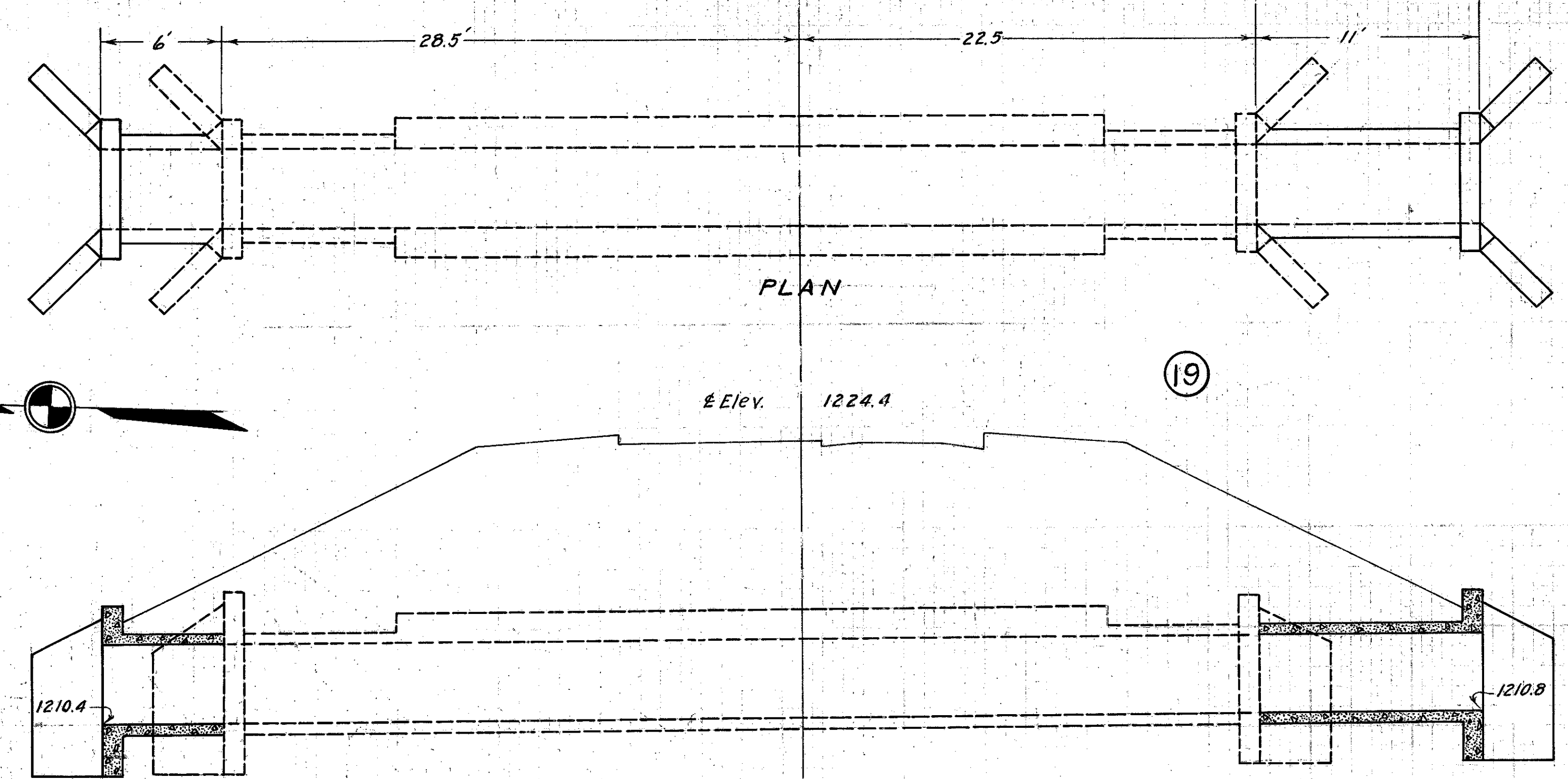
|                         |              |
|-------------------------|--------------|
| Excav.                  | 40.0 cu.yds. |
| Conc. 1-5 1/2           | 1.4 cu.yds.  |
| Conc. 1-8               | 7.1 cu.yds.  |
| Special Inlets Complete | 2 only       |
| 12" V.S.P.              | 66 Lin. ft.  |

Drawn by R.E.F. Date 4/18/27  
Checked by C.E.W. Date 7-15-27  
Div'n. Engr. L.C. Breen



|                                     |                              |                        |                           |
|-------------------------------------|------------------------------|------------------------|---------------------------|
| <b>CULVERT DATA</b>                 |                              | <b>EST. QUANTITIES</b> |                           |
| Type: Std. V.S.P. Culvert. Dr. 300. | Size: 15"                    | Excav. 6.0 cu.yds.     | Conc. 1-5 1/2 1.2 cu.yds. |
| Work Req. Extend Lt. 8'             | Drawn by R.E.F. Date 4/15/27 | Conc. 1-8 0.9 cu.yd.   | Reinf. Steel 35 lbs.      |
| Checked by C.E.W. Date 7-15-27      | Div'n. Engr. L.C. Breen      | 15" V.S.P. 8 lin. ft.  |                           |
| Sta. 251 + 40                       |                              |                        |                           |

Could not locate.  
Removed from inventory



|                                   |                              |                        |                            |
|-----------------------------------|------------------------------|------------------------|----------------------------|
| <b>CULVERT DATA</b>               |                              | <b>EST. QUANTITIES</b> |                            |
| Type: Std. Box Culvert. Dr. 301   | Size: 4' x 4'                | Excav. 32.0 cu.yds.    | Conc. 1-5 1/2 15.0 cu.yds. |
| Work Req. Extend 6' Lt. + 11' Rt. | Drawn by R.E.F. Date 4/16/27 | Reinf. Steel 533 lbs.  | Dowels 24 complete         |
| Checked by C.E.W. Date 7-15-27    | Div'n. Engr. L.C. Breen      | Sta. 262 + 50          |                            |

old CFN 283220771  
new CFN 1853144  
REPLACED IN 1962  
UNDER GEA-322-7.72