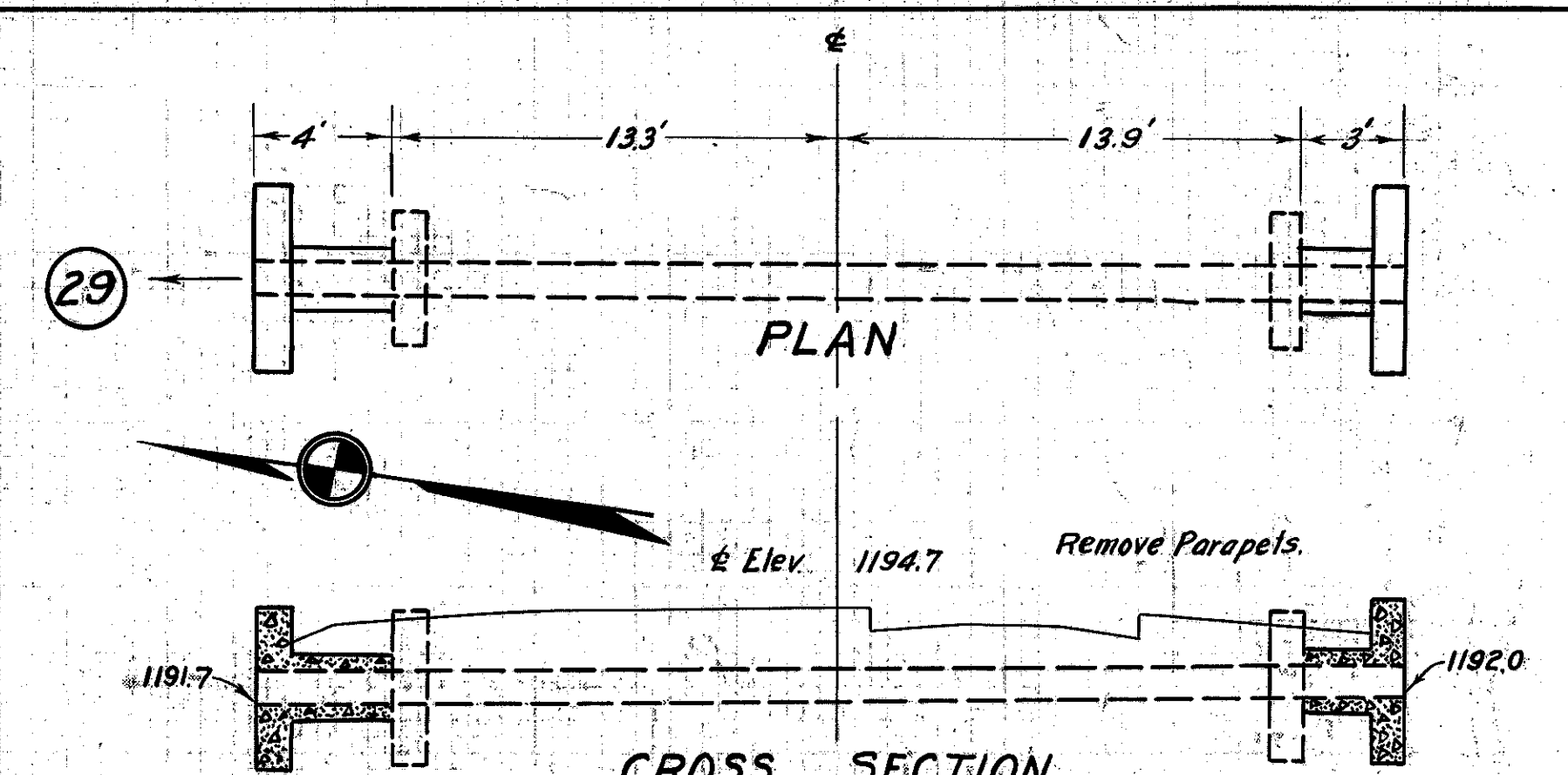


old CFN 283220959  
new CFN 1827357  
SLM 9.59, 3'x1.5'  
CONCRETE BOX  
SEE SHEET 11

<b>CULVERT DATA</b>		<b>EST. QUANTITIES</b>	
Type: Std. Box Culvert	Dr. #301	Excav.	0.0 cu.yds.
Size: 3'x1.5'		Conc. 1-5 1/2	4.7 cu.yds.
Work Req. Extend 4'Lt. & 3'Rt.		Reinf. Steel	194 lbs.
Drawn by R.E.F.		Dowels	16 (complete)
Date 4/21/27			
Checked by C.E.W.			
Date 7/15/27	Div'n. Engr.		

Sta. 360+75



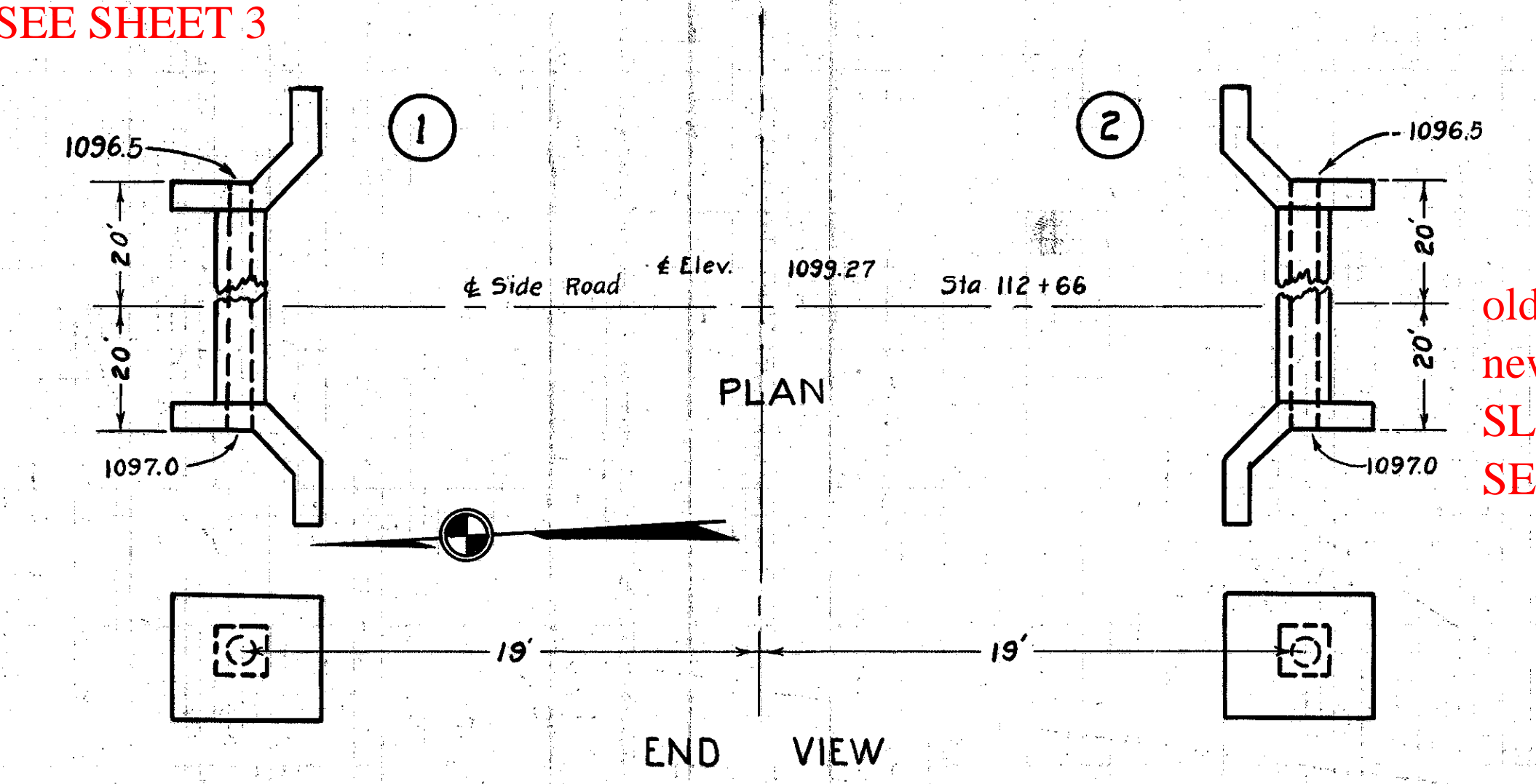
old CFN 283220985  
new CFN 1852057  
SLM 9.85, 12" VCP  
SEE SHEET 12

<b>CULVERT DATA</b>		<b>EST. QUANTITIES</b>	
Type: Std. VSP Culvert	Dr. #300	Excav.	6.0 cu.yds.
Size: 12"		Conc. 1-5 1/2	2.0 cu.yds.
Work Req. Extend 4'Lt. & 3'Rt.		Conc. 1-8	0.5 cu.yd.
Drawn by R.E.F.		Reinf. Steel	65 lbs.
Date 4/21/27		12" V.S.P.	8 Lin. ft.
Checked by C.E.W.		Dowels	8 (complete)
Date 7/15/27	Div'n. Engr.		

Sta. 374+77

BRIDGE STA. 398+87  
10' x 20' CONC. SLAB  
See Sheet No. 33

old CFN 283220490  
new CFN 1832370  
SLM 4.89, 12"  
SEE SHEET 3



old CFN 283220489  
new CFN 1832369  
SLM 4.89, 12"  
SEE SHEET 3

<b>EST. QUANTITIES No. 1</b>		<b>CULVERT DATA</b>		<b>EST. QUANTITIES No. 2</b>	
Excav.	20.0 cu.yds.	Type: Std. Side Road Culvert		Excav.	20.0 cu.yds.
Conc. 1-5 1/2	2.6 cu.yds.	Dr. #300		Conc. 1-5 1/2	2.6 cu.yds.
Conc. 1-8	4.1 cu.yds.	Size 12" x 40'		Conc. 1-8	4.1 cu.yds.
Reinf. Steel	60 lbs.	Work Req. Build 2 new culverts.		Reinf. Steel	60 lbs.
12" V.S.P.	40 lin. ft.	Drawn by R.E.F.		12" V.S.P.	40 lin. ft.
		Date 5/4/27			
		Checked by C.E.W.			
		Date 7/15/27	Div'n. Engr.		

Sta. 112+66