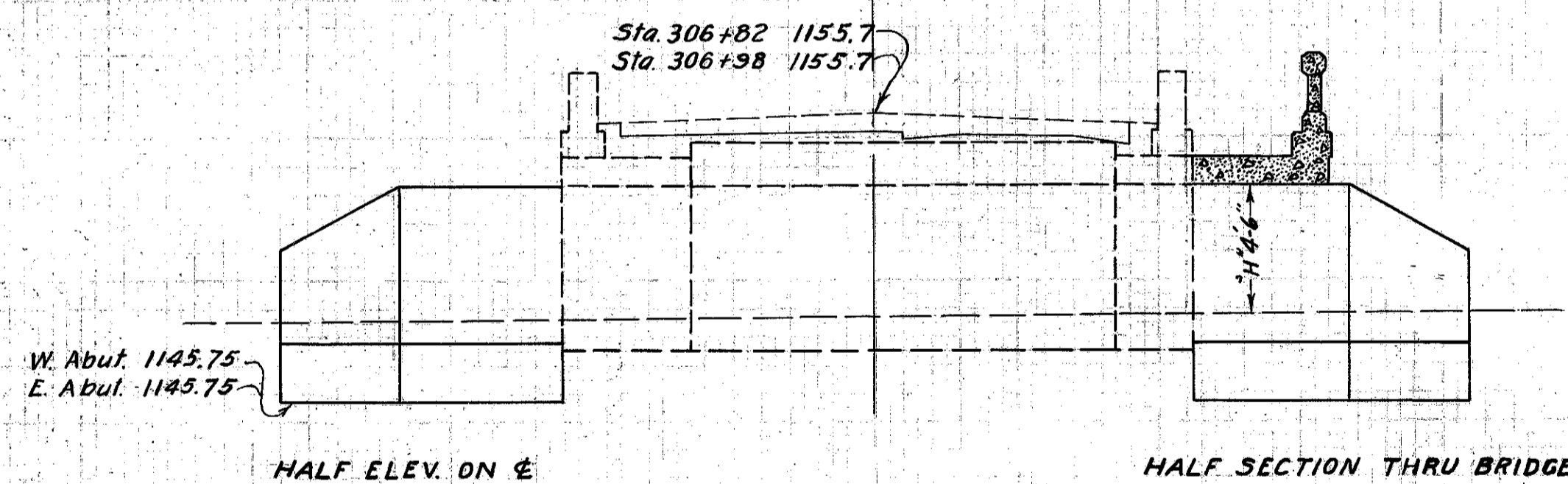


24



BRIDGE DATA

Type: Std. Slab Bridge Dr. #302-1
 Size: Span 16' Rdy. 30' H. 4'-6"
 Work Req. Remove old railing and curb. Extend 4' 11" + 3.8' r/d. with std. 16' slab bridge.

Drawn by R.E.F.
 Date 5/16/27

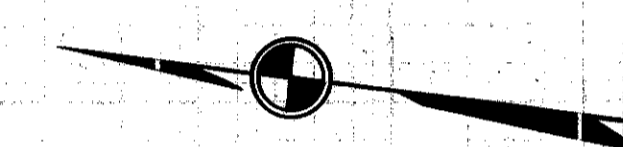
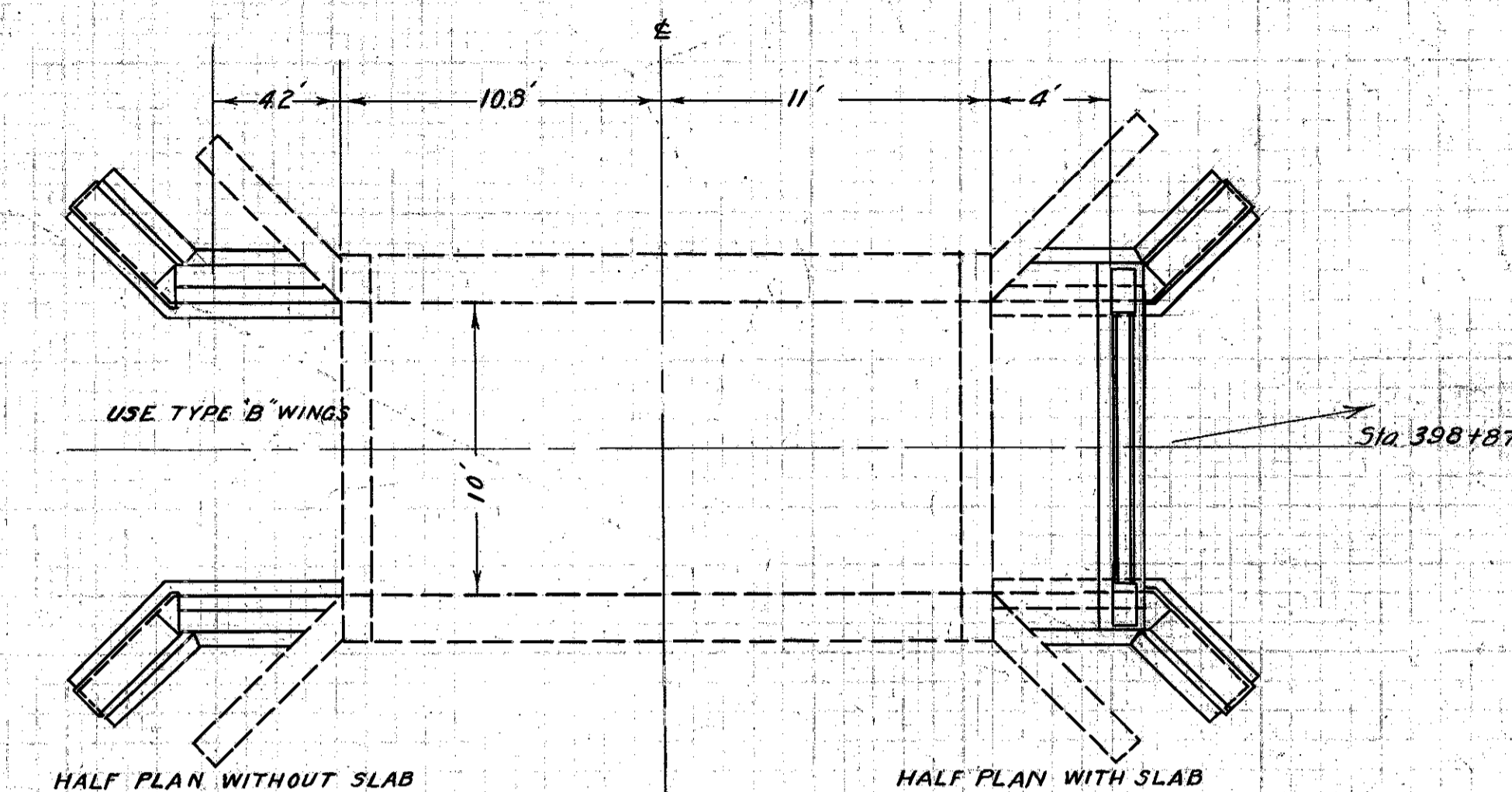
Checked by C.E.W.
 Date 7-15-27

Div'n. Engr.
 L.G. Breen

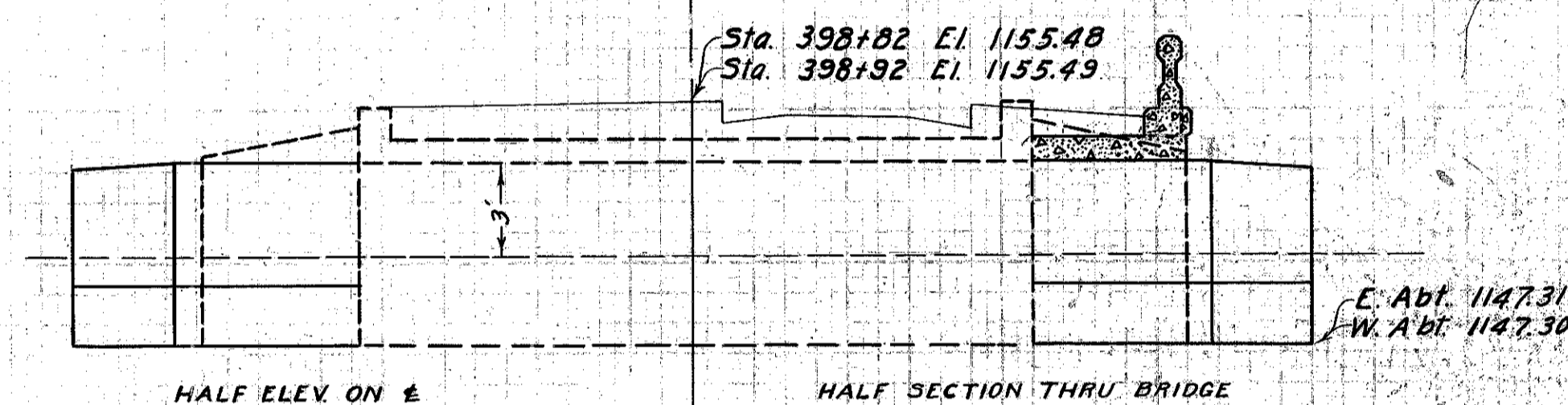
EST. QUANTITIES

Excav. 370 cu. yds.
 Conc. 1-5 1/2 8.0 cu. yds.
 Conc. 1-6 1/2 12.9 cu. yds.
 Conc. 1-8 8.0 cu. yds.
 Type "G" Railing 36 lin. ft.
 Reinf. Steel 832 lbs.
 Dowels 42 complete
 Remove Curb 58 Lin. ft.

Sta. 306+90



30



BRIDGE DATA

Type: Std. Slab Bridge Drawing No. 302-1
 Size: Span 10' H-3'
 Work Req. Extend 4' Ft. + 4.2' L. Remove old parapets.
 Drawn by R.E.F.
 Date 5/10/27
 Checked by C.E.W.
 Date 7/15-27

Div'n Engr.
 L.G. Breen

EST. QUANTITIES

Excav. 24.0 cu. yds.
 Conc. 1-5 1/2 4.4 cu. yds.
 Conc. 1-6 1/2 8.2 cu. yds.
 Conc. 1-8 6.3 cu. yds.
 Type "G" Railing 24 Lin. ft.
 Reinf. Steel 475 lbs.
 Dowels 28 complete
 Remove Curb 24 Lin. ft.
 Sta. 398+87