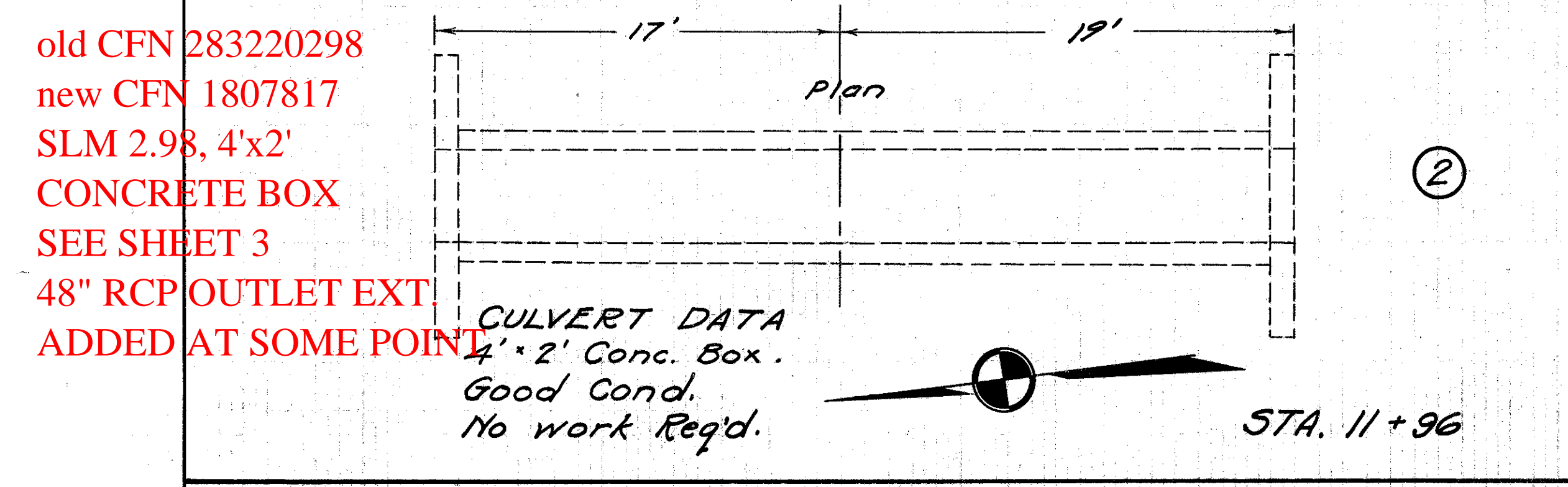


SLM 2.75, CULVERT WAS REPLACED WITH 18" STORM SEWER

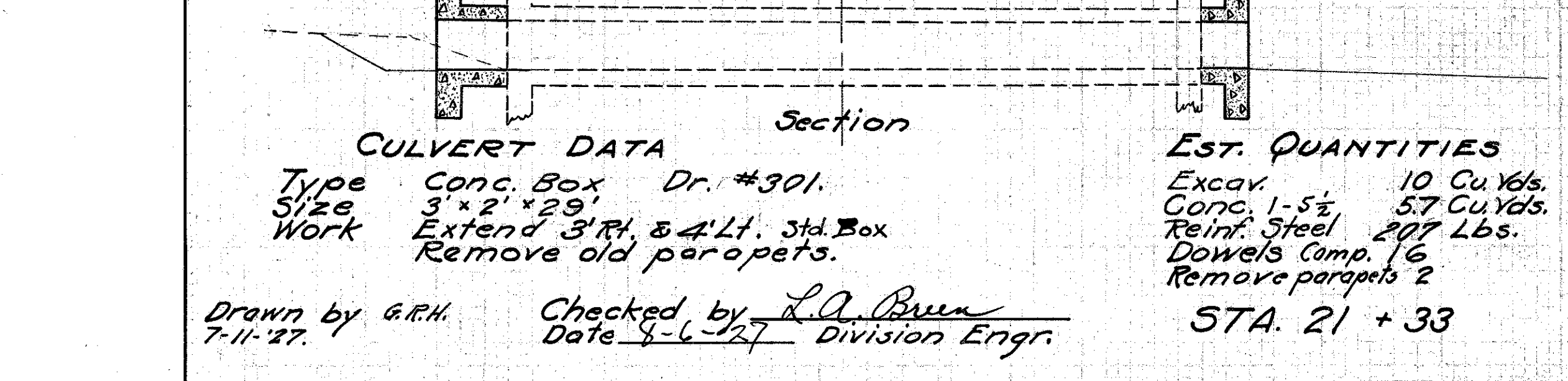
STA. 0 + 15
2' x 2' Stone box culvert with Conc. extensions.
Good condition
Length 6 1/2'
No work Req'd



old CFN 283220298
new CFN 1807817
SLM 2.98, 4'x2' CONCRETE BOX
SEE SHEET 3
48" RCP OUTLET EXT. ADDED AT SOME POINT

CULVERT DATA
4' x 2' Conc. Box.
Good Cond.
No work Req'd.

STA. 11 + 96

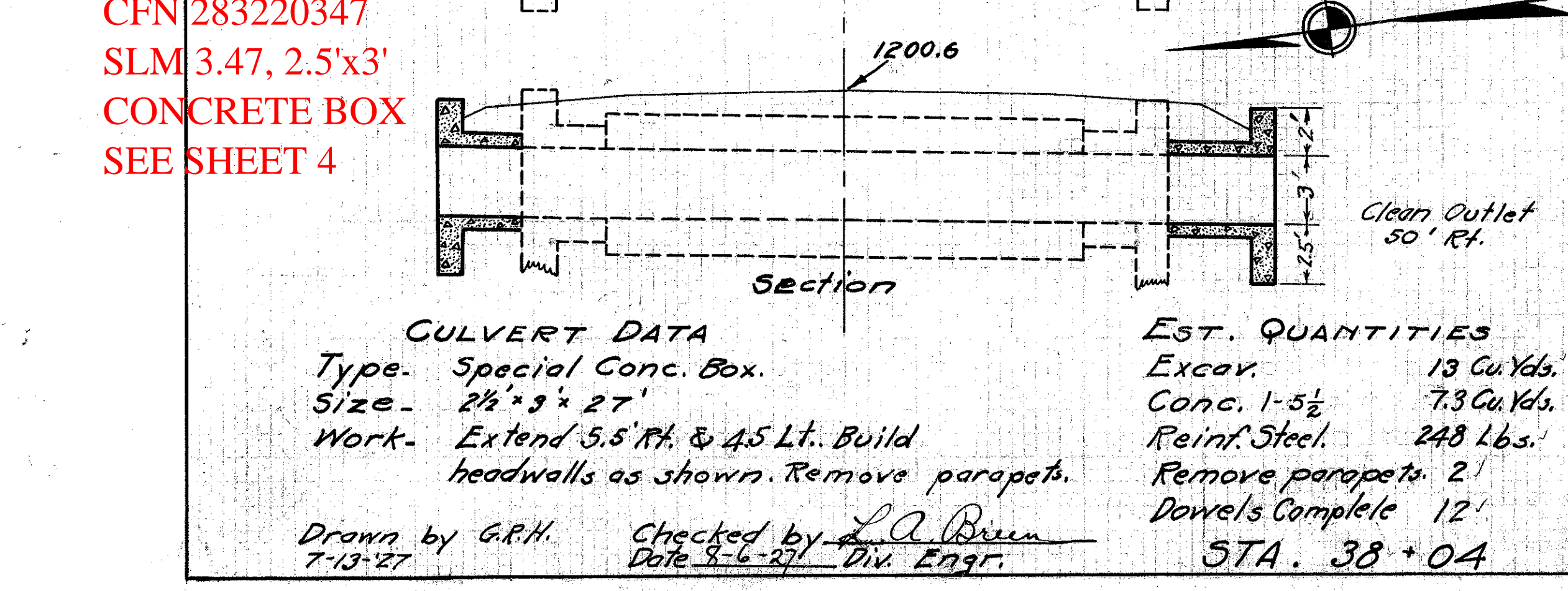


old CFN 283220315
new CFN 1807818
SLM 3.15, 3'x2' CONCRETE BOX
SEE SHEET 3
24" CMP AND CB ADDED AT INLET AT SOME POINT

CULVERT DATA
Type Conc. Box Dr. #300.
Size 3' x 2' x 29'.
Work Extend 3' Rt. & 4' Lt. Std. Box. Remove old parapets.

EST. QUANTITIES
Excav. 10 Cu. Yds.
Conc. 1-5 1/2 57 Cu. Yds.
Reinf. Steel 207 Lbs.
Dowels Comp. 16
Remove parapets 2

STA. 21 + 33

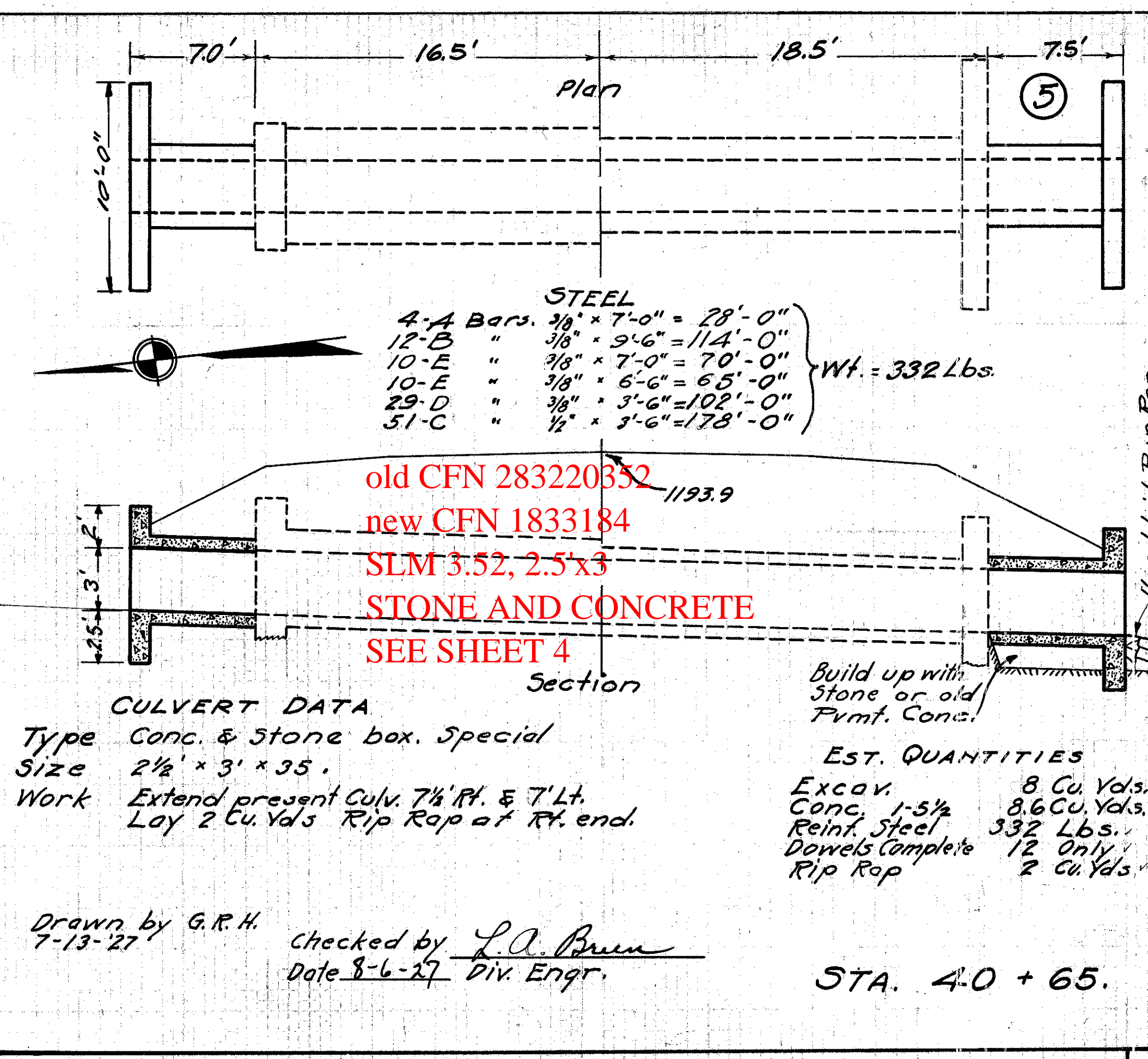


CFN 283220347
SLM 3.47, 2.5'x3' CONCRETE BOX
SEE SHEET 4

CULVERT DATA
Type Special Conc. Box.
Size 2 1/2' x 3' x 27'.
Work Extend 5.5' Rt. & 4.5' Lt. Build headwalls as shown. Remove parapets.

EST. QUANTITIES
Excav. 13 Cu. Yds.
Conc. 1-5 1/2 7.3 Cu. Yds.
Reinf. Steel 248 Lbs.
Remove parapets 2
Dowels Complete 12'

STA. 38 + 04

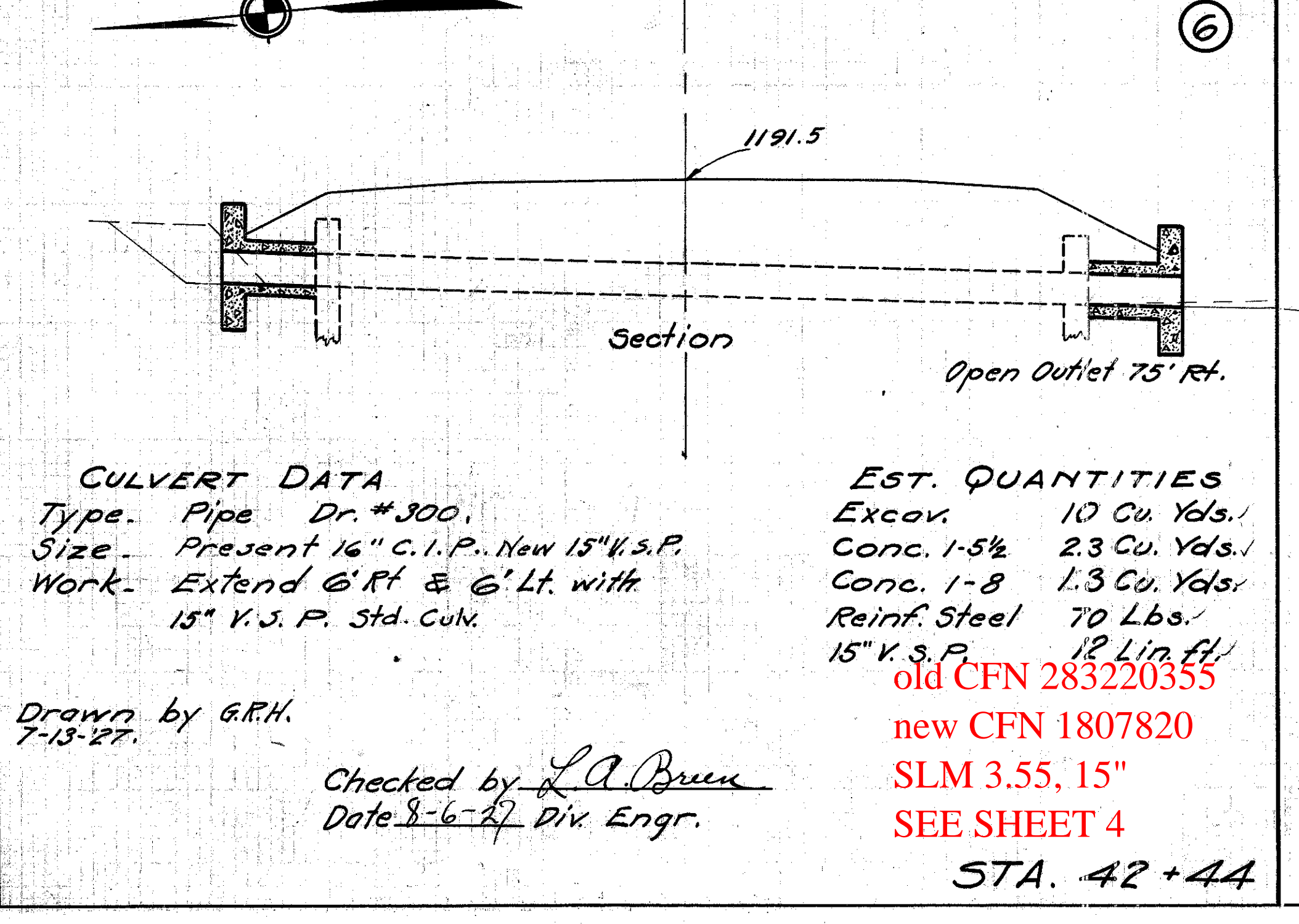


old CFN 283220352
new CFN 1833184
SLM 3.52, 2.5'x3' STONE AND CONCRETE
SEE SHEET 4

CULVERT DATA
Type Conc. & Stone box. Special
Size 2 1/2' x 3' x 35'.
Work Extend present Culv. 7 1/2' Rt. & 7' Lt. Lay 2 Cu. Yds Rip Rap at Rt. end.

EST. QUANTITIES
Excav. 8 Cu. Yds.
Conc. 1-5 1/2 8.6 Cu. Yds.
Reinf. Steel 332 Lbs.
Dowels Complete 12 Only
Rip Rap 2 Cu. Yds.

STA. 40 + 65.

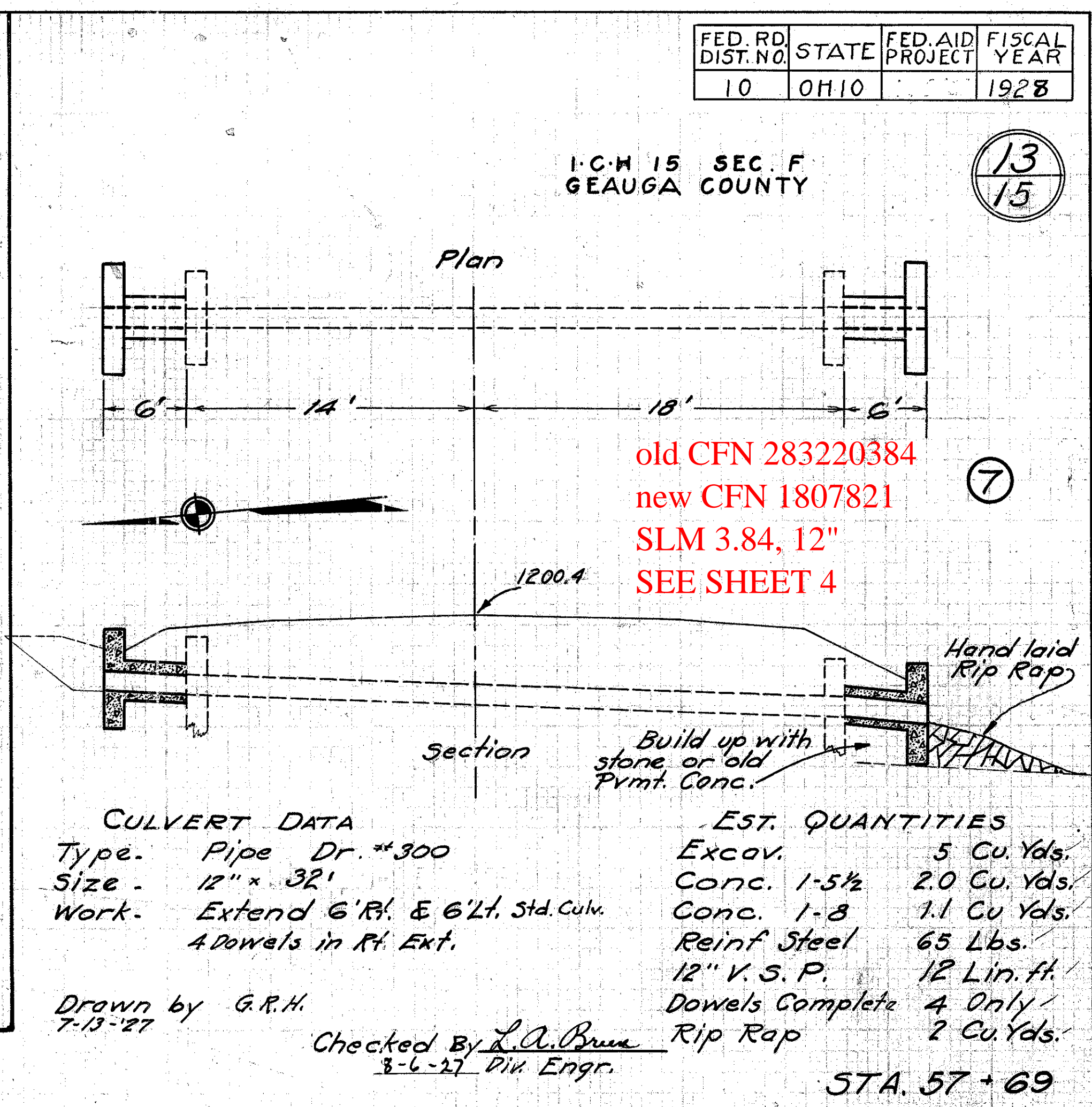


old CFN 283220355
new CFN 1807820
SLM 3.55, 15" SEE SHEET 4

CULVERT DATA
Type Pipe Dr. #300.
Size Present 16" C.I.P.. New 15" V.S.P.
Work Extend 6' Rt. & 6' Lt. with 15" V.S.P. Std. Culv.

EST. QUANTITIES
Excav. 10 Cu. Yds.
Conc. 1-5 1/2 2.3 Cu. Yds.
Conc. 1-8 1.3 Cu. Yds.
Reinf. Steel 70 Lbs.
15" V.S.P. 12 Lin. Ft.

STA. 42 + 44

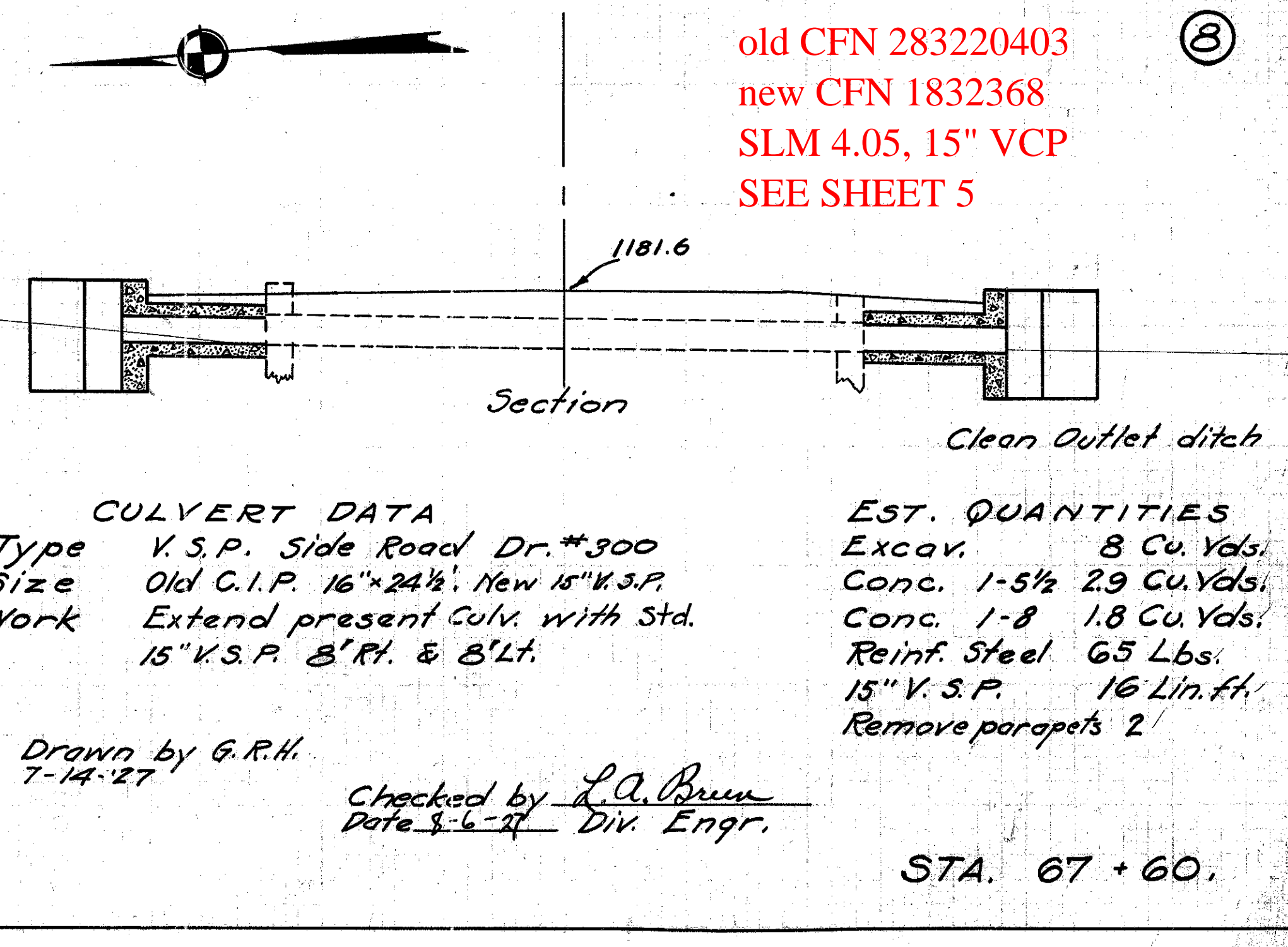


old CFN 283220384
new CFN 1807821
SLM 3.84, 12" SEE SHEET 4

CULVERT DATA
Type Pipe Dr. #300
Size 12" x 32'
Work Extend 6' Rt. & 6' Lt. Std. Culv. 4 Dowels in Rt. Ext.

EST. QUANTITIES
Excav. 5 Cu. Yds.
Conc. 1-5 1/2 2.0 Cu. Yds.
Conc. 1-8 1.1 Cu. Yds.
Reinf. Steel 65 Lbs.
12" V.S.P. 12 Lin. Ft.
Dowels Complete 4 Only
Rip Rap 2 Cu. Yds.

STA. 57 + 69



old CFN 283220403
new CFN 1832368
SLM 4.05, 15" VCP
SEE SHEET 5

CULVERT DATA
Type V.S.P. Side Road Dr. #300
Size Old C.I.P. 16" x 24 1/2". New 15" V.S.P.
Work Extend present Culv. with Std. 15" V.S.P. 8' Rt. & 8' Lt.

EST. QUANTITIES
Excav. 8 Cu. Yds.
Conc. 1-5 1/2 2.9 Cu. Yds.
Conc. 1-8 1.8 Cu. Yds.
Reinf. Steel 65 Lbs.
15" V.S.P. 16 Lin. Ft.
Remove parapets 2

STA. 67 + 60.