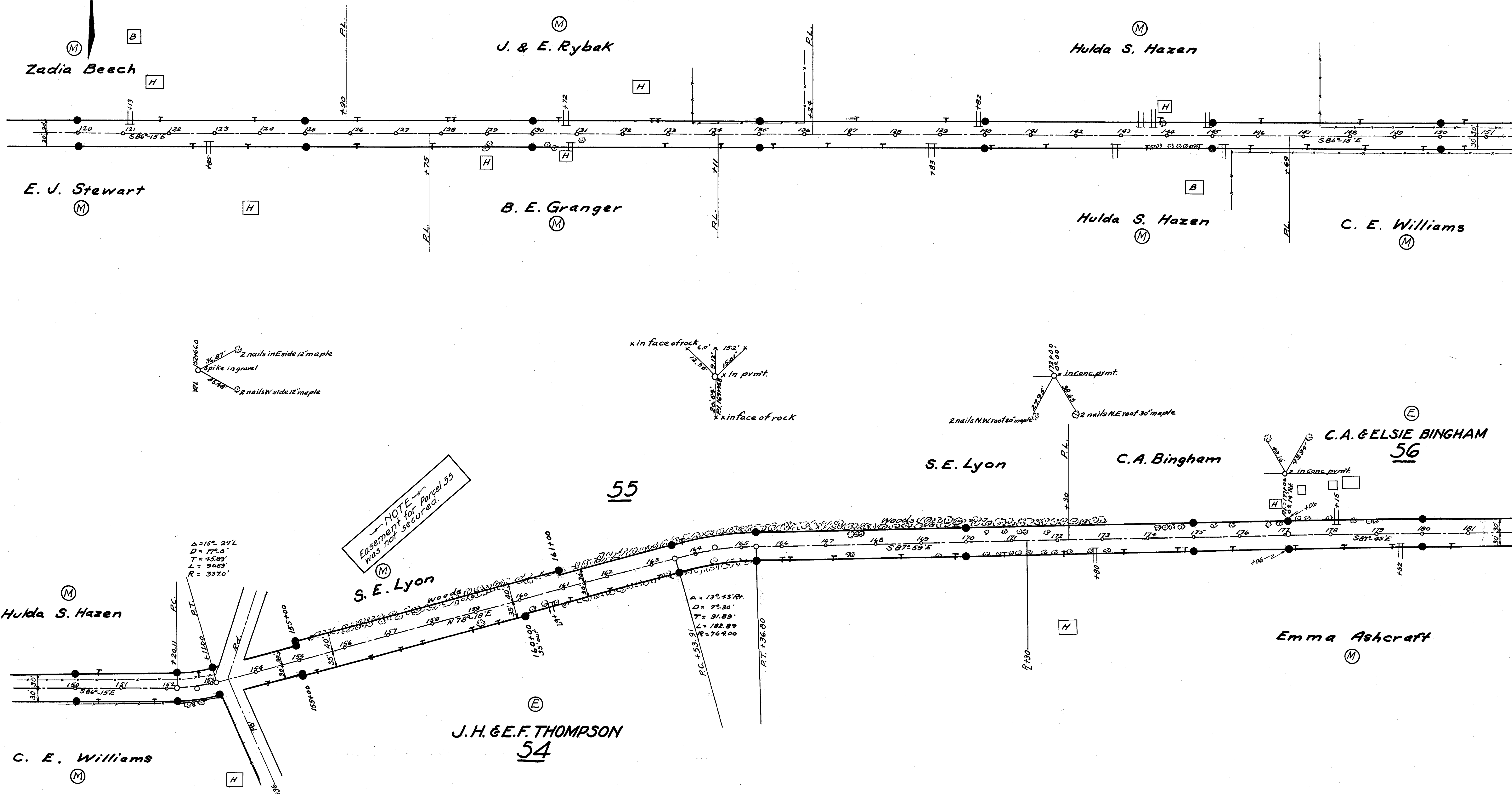


FED. AID DIST.	STATE	FED. AID PROJECT	FISCAL YEAR	3 7
10	OHIO	469 B	1928	

I.C.H. 15 H,
GEAUGA COUNTY



22°46'00"
36°31'
33°48'
2 nails in E side 12' maple
Spike in gravel
2 nails W side 12' maple

x in face of rock 6.0'
15.2'
12.39'
x in pvmt.
x in face of rock

22°35'
22°35'
22°35'
In conc. pvmt.
2 nails N.W. root 30' maple
2 nails N.E. root 30' maple

22°35'
22°35'
22°35'
In conc. pvmt.
2 nails N.W. root 30' maple
2 nails N.E. root 30' maple

NOTE
Easement for Parcel 55
was not secured.

$\Delta = 152.27'$
 $D = 172.0'$
 $T = 45.89'$
 $L = 94.69'$
 $R = 337.0'$

$\Delta = 132.43'$
 $D = 72.30'$
 $T = 31.89'$
 $L = 182.89'$
 $R = 764.00'$

J. H. & E. F. THOMPSON
54