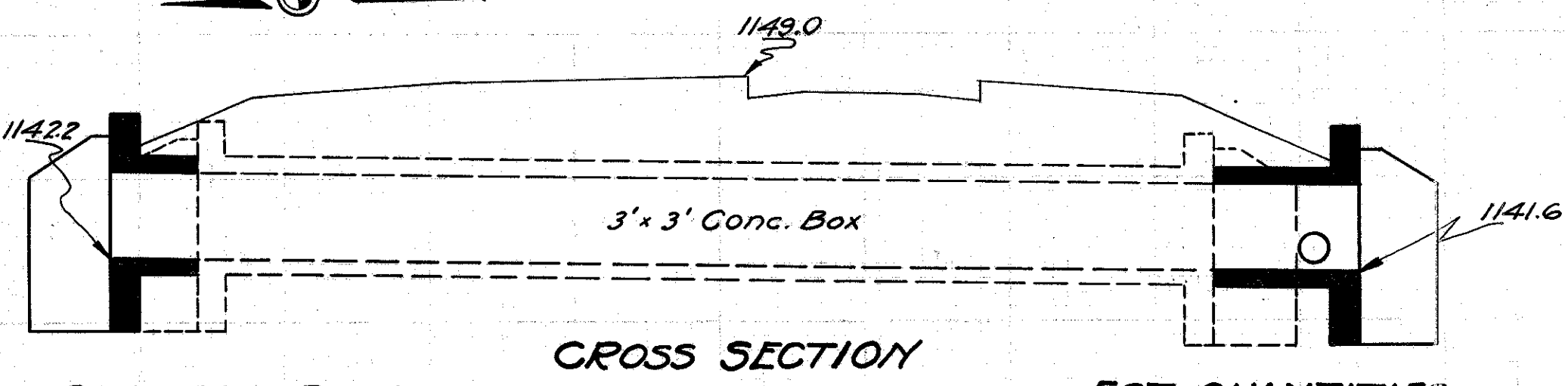
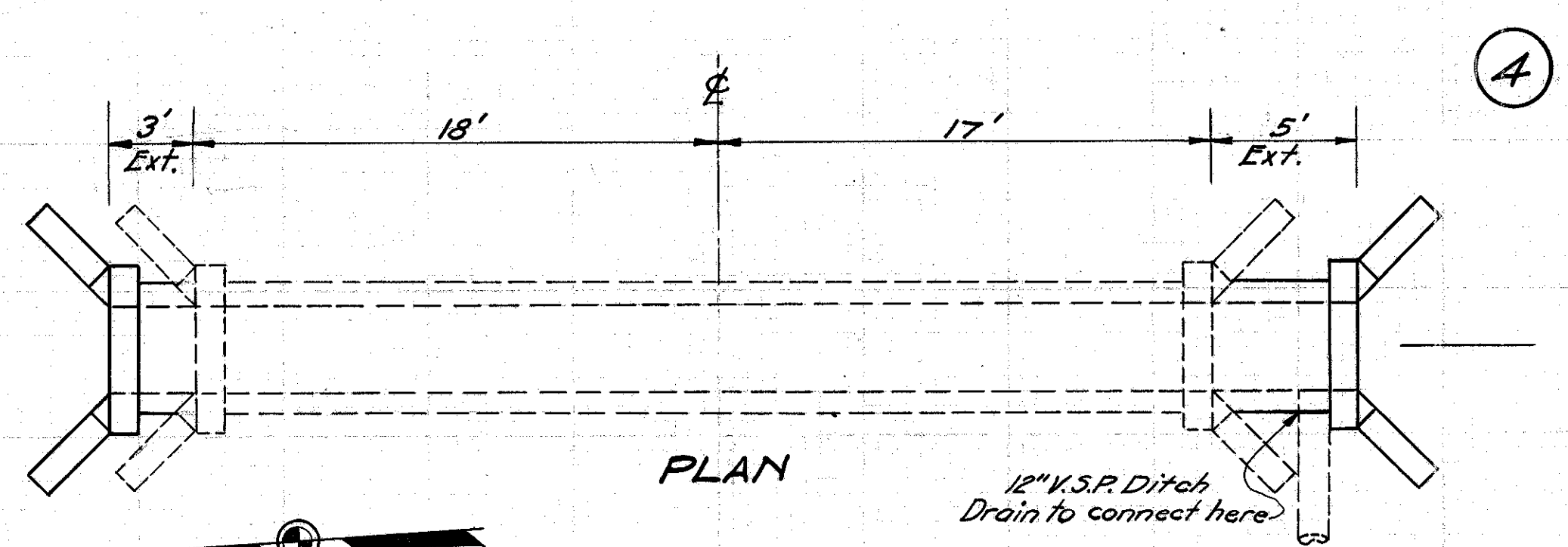


**CULVERT DATA**  
Existing 18" solid C.I.P. & V.S.P. O.K.  
Drawn by G.R.H. 4-3-29 Div. Engr. \_\_\_\_\_ Date \_\_\_\_\_

**EST. QUANTITIES**  
No work Required

STA. 402 + 83

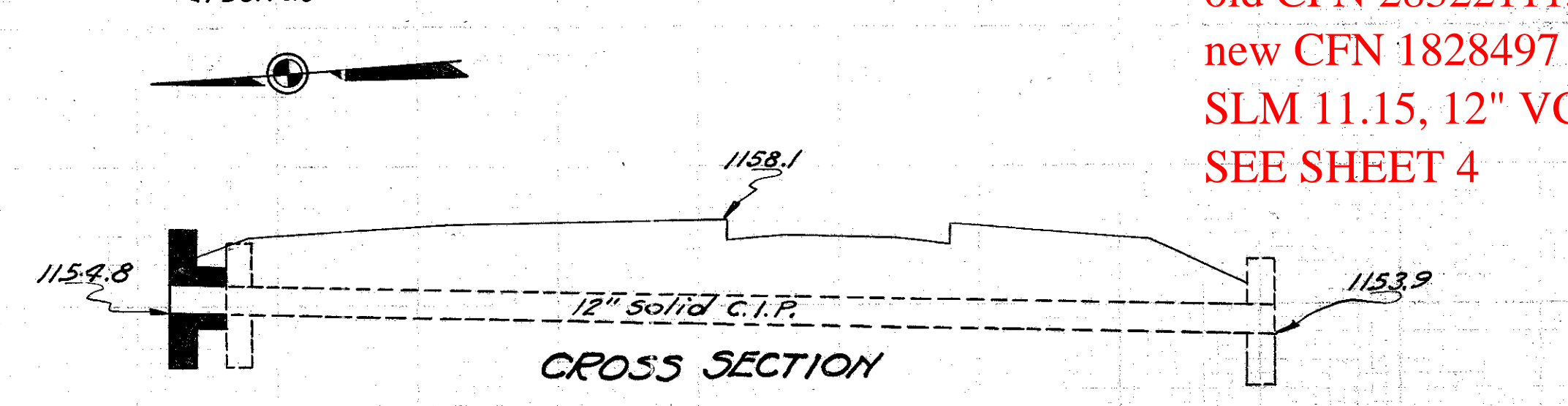
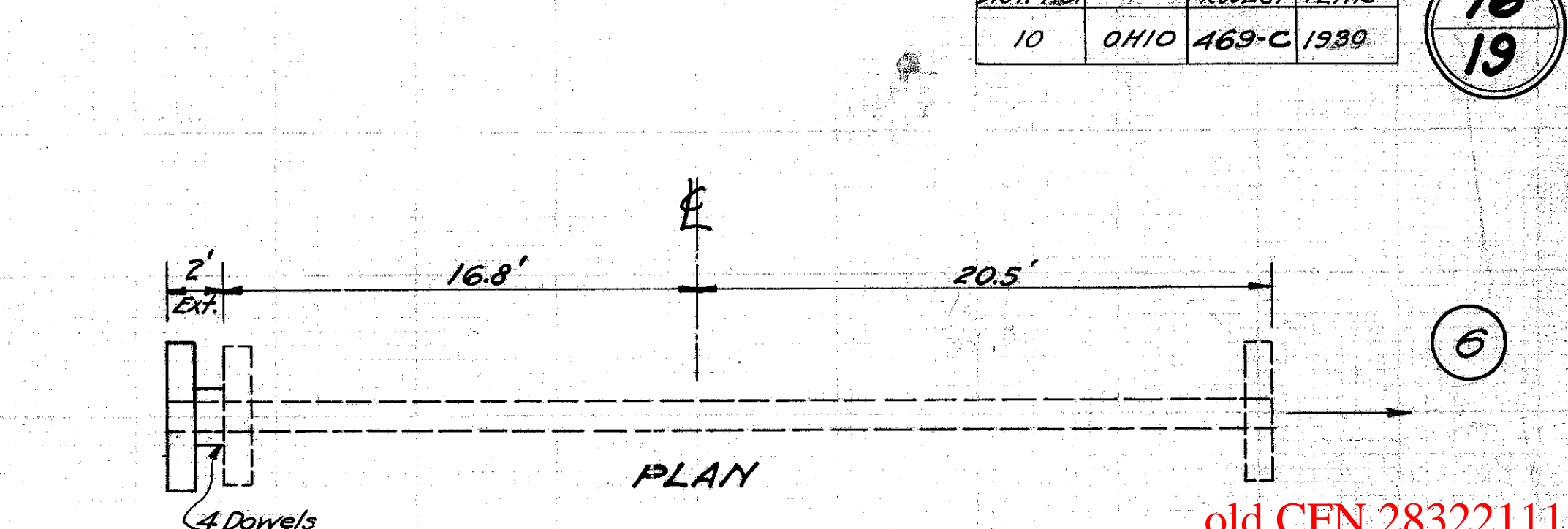


**CULVERT DATA**  
Type Std. Box Culvt. Dr. #301  
Size 3'x3'  
Work Req'd. Extend 5' Rt. & 3' Lt.

**EST. QUANTITIES**  
Excav. 18 Cu. Yds.  
Conc. 1-5/2 77 Cu. Yds.  
Reinf. Steel 212 Lbs.  
Dowels 16 Complete.

Drawn by G.R.H. 4-3-29 Div. Engr. D.W.L. \_\_\_\_\_ Date 5-21-29

STA. 437 + 85.



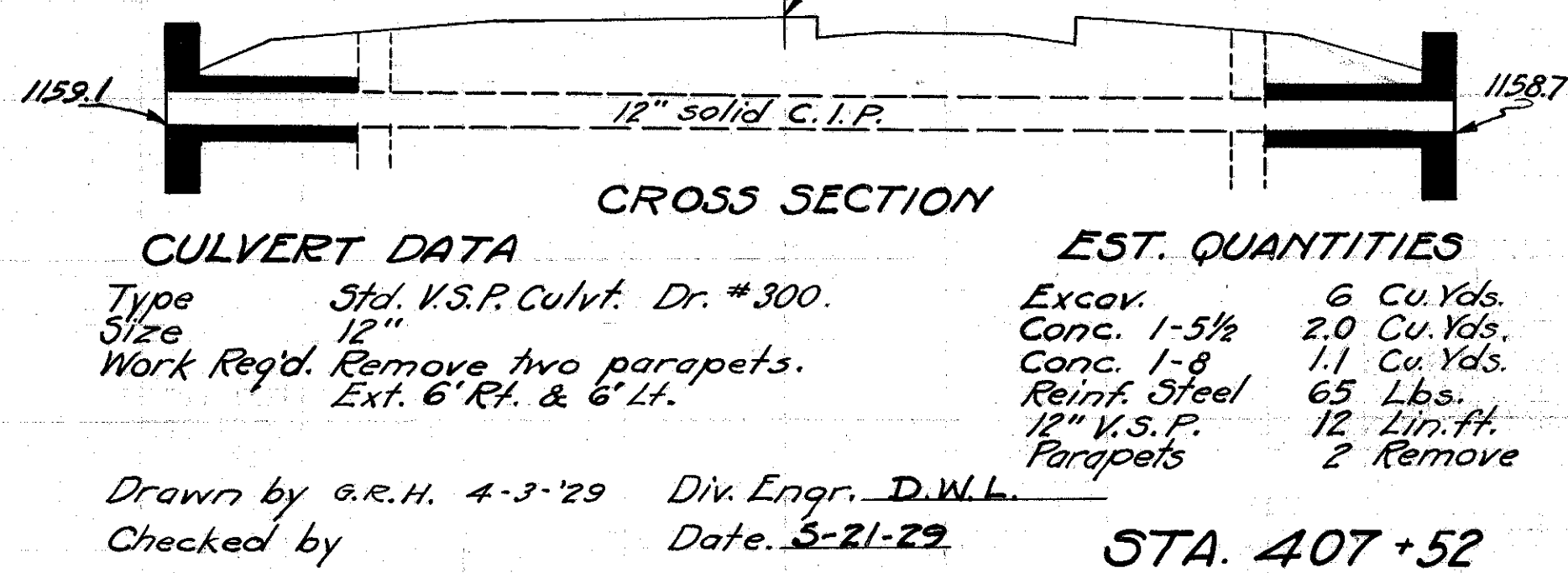
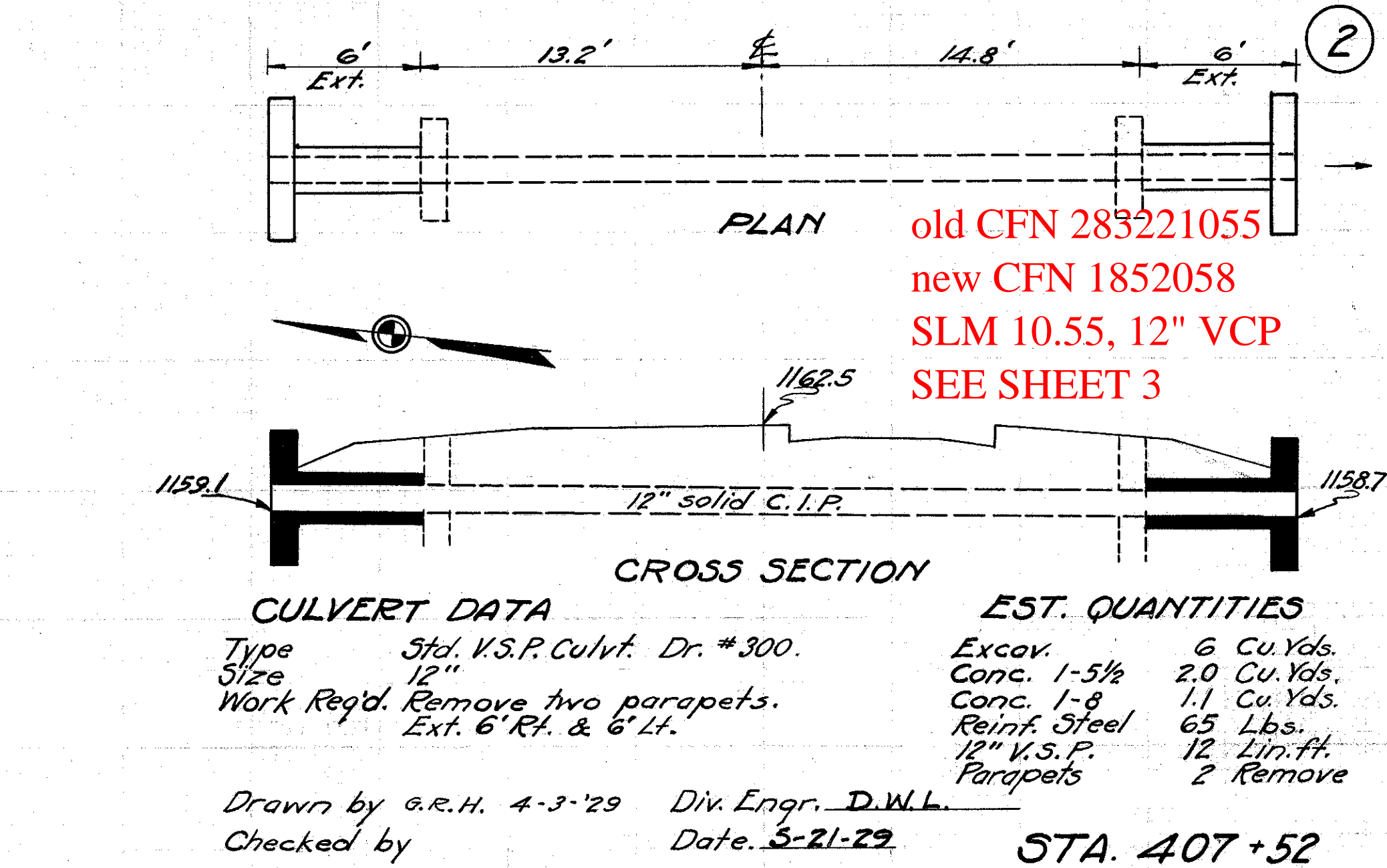
**CULVERT DATA**  
Type Std. V.S.P. Culvt. Dr. #300.  
Size 12"  
Work Req'd. Remove Lt. parapet. Extend 2' Lt. V.S.P.

**EST. QUANTITIES**  
Excav. 1 Cu. Yd.  
Conc. 1-5/2 1.0 Cu. Yd.  
Conc. 1-8 .1 Cu. Yd.  
Reinf. Steel 33 Lbs.  
12" V.S.P. 2 Lin. Ft.  
Dowels 4 Complete.  
Parapets 1 Remove

Drawn by G.R.H. 4-3-29 Div. Engr. D.W.L. \_\_\_\_\_ Date 5-21-29

STA. 443 + 92

old CFN 283221115  
new CFN 1828497  
SLM 11.15, 12" VCP  
SEE SHEET 4



**CULVERT DATA**  
Type Std. V.S.P. Culvt. Dr. #300.  
Size 12"  
Work Req'd. Remove two parapets. Ext. 6' Rt. & 6' Lt.

**EST. QUANTITIES**  
Excav. 6 Cu. Yds.  
Conc. 1-5/2 2.0 Cu. Yds.  
Conc. 1-8 1.1 Cu. Yds.  
Reinf. Steel 65 Lbs.  
12" V.S.P. 12 Lin. Ft.  
Parapets 2 Remove

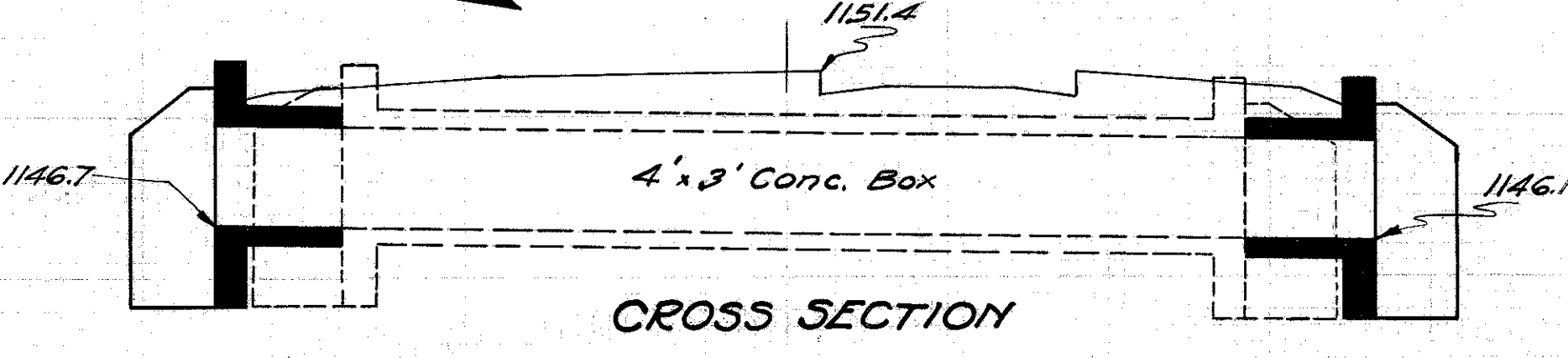
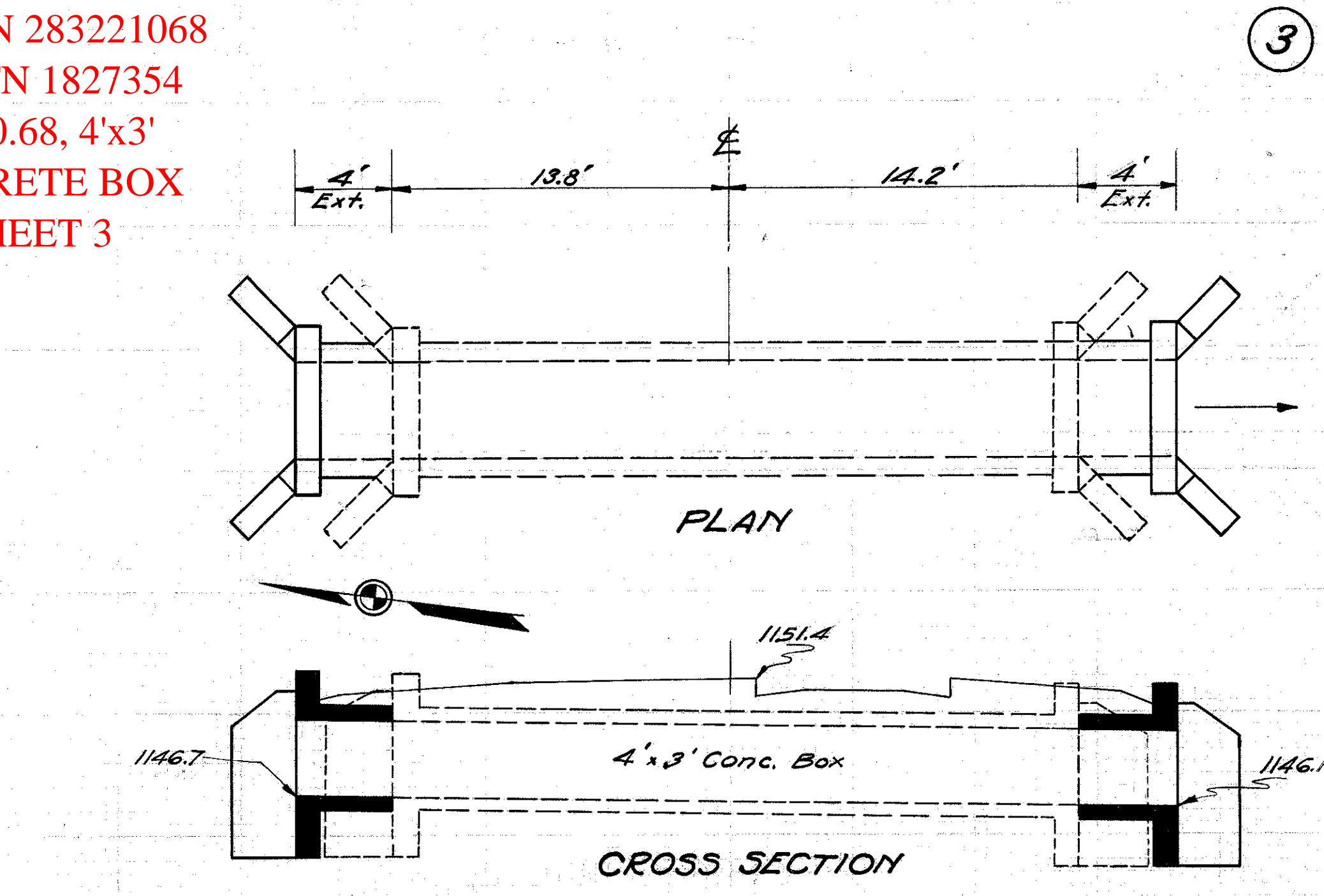
Drawn by G.R.H. 4-3-29 Div. Engr. D.W.L. \_\_\_\_\_ Date 5-21-29

STA. 407 + 52

old CFN 283221055  
new CFN 1852058  
SLM 10.55, 12" VCP  
SEE SHEET 3

old CFN 283221103  
new CFN 1821322  
SLM 11.03, 3'x3'  
CONCRETE BOX  
SEE SHEET 4

old CFN 283221068  
new CFN 1827354  
SLM 10.68, 4'x3'  
CONCRETE BOX  
SEE SHEET 3

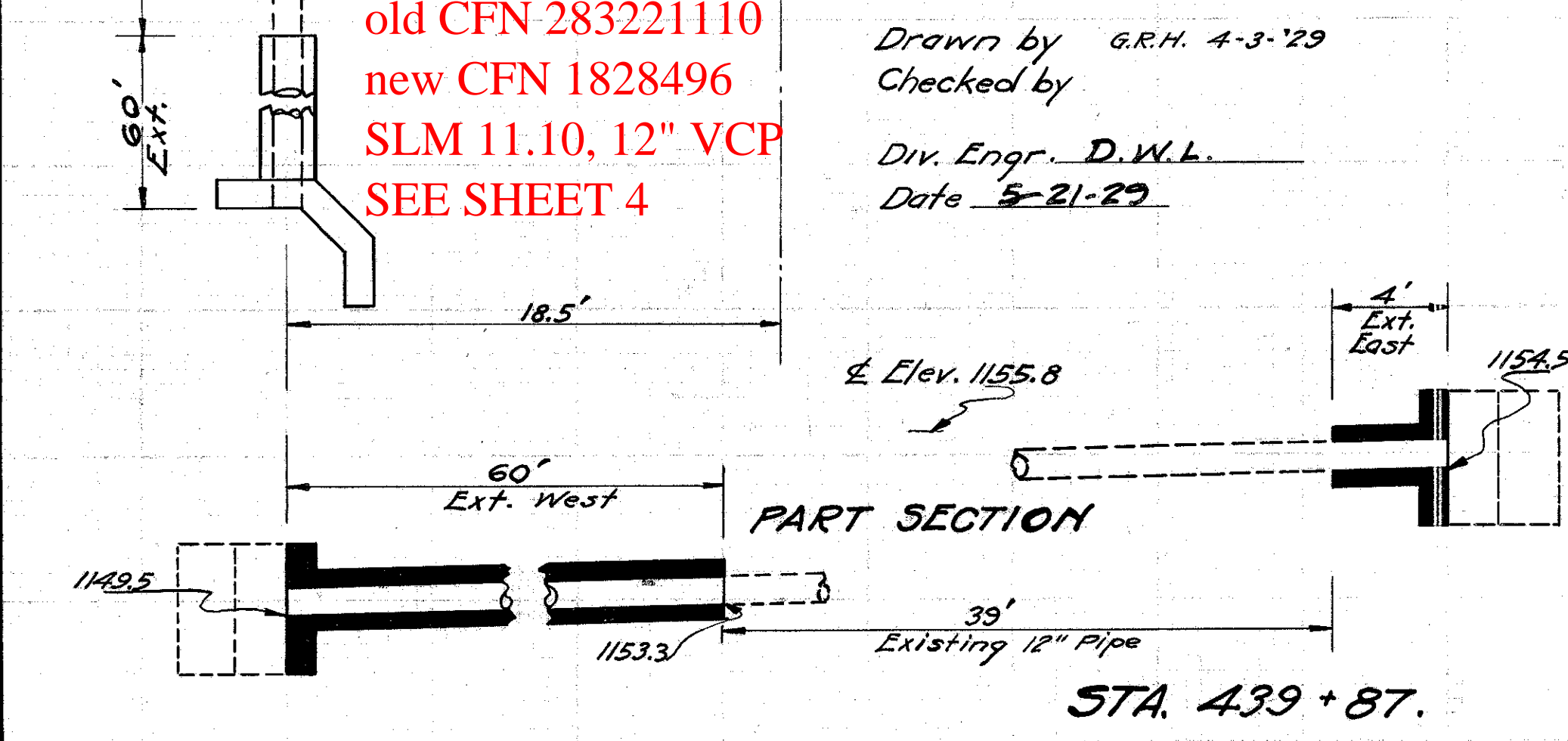
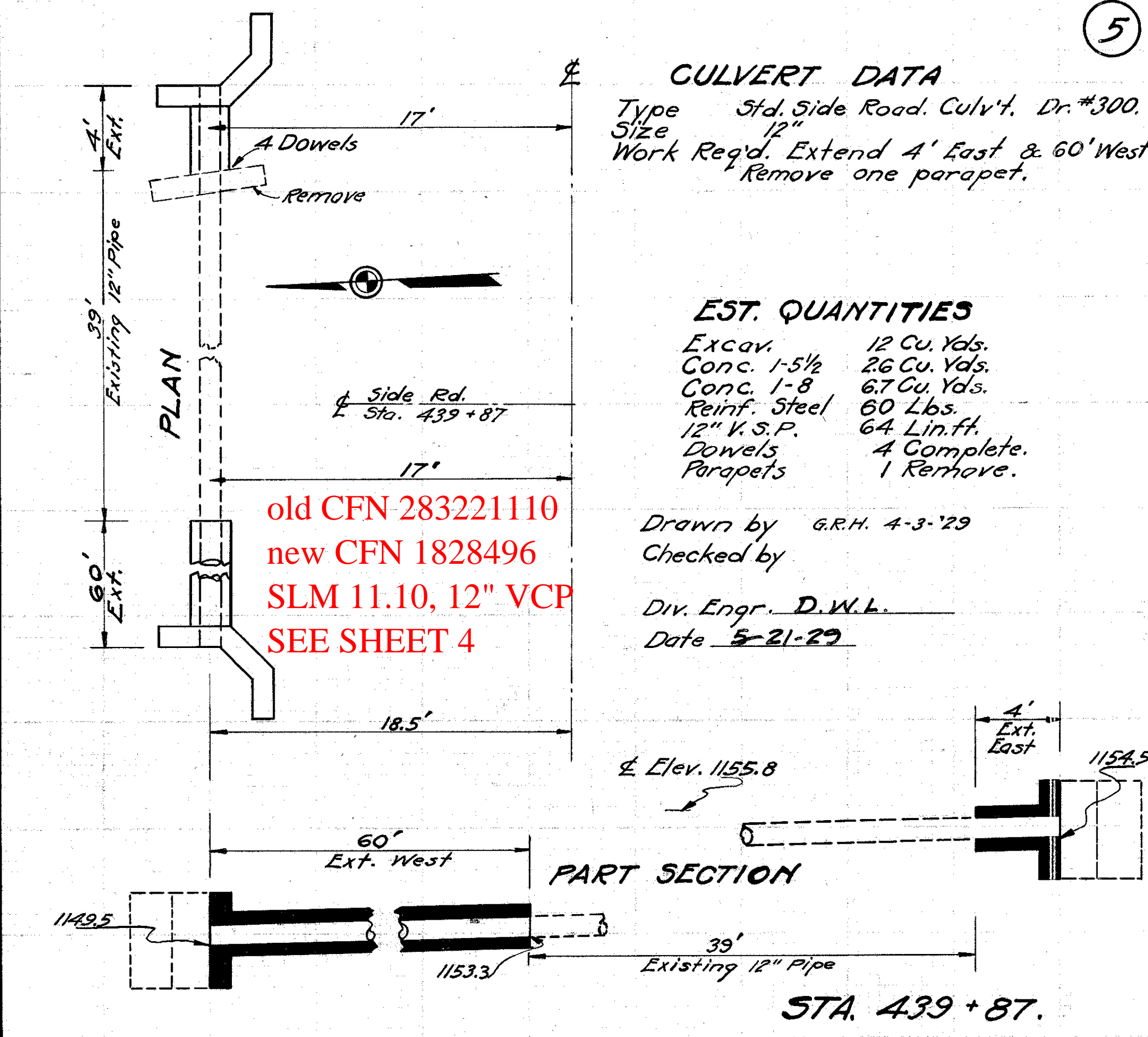


**CULVERT DATA**  
Type Std. Box Culvt. Dr. #301  
Size 4'x3'  
Work Req'd. Remove two parapets. Extend 4' Rt. & 4' Lt.

**EST. QUANTITIES**  
Excav. 10 Cu. Yds.  
Conc. 1-5/2 8.4 Cu. Yds.  
Reinf. Steel 247 Lbs.  
Dowels 20 Complete.  
Parapets 2 Remove.

Drawn by G.R.H. 4-3-29 Div. Engr. D.W.L. \_\_\_\_\_ Date 5-21-29

STA. 419 + 30



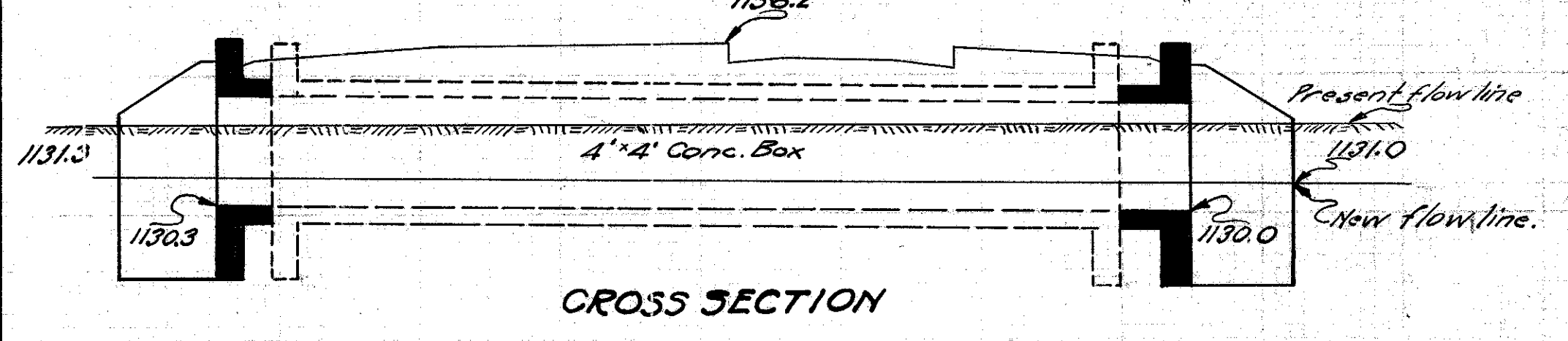
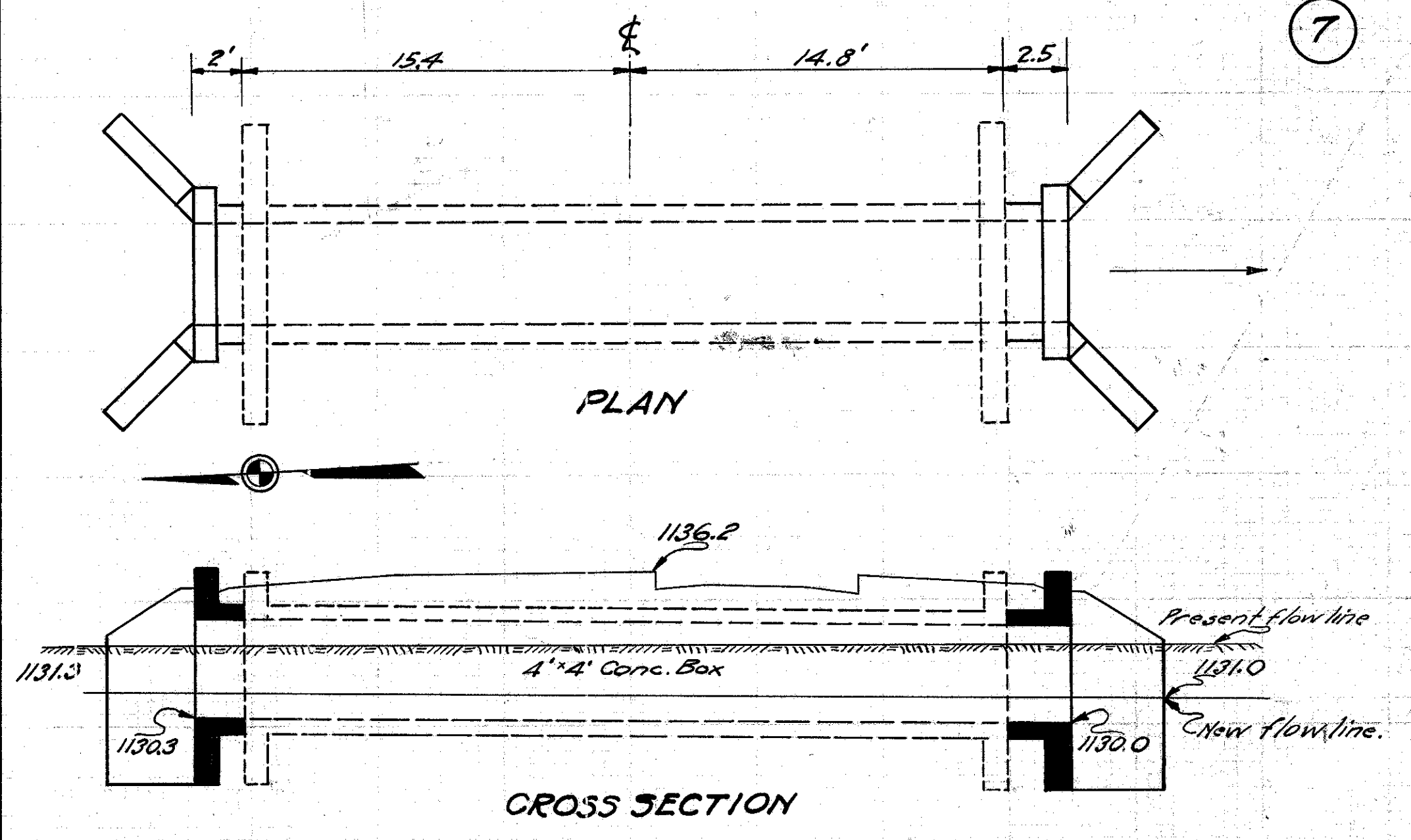
**CULVERT DATA**  
Type Std. Side Road. Culvt. Dr. #300.  
Size 4'x4'  
Work Req'd. Extend 4' East & 60' West. Remove one parapet.

**EST. QUANTITIES**  
Excav. 12 Cu. Yds.  
Conc. 1-5/2 26 Cu. Yds.  
Conc. 1-8 67 Cu. Yds.  
Reinf. Steel 60 Lbs.  
12" V.S.P. 64 Lin. Ft.  
Dowels 4 Complete.  
Parapets 1 Remove.

Drawn by G.R.H. 4-3-29  
Checked by \_\_\_\_\_  
Div. Engr. D.W.L. \_\_\_\_\_  
Date 5-21-29

STA. 439 + 87.

old CFN 283221110  
new CFN 1828496  
SLM 11.10, 12" VCP  
SEE SHEET 4



**CULVERT DATA**  
Type Std. Conc. Box Culvt. Dr. #301.  
Size 4'x4'  
Work Req'd. Remove two parapets. Extend 25' Rt. & 2' Lt. Dig outlet ditch 750' to Rt. Average depth 1'. Bottom 2' wide. Clean old culvert to flow line as shown.

**EST. QUANTITIES**  
Excav. 32 Cu. Yds.  
Conc. 1-5/2 91 Cu. Yds.  
Reinf. Steel 186 Lbs.  
Channel Excav. 60 Cu. Yds.  
Dowels 24 Complete.  
Parapets 2 Remove.

Drawn by G.R.H. 4-3-29 Div. Engr. D.W.L. \_\_\_\_\_ Date 5-21-29

STA. 459 + 83.

old CFN 283221149  
new CFN 1807824  
REPLACED IN 1954  
UNDER GEA-322-11.45