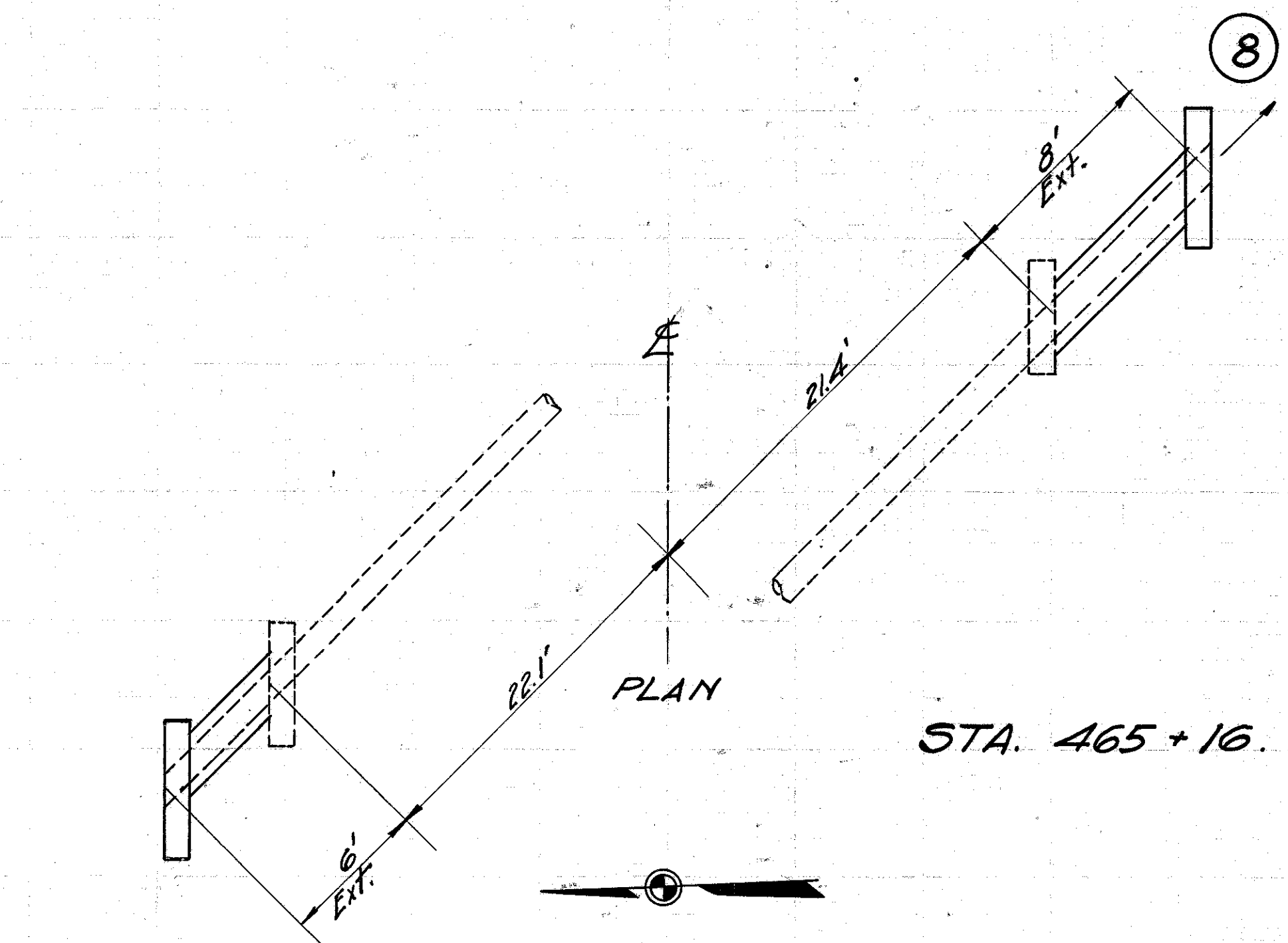


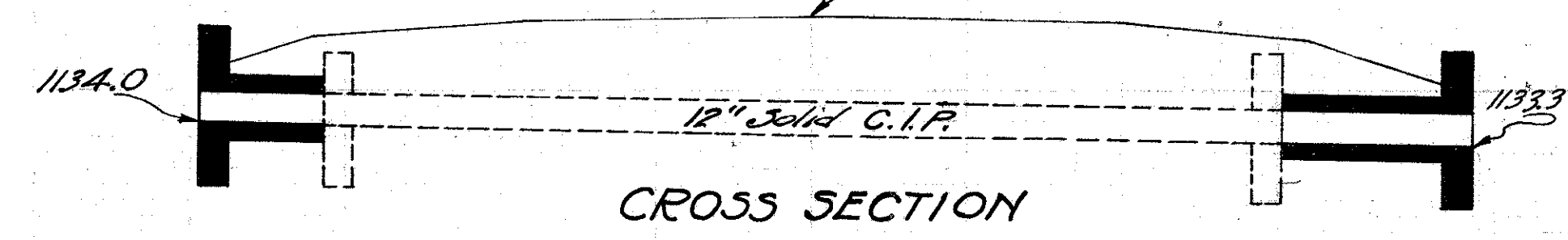
old CFN 283221214
new CFN 1821321
SLM 12.14, 15" VCP
SEE SHEET 6

5 H. (1-C.H.) 15 SEC. H₂G.
GEAUGA COUNTY.



STA. 465 + 16.

REMOVED IN 1955
RELOCATION PROJECT



CROSS SECTION

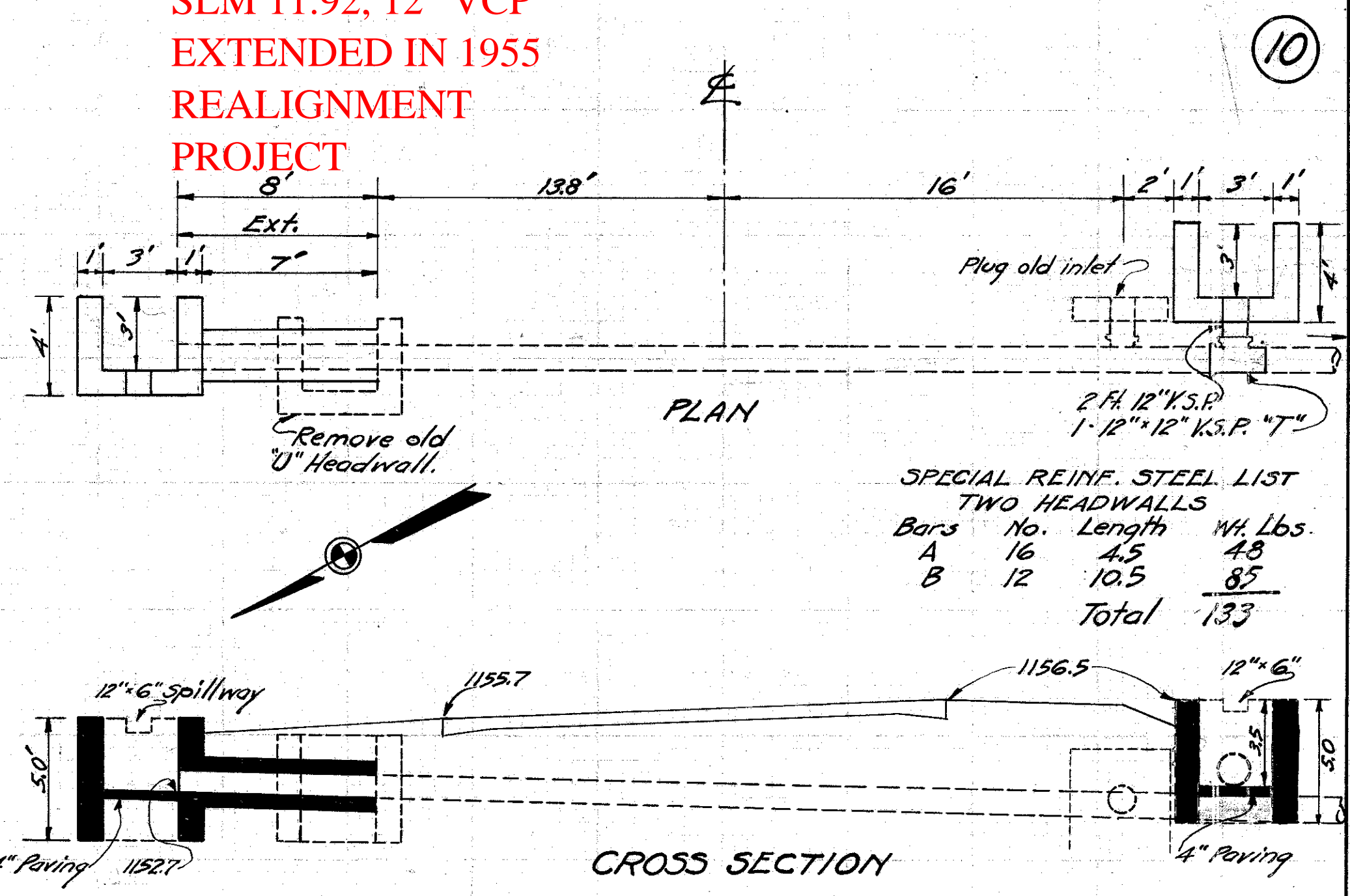
CULVERT DATA
Type Std. V.S.P. Culvt. Dr. #300.
Size 12"
Work Req'd. Extend 8' Rt. & 6' Lt.
Drawn by G.R.H. 4-8-29 Div. Engr. D.W.L.
Checked by Date 5/21/29

EST. QUANTITIES
Excav. 10 Cu. Yds.
Conc. 1-5/2 20 Cu. Yds.
Conc. 1-8 1.3 Cu. Yds.
Reinf. Steel 65 Lbs.
12" V.S.P. 14 Lin. Ft.

BRIDGE
STD. 38' x 20' CONG. GIRDER
GOOD CONDITION
NO WORK REQUIRED

STA. 467 + 10.5

old CFN 283221214
new CFN 1807825
SLM 11.92, 12" VCP
EXTENDED IN 1955
REALIGNMENT
PROJECT



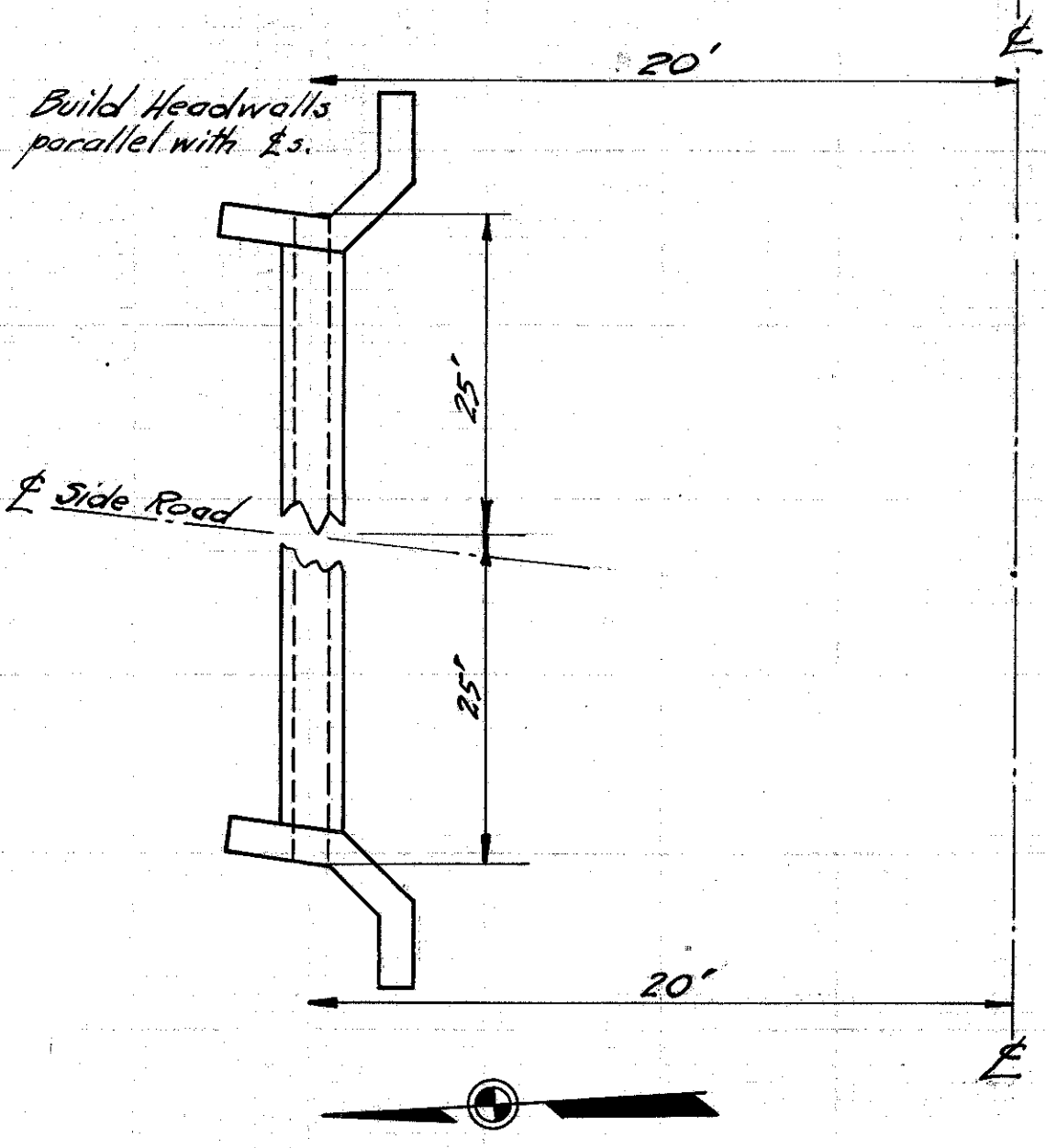
SPECIAL REINF. STEEL LIST
TWO HEADWALLS

Bars	No.	Length	Wt. Lbs.
A	16	4.5	4.8
B	12	10.5	85
Total			133

CULVERT DATA
Type Std. V.S.P. Culvt. Special Headwalls.
Size 12"
Work Req'd. Remove old U headwall Lt. Extend 8' Lt. Build Special Headwalls Rt. & Lt. Make required connections with outlet pipe on Rt.
Drawn by G.R.H. 4-8-29 Div. Engr. D.W.L.
Checked by Date 5/21/29

EST. QUANTITIES
Excav. 15 Cu. Yds.
Conc. 1-5/2 4.1 Cu. Yds.
Conc. 1-8 0.8 Cu. Yds.
Reinf. Steel 133 Lbs.
12" V.S.P. 10 Lin. Ft.
4" Paving 2 Sq. Yds.
Headwalls 1 Remove

STA. 482 + 90

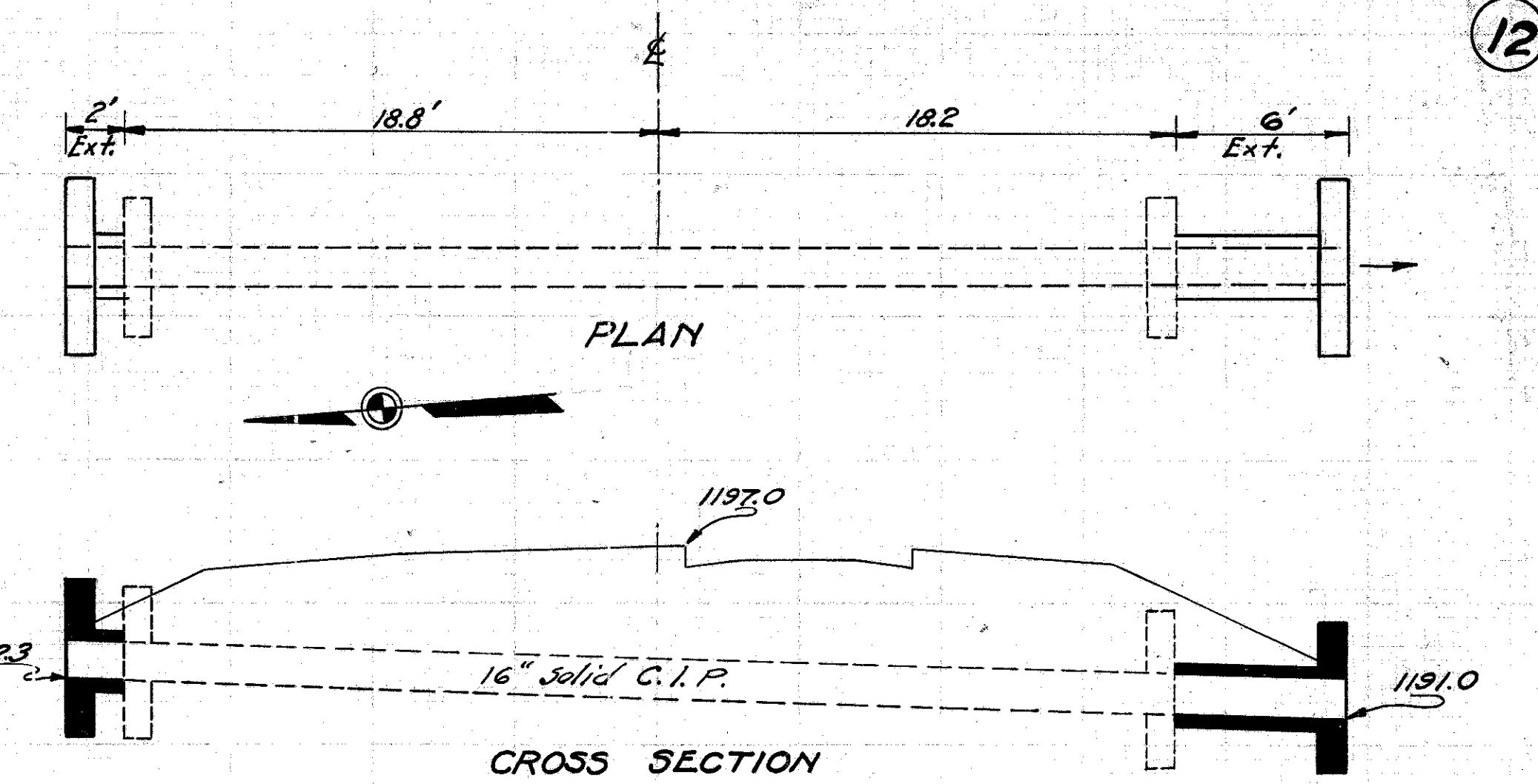


CULVERT DATA
Type Std. Side Road Culvt. Dr. #300.
Size 12" x 50"
Work Req'd. Remove old 8" x 52" pipe. Build Std. side Rd. Culvt.
Drawn by G.R.H. 4-8-29
Checked by Div. Engr. D.W.L.
Date 5/21/29

EST. QUANTITIES
Excav. 20 Cu. Yds.
Conc. 1-5/2 26 Cu. Yds.
Conc. 1-8 5.2 Cu. Yds.
Reinf. Steel 60 Lbs.
12" V.S.P. 50 Lin. Ft.
old CFN 283221200
new CFN 1827350
REPLACED IN 1954
UNDER GEA-322-11.45

CROSS SECTION

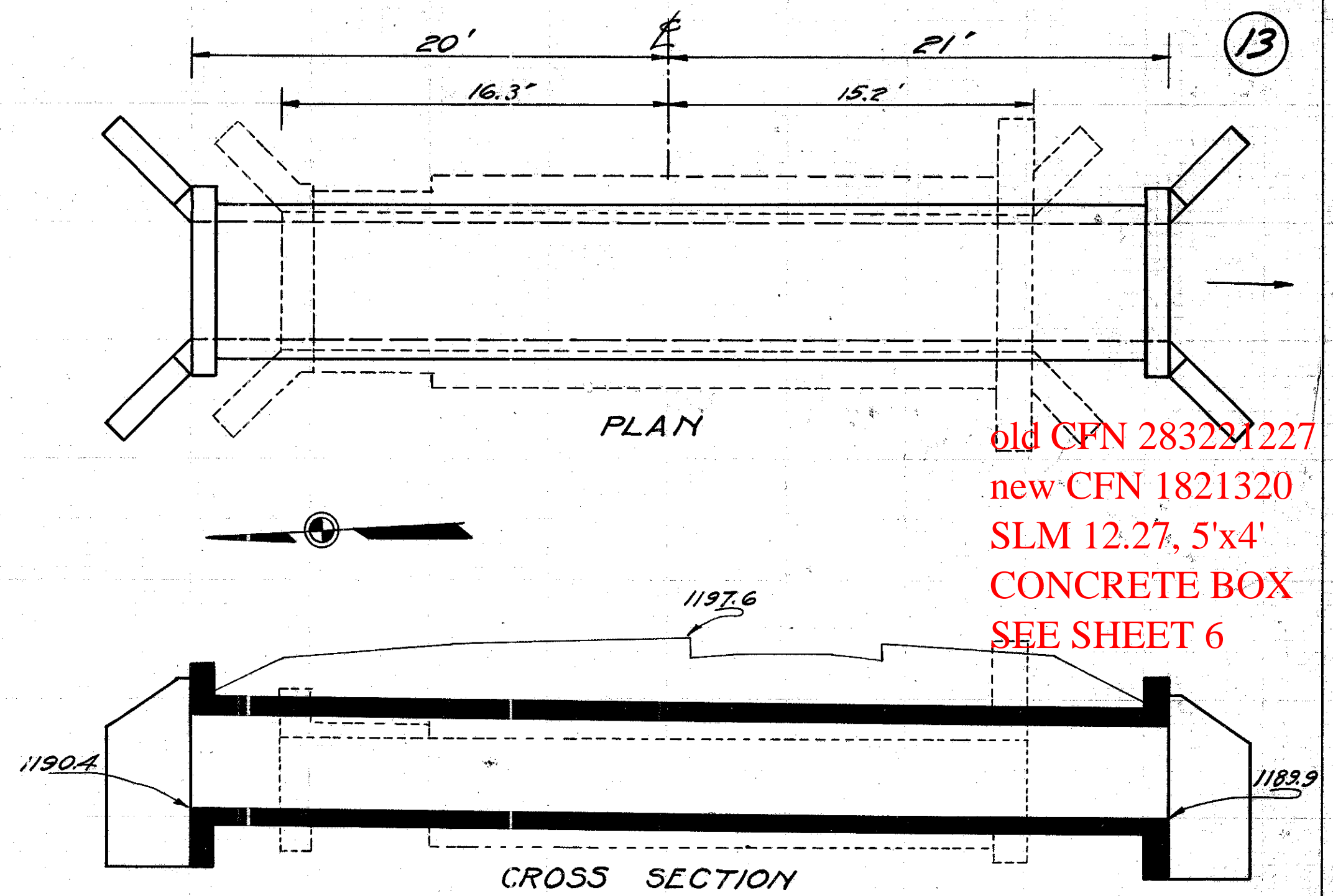
STA. 487 + 34.



CULVERT DATA
Type Std. V.S.P. culvt. Dr. #300.
Size 16"
Work Req'd. Extend 6' Rt. & 2' Lt. Remove Lt. Parapet.
Drawn by G.R.H. 4-8-29 Div. Engr. D.W.L.
Checked by Date 5/21/29

EST. QUANTITIES
Excav. 8 Cu. Yds.
Conc. 1-5/2 2.3 Cu. Yds.
Conc. 1-8 0.8 Cu. Yds.
Reinf. Steel 70 Lbs.
16" V.S.P. 8 Lin. Ft.
Dowels 8 Complete
Parapets 1 Remove

STA. 496 + 13



CULVERT DATA
Type Std. Box Culvt. Dr. #301.
Size 5' x 4' x 41"
Work Req'd. Remove old 6' x 3' x 31.5' stone & Conc. Culvt. Build new Std. 5' x 4' Conc. Box Culvt.
Drawn by G.R.H. 4-8-29 Div. Engr. D.W.L.
Checked by Date 5/21/29

EST. QUANTITIES
Excav. 75 Cu. Yds.
Conc. 1-5/2 30.2 Cu. Yds.
Reinf. Steel 137.5 Lbs.
Maintain Temp. bridge.

STA. 503 + 13

old CFN 283221227
new CFN 1821320
SLM 12.27, 5'x4'
CONCRETE BOX
SEE SHEET 6