

CULVERT DATA
 Type Std. V.S.P. Culvt. Dr. #300.
 Size 15"
 Work Req'd. Extend 4' Rt. & 6' Lt.
 Open new channel Lt.

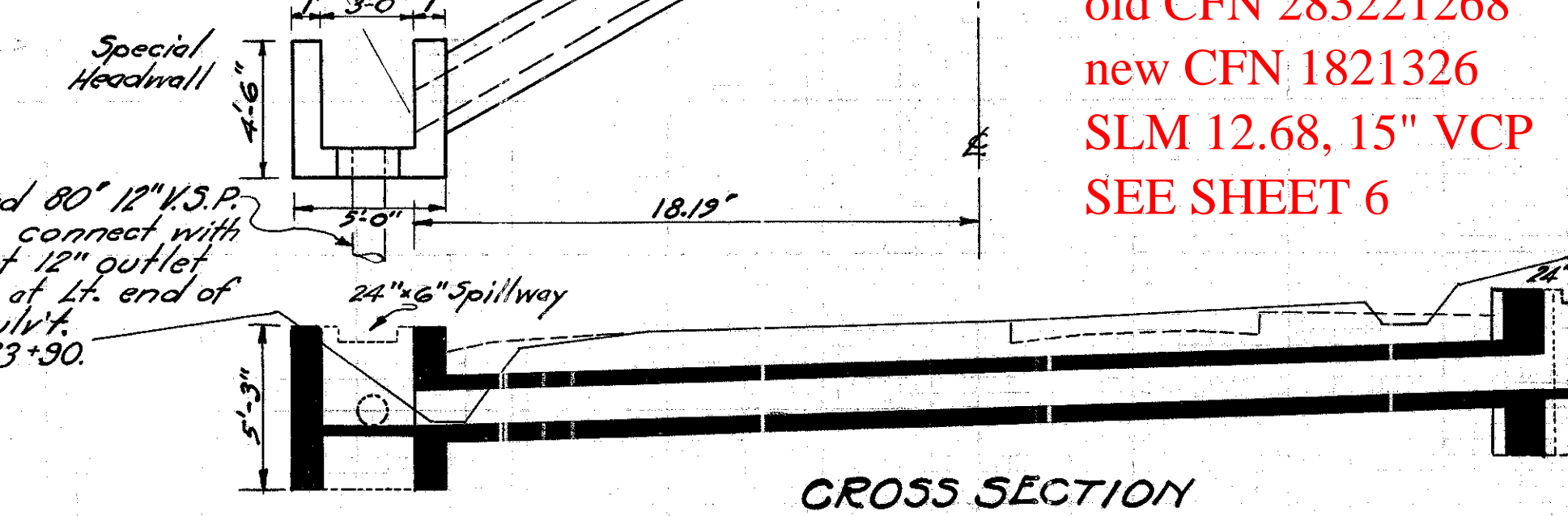
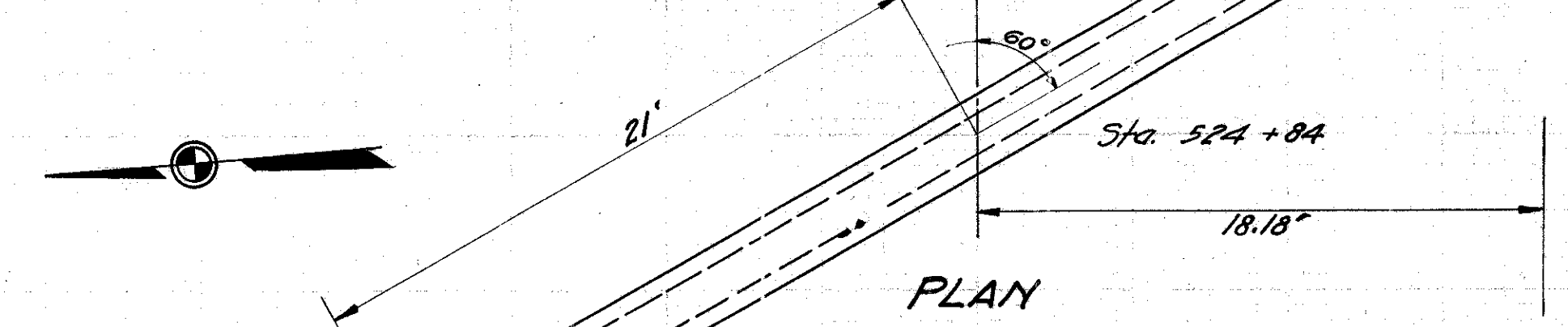
EST. QUANTITIES
 Excav. 6 Cu. Yds.
 Excav. Channel 45 Cu. Yds.
 Conc. 1-5 1/2 2.3 Cu. Yds.
 Conc. 1-8 1.0 Cu. Yds.
 Reinf. Steel 7.0 Lbs.
 15" V.S.P. 10 Lin. Ft.
 Dowels 8 Complete
 Parapets 1 Remove

Drawn by G.R.H. 4-10-'29 Div. Engr. D.W.L.
 Checked by Date 5/21/29

old CFN 283221241
 new CFN 1821319
 SLM 12.41, 15" VCP
 SEE SHEET 6

STA. 510 + 67.

CULVERT DATA.
 Type Std. V.S.P. Culvt. Dr. #300. Special Headwalls
 Size 15" x 42"
 Work Req'd. Abandon old 12" C.I.P. Culvt. at Sta. 523+90.
 Remove Rt. Headwall & Lt. parapet.
 Build new Millside 15" x 42" V.S.P. Culvt. with special Headwalls at Sta. 524+84.



5-H. (1:CH) 15 SEC. H₂G.
 GEauga COUNTY.

STEEL LIST FOR SPECIAL HEADWALLS

Bar	No.	Length	Wt. Lbs.
A 1/2"	20	5'-0"	67
B 1/2"	10	12'-0"	80
Total			147

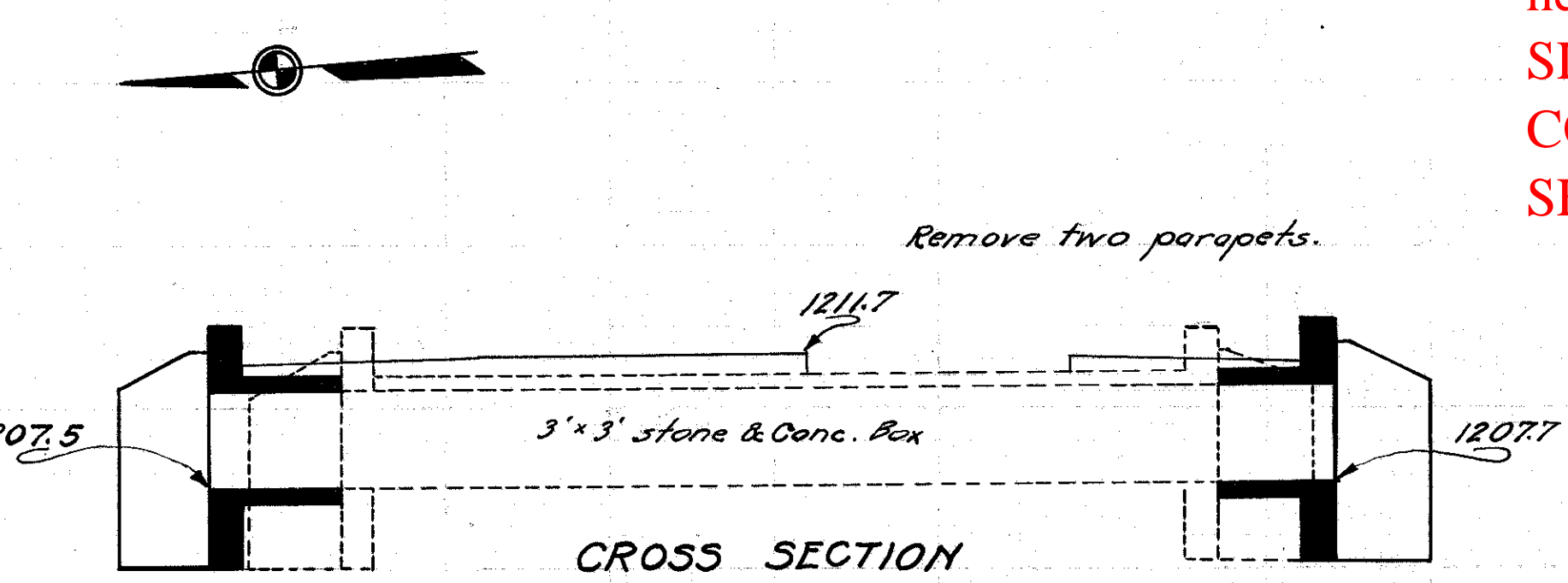
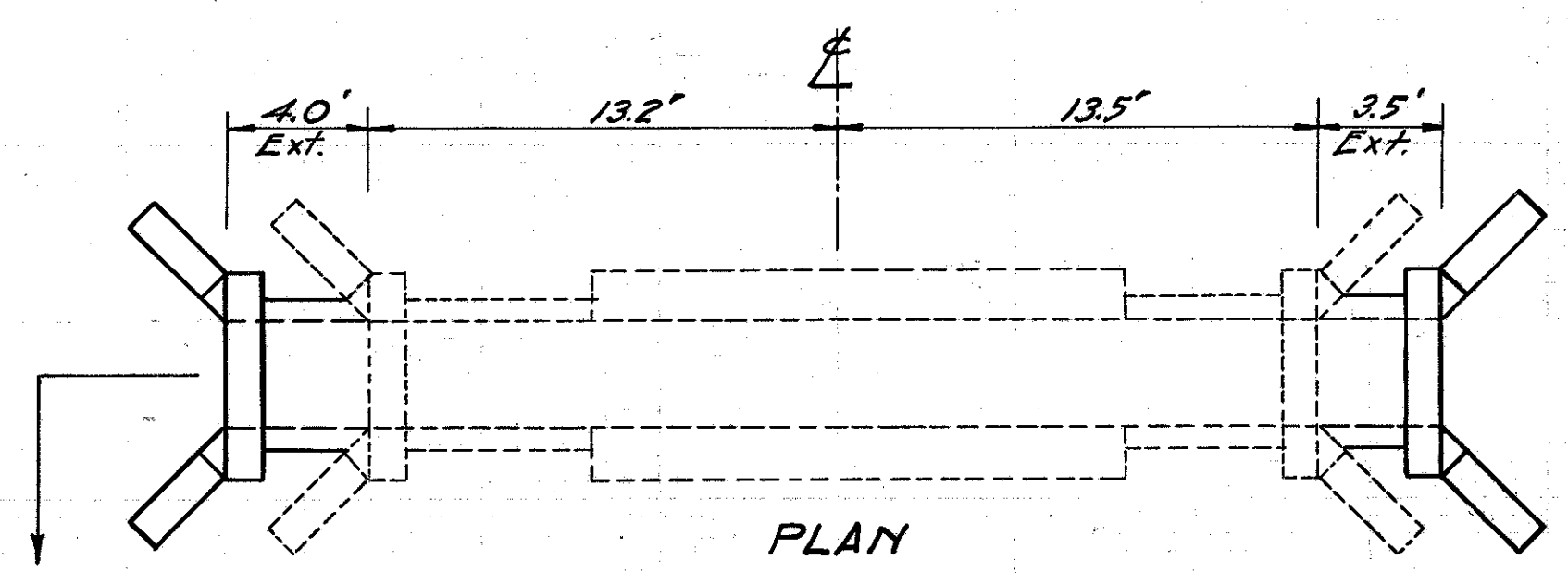
EST. QUANTITIES

Excav.	35 Cu. Yds.
Conc. 1-5 1/2	4.7 Cu. Yds.
Conc. 1-8	5.2 Cu. Yds.
Reinf. Steel	14.7 Lbs.
15" V.S.P. (Culvt.)	42 Lin. Ft.
12" V.S.P. (Outlet)	80 Lin. Ft.
Paving 4" Conc.	2.5 Sq. Yds.
Headwall	1 Remove
Parapet	1 Remove

old CFN 283221268
 new CFN 1821326
 SLM 12.68, 15" VCP
 SEE SHEET 6

Drawn by G.R.H. 4-10-'29 Div. Engr. D.W.L.
 Checked by Date 5/21/29

STA. 524 + 84



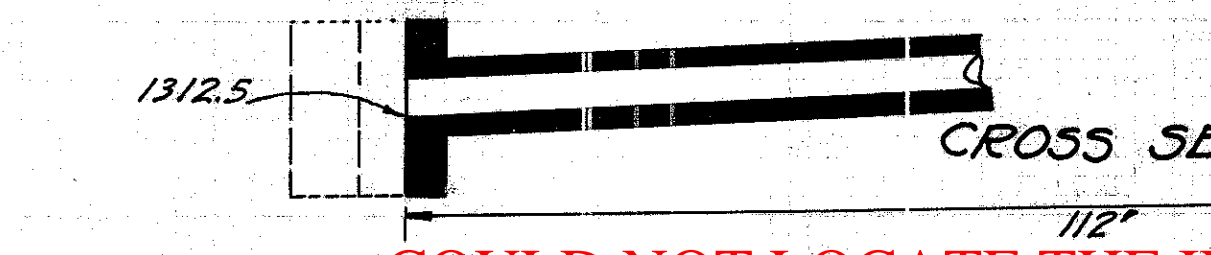
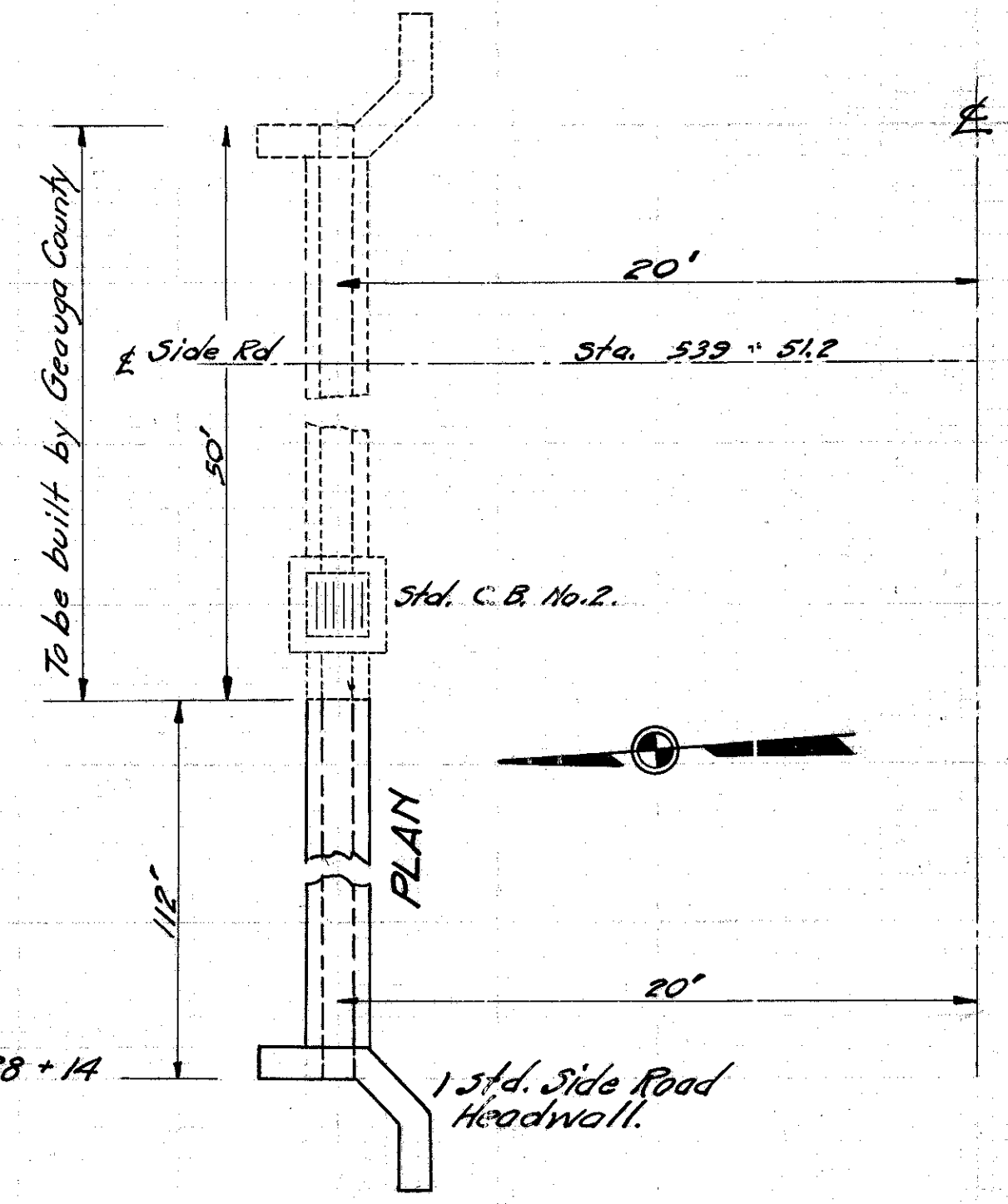
CULVERT DATA.
 Type Std. Box Culvt. Dr. #301
 Size 3' x 3'
 Work Req'd. Extend 3.5' Rt. & 4' Lt.

EST. QUANTITIES
 Excav. 12 Cu. Yds.
 Conc. 1-5 1/2 7.5 Cu. Yds.
 Reinf. Steel 20.2 Lbs.
 Dowels 16 Complete
 Parapets 2 Remove

Drawn by G.R.H. 4-10-'29 Div. Engr. D.W.L.
 Checked by Date 5/21/29

STA. 513 + 43.

old CFN 283221247
 new CFN 1821323
 SLM 12.47, 3'x3'
 CONCRETE BOX
 SEE SHEET 6



CULVERT DATA.
 Type Std. V.S.P. Side Rd. Culvt. Dr. #300.
 Size 12" x 112"
 Work Req'd. Extend portion of side Rd. Culvt. Lt. built by County, 112' to west.
 Build side Rd. headwall at west end.

EST. QUANTITIES

Excav.	35 Cu. Yds.
Conc. 1-5 1/2	1.3 Cu. Yds.
Conc. 1-8	12.0 Cu. Yds.
Reinf. Steel	30 Lbs.
12" V.S.P.	112 Lin. Ft.

Drawn by G.R.H. 4-10-'29 Div. Engr. D.W.L.
 Checked by Date 5/21/29

old CFN 283221296
 new CFN 1854793
 SLM 13.00, 12" VCP
 SEE SHEET 18

COULD NOT LOCATE THE INLET OF THE CULVERT.
 CB ON NW CORNER IS EITHER BURIED OR REMOVED.
 OUTLET IS A CB ABOUT 100 FEET FROM INTERSECTION.

STA. 539 + 51.2