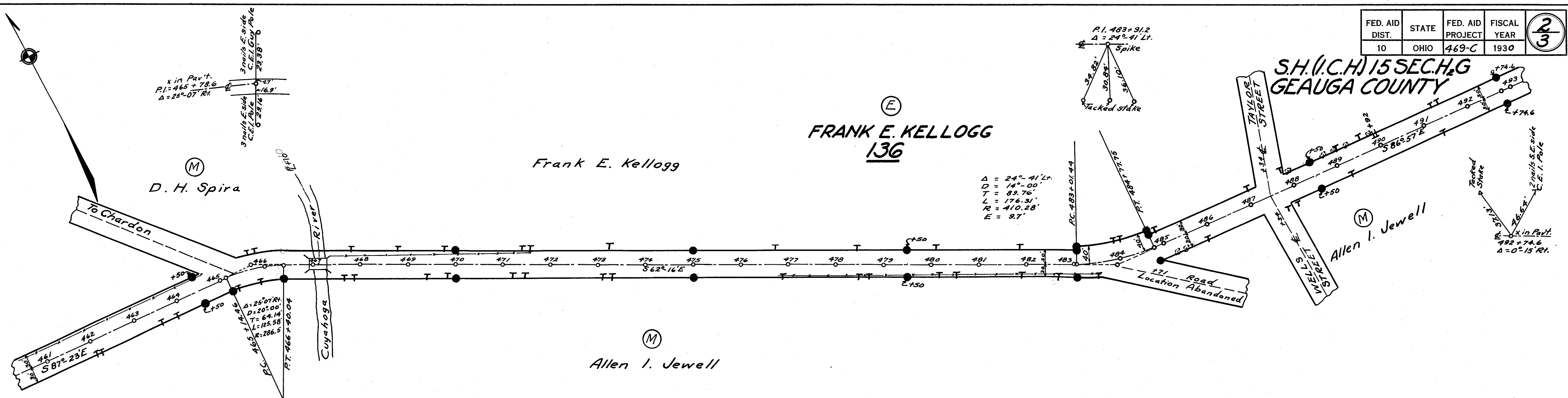
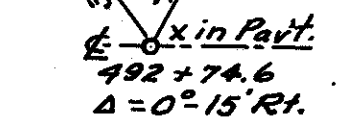
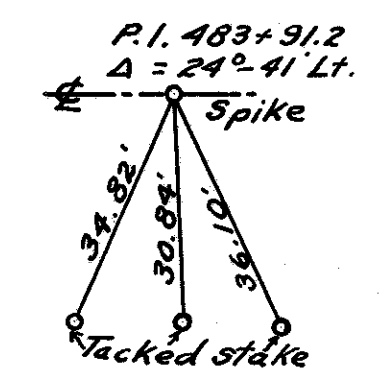


FED. AID DIST.	STATE	FED. AID PROJECT	FISCAL YEAR	<div style="border: 1px solid black; border-radius: 50%; width: 20px; height: 20px; display: flex; align-items: center; justify-content: center;"> 2 3 </div>
10	OHIO	469-C	1930	

S.H.(I.C.H) 15 SECH₂G
 GEauga COUNTY

(E)
 FRANK E. KELLOGG
 136

$\Delta = 24^{\circ} 41' Lt.$
 $D = 14^{\circ} 00'$
 $T = 89.76'$
 $L = 176.31'$
 $R = 410.28'$
 $E = 97'$



(E)
 FRANK E. KELLOGG
 136

