

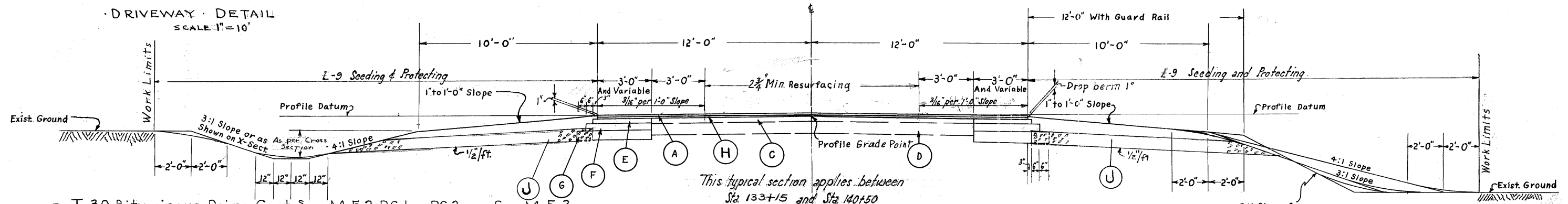
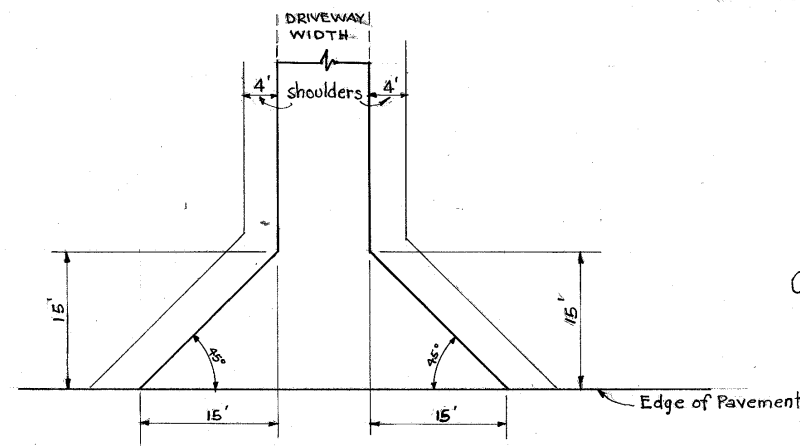
TYPICAL SECTION

TYPE-T-35

SCALE $\frac{3}{8}'' = 1'-0''$

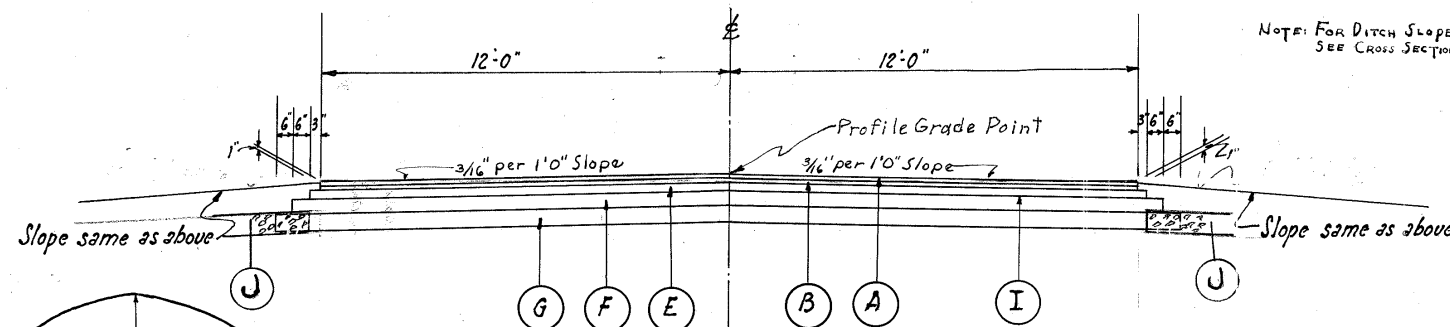
DESIGN SPEED 70 M.P.H.

CODE TYPE 6201

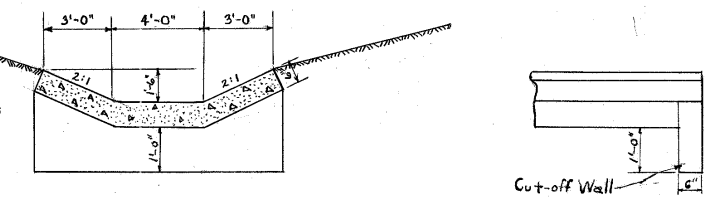


This typical section applies between
Sta. 133+15 and Sta. 140+50
Sta. 147+50 and Sta. 185+50
Sta. 203+00 and Sta. 206+50

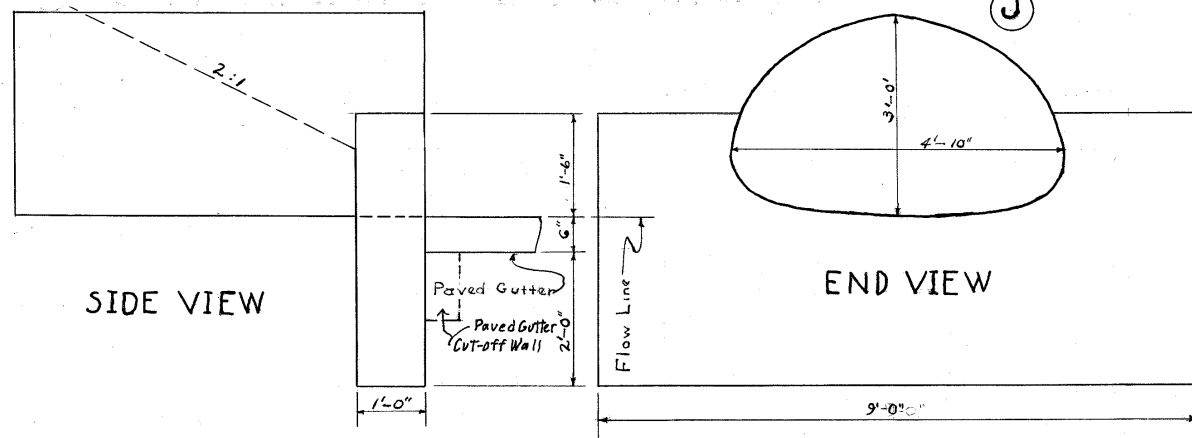
- (I) T-30 Bituminous Prime Coat, Sec. M-5.2 RC-1 or RC-2, or Sec. M-5.3 MC-0 or MC-1 applied @ 0.35 gal. per sq. yd.
- (J) I-9 Stone Underdrains No. 2.
- (A) T-35, $\frac{1}{2}''$ Asphaltic Concrete Surface Course (10-85) Type "A"
- (B) B-35, $\frac{1}{4}''$ Asphaltic Concrete Leveling Course (10-85)
- (C) 3" Bituminous Wearing Course (Exist)
- (D) 8" Water Bound Base Course (Exist)
- (E) B-35, $\frac{3}{4}''$ Asphaltic Concrete Base Course (70-85)
- (F) B-119, 6" Crushed Aggregate Base Course
- (G) I-22, 5" Subbase
- (H) B-35, $\frac{1}{4}''$ Minimum Thickness Asphaltic Concrete Leveling Course (70-85)



NOTE: FOR DITCH SLOPES SEE CROSS SECTIONS



DETAIL FOR SPECIAL PAVED GUTTER

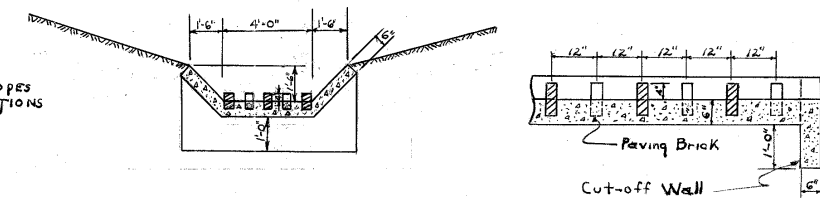


DETAIL FOR PIPE CULVERT END WALLS AT CORRUGATED PIPE ARCH

DRIVEWAYS STA. 175+18 AND STA. 180+60

This typical section applies between
Sta. 140+50 and Sta. 147+50
Sta. 185+50 and Sta. 203+00

NOTE: FOR DITCH SLOPES SEE CROSS SECTIONS



DETAIL FOR SPECIAL PAVED GUTTER MODIFIED