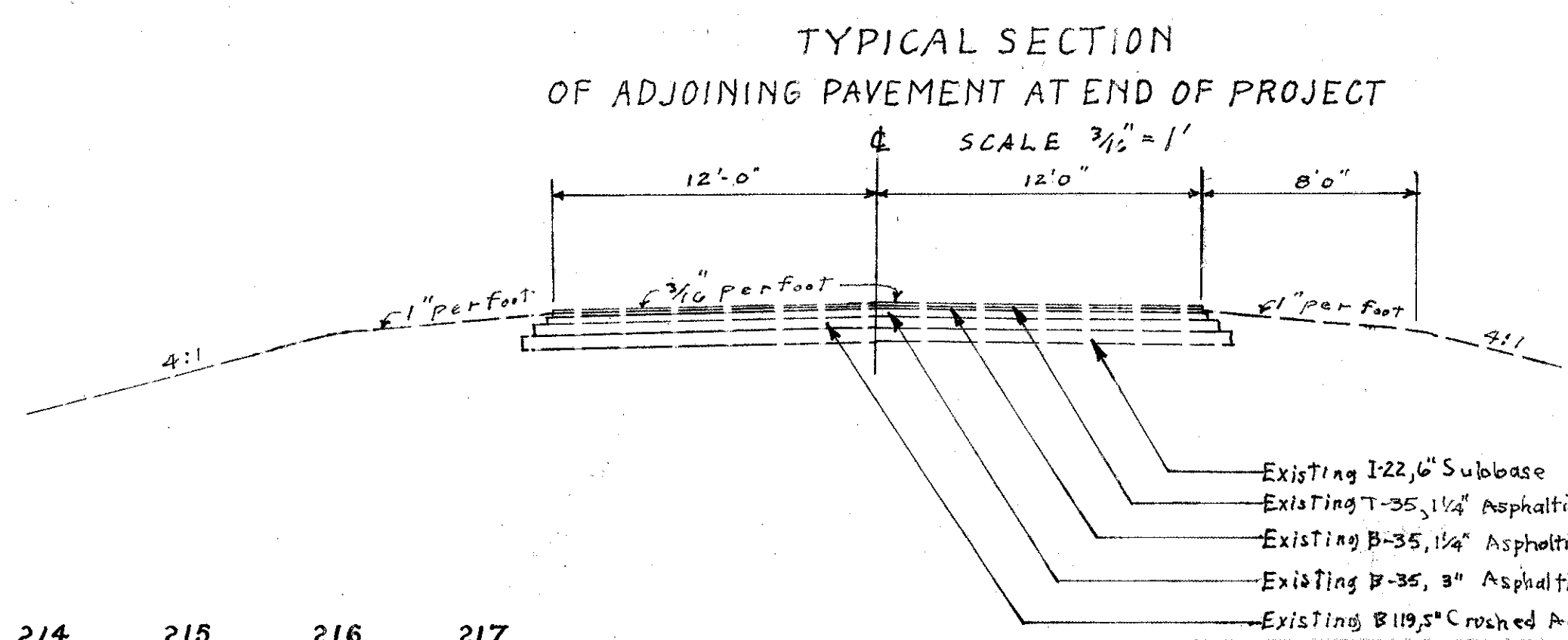
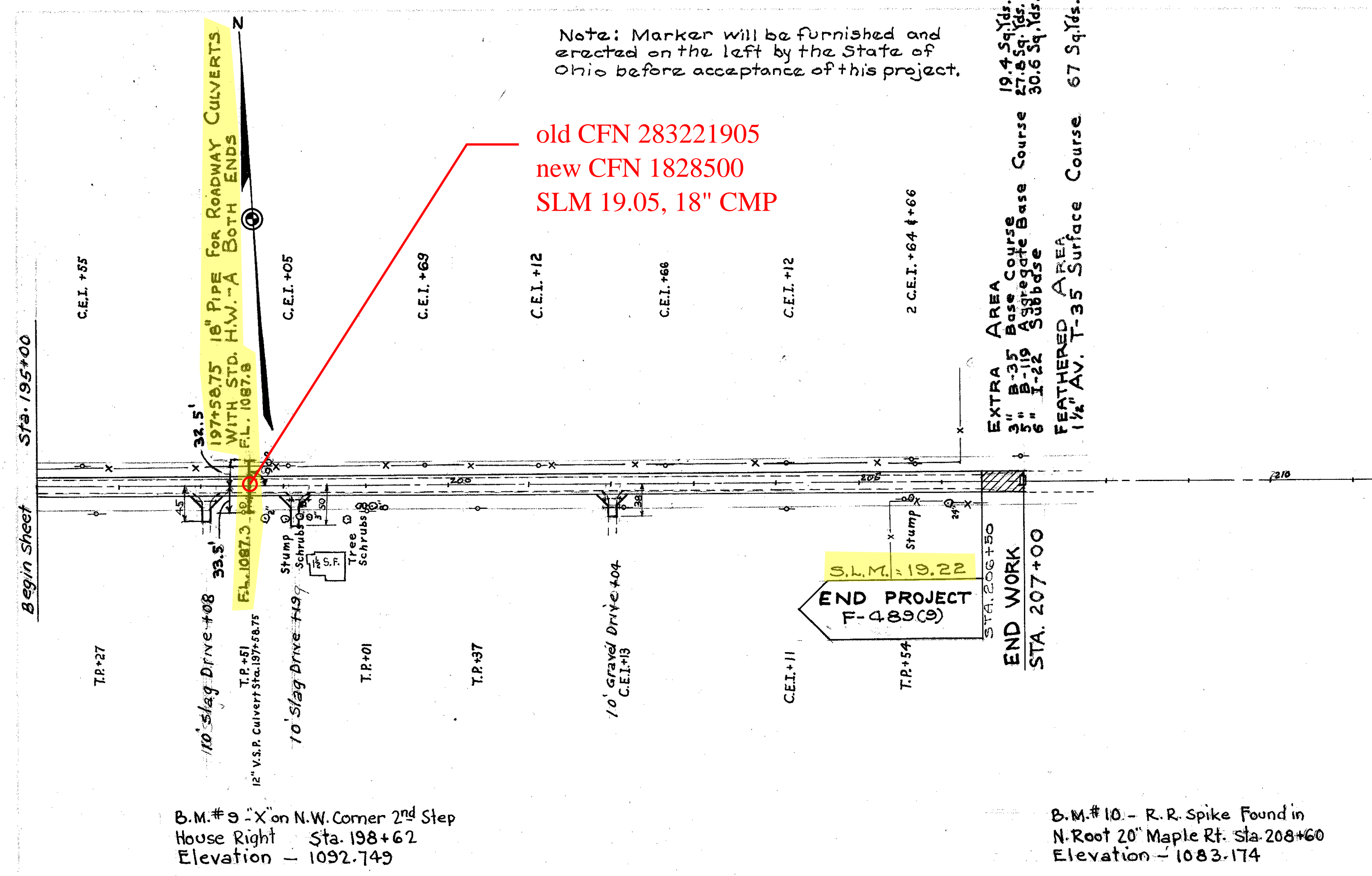


Note: Marker will be furnished and erected on the left by the State of Ohio before acceptance of this project.

old CFN 283221905  
new CFN 1828500  
SLM 19.05, 18" CMP

EXTRA AREA  
3" B-35 Base Course 19.4 Sq. Yds.  
5" B-119 Aggregate Base Course 27.8 Sq. Yds.  
6" I-22 Subbase 30.6 Sq. Yds.  
FEATHERED AREA  
1 1/2" Av. T-35 Surface Course 67 Sq. Yds.



- Existing 122/6 Subbase
- Existing 7-35, 1 1/4" Asphaltic Concrete Surface Course
- Existing B-35, 1 1/4" Asphaltic Concrete Leveling Course
- Existing B-35, 3" Asphaltic Concrete Base Course
- Existing B-119, 5" Crushed Aggregate Base Course

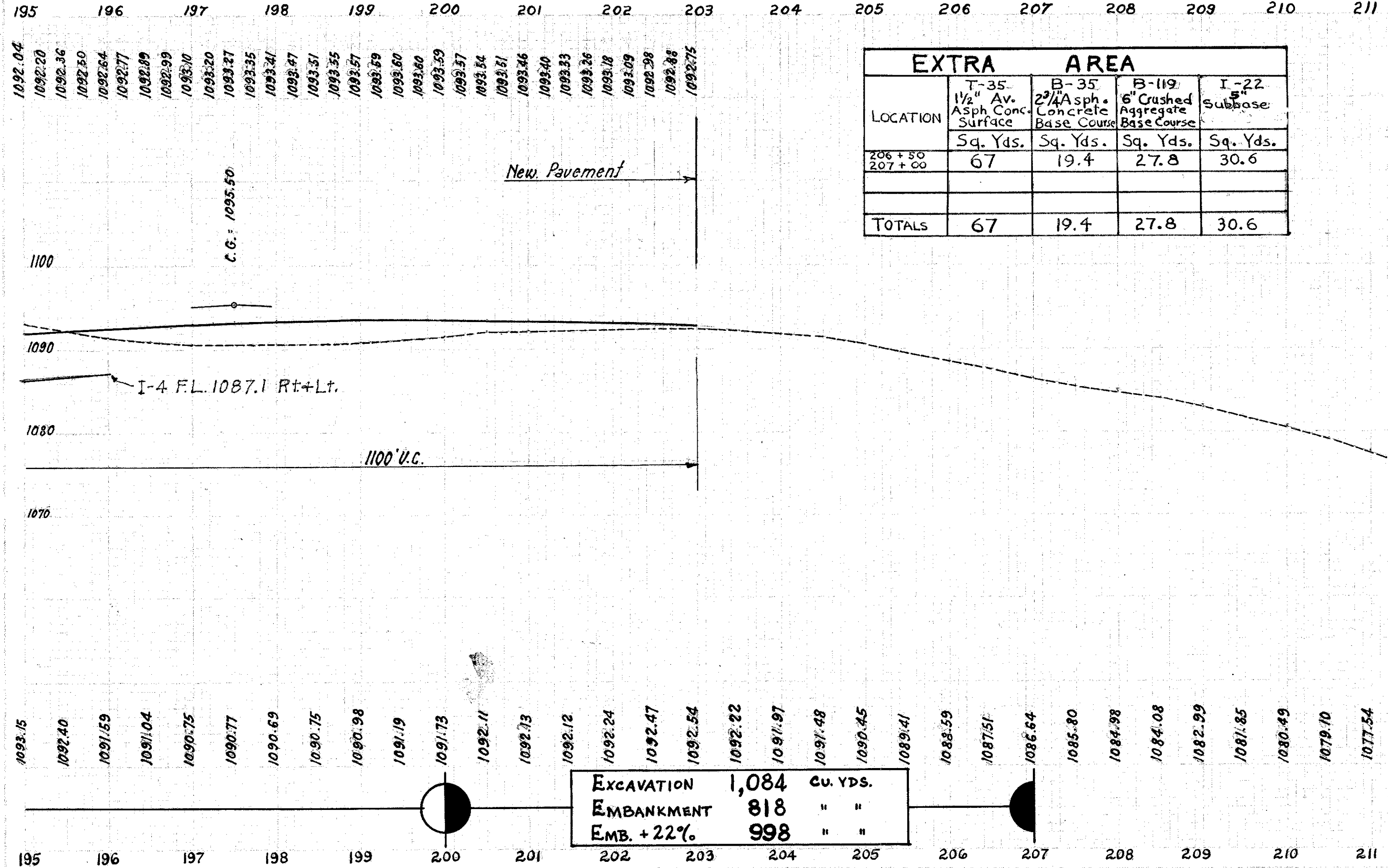
B.M. # 9 - 'X' on N.W. Corner 2nd Step House Right Sta. 198+62 Elevation - 1092.749

B.M. # 10 - R.R. Spike Found in N. Root 20' Maple Rt. Sta. 208+60 Elevation - 1083.174

EXTRA AREA				
LOCATION	T-35 1 1/2" Av. Asph. Conc. Surface	B-35 2 1/4" Asph. Concrete Base Course	B-119 6" Crushed Aggregate Base Course	I-22 6" Subbase
	Sq. Yds.	Sq. Yds.	Sq. Yds.	Sq. Yds.
206+50 207+00	67	19.4	27.8	30.6
<b>TOTALS</b>	<b>67</b>	<b>19.4</b>	<b>27.8</b>	<b>30.6</b>

DRIVEWAY QUANTITIES (SHEET # 6)							
LOCATION	B-119 5" Crushed Aggr. Base	T-35 2" Asph. Concrete Surface	E-101 Excavation	E-12 Removal of Existing Pipe 15" Under	I-11 15" Over 15" Pipes For Drives	I-L M-6401 Arch 55x56	S-11 Class. Concrete For Structures
	Cu. Yds.	Cu. Yds.	Cu. Yds.	Lin. Ft.	Lin. Ft.	Lin. Ft.	Cu. Yds.
183+99 (L)	6.3	2.5	8	15	24		
169+56 (L)	6.1	2.4	8	25	24		
170+62 (L)	7.2	2.8	10	116	124		
171+54 (L)	7.1	2.7	10				
172+58 (L)	6.3	2.5	8	24	24		
175+18 (L)	7.55	3.0	12		88		2.12
180+00 (L)	10.44	4.2	17				3.2
192+68 (L)	9.20	3.6		16	24		
183+90 (R)	6.3	2.5	8	15	24		
187+86 (R)				40			
188+91 (R)				20			
<b>TOTALS</b>	<b>66.2</b>	<b>26.2</b>	<b>81</b>	<b>271</b>	<b>88</b>	<b>213</b>	<b>24</b>

DRIVEWAY QUANTITIES					
LOCATION	B-119 5" Crushed Aggr. Base	T-35 2" Asph. Concrete Surface	E-101 Excavation	E-8 Removal of Existing Pipe 15" Under	I-11 15" Pipes For Drives
	Cu. Yds.	Cu. Yds.	Cu. Yds.	Lin. Ft.	Lin. Ft.
197+08 (R)	8.6	3.5	1	24	24
198+19 (R)	9.0	3.6	1	2.5	24
202+04 (R)	7.5	3.0	1	16	24
<b>TOTAL</b>	<b>25.1</b>	<b>10.1</b>	<b>3</b>	<b>65</b>	<b>72</b>



ROADWAY CULVERTS							
LOCATION	S-24 Removal of Existing Structure	E-101 Excavation	E-2 Excavation For Structures	E-3 Channel Excavation	S-1 Concrete For Structures	S-4 Reinforcing Steel	S-27 18" Pipe For Roadway Culverts
	Lump Sum	Cu. Yds.	Cu. Yds.	Cu. Yds.	Cu. Yds.	Lbs.	Lin. Ft.
197+58.75		4	12	6	6.6	292	66
<b>TOTALS</b>	<b>Lump Sum</b>	<b>4</b>	<b>12</b>	<b>6</b>	<b>6.6</b>	<b>292</b>	<b>66</b>