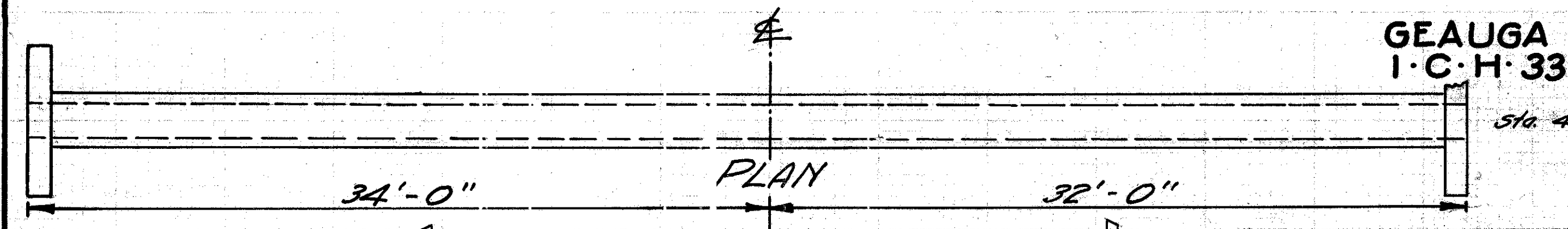


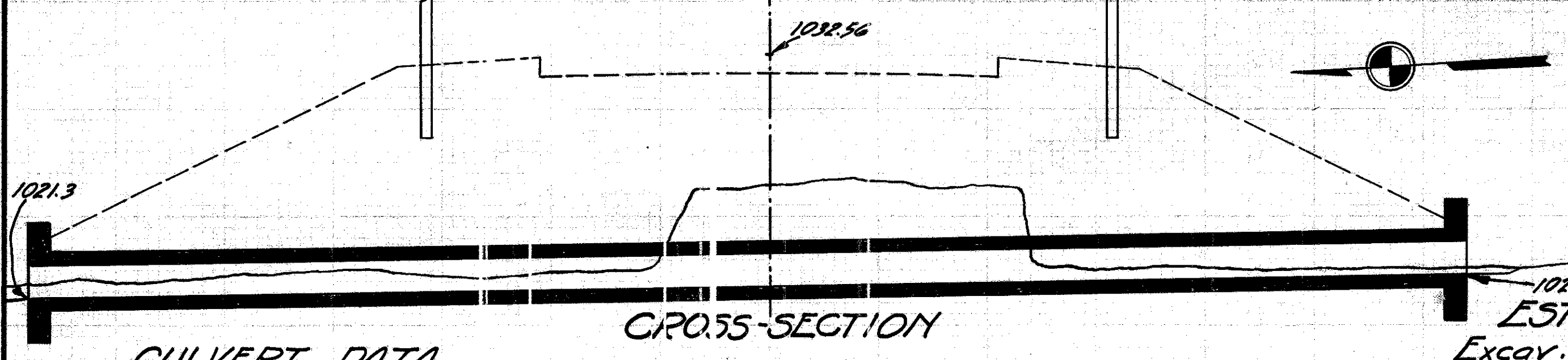
old CFN 280870040
new CFN 1819283
SLM 0.40, 3'x3'
CONCRETE BOX
SEE SHEET 4

①



old CFN 280870094
new CFN 1875232
SLM 0.94, 18"
SEE SHEET 5

③

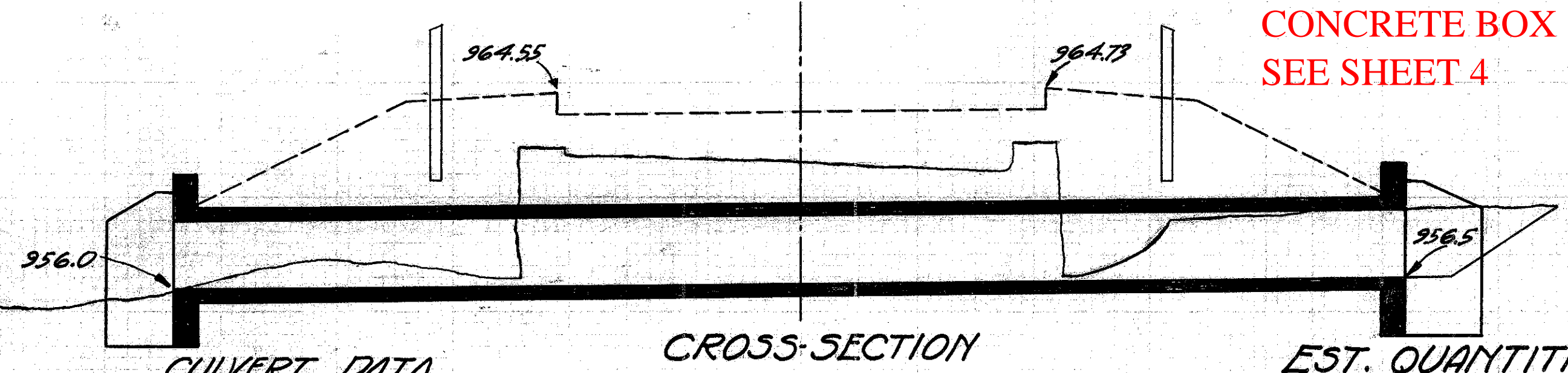


CULVERT DATA
Type Std. V.S.P. Enc. Culvert. Dr. #300
Size 18" x 66"
Work Reg'd. Remove old 8" Cor. pipe
Build new Std. V.S.P. Culvert.

Drawn by G.R.H. 12-13-'28.
Checked by F.A.R.
Div. Engr. L. A. Brown

EST. QUANTITIES
Excav. 25 Cu. Yds.
Conc. 1-5/2 2.7 Cu. Yds.
Conc. 1-8 9.9 Cu. Yds.
Steel 80 Lbs.
18" V.S.P. 66 Lin. ft.

STA. 49+43

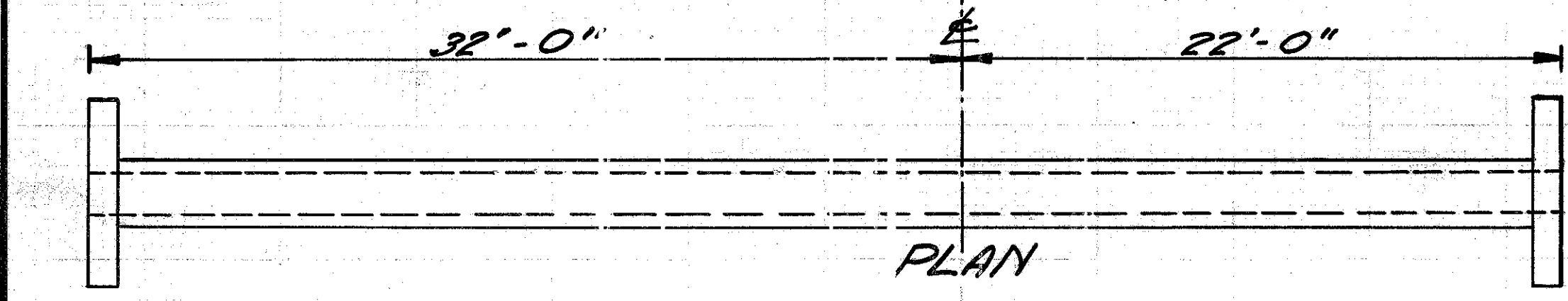


CULVERT DATA
Type Std. Conc. Box Culvert Dr. #301
Size 3' x 3' x 51'
Work Reg'd. Remove old 3' x 3' x 23' stone box.
Build new Std. Box Culvert.

Drawn by G.R.H. 12-13-'28
Checked by F.A.R.
Div. Engr. L. A. Brown

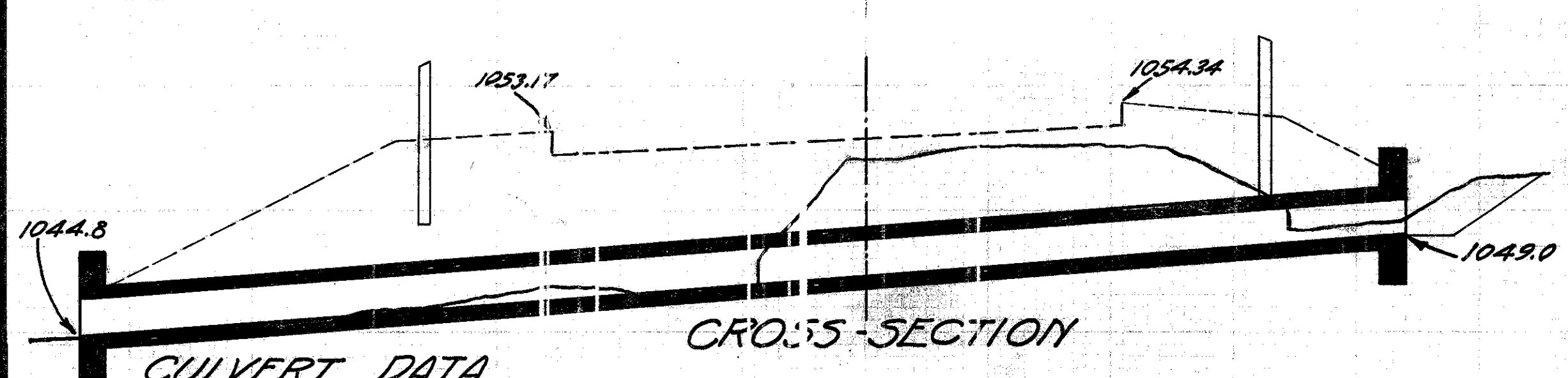
EST. QUANTITIES
Excav. 50 Cu. Yds.
Conc. 1-5/2 21.6 Cu. Yds.
Steel 1166 Lbs.

STA. 21+21



old CFN 280870100
new CFN 75233
SLM 1.00, 18"
SEE SHEET 5

④

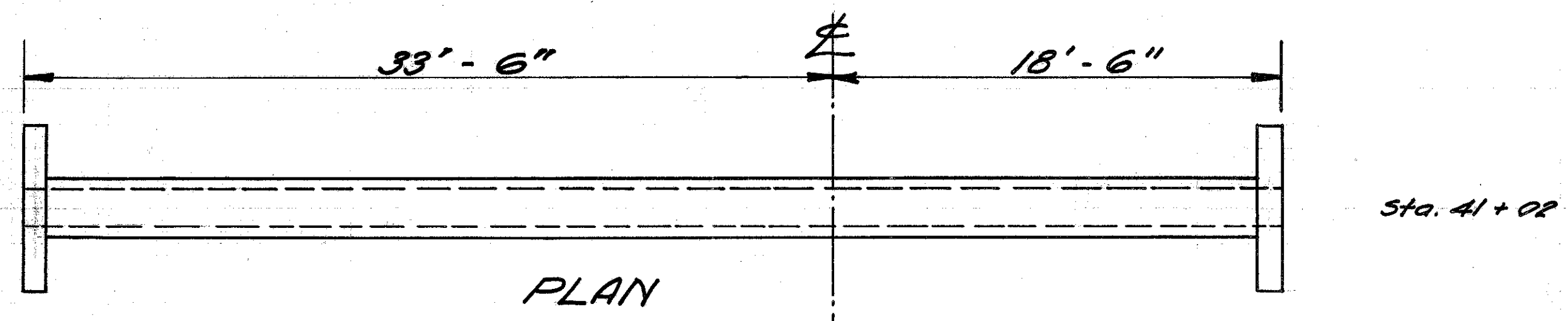


CULVERT DATA
Type Std. V.S.P. Enc. Culvert. Dr. #300
Size 18" x 54"
Work Reg'd. Remove old 10" pipe.
Build new Std. V.S.P. Culvert.

Drawn by G.R.H. 12-13-'28
Checked by F.A.R.
Div. Engr. L. A. Brown

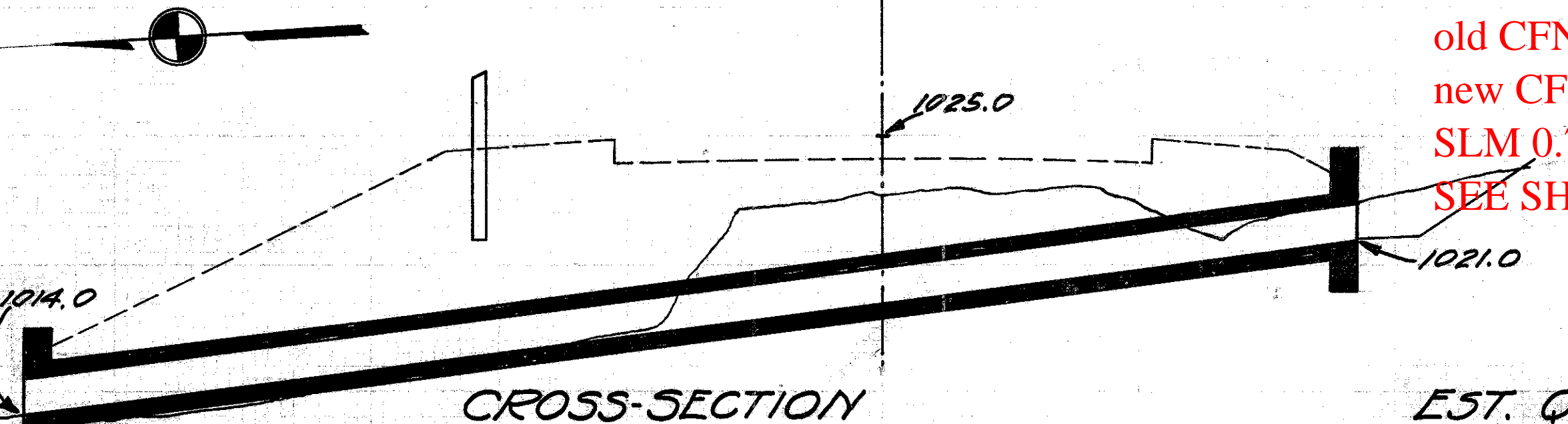
EST. QUANTITIES
Excav. 24 Cu. Yds.
Conc. 1-5/2 2.7 Cu. Yds.
Conc. 1-8 8.0 Cu. Yds.
Steel 80 Lbs.
18" V.S.P. 54 Lin. ft.

STA. 52+88



old CFN 280870078
new CFN 1846135
SLM 0.78, 18"
SEE SHEET 5

②

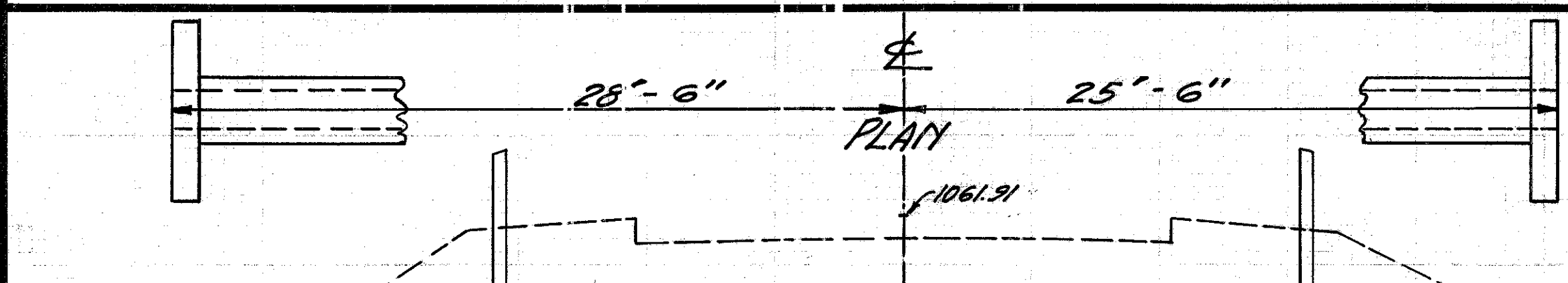


CULVERT DATA
Type Std. V.S.P. Enc. Culvert Dr. #300
Size 18" x 52"
Work Reg'd. Remove old pipe.
Build new Std. V.S.P. Culvert.

Drawn by G.R.H. 12-13-'28
Checked by F.A.R.
Div. Engr. L. A. Brown

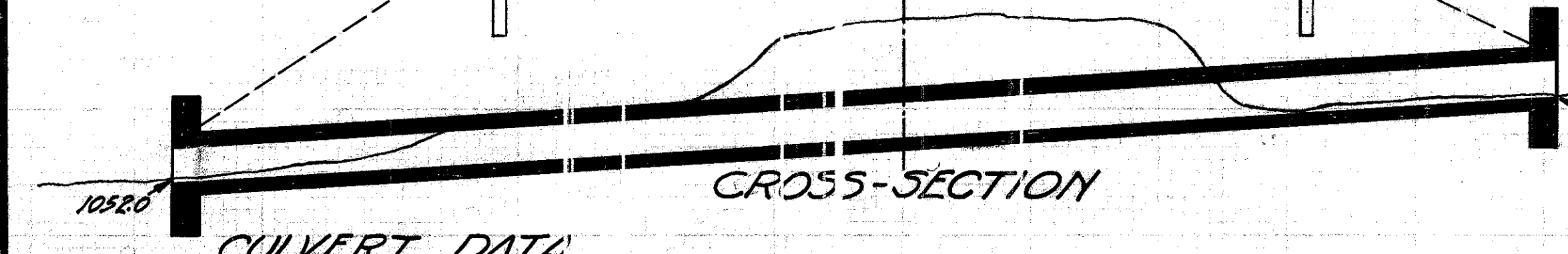
EST. QUANTITIES
Excav. 22 Cu. Yds.
Conc. 1-5/2 2.7 Cu. Yds.
Conc. 1-8 7.7 Cu. Yds.
Steel 80 Lbs.
18" V.S.P. 52 Lin. ft.

STA. 41+02



old CFN 280870107
new CFN 1875234
SLM 1.07, 18"
SEE SHEET 5

⑤



CULVERT DATA
Type Std. V.S.P. Enc. Culvert. Dr. #300
Size 18" x 54"
Work Reg'd. Remove old culvert.
Build new Std. V.S.P. Culvert.

Drawn by G.R.H. 12-13-'28
Checked by F.A.R.
Div. Engr. L. A. Brown

EST. QUANTITIES
Excav. 25 Cu. Yds.
Conc. 1-5/2 2.7 Cu. Yds.
Conc. 1-8 8.0 Cu. Yds.
Steel 80 Lbs.
18" V.S.P. 54 Lin. ft.

STA. 56+62