

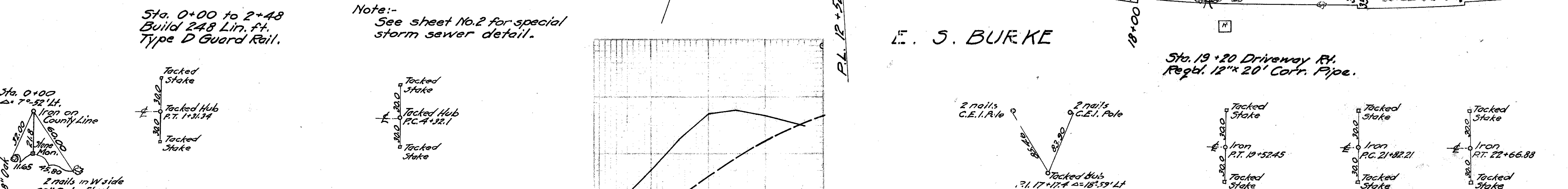
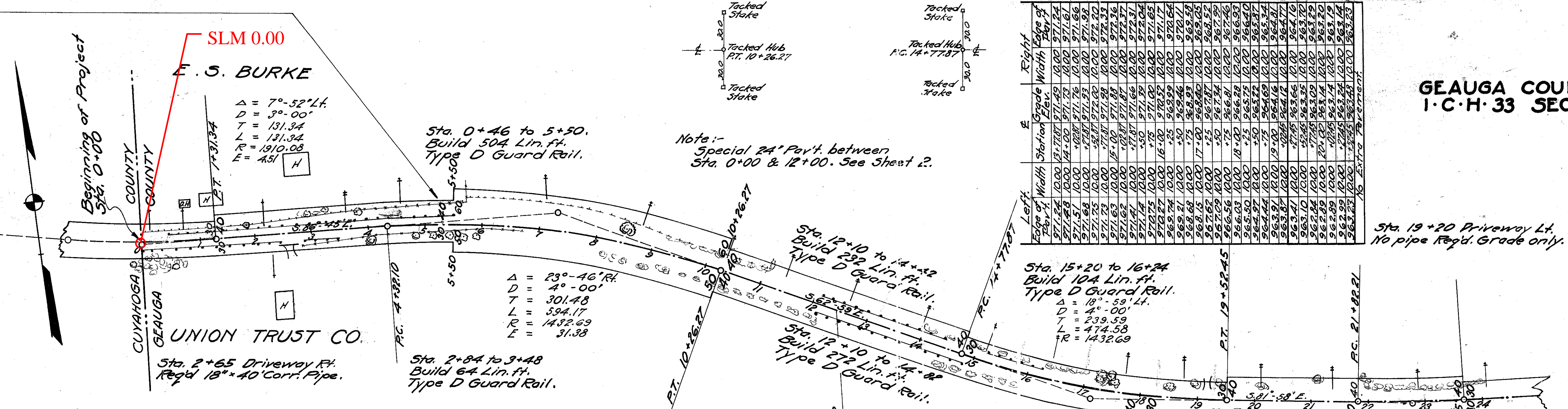
GEAUGA COUNTY I.C.H. 33 SEC. F

Right Edge of Pav't.	Width	Station	Grade Elev.	Width	Left Edge of Pav't.
891.96	12.00	3+32.10	892.21	12.00	891.96
894.46	12.00	+57.10	894.77	12.00	894.46
896.96	12.00	+82.10	897.27	12.00	897.92
898.75	12.00	4+00	899.00	12.00	899.26
901.96	12.00	+27.10	902.21	12.00	902.00
904.46	12.00	+52.10	904.71	12.00	905.36
906.96	12.00	+77.10	907.21	12.00	908.04
908.75	12.00	5+00	909.00	12.00	909.83
911.25	12.00	+25	911.50	12.00	912.33
913.75	12.00	+50	913.00	12.00	914.83
916.25	12.00	+75	915.50	12.00	917.33
918.75	12.00	6+00	919.00	12.00	919.83
921.25	12.00	+25	921.50	12.00	922.33
923.75	12.00	+50	923.00	12.00	924.83
926.25	12.00	+75	925.50	12.00	927.33
928.75	12.00	7+00	929.00	12.00	929.83
931.25	12.00	+25	931.50	12.00	932.33
933.75	12.00	+50	934.00	12.00	934.83
936.25	12.00	+75	936.50	12.00	937.33
938.75	12.00	8+00	939.00	12.00	939.83
941.20	12.00	+25	941.45	12.00	942.28
943.56	12.00	+50	943.81	12.00	944.64
945.82	12.00	+75	946.07	12.00	946.90
947.99	12.00	9+00	948.24	12.00	949.07
950.07	12.00	+25	950.32	12.00	951.15
952.04	12.00	+50	952.29	12.00	953.12
953.93	12.00	+75	954.18	12.00	955.01
954.02	12.00	+98.71	954.27	12.00	955.10
955.72	12.00	10+00	955.97	12.00	956.83
955.82	12.00	+01.27	956.07	12.00	956.72
957.50	12.00	+26.27	957.75	12.00	958.22
959.11	12.00	+51.27	959.36	12.00	959.65
960.60	12.00	+76.27	960.85	12.00	960.96
962.24	12.00	11+00	962.19	12.00	962.13
962.01	12.00	+01.27	962.26	12.00	962.19
963.31	12.00	+26.27	963.56	12.00	963.31

No Extra Pavement

Left Edge of Pav't.	Width	Station	Grade Elev.	Width	Right Edge of Pav't.
859.31	12.00	0+50	859.56	12.00	859.99
860.50	12.00	0+25	860.75	12.00	861.15
861.88	12.00	0+00	862.13	12.00	862.53
863.42	12.00	0+25	863.67	12.00	864.07
865.14	12.00	0+50	865.39	12.00	865.79
867.02	12.00	0+75	867.28	12.00	867.68
867.54	12.00	0+83.34	867.79	12.00	868.19
869.10	12.00	1+00	869.35	12.00	869.67
869.65	12.00	1+06.34	869.90	12.00	870.19
871.23	12.00	1+31.34	872.14	12.00	872.36
874.33	12.00	1+56.34	874.63	12.00	874.70
876.88	12.00	1+81.34	877.13	12.00	877.11
878.75	12.00	2+00	878.00	12.00	878.80
879.38	12.00	2+10.34	879.63	12.00	879.89
881.88	12.00	2+35.34	882.12	12.00	881.88

No Extra Pavement



Station	Ground Elev.	Proposed Elev.
896.2	899.00	
901.50	901.50	
904.00	904.00	
906.50	906.50	
909.00	909.00	
914.00	914.00	
919.00	919.00	
921.50	921.50	
926.50	926.50	
934.00	934.00	
936.50	936.50	
939.00	939.00	
941.45	941.45	
943.81	943.81	
946.07	946.07	
948.24	948.24	
950.32	950.32	
952.30	952.30	
954.18	954.18	
955.97	955.97	
957.66	957.66	
959.26	959.26	
960.78	960.78	
961.19	961.19	
963.50	963.50	
964.72	964.72	
965.85	965.85	
966.88	966.88	
967.87	967.87	
968.66	968.66	
969.41	969.41	
970.07	970.07	
970.83	970.83	
971.08	971.08	
971.42	971.42	
971.73	971.73	
972.00	972.00	
971.59	971.59	
971.52	971.52	
971.68	971.68	
971.33	971.33	
971.00	971.00	
970.52	970.52	
969.99	969.99	
969.46	969.46	
968.93	968.93	
968.40	968.40	
967.87	967.87	
967.34	967.34	
966.81	966.81	
966.28	966.28	
965.75	965.75	
965.22	965.22	
964.69	964.69	
964.16	964.16	
963.70	963.70	
963.17	963.17	
963.18	963.18	
963.14	963.14	