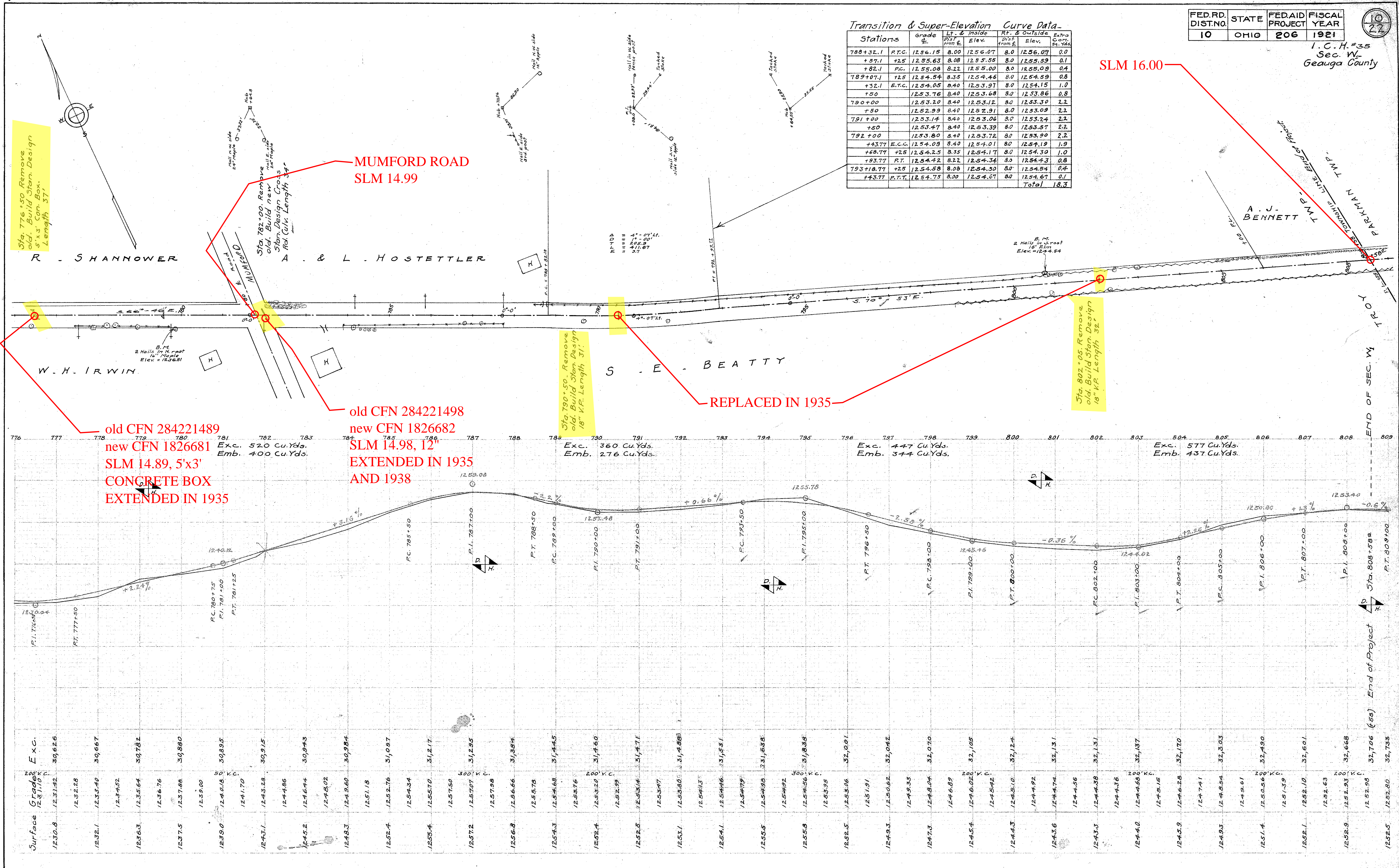


I.C.H. #35
Sec. W.
Geauga County

Transition & Super-Elevation Curve Data

Stations	grade	Dist. from E. P.T. & Inside	Elev.	Dist. from E. P.T. & Outside	Elev.	Extra C.C.T. Sq. Yds.	
788+32.1	P.T.C.	1256.15	8.00	1256.07	8.0	1256.07	0.0
+57.1	+25	1255.63	8.08	1255.55	8.0	1255.59	0.1
+82.1	P.C.	1255.08	8.22	1255.00	8.0	1255.09	0.4
789+07.1	P.C.	1254.54	8.35	1254.46	8.0	1254.59	0.8
+32.1	E.T.C.	1254.05	8.40	1253.97	8.0	1254.15	1.0
+50		1253.76	8.40	1253.68	8.0	1253.86	0.8
790+00		1253.20	8.40	1253.12	8.0	1253.30	2.2
+50		1252.99	8.40	1252.91	8.0	1253.09	2.2
791+00		1253.14	8.40	1253.06	8.0	1253.24	2.2
+50		1253.47	8.40	1253.39	8.0	1253.57	2.2
792+00		1253.80	8.40	1253.72	8.0	1253.90	2.2
+43.77	E.C.C.	1254.09	8.40	1254.01	8.0	1254.19	1.9
+69.77	+25	1254.25	8.35	1254.17	8.0	1254.30	1.0
+93.77	P.T.	1254.42	8.22	1254.34	8.0	1254.43	0.8
793+18.77	+25	1254.68	8.08	1254.50	8.0	1254.54	0.4
+43.77	P.T.T.	1254.75	8.00	1254.67	8.0	1254.67	0.1
						Total	18.3



Surface Grade	Elev.	E x c.
1230.8	1231.42	39,626
1232.1	1233.40	39,667
1236.3	1235.64	39,782
1237.5	1237.88	39,880
1239.0	1239.00	39,935
1243.1	1243.28	39,915
1244.8	1244.86	39,943
1245.2	1245.44	39,943
1248.3	1249.60	39,984
1252.4	1252.76	31,037
1255.4	1255.70	31,217
1257.2	1257.07	31,295
1257.8	1257.98	31,384
1254.3	1254.68	31,445
1252.4	1253.20	31,460
1252.5	1252.99	31,471
1253.1	1253.80	31,488
1254.1	1254.46	31,531
1255.5	1254.99	31,638
1255.8	1254.56	31,838
1252.5	1253.06	32,001
1249.3	1251.91	32,042
1247.3	1248.94	32,010
1245.4	1246.02	32,105
1244.3	1245.10	32,124
1243.6	1244.74	32,131
1243.3	1244.38	32,131
1244.0	1244.68	32,137
1245.9	1244.28	32,170
1249.3	1248.54	32,303
1251.4	1249.61	32,490
1252.1	1252.10	32,601
1252.9	1252.63	32,668
1252.5	1252.98	32,766 (68)
	1252.80	32,755