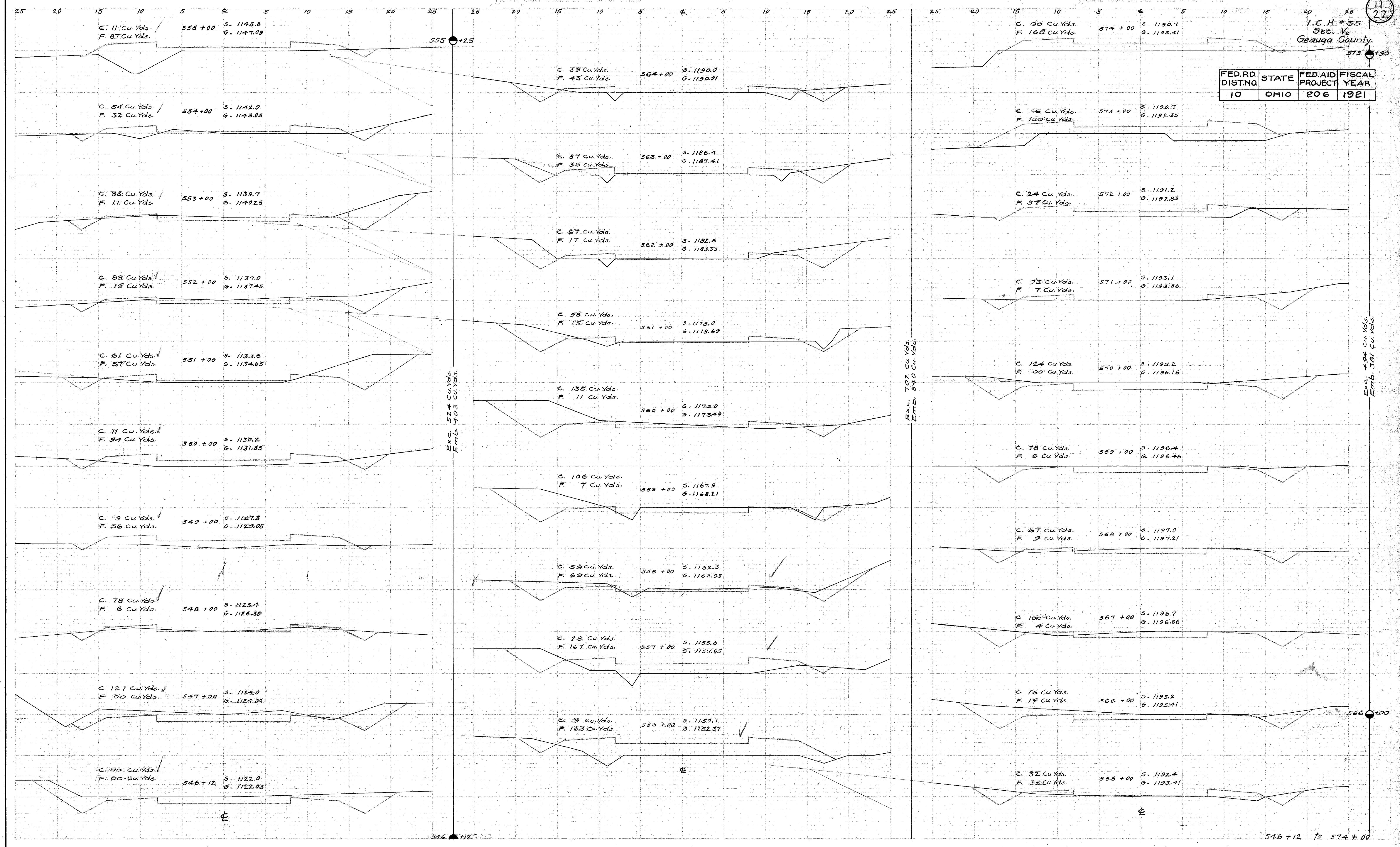


I.C.H. # 35  
Sec. V<sub>2</sub>  
Geauga County

| FED. RD. DIST. NO. | STATE | FED. AID PROJECT | FISCAL YEAR |
|--------------------|-------|------------------|-------------|
| 10                 | OHIO  | 206              | 1921        |



C. 11 Cu. Yds.  
F. 87 Cu. Yds.  
555+00 S. 1145.8  
G. 1147.03

C. 54 Cu. Yds.  
F. 32 Cu. Yds.  
554+00 S. 1142.0  
G. 1143.05

C. 83 Cu. Yds.  
F. 11 Cu. Yds.  
553+00 S. 1139.7  
G. 1140.25

C. 89 Cu. Yds.  
F. 19 Cu. Yds.  
552+00 S. 1137.0  
G. 1137.45

C. 61 Cu. Yds.  
F. 57 Cu. Yds.  
551+00 S. 1133.6  
G. 1134.65

C. 11 Cu. Yds.  
F. 94 Cu. Yds.  
550+00 S. 1130.2  
G. 1131.85

C. 9 Cu. Yds.  
F. 36 Cu. Yds.  
549+00 S. 1127.3  
G. 1128.05

C. 78 Cu. Yds.  
F. 6 Cu. Yds.  
548+00 S. 1125.4  
G. 1126.39

C. 127 Cu. Yds.  
F. 00 Cu. Yds.  
547+00 S. 1124.0  
G. 1124.00

C. 00 Cu. Yds.  
F. 00 Cu. Yds.  
546+12 S. 1122.0  
G. 1122.03

C. 39 Cu. Yds.  
F. 43 Cu. Yds.  
564+00 S. 1190.0  
G. 1190.91

C. 57 Cu. Yds.  
F. 35 Cu. Yds.  
563+00 S. 1186.4  
G. 1187.41

C. 67 Cu. Yds.  
F. 17 Cu. Yds.  
562+00 S. 1182.5  
G. 1183.33

C. 98 Cu. Yds.  
F. 15 Cu. Yds.  
561+00 S. 1178.0  
G. 1178.69

C. 135 Cu. Yds.  
F. 11 Cu. Yds.  
560+00 S. 1173.0  
G. 1173.49

C. 106 Cu. Yds.  
F. 7 Cu. Yds.  
559+00 S. 1167.9  
G. 1168.21

C. 58 Cu. Yds.  
F. 69 Cu. Yds.  
558+00 S. 1162.3  
G. 1162.93

C. 28 Cu. Yds.  
F. 167 Cu. Yds.  
557+00 S. 1158.6  
G. 1157.65

C. 9 Cu. Yds.  
F. 163 Cu. Yds.  
556+00 S. 1150.1  
G. 1152.37

C. 00 Cu. Yds.  
F. 165 Cu. Yds.  
574+00 S. 1190.7  
G. 1192.41

C. 16 Cu. Yds.  
F. 150 Cu. Yds.  
573+00 S. 1190.7  
G. 1192.35

C. 24 Cu. Yds.  
F. 57 Cu. Yds.  
572+00 S. 1191.2  
G. 1192.83

C. 53 Cu. Yds.  
F. 7 Cu. Yds.  
571+00 S. 1193.1  
G. 1193.86

C. 124 Cu. Yds.  
F. 00 Cu. Yds.  
570+00 S. 1195.2  
G. 1196.16

C. 78 Cu. Yds.  
F. 6 Cu. Yds.  
569+00 S. 1196.4  
G. 1196.46

C. 67 Cu. Yds.  
F. 9 Cu. Yds.  
568+00 S. 1197.0  
G. 1197.21

C. 100 Cu. Yds.  
F. 4 Cu. Yds.  
567+00 S. 1196.7  
G. 1196.86

C. 76 Cu. Yds.  
F. 19 Cu. Yds.  
566+00 S. 1195.2  
G. 1195.41

C. 32 Cu. Yds.  
F. 35 Cu. Yds.  
565+00 S. 1192.4  
G. 1193.41

Exc. 524 Cu. Yds.  
Emb. 403 Cu. Yds.

Exc. 702 Cu. Yds.  
Emb. 540 Cu. Yds.

Exc. 494 Cu. Yds.  
Emb. 381 Cu. Yds.

546+12 to 555+25

546+12 to 574+00