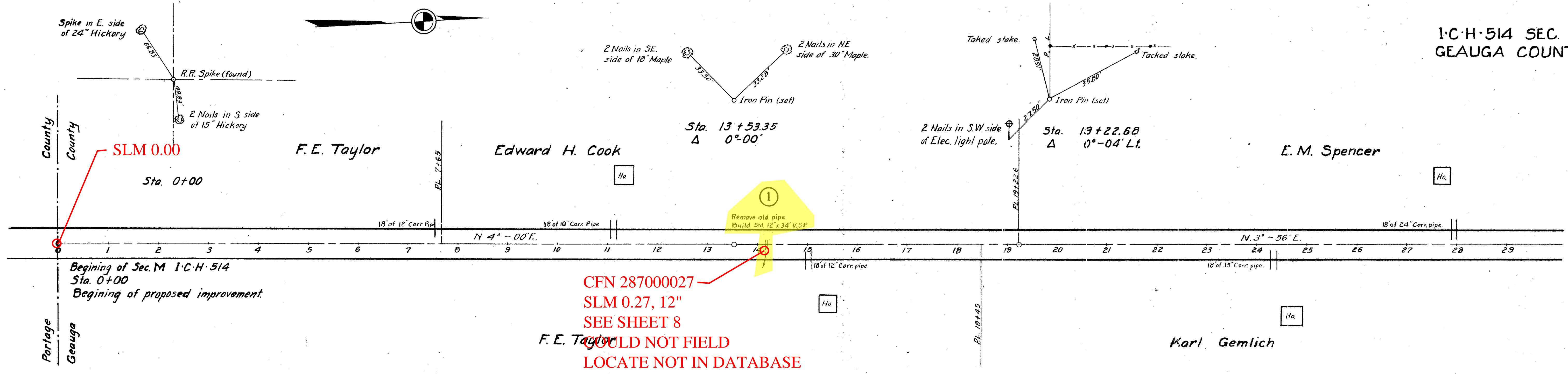


1-C-H-514 SEC.
GEAUGA COUNTY

| | |
|---------------|--|
| DATE | |
| BY | |
| SURVEYED | |
| PLOTTED | |
| NOTE BOOK | |
| AREAS CHECKED | |
| NO. | |



| | |
|-----------------|--|
| DATE | |
| BY | |
| ORIGINAL SURVEY | |
| PLOTTED | |
| NOTE BOOK | |
| AREAS CHECKED | |
| NO. | |

BM #1 Spike in root of 24" Hickory.
Sta. 0+30 45' Lt. Elev. 1118.13

BM #2 Spike in root of 36" Maple.
Sta. 13+70 27' Lt. Elev. 1154.13

BM #3 Spike in 18" Elm.
Sta. 24+70 27' Rt. Elev. 1153.84

Note: Profile grade line show is crown of graded roadway.

