

E. M. Spencer

Zuzi Verba

Sta. 44+01.18
Δ 0°-20' Lt.

Belle B. Ryder

Isac & Etta
Kilmer

Sta. 58+55.05
Δ 0°-00'

Karl Gemlich

Zuzi Verba

Belle B. Ryder

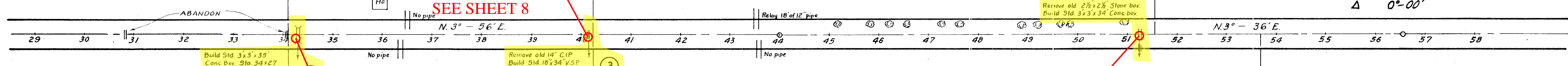
James Blazek

CFN 287000076
SLM 0.76, 18"
SEE SHEET 8

CFN 287000065
SLM 0.65, 3'x3'
CONCRETE BOX
SEE SHEET 8

CFN 287000097
SLM 0.97, 3'x3'
SANDSTONE/
CONCRETE BOX
SEE SHEET 8

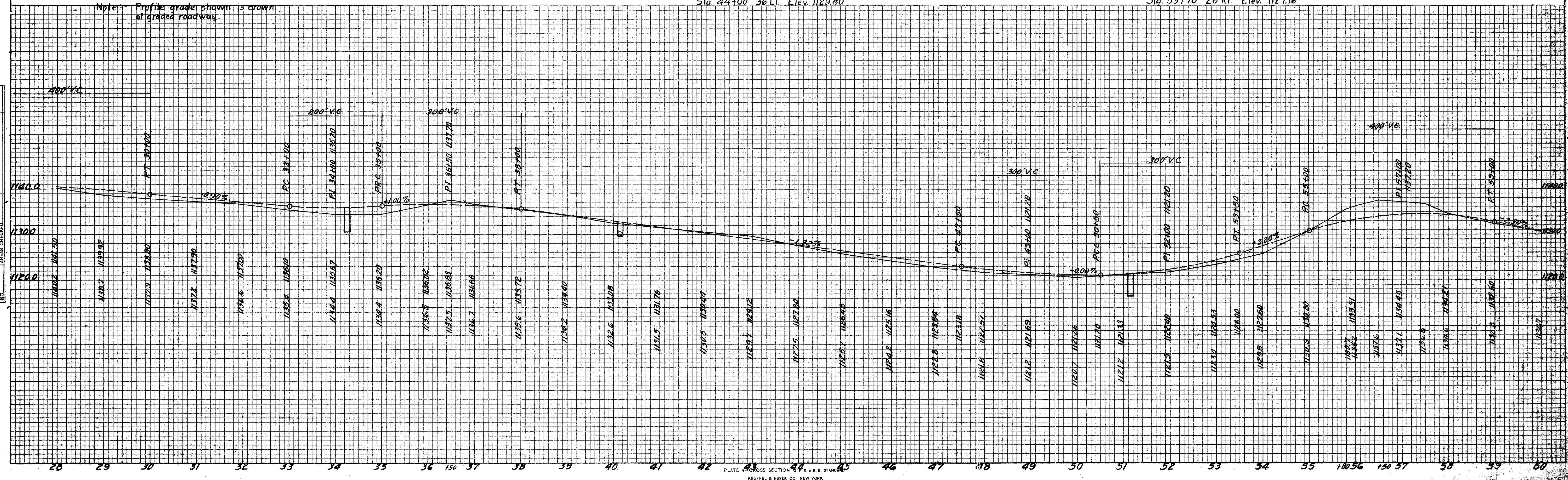
DATE	
BY	
FINAL SURVEY	
SURVEY PLOTTED	
TEMPLATE	
AREAS	
NOTE BOOK	
AREAS CHECKED	
NO.	



Note: Profile grade shown is crown of graded roadway.

B.M.#4 Spike in root of 24" Maple.
Sta. 44+00 36' Lt. Elev. 1129.80

B.M.#5 Spike in root of 40" Wild Cherry.
Sta. 53+70 26' Rt. Elev. 1127.16



DATE	
BY	
ORIGINAL SURVEY	
SURVEY PLOTTED	
TEMPLATE	
AREAS	
NOTE BOOK	
AREAS CHECKED	
NO.	