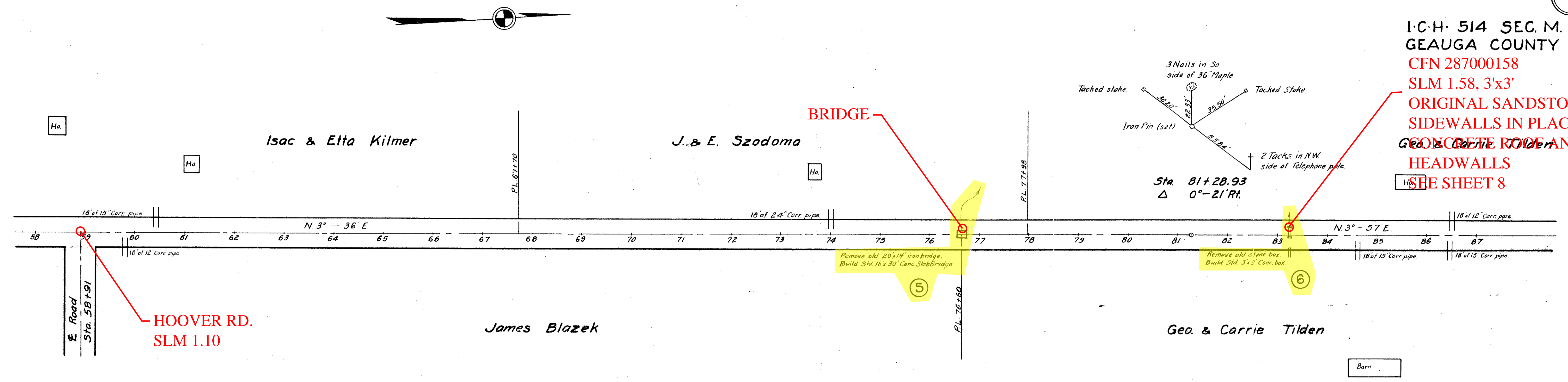


I.C.H. 514 SEC. M.
GEAUGA COUNTY
CFN 287000158
SLM 1.58, 3'x3'
ORIGINAL SANDSTONE
SIDEWALLS IN PLACE
CONCRETE ROAD AND
HEADWALLS
SEE SHEET 8

DATE	
BY	
FINAL SURVEY	
SURVEYED	
PLOTTED	
TEMPLATE	
NOTE BOOK	
AREAS CHECKED	
NO.	



DATE	
BY	
ORIGINAL SURVEY	
SURVEYED	
PLOTTED	
TEMPLATE	
NOTE BOOK	
AREAS CHECKED	
NO.	

