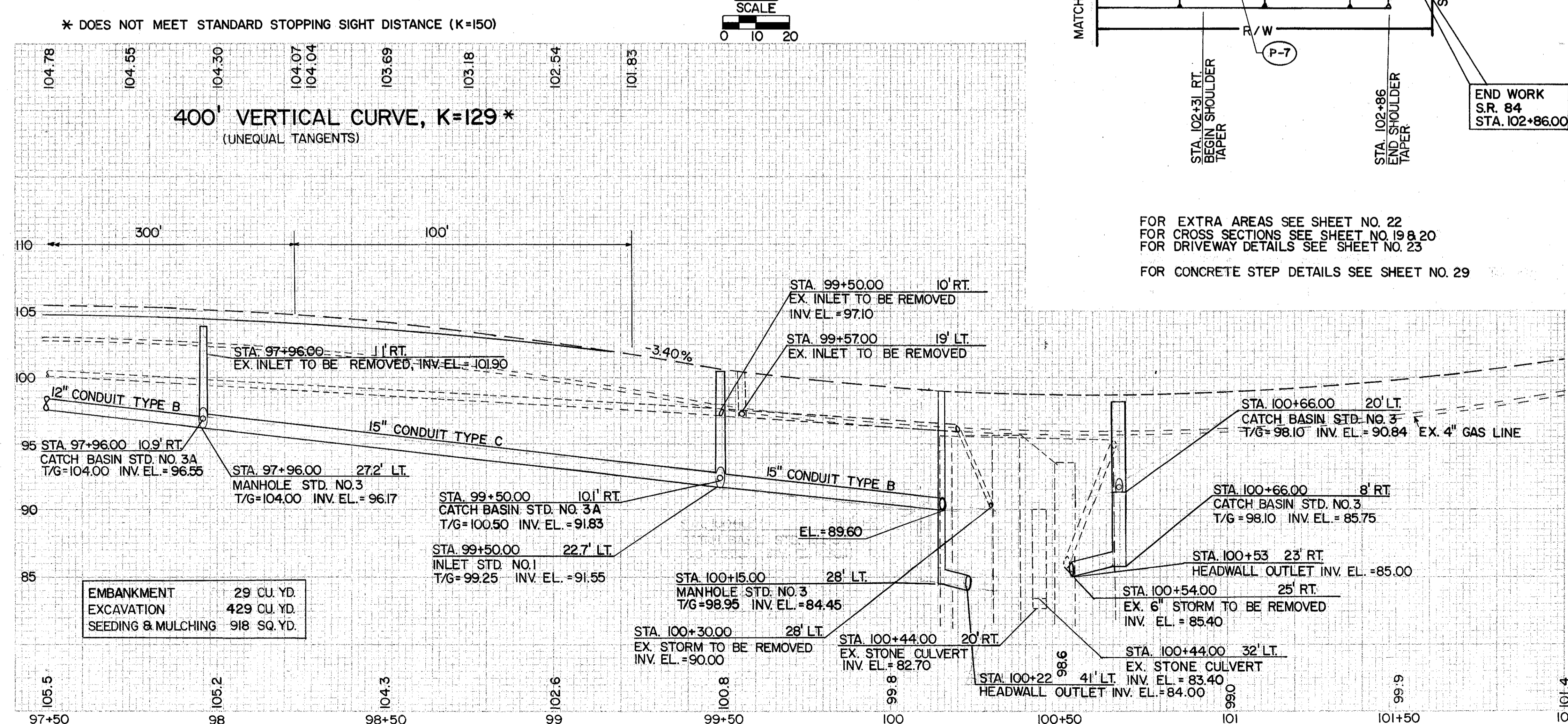
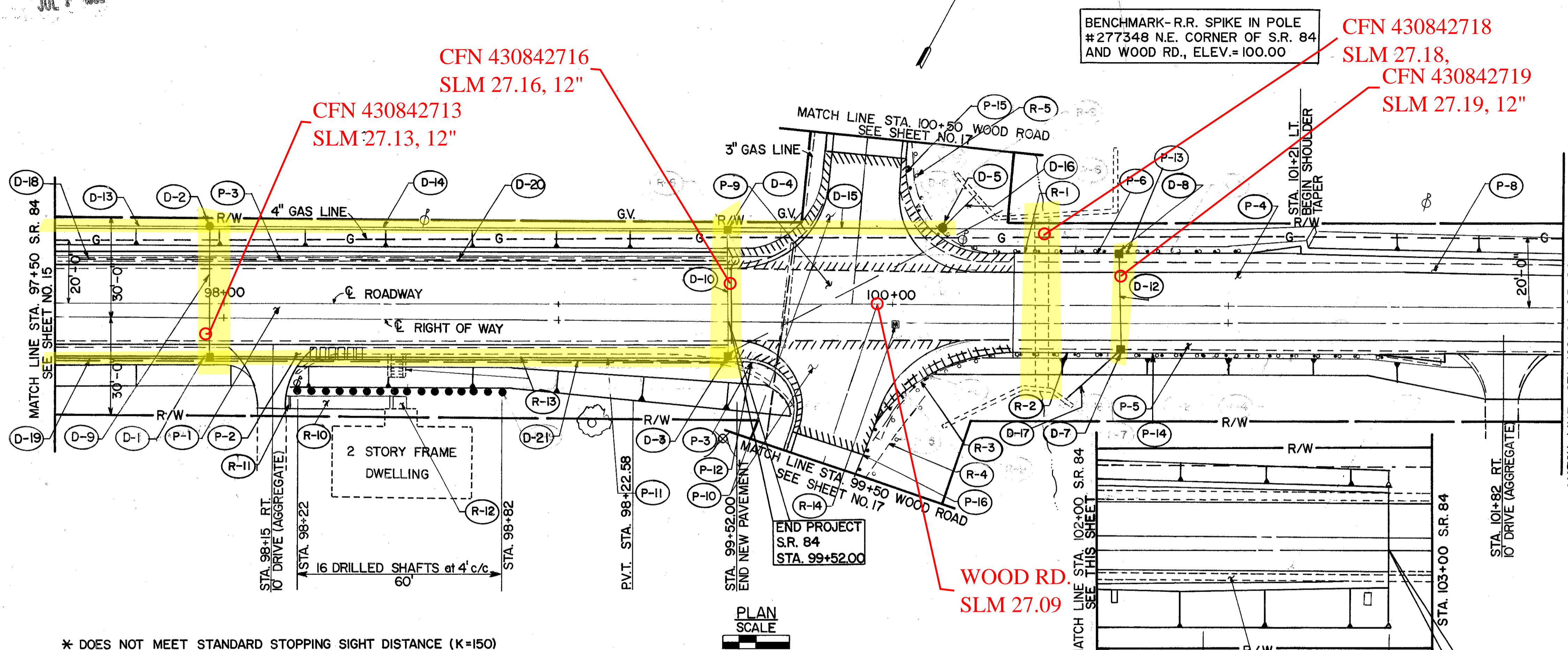


MICROFILMED
JUL 1 1989



| REF. NO. | STATION TO STATION | SIDE | ESTIMATED QUANTITIES | REF. NO. | STATION TO STATION | SIDE | TOTALS |
|----------|-----------------------|------|--|----------|------------------------|------|--------|
| D-1 | 97+96.00 | RT | 6" SHALLOW PIPE UNDERDRAIN AS PER PLAN | P-1 | 100+33.50 TO 101+21.00 | RT | 400 |
| D-2 | 97+96.00 | LT | CATCH BASIN STANDARD NO. 3A | P-2 | 100+30.50 TO 101+68.00 | RT | 206 |
| D-3 | 99+50.00 | RT | CATCH BASIN STANDARD NO. 3A | P-3 | 97+50.00 TO 99+52.00 | RT | 20 |
| D-4 | 99+50.00 | LT | INLET STANDARD NO. 1-I | P-4 | 100+34.00 TO 102+11.00 | RT | 88 |
| D-5 | 100+15.00 | LT | MANHOLE STANDARD NO. MH-3 | P-5 | 100+34.00 TO 101+21.00 | LT | 138 |
| D-6 | 100+15.00 | RT | 12" CONDUIT TYPE B | P-6 | 100+34.00 TO 101+21.00 | RT | 37 |
| D-7 | 100+66.00 | RT | 15" CONDUIT TYPE B | P-7 | 101+21.00 TO 102+86.00 | RT | 86 |
| D-8 | 100+66.00 | LT | 6" CONDUIT TYPE F | P-8 | 101+21.00 TO 102+86.00 | LT | 206 |
| D-9 | 100+66.00 | RT | CONCRETE STEPS STANDARD TYPE B | P-9 | 99+52.00 TO 100+34.00 | RT | 56 |
| D-10 | 100+66.00 | LT | CONCRETE STEPS STANDARD TYPE B | P-10 | 100+34.00 TO 101+21.00 | LT | 19 |
| D-11 | 100+66.00 | RT | CONCRETE STEPS STANDARD TYPE B | P-11 | 97+50.00 TO 99+52.00 | RT | 21 |
| D-12 | 100+66.00 | LT | CONCRETE STEPS STANDARD TYPE B | P-12 | 97+50.00 TO 99+52.00 | LT | 560 |
| D-13 | 97+50.00 TO 97+96.00 | LT | CONCRETE STEPS STANDARD TYPE B | P-13 | 100+34.00 TO 101+21.00 | LT | 183 |
| D-14 | 97+50.00 TO 99+50.00 | LT | CONCRETE STEPS STANDARD TYPE B | P-14 | 100+34.00 TO 101+21.00 | LT | 206 |
| D-15 | 99+50.00 TO 100+15.00 | LT | CONCRETE STEPS STANDARD TYPE B | P-15 | 100+34.00 TO 101+21.00 | LT | 14 |
| D-16 | 100+15.00 | LT | CONCRETE STEPS STANDARD TYPE B | P-16 | 99+52.00 TO 100+34.00 | LT | 22 |
| D-17 | 100+15.00 | RT | CONCRETE STEPS STANDARD TYPE B | P-17 | 100+34.00 TO 101+21.00 | RT | 4 |
| D-18 | 100+15.00 | RT | CONCRETE STEPS STANDARD TYPE B | P-18 | 100+34.00 TO 101+21.00 | RT | 3 |
| D-19 | 100+15.00 | LT | CONCRETE STEPS STANDARD TYPE B | P-19 | 100+34.00 TO 101+21.00 | LT | 7 |
| D-20 | 100+15.00 | LT | CONCRETE STEPS STANDARD TYPE B | P-20 | 100+34.00 TO 101+21.00 | LT | 11 |
| D-21 | 100+15.00 | RT | CONCRETE STEPS STANDARD TYPE B | P-21 | 100+34.00 TO 101+21.00 | RT | 14 |
| TOTALS | | | | TOTALS | | | 349 |

PLAN AND PROFILE - STA. 97+50 TO STA. 103+00, S.R. 84