

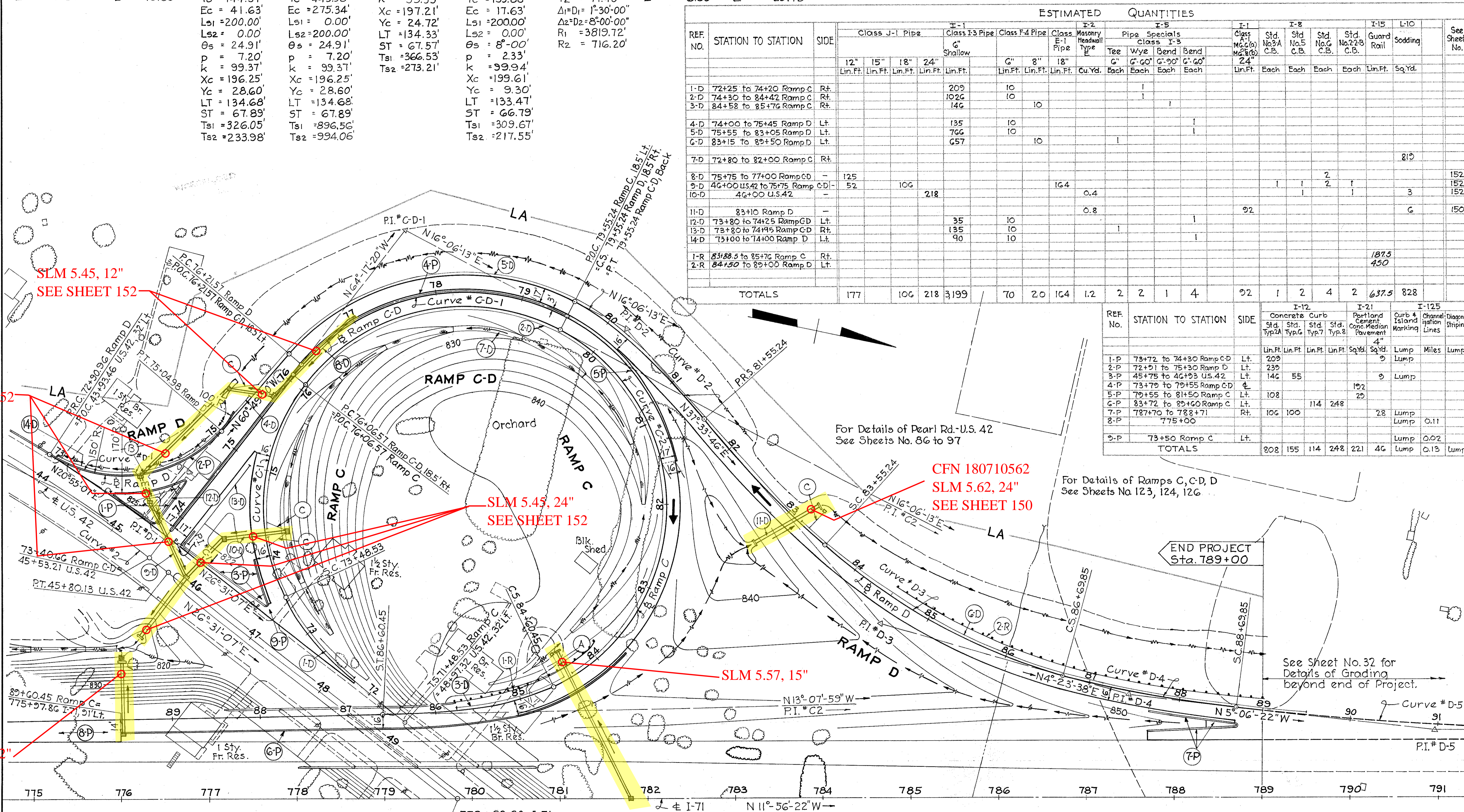
CURVE # D-1 Δ = 81°-44'-57" D = 38°-11'-50" R = 150.00' L = 214.02' T = 129.82' E = 48.37'	CURVE # C-D-1 Δ = 80°-23'-33" D = 23°-03'-24" R = 248.50' L = 348.67' T = 209.97' E = 76.83'	CURVE # C-1 Δ = 89°-11'-33" Δc = 64°-16'-53" Dc = 24°-54'-40" Rc = 230.00' Lc = 258.04' Tc = 144.51' Ec = 41.63' Ls1 = 200.00' Ls2 = 0.00' θs = 24.91' p = 7.20' k = 99.37' Xc = 196.25' Yc = 28.60' LT = 134.68' ST = 67.89' Tsl = 326.05' Tsz = 233.98'	CURVE # C-2 Δ = 150°-45'-48" Δc = 125°-51'-08" Dc = 24°-54'-40" Rc = 230.00' Lc = 505.20' Tc = 449.96' Ec = 275.34' Ls1 = 0.00' Ls2 = 200.00' θs = 24.91' p = 7.20' k = 99.37' Xc = 196.25' Yc = 28.60' LT = 134.68' ST = 67.89' Tsl = 896.56' Tsz = 994.06'	CURVE # D-2 Dc = θs = 21°-27'-33" Rc = 267.00' Lc = 0.00' Ls1 = 200.00' p = 6.21' Xc = 197.21' Yc = 24.72' LT = 134.33' ST = 67.57' Tsl = 366.53' Tsz = 273.21'	CURVE # D-3 Δ = 33°-10'-08" Δc = 25°-10'-08" Dc = 8°-00' Rc = 716.20' Lc = 314.61' Tc = 159.88' Ec = 17.63' Ls1 = 200.00' Ls2 = 0.00' θs = 8°-00' p = 2.33' k = 99.94' Xc = 199.61' Yc = 9.30' LT = 133.47' ST = 66.79' Tsl = 309.67' Tsz = 217.55'	CURVE # D-4 Δ = 9°-30'-00" Ls = 200.00' θa = 6°-30'-00" pa = 1.89' T1 = 123.06' T2 = 77.40' ΔI=D1 = 1°-30'-00" Δ2=D2 = 8°-00'-00" R1 = 3819.72' R2 = 716.20'	CURVE # D-5 Δ = 6°-50'-00" D = 1°-30'-00" R = 3819.72' L = 455.56' T = 228.05' E = 6.80'	CURVE # 2, U.S. 42 Δ = 20°-05'-46" D = 3°-00" R = 1909.86' L = 669.87' T = 338.41' E = 29.75'
---	---	--	---	---	--	---	---	--

CUYAHOGA COUNTY
CUY-42-3.38

FED. RD. DIVISION	STATE	PROJECT	117 263
2	OHIO	I71-5(1)23G	

REF. NO.	STATION TO STATION	SIDE	ESTIMATED QUANTITIES															See Sheet No.								
			Class J-1 Pipe				E-1 Class I-3 Pipe		Class F-4 Pipe		Class E-1 Pipe		Masonry Headwall Type E			Pipe Specials class I-3			Class I-1		I-8		I-15		L-10	
			12" Lin.Ft.	15" Lin.Ft.	18" Lin.Ft.	24" Lin.Ft.	6" Shallow Lin.Ft.	8" Lin.Ft.	10" Lin.Ft.	18" Lin.Ft.	Cu.Yd.	Each	Each	Each	Each	Each	Each		Each	Each	Each	Each	Each	Each	Sq.Yd.	
1-D	72+25 to 74+20 Ramp C	Rt.					209		10																	
2-D	74+30 to 84+42 Ramp C	Rt.					1026		10																	
3-D	84+58 to 85+76 Ramp C	Rt.					146		10																	
4-D	74+00 to 75+45 Ramp D	Lt.					135		10																	
5-D	75+55 to 83+05 Ramp D	Lt.					766		10																	
6-D	83+15 to 89+50 Ramp D	Lt.					657		10																	
7-D	72+80 to 82+00 Ramp C	Rt.																						819		
8-D	75+75 to 77+00 Ramp C-D	-	125																						152	
9-D	46+00 U.S.42 to 75+75 Ramp C-D	-	52	106						164															152	
10-D	46+00 U.S.42	-					218																		152	
11-D	83+10 Ramp D	-																							150	
12-D	73+80 to 74+25 Ramp C-D	Lt.					35		10																	
13-D	73+80 to 74+95 Ramp C-D	Rt.					135		10																	
14-D	73+00 to 74+00 Ramp D	Lt.					90		10																	
1-R	83+88.5 to 85+76 Ramp C	Rt.																							1875	
2-R	84+30 to 89+00 Ramp D	Lt.																							450	
TOTALS			177	106	218	3199			70	20	164	1.2	2	2	1	4	92	1	2	4	2	637.5	828			

REF. NO.	STATION TO STATION	SIDE	I-12 Concrete Curb				I-21 Portland Cement Conc. Median		I-125 Curb & Island Marking		Channel-Diagonal Stripping	
			Std. Typ.2A Lin.Ft.	Std. Typ.7 Lin.Ft.	Std. Typ.8 Lin.Ft.	Std. Typ.8 Lin.Ft.	Sq.Yd.	Sq.Yd.	Lump	Miles	Lump	Lump
1-P	73+72 to 74+30 Ramp C-D	Lt.	209									
2-P	72+91 to 75+30 Ramp D	Lt.	239									
3-P	45+75 to 46+93 U.S.42	Lt.	146	55								
4-P	73+79 to 79+55 Ramp C-D	Lt.					192					
5-P	79+55 to 81+50 Ramp C	Lt.	108				29					
6-P	83+72 to 89+60 Ramp C	Lt.			114	248						
7-P	787+70 to 788+71	Rt.	106	100				28				
8-P	775+00											
9-P	73+50 Ramp C	Lt.										
TOTALS			808	155	114	248	221	46				



For Details of Pearl Rd.-U.S. 42
See Sheets No. 86 to 97

For Details of Ramps C, C-D, D
See Sheets No. 123, 124, 126

See Sheet No. 32 for
Details of Grading
beyond end of Project.