

MICROFILMED
FEB 2 1984

FED. RD. DIVISION	STATE	PROJECT	2 263
2	OHIO	I-71-5(II)236	

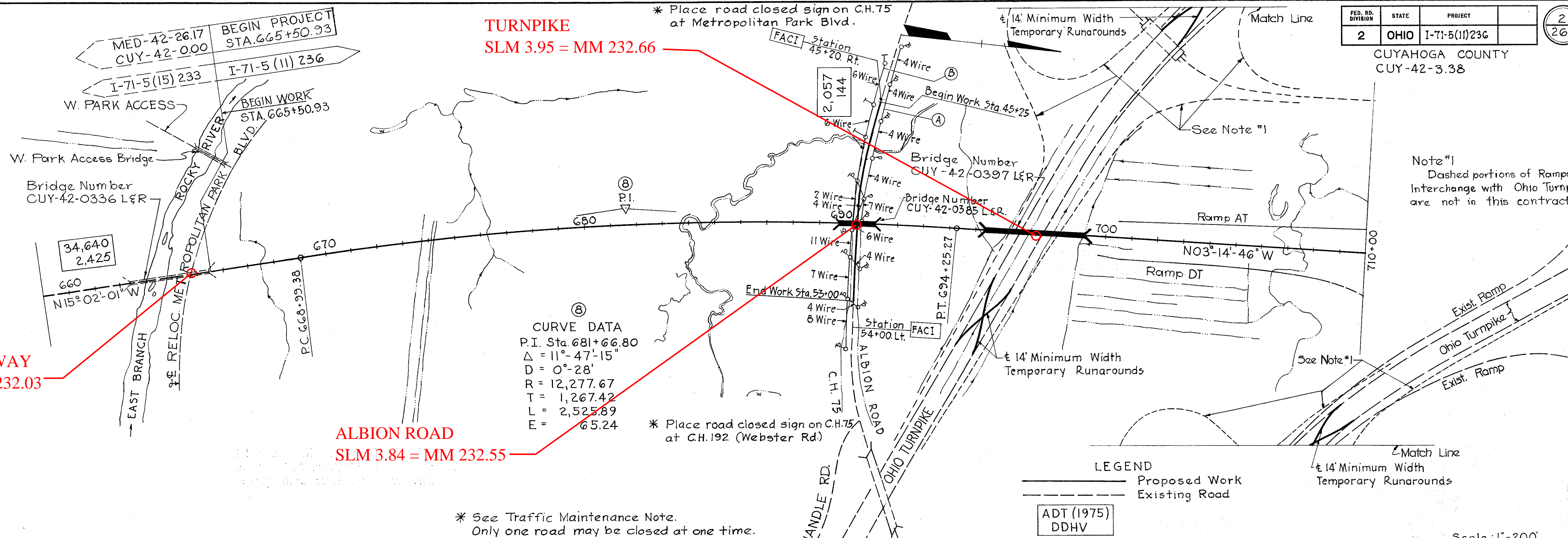
CUYAHOGA COUNTY
CUY-42-3.38

VALLEY PARKWAY
SLM 3.32 = MM 232.03

TURNPIKE
SLM 3.95 = MM 232.66

ALBION ROAD
SLM 3.84 = MM 232.55

WHITNEY ROAD
SLM 4.67 = 233.38



CURVE DATA
P.I. Sta. 681+66.80
Δ = 11°-47'-15"
D = 0°-28'
R = 12,277.67
T = 1,267.42
L = 2,525.89
E = 65.24

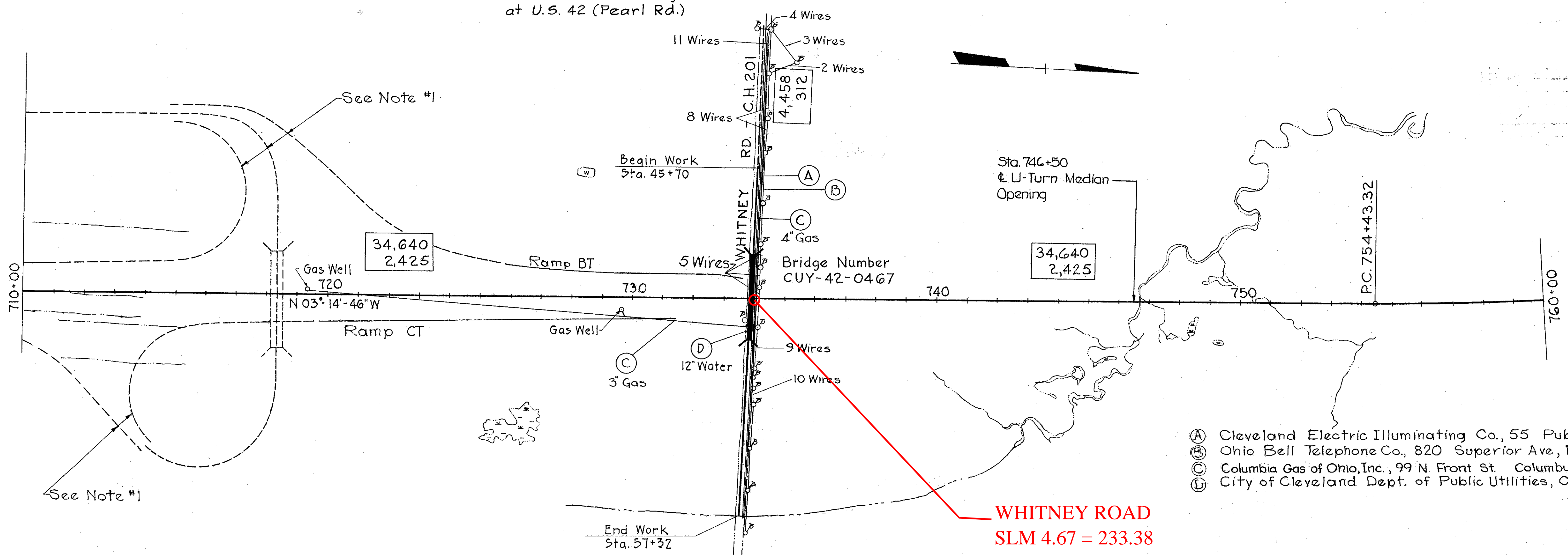
* See Traffic Maintenance Note.
Only one road may be closed at one time.

* Place road closed sign on C.H.75
at C.H.192 (Webster Rd.)

LEGEND
— Proposed Work
--- Existing Road
ADT (1975)
DDHV

Scale: 1"=200'

* Place road closed sign on C.H.201
at U.S. 42 (Pearl Rd.)



- (A) Cleveland Electric Illuminating Co., 55 Public Square, Cleveland Ohio.
- (B) Ohio Bell Telephone Co., 820 Superior Ave, N.W. Cleveland 13, Ohio.
- (C) Columbia Gas of Ohio, Inc., 99 N. Front St. Columbus 15, Ohio
- (D) City of Cleveland Dept. of Public Utilities, Cleveland 14, Ohio.

* Place road closed sign on C.H.201
at C.H.192 (Webster Rd.)

Scale: 1"=200'