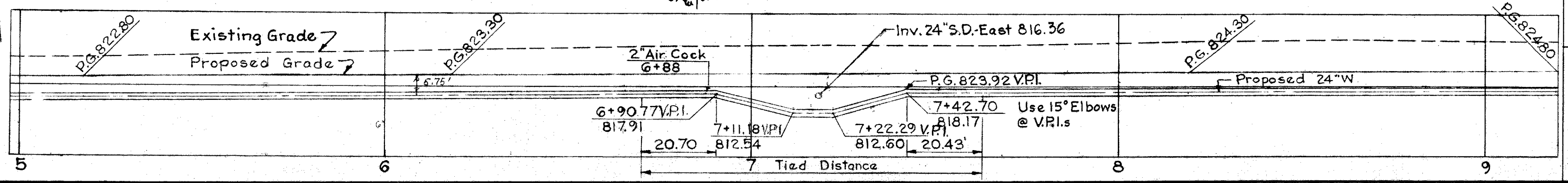
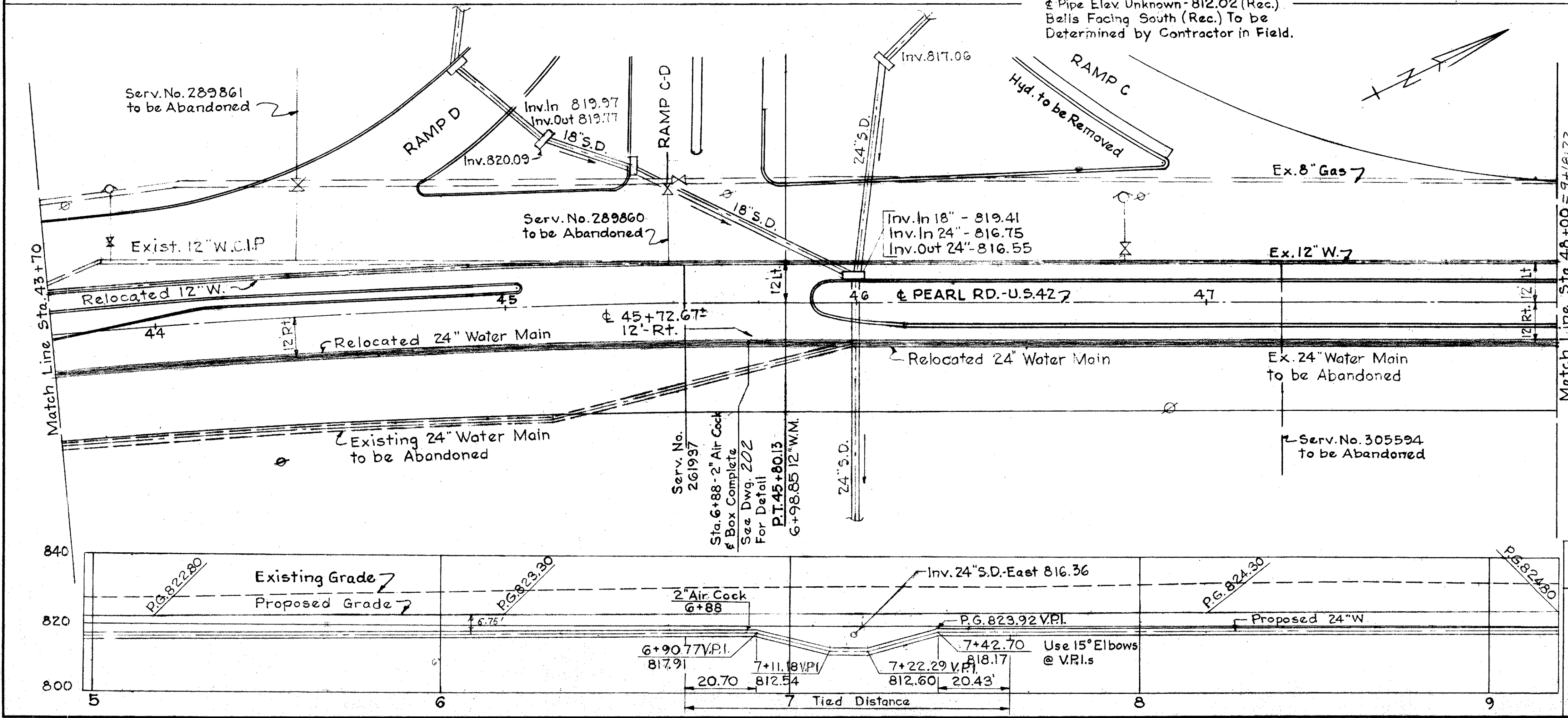
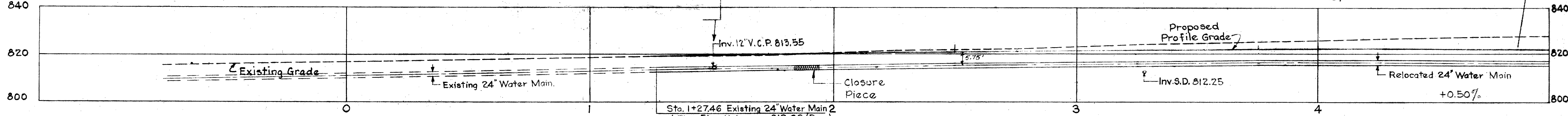
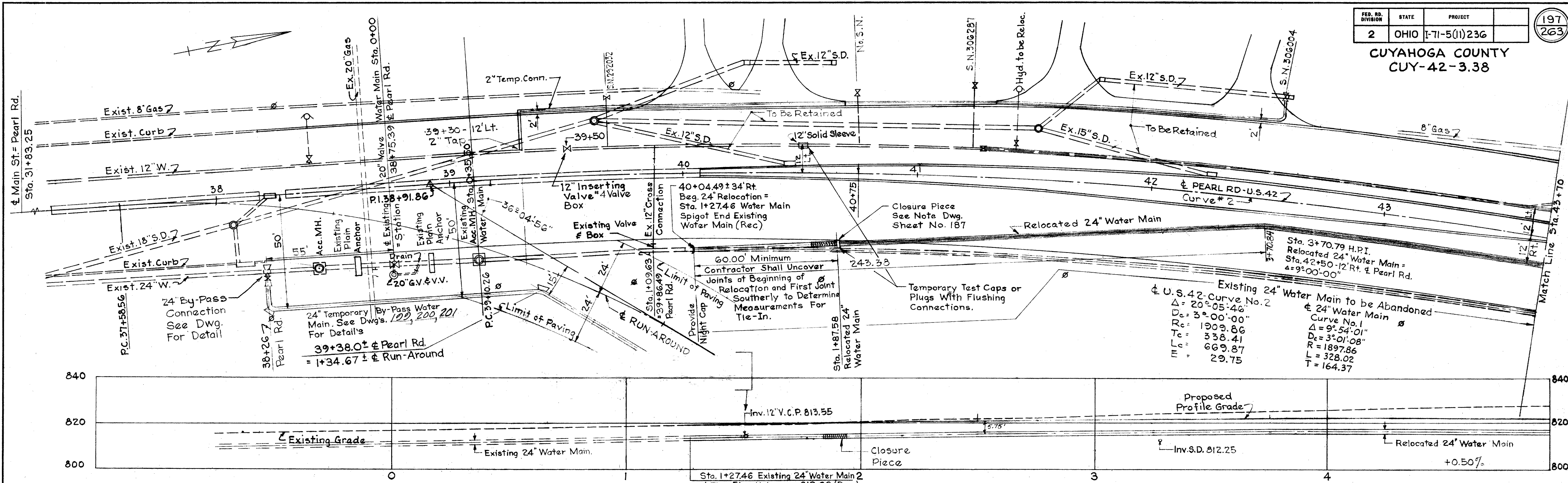


CUYAHOGA COUNTY
CUY-42-3.38



Note:
Stations for beginning and end of work and fittings on the Relocated 24" Water Main are based on the Record shop drawings for the existing 24" Water Main with the center of existing valve at Sta. 38 + 75.39 Pearl Rd. equal to 0+00 Relocated Water Main. Their accuracy cannot be guaranteed. It shall be the responsibility of the Contractor to locate exactly the joints nearest the ends of Relocation indicated and supply the Engineer and Pipe Fabricator with the measurements.

PREPARED BY J.E. GREINER COMPANY
CONSULTING ENGINEERS
BALTIMORE-1, MARYLAND

DEPARTMENT OF PUBLIC UTILITIES DIVISION OF WATER AND HEAT CLEVELAND, OHIO		2ND. HIGH SERVICE ZONE	
APPROVED _____ 19____		SUBJECT 24" Water Main Relocation in Pearl Rd.	
DIRECTOR OF PUBLIC UTILITIES		COMMISSIONER OF WATER AND HEAT	
COMMISSIONER-DIVISION OF UTILITIES		ENGINEERING	
ENGINEER OF CONSTRUCTION & SURVEYS		DRAWN BY J.H.	
ENGINEER OF DESIGN		TRACED BY M.W.	
		CHECKED BY _____	
		SCALE 1" = 20' H. & V.	
		DATE _____	