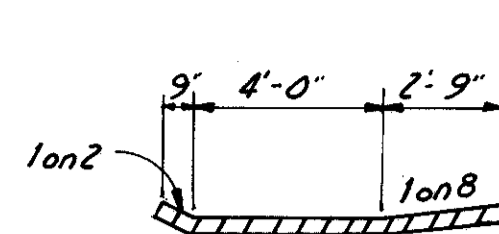


FED. RD. DIVISION	STATE	PROJECT
2	OHIO	

260
646

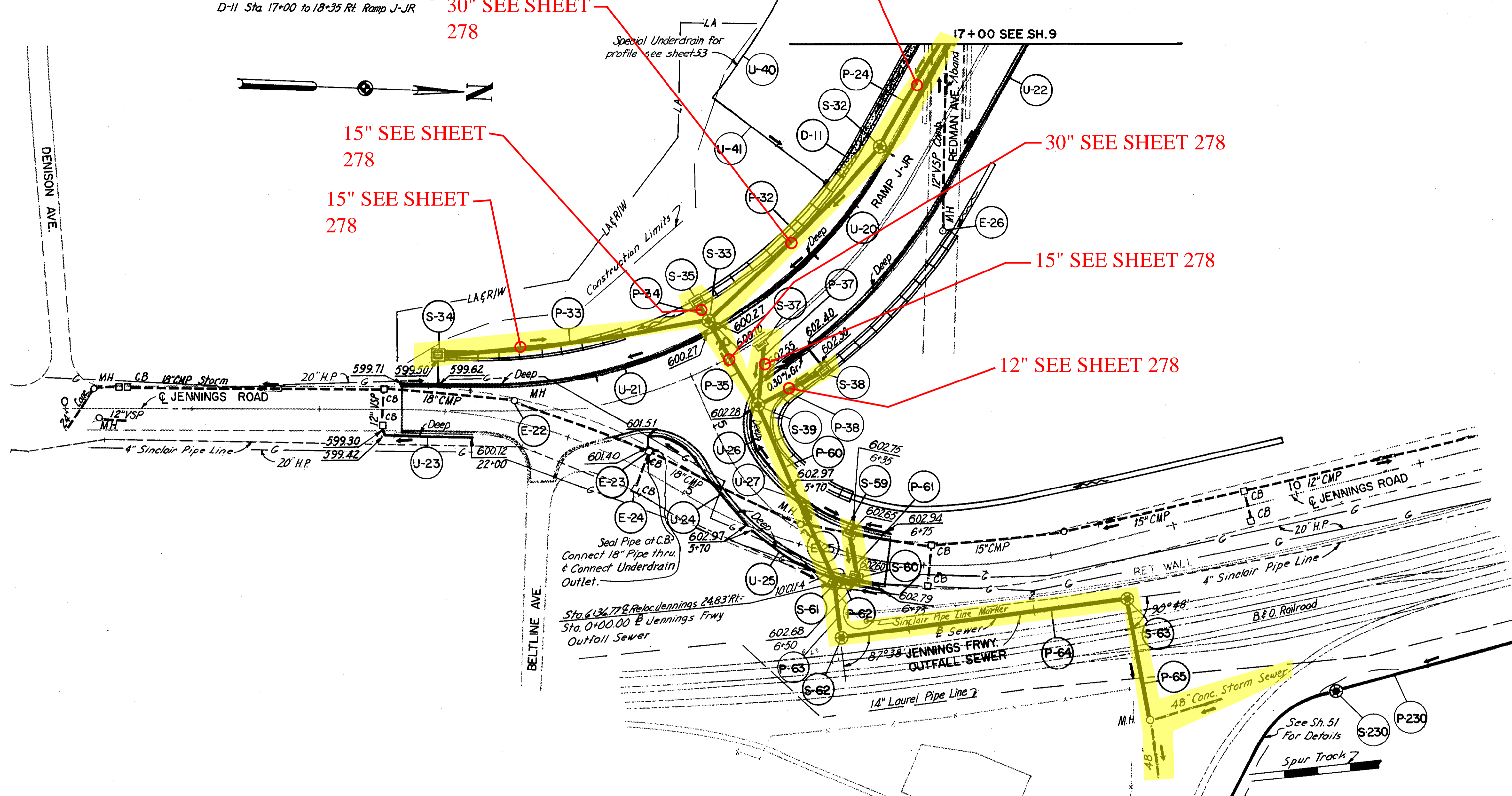
CUYAHOGA COUNTY
CUY - 71-17.83
CUY-176-12.76

10
54



SECTION OF SODDED DITCH D-11
D-11 Sta 17+00 to 18+35 Rt. Ramp J-JR

M.H. ADJUSTED TO GRADE		
Ref. No.	Existing TIC Elev.	Adjusted TIC Elev.
E-22	605.65	604.13
E-25	607.83	608.99



DRAINAGE LEGEND

- ⊙ PROPOSED STORM SEWER MANHOLE
- ⊙ PROPOSED SANITARY MANHOLE
- PROPOSED PAVED SHOULDER INLET
- ▣ PROPOSED DITCH CATCH BASIN
- ▣ PROPOSED PAVEMENT CATCH BASIN
- PROPOSED STORM OR SANITARY SEWER
- EXISTING MANHOLE
- EXISTING CATCH BASIN
- EXISTING STORM OR SANITARY SEWER
- ▨ JUTE MATTING
- ▨ SODDED DITCH

DRAINAGE QUANTITIES

CODE	LOCATION	I-16		I-8	L-10
		M.H. Aband.	C.B. Aband.	M.H. Adjusted to Grade	Sodding
EXISTING STRUCTURES		Each			Sq. Yd.
E-22	Jennings Rd.			1	
E-23	Jennings Rd.		1		
E-24	Jennings Rd.		1		
E-25	Jennings Rd.			1	
E-26	Redman Ave.	1			
DITCH PROTECTION					
D-11	Ramp J-JR Rt.				113
TOTAL		1	2	2	113

E-24 Seal Pipe at C.B.
E-23 Connect 18" Pipe through C.B.

DRAINAGE QUANTITIES

CODE	LOCATION	I-1				I-5			
		CI F-4	CI I-3 Deep	CI I-3 MG.4(h)	CI F-4 MG.4(c)	CI F-4 25° Bend	CI F-4 90° Bend	CI I-3 60° Bend	CI I-3 90° Bend Tee
UNDERDRAINS		6"	6"	6"	8"	6"	6"	6"	6"x6"x6"
		Lin. Ft.				Each			
U-20	Ramp J-JR Rt. 17+00 to 20+00	10	290				1		
U-21	Ramp J-JR Rt. 20+04 to 22+55	10	265						1
U-22	Ramp J-JR Lt. 16+70 to 19+85	10	352						1
U-23	Ramp J-JR Lt. 22+00 to 22+70	8	64				1		
U-24	Rel Jennings Rd. Rt. 20+95 J-JR to 5+70	10	115					1	
U-25	Rel Jennings Rd. Rt. 5+70 to 6+75	14	110						1
U-26	Rel Jennings Rd. Lt. 20+00 J-JR to 5+70	10	65						
U-27	Rel Jennings Rd. Lt. 5+70 to 6+75	4	90						1
U-40	Ramp J-JR Rt. 17+00 to 18+50			131					
U-41	Ramp J-JR Rt. 18+50	116			10	1	1		
TOTAL		192	1351	131	10	1	2	1	4

SCALE 1"=50'
HOWARD, NEEDLES, TAMMEN & BERGENDOFF
MADE D.D.S. DATE 8-14-64 CONSULTING ENGINEERS
TRCD R.D.L. DATE 8-17-64 KANSAS CITY CLEVELAND NEW YORK
CKD R.J.T. DATE 10-18-64

