

old CFN 283221333
 new CFN 1821327
 SLM 13.33, 12" VCP
 SEE SHEET 4

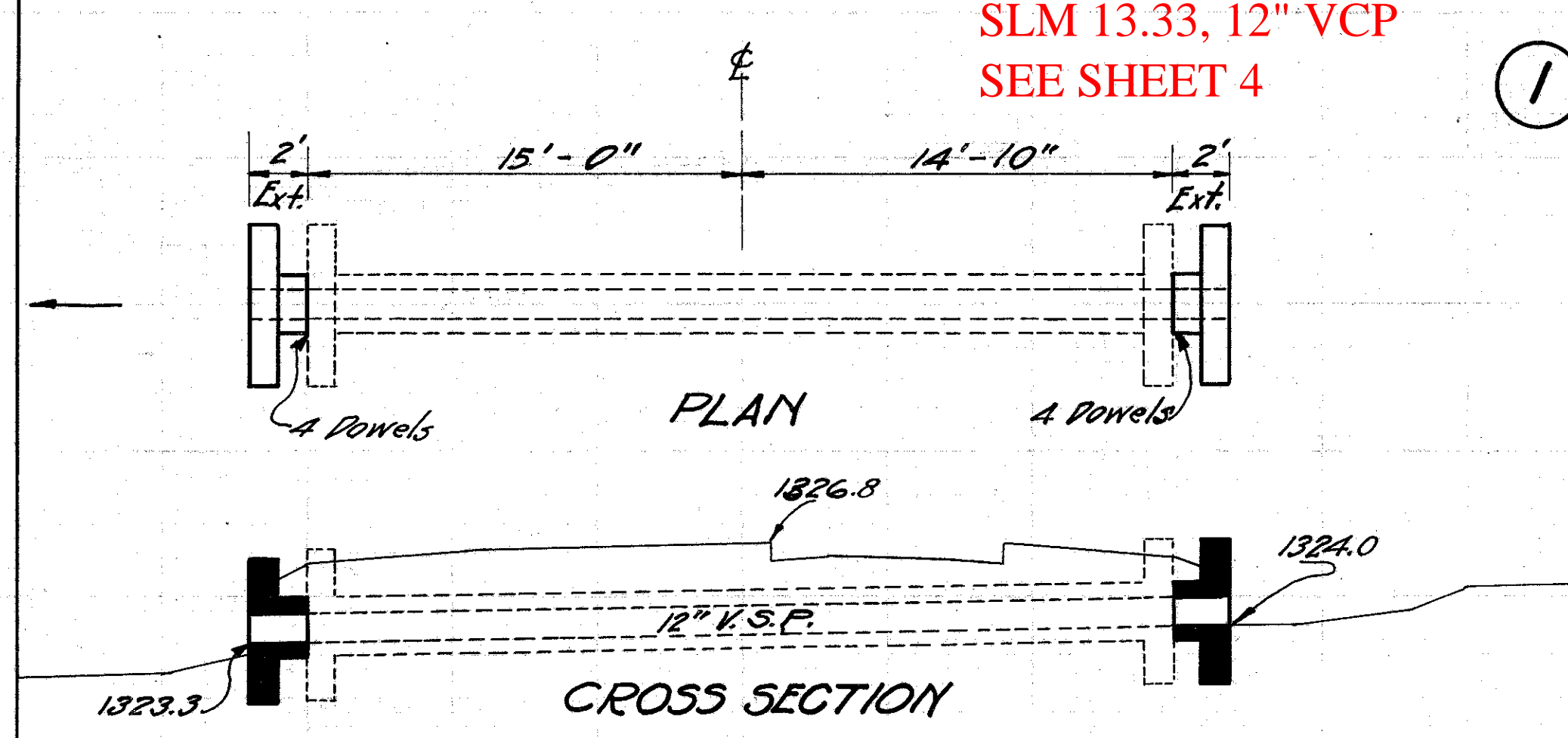
old CFN 283221369
 new CFN 1821324
 SLM 13.69, 12" VCP
 SEE SHEET 4

old CFN 283221393
 new CFN 1814187
 SLM 13.93, 12" VCP
 SEE SHEET 4

FED. AID DIST. NO.	STATE	FED. AID PROJECT YEAR	FISCAL YEAR
10	OHIO	489-C	1929

26
31

S.H. (I.C.H.) 15 SEC. J. K.
 GEAUGA COUNTY.

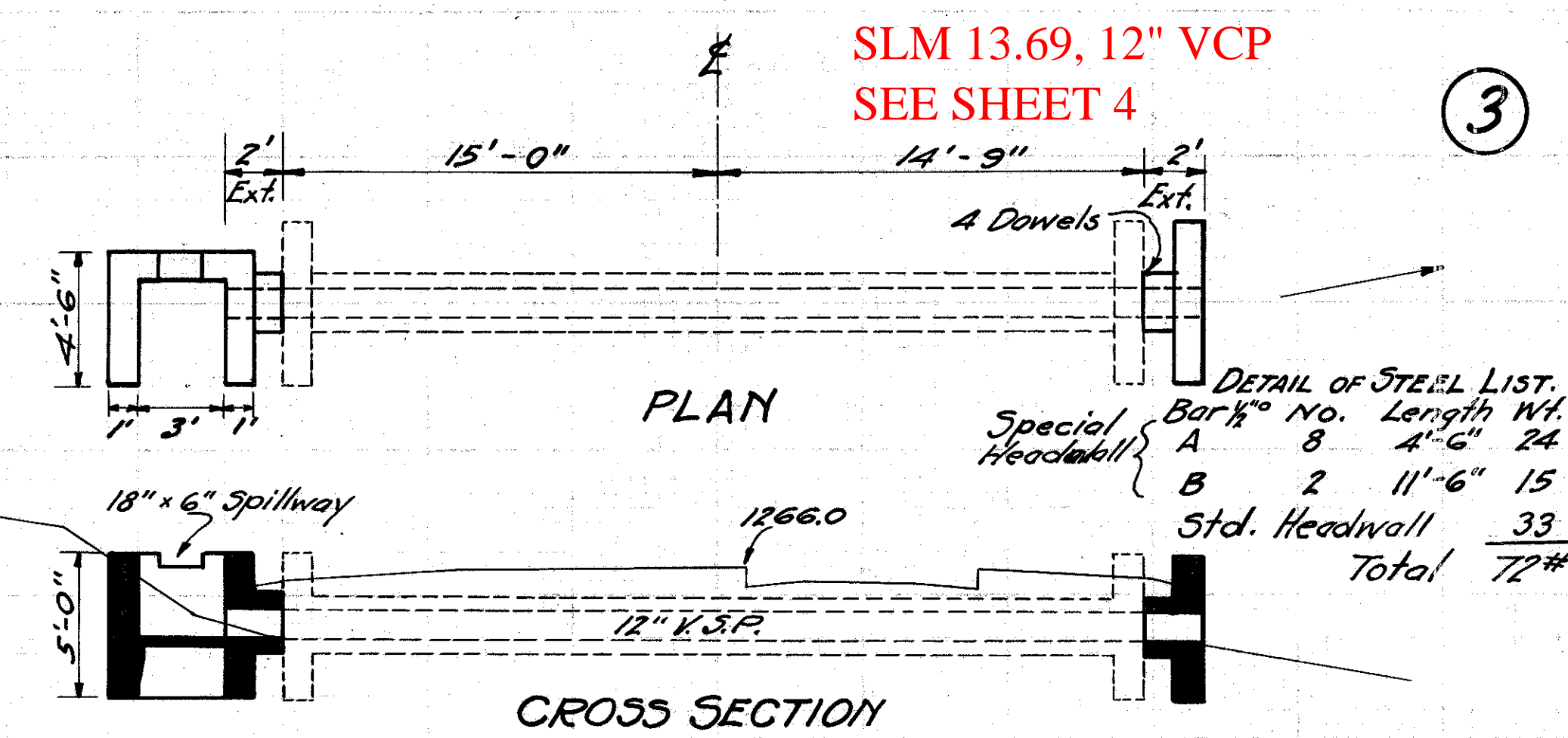


CULVERT DATA
 Type V.S.P. Culv't. Dr. #300.
 Size 12"
 Work Reg'd. Remove existing parapets.
 Build 2' Ext. Rt. & 2' Ext. Lt.
 with Std. 12" V.S.P. Culv't.

EST. QUANTITIES
 Excav. 3 Cu. Yds.
 Conc. 1-5/2 2.0 Cu. Yds.
 Conc. 1-8 .2 Cu. Yds.
 Reinf. Steel 65 Lbs.
 12" V.S.P. 4 Lin. ft.
 Dowels 8 Complete
 Parapets 2 Removed

Drawn by G.R.H. 5-8-29 Div. Engr. D.W.L.
 Checked by Date 5/21/29

STA. 558+90.

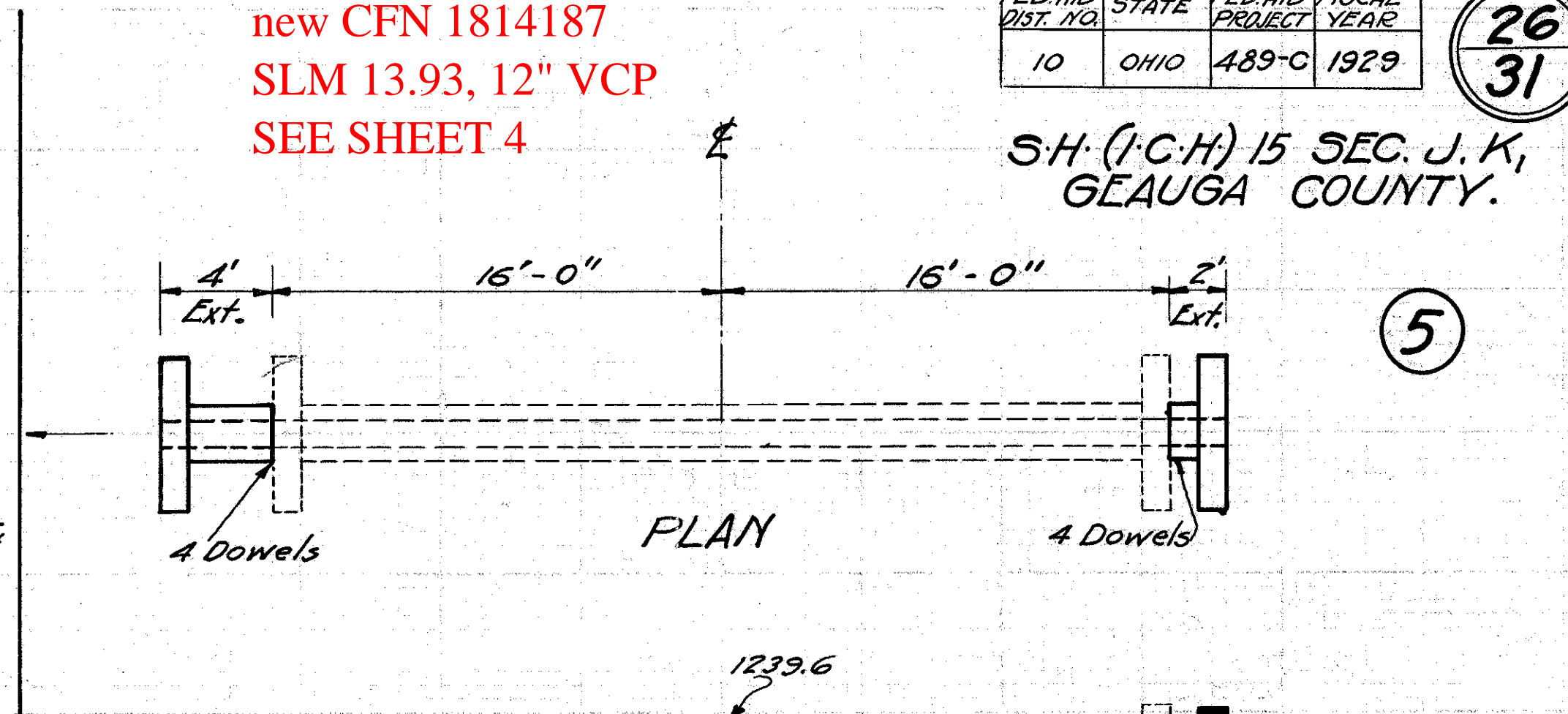


CULVERT DATA
 Type V.S.P. Culv't. Dr. #300.
 Size 12"
 Work Reg'd. Remove existing parapets.
 Build 2' Ext. with Std 12" V.S.P. and
 Std. Hdwl. and 2' Ext. Lt. with
 Special Hillside Hdwl.

EST. QUANTITIES
 Excav. 8 Cu. Yds.
 Conc. 1-5/2 3.2 Cu. Yds.
 Conc. 1-8 .2 Cu. Yds.
 Reinf. Steel 72 Lbs.
 12" V.S.P. 4 Lin. ft.
 4" Paving 1.2 Sq. Yds.
 Dowels 4 Complete
 Parapets 2 Removed

Drawn by G.R.H. 5-8-29 Div. Engr. D.W.L.
 Checked by Date 5/21/29

STA. 577+81.

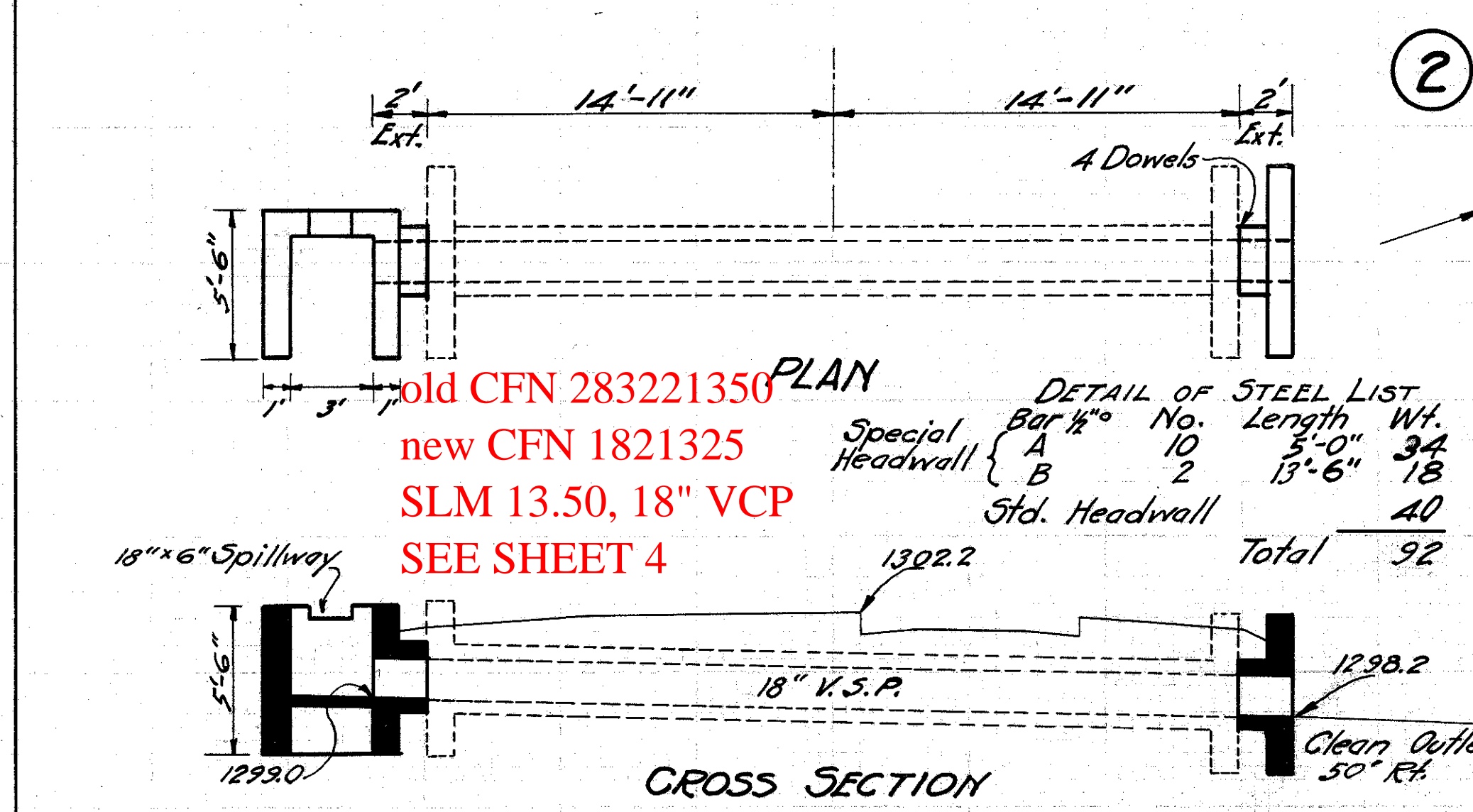


CULVERT DATA
 Type V.S.P. Culv't. Dr. #300
 Size 12"
 Work Reg'd. Remove existing parapets.
 Build 2' Ext. Rt. and 4' Ext. Lt.
 with Std. 12" V.S.P. Culv't.

EST. QUANTITIES
 Excav. 4 Cu. Yds.
 Conc. 1-5/2 2.0 Cu. Yds.
 Conc. 1-8 .4 Cu. Yds.
 Reinf. Steel 65 Lbs.
 12" V.S.P. 6 Lin. ft.
 Dowels 8 Complete
 Parapets 2 Removed

Drawn by G.R.H. 5-8-29 Div. Engr. D.W.L.
 Checked by Date 5/21/29

STA. 590+88.

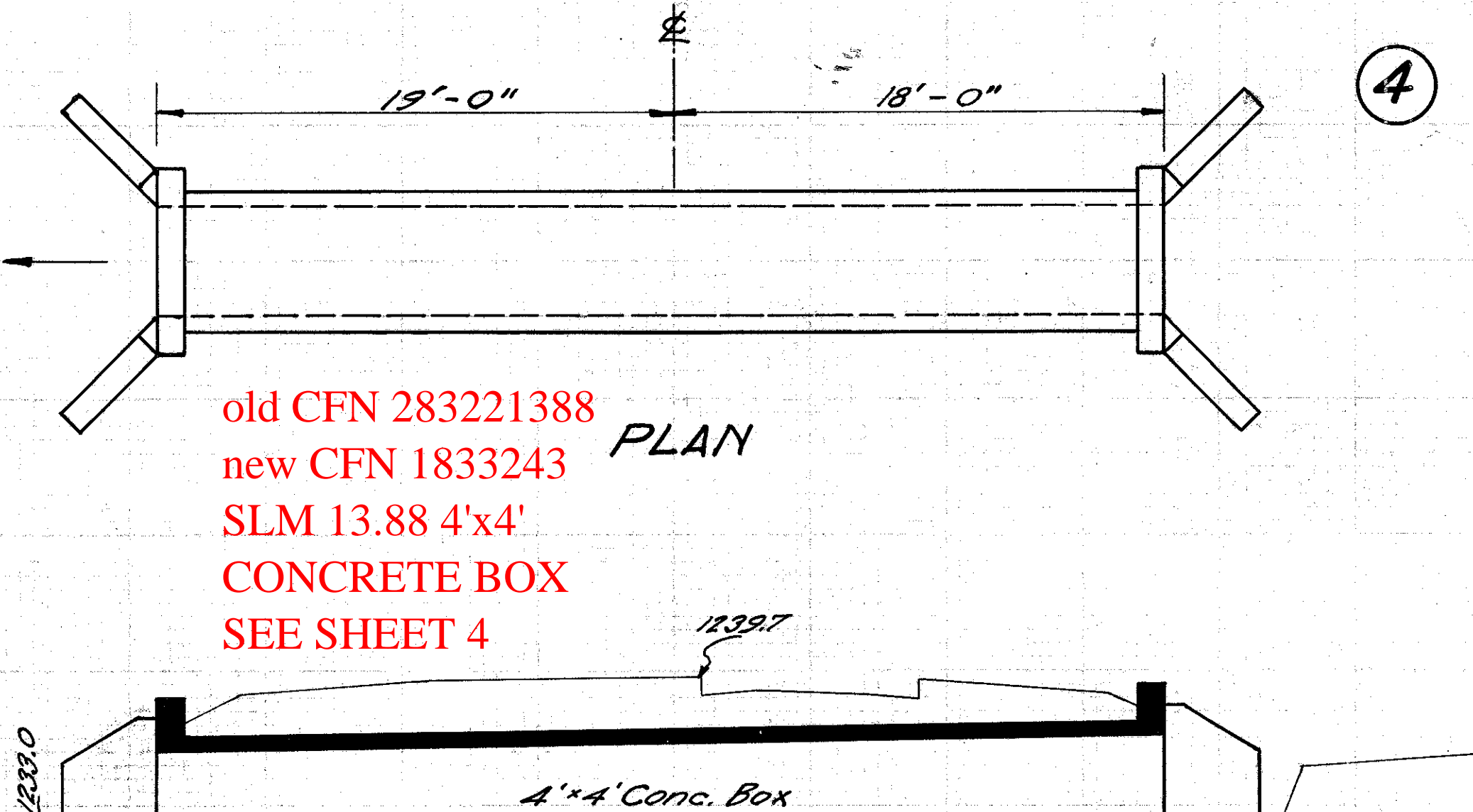


CULVERT DATA
 Type V.S.P. Culv't. Dr. #300
 Size 18"
 Work Reg'd. Remove existing parapets.
 Build 2' Ext. Rt. with Std. headwall
 and 2' Ext. Lt. with special headwall.

EST. QUANTITIES
 Excav. 10 Cu. Yds.
 Conc. 1-5/2 4.1 Cu. Yds.
 Conc. 1-8 0.3 Cu. Yds.
 Reinf. Steel 92 Lbs.
 18" V.S.P. 4 Lin. ft.
 4" Paving 1.5 Sq. Yds.
 Dowels 4 Complete
 Parapets 2 Removed

Drawn by G.R.H. 5-8-29 Div. Engr. D.W.L.
 Checked by Date 5/21/29

STA. 568+52.

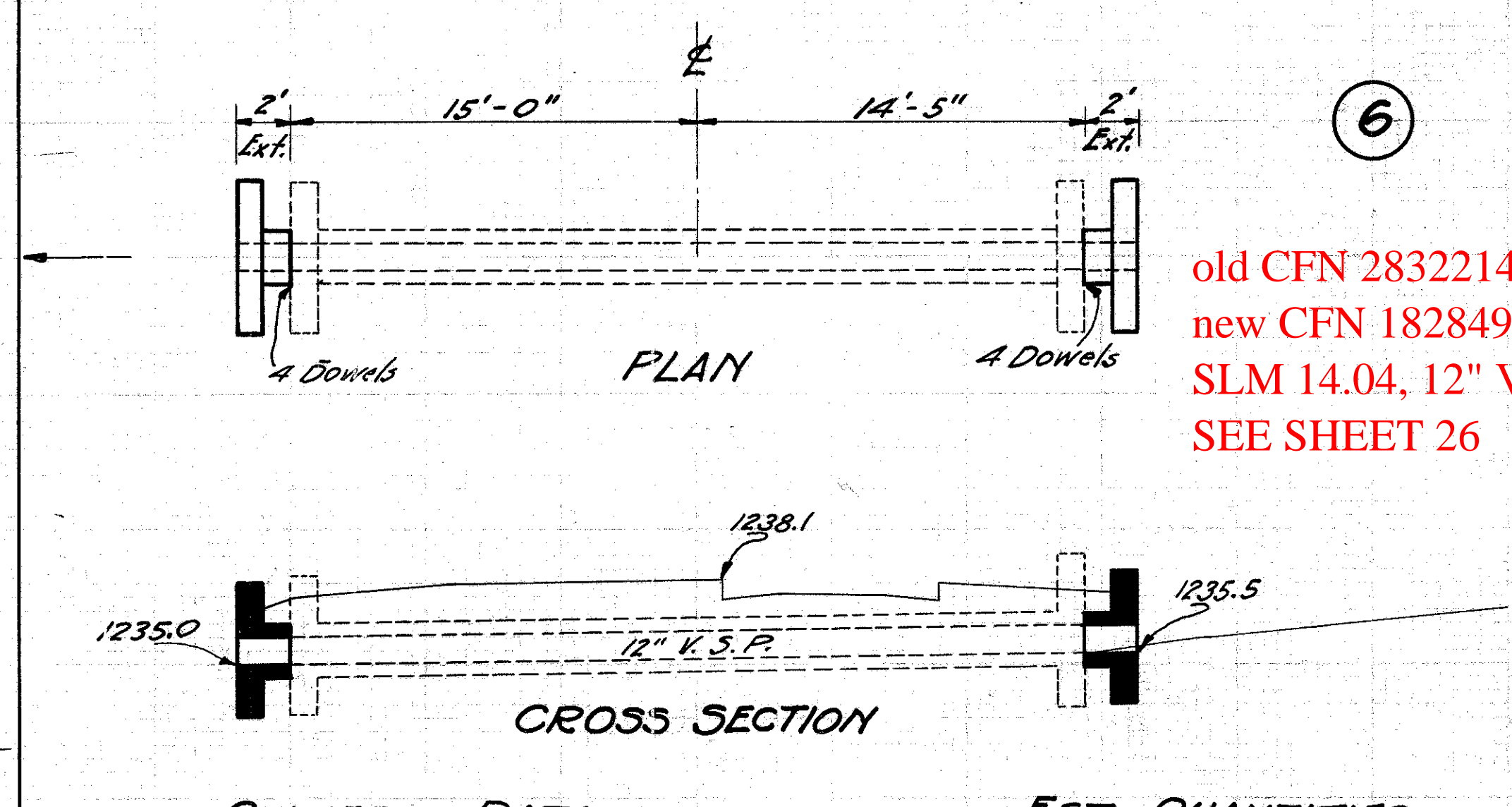


CULVERT DATA
 Type Std. Conc. Box Culv't. #301. Dr.
 Size 4'x4'x37'
 Work Reg'd. Remove existing 2 1/2'x4'x27'
 Stone and Conc. Box. Build new
 Std. 4'x4'x37' Conc. Box Culv't.

EST. QUANTITIES
 Excav. 50 Cu. Yds.
 Conc. 1-5/2 24.5 Cu. Yds.
 Reinf. Steel 1089 Lbs.

Drawn by G.R.H. 5-8-29 Div. Engr. D.W.L.
 Checked by Date 5/21/29

STA. 588+03.



CULVERT DATA
 Type V.S.P. Culv't. Dr. #300
 Size 12"
 Work Reg'd. Remove existing parapets.
 Build 2' Ext. Rt. and 2' Ext. Lt.
 with Std. 12" V.S.P. Culv't.

EST. QUANTITIES
 Excav. 3 Cu. Yds.
 Conc. 1-5/2 2.0 Cu. Yds.
 Conc. 1-8 .2 Cu. Yds.
 Reinf. Steel 65 Lbs.
 12" V.S.P. 4 Lin. ft.
 Dowels 8 Complete
 Parapets 2 Removed

Drawn by G.R.H. 5-8-29 Div. Engr. D.W.L.
 Checked by Date 5/21/29

STA. 596+72.

old CFN 283221404
 new CFN 1828498
 SLM 14.04, 12" VCP
 SEE SHEET 26