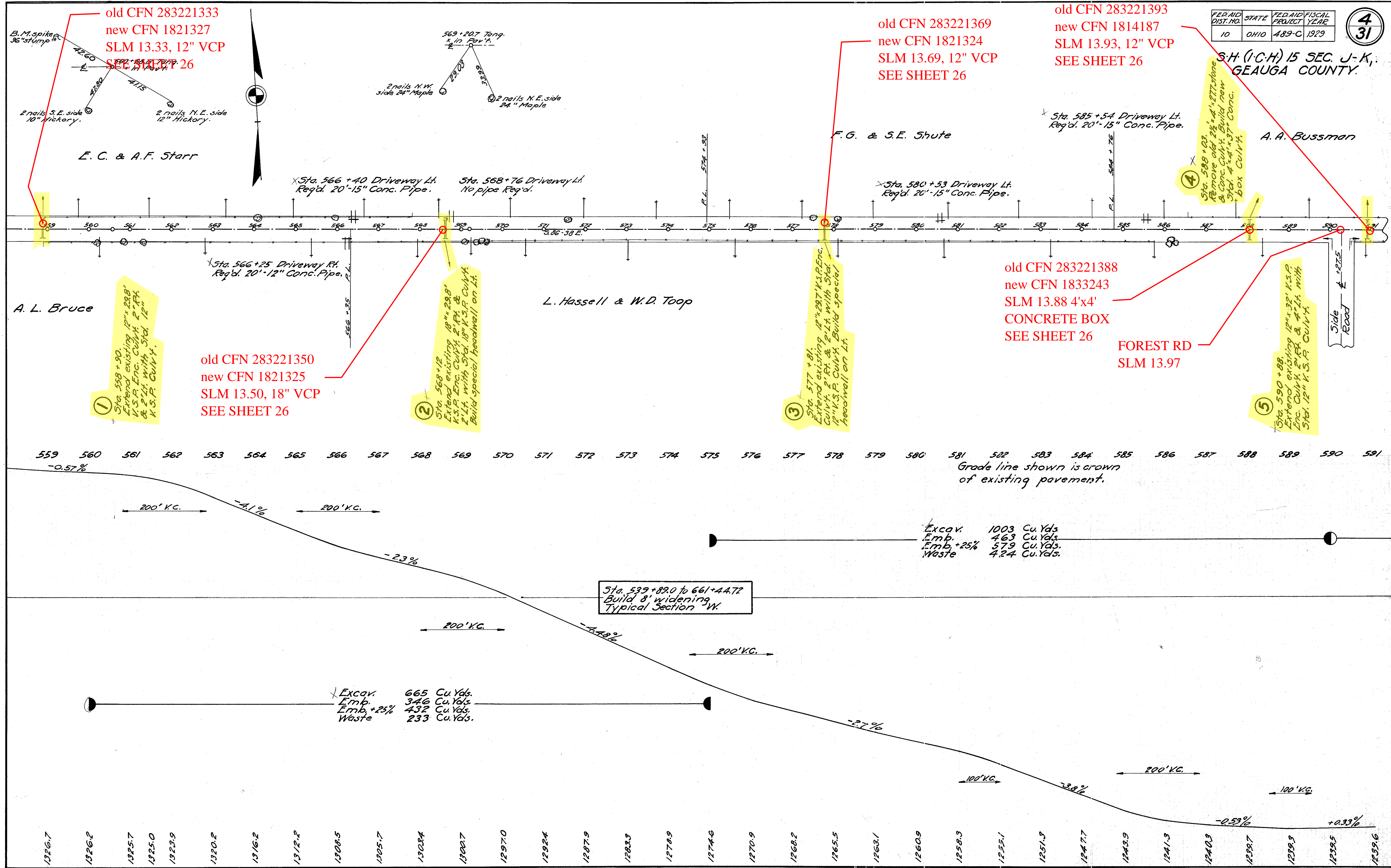


FED AID DIST. NO.	STATE	FED AID PROJECT	FISCAL YEAR
10	OHIO	489-C	1929

4
31

SH (I.C.H) 15 SEC. J-K,
GEAUGA COUNTY.



old CFN 283221333
new CFN 1821327
SLM 13.33, 12" VCP
SEE SHEET 26

old CFN 283221369
new CFN 1821324
SLM 13.69, 12" VCP
SEE SHEET 26

old CFN 283221393
new CFN 1814187
SLM 13.93, 12" VCP
SEE SHEET 26

old CFN 283221388
new CFN 1833243
SLM 13.88 4'x4'
CONCRETE BOX
SEE SHEET 26

old CFN 283221350
new CFN 1821325
SLM 13.50, 18" VCP
SEE SHEET 26

FOREST RD
SLM 13.97

Excav. 1003 Cu. Yds
Emb. 463 Cu. Yds
Emb. +25% 579 Cu. Yds.
Waste 424 Cu. Yds.

Sta. 539+89.0 to 661+44.72
Build 8' widening
Typical Section W.

Excav. 665 Cu. Yds.
Emb. 346 Cu. Yds.
Emb. +25% 432 Cu. Yds.
Waste 233 Cu. Yds.

1
Sta. 558+90
Extend existing 12" x 29.8'
K.S.P. Enc. Culv. 2' R.H. &
2' L.H. with Std. 12" K.S.P. Culv. 4'

2
Sta. 568+12
Extend existing 18" x 29.8'
K.S.P. Enc. Culv. 2' R.H. &
2' L.H. with Std. 18" K.S.P. Culv. 4'
Build special headwall on Lt.

3
Sta. 577+81
Extend existing 12" x 29.7' K.S.P. Enc. Culv. 2' R.H. & 2' L.H. with Std. 12" K.S.P. Culv. 4' Build special headwall on Lt.

4
Sta. 588+03
Remove old 24" x 4' x 27.1' stone & conc. Culv. 4'. Build new Std. 4' x 4' x 37' conc. box Culv. 4'.

5
Sta. 590+86
Extend existing 12" x 32' K.S.P. Enc. Culv. 2' R.H. & 2' L.H. with Std. 12" K.S.P. Culv. 4'.

2 nails S.E. side 10" Hickory.
2 nails N.E. side 12" Hickory.

569+20.7 Tang x in Pav't.
2 nails N.W. side 24" Maple
2 nails N.E. side 24" Maple

Sta. 566+40 Driveway Lt. Reg'd. 20'-15" Conc. Pipe.
Sta. 568+76 Driveway Lt. No pipe Reg'd.

Sta. 580+53 Driveway Lt. Reg'd. 20'-15" Conc. Pipe.

Sta. 585+54 Driveway Lt. Reg'd. 20'-15" Conc. Pipe.

Sta. 566+25 Driveway Rt. Reg'd. 20'-12" Conc. Pipe.

Grade line shown is crown of existing pavement.

Side Road