

Pier #5 - North Tower		
Level	Deficiency	Status
1	Blade-thin horizontal stiffeners with 2"+ perforations	N.G.
2	Thinning horizontal stiffeners with width loss	OK
3	Thinning horizontal stiffeners with width loss	OK
4	Thinning horizontal stiffeners with width loss	OK
5	Thinning horizontal stiffeners with width loss	OK
6	Thinning horizontal stiffeners with width loss	OK
7	Thinning horizontal stiffeners with width loss	OK
8	Surface rust on all horizontals and diagonals	OK
9	Surface rust on all horizontals and diagonals	OK
10	Surface rust on all horizontals and diagonals	OK
11	Surface rust on all horizontals and diagonals	OK
12	Surface rust on all horizontals and diagonals	OK
13	Surface rust on all horizontals and diagonals	OK
14	Surface rust on all horizontals and diagonals	OK
15	Surface rust on all horizontals and diagonals	OK
16	Surface rust on all horizontals and diagonals	OK
17	Surface rust on all horizontals and diagonals	OK
Cap	Blade-thin angle stiffeners	N.G.
Cap	Leaking expansion joint	N.G.

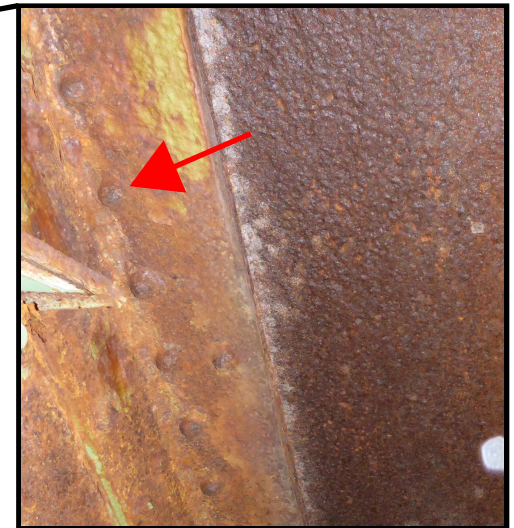
*Levels are numbered from the bottom up with Level 1 being the 1st Level above the concrete base*





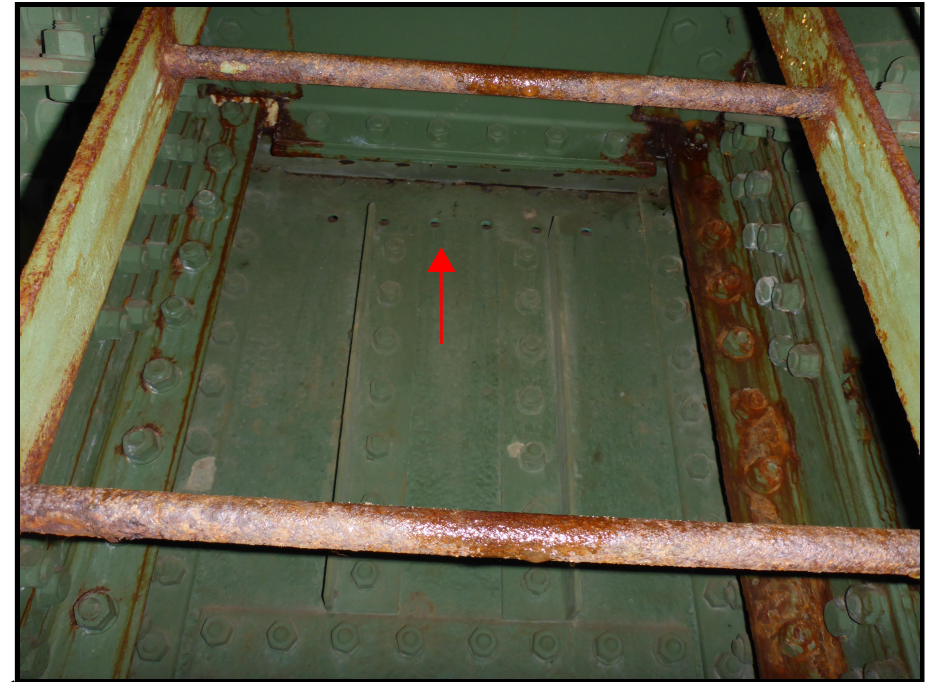
Pier #5 - South Tower		
Level	Deficiency	Status
1	Ponding water; surface rust on all horizontals and diagonals	OK
2	Surface rust on all horizontals and diagonals	OK
3	Surface rust, minor perforation on horizontal angle	OK
4	Surface rust on all horizontals and diagonals	OK
5	Surface rust on all horizontals and diagonals	OK
6	Surface rust on all horizontals and diagonals; 2 missing bolts on South face plate	OK
7	Surface rust on all horizontals and diagonals	OK
8	Pack rust forcing built up horizontal and diagonal members 1" apart	N.G.
9	Pack rust forcing built up horizontal and diagonal members 1" apart	N.G.
10	Pack rust forcing built up vertical stiffeners 1" apart	N.G.
11	South face plate severely corroded rivet heads	N.G.
12	Section loss on diagonal angle leg, thin and bent	N.G.
13	Surface rust on all horizontals and diagonals	OK
14	Surface rust on all horizontals and diagonals	OK
15	Surface rust on all horizontals and diagonals	OK
16	Surface rust on all horizontals and diagonals	OK
17	Surface rust on all horizontals and diagonals	OK
Cap	Blade-thin angle stiffeners with 2"+ perforations	N.G.
Cap	Leaking expansion joint	N.G.

Levels are numbered from the bottom up with Level 1 being the 1st Level above the concrete base



Pier #6 - North Tower		
Level	Deficiency	Status
1	Misdrilled holes on connection plates; minor section loss	OK
2	Thinning horizontal stiffeners with width loss	OK
3	Thinning horizontal stiffeners with width loss	OK
4	Thinning horizontal stiffeners with width loss	OK
5	Thinning horizontal stiffeners with width loss	OK
6	North face plate thinning with pin holes and missing bolts; Thinning horizontal stiffeners with width loss	OK
7	North face plate thinning with pin holes	OK
8	Surface rust on all horizontals and diagonals	OK
9	Surface rust on all horizontals and diagonals	OK
10	Surface rust on all horizontals and diagonals	OK
11	Surface rust on all horizontals and diagonals	OK
12	Thinning south vertical stiffener	OK
13	Surface rust on all horizontals and diagonals	OK
14	Surface rust on all horizontals and diagonals	OK
15	Surface rust on all horizontals and diagonals	OK
16	Surface rust on all horizontals and diagonals	OK
17	Surface rust on all horizontals and diagonals	OK
18	6 holes missing rivets	N.G.
Cap	Ponding water, leaking expansion joint; thinning stiffeners	N.G.
Cap	Leaking expansion joint	N.G.

Levels are numbered from the bottom up with Level 1 being the 1st Level above the concrete base





Pier #6 - South Tower		
Level	Deficiency	Status
1	Surface rust on all horizontals and diagonals	OK
2	Surface rust on all horizontals and diagonals	OK
3	Surface rust on all horizontals and diagonals	OK
4	Surface rust on all horizontals and diagonals	OK
5	1/16" section loss of both diagonal braces	OK
6	1/16" section loss of both diagonal braces	OK
7	Surface rust on all horizontals and diagonals	OK
8	Surface rust on all horizontals and diagonals	OK
9	Pinholes on south face plate; laminar rust between built up horizontal members	OK
10	2 x 1" diameter corrosion holes in south face plate; Surface rust on all horizontals and diagonals	OK
11	Surface rust on all horizontals and diagonals	OK
12	1/2" diameter corrosion hole in south face plate; Surface rust on all horizontals and diagonals	OK
13	Surface rust on all horizontals and diagonals	OK
14	Surface rust on all horizontals and diagonals	OK
15	Surface rust on all horizontals and diagonals	OK
16	Surface rust on all horizontals and diagonals	OK
17	Surface rust on all horizontals and diagonals	OK
18	Surface rust on all horizontals and diagonals	OK
Cap	Leaking expansion joint	N.G.



*Levels are numbered from the bottom up with Level 1 being the 1st Level above the concrete base*



Pier #7 - North Tower		
Level	Deficiency	Status
1	Piles of rust in the base of the tower; severe thinning angles	N.G.
2	Severe thinning and section loss on all braces	N.G.
3	Severe thinning and section loss on all braces	N.G.
4	Severe thinning and section loss on all braces	N.G.
5	Severe thinning and section loss on all braces	N.G.
6	Severe thinning and section loss on all braces	N.G.
7	Severe thinning and section loss on all braces	N.G.
8	Severe thinning diagonal and horizontal braces; mid pier strut floor very thin	N.G.
9	<i>--inspection stopped at level 8 due to deterioration--</i>	
10		
11		
12		
13		
14		
15		
16		
17		
Cap		

*Levels are numbered from the bottom up with Level 1 being the 1st Level above the concrete base*





Additional Pier #7 North Tower photos



Extent of rust, looking down at Level 8



Close-up of section loss, diagonal Level 7



Extent of rust, looking up at Level 2



Depth of accumulated rust from above, Level 2



Pier #7 - South Tower		
Level	Deficiency	Status
1	Surface rust on all horizontals and diagonals	OK
2	Surface rust on all horizontals and diagonals	OK
3	Surface rust on all horizontals and diagonals	OK
4	Surface rust on all horizontals and diagonals	OK
5	Blade-thin horizontal channel stiffeners	OK
6	Blade-thin horizontal channel stiffeners	OK
7	Blade-thin horizontal channel stiffeners	OK
8	Blade-thin built-up diagonal braces with 1"+ perforation	N.G.
9	Surface rust on all horizontals and diagonals	OK
10	Surface rust on all horizontals and diagonals	OK
11	Surface rust on all horizontals and diagonals	OK
12	Surface rust on all horizontals and diagonals	OK
13	Thinning horizontal stiffeners with width loss	OK
14	Minor pack rust in NW corner connection	OK
15	Surface rust on all horizontals and diagonals	OK
16	Surface rust on all horizontals and diagonals	OK
17	Surface rust on all horizontals and diagonals	OK
Cap	Surface rust on all horizontals and diagonals	OK
Cap	Leaking expansion joint	N.G.

Levels are numbered from the bottom up with Level 1 being the 1st Level above the concrete base



Support angle for below section loss

