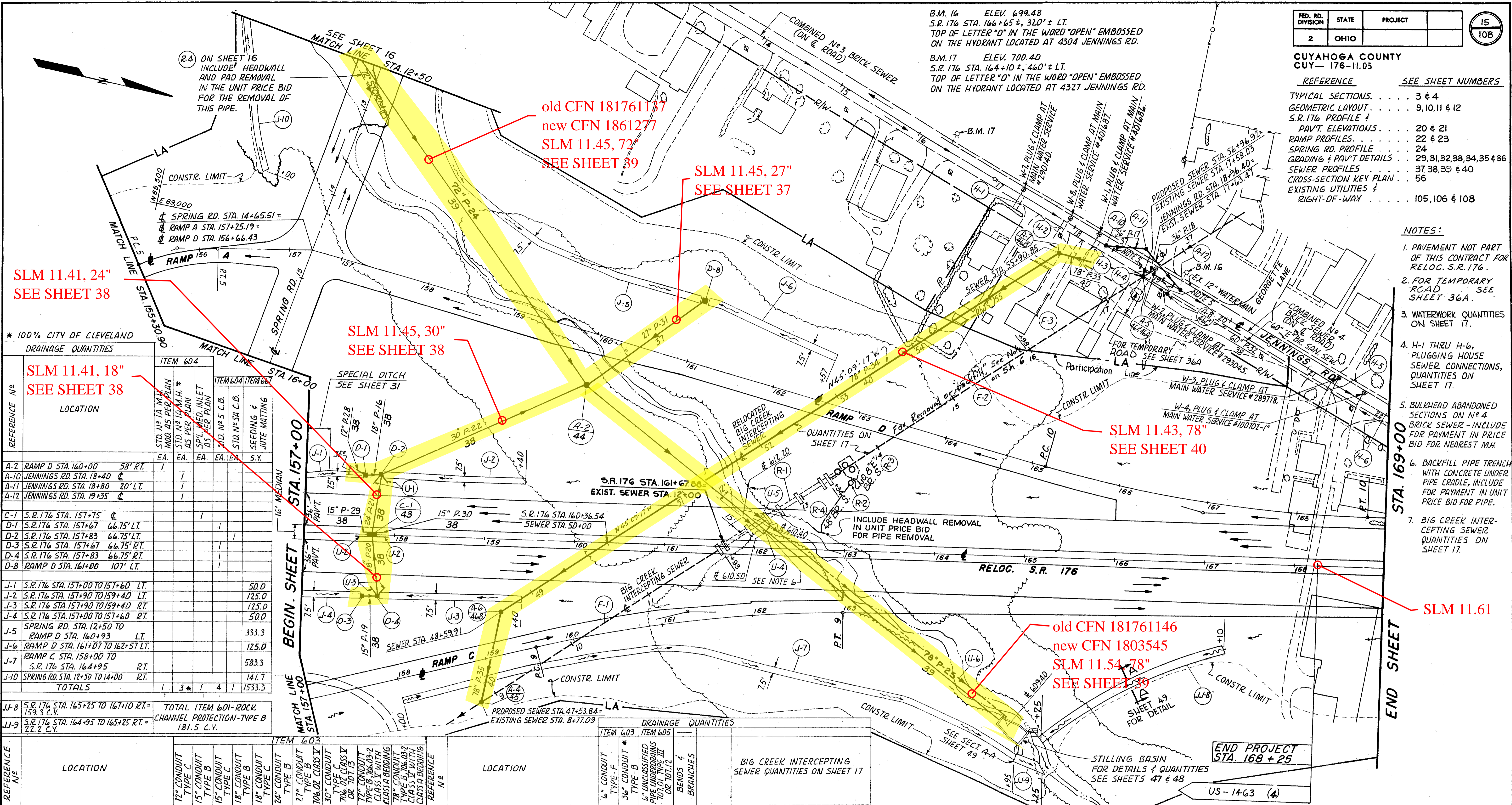


CUYAHOGA COUNTY
CUY-176-11.05

REFERENCE SEE SHEET NUMBERS

TYPICAL SECTIONS 3 & 4
 GEOMETRIC LAYOUT 9, 10, 11 & 12
 S.R. 176 PROFILE & PAVT. ELEVATIONS 20 & 21
 RAMP PROFILES 22 & 23
 SPRING RD. PROFILE 24
 GRADING & PAVT. DETAILS 29, 31, 32, 33, 34, 35 & 36
 SEWER PROFILES 37, 38, 39 & 40
 CROSS-SECTION KEY PLAN 56
 EXISTING UTILITIES & RIGHT-OF-WAY 105, 106 & 108

- NOTES:
- PAVEMENT NOT PART OF THIS CONTRACT FOR RELOC. S.R. 176.
 - FOR TEMPORARY ROAD SEE SHEET 36A.
 - WATERWORK QUANTITIES ON SHEET 17.
 - H-1 THRU H-6, PLUGGING HOUSE SEWER CONNECTIONS, QUANTITIES ON SHEET 17.
 - BULKHEAD ABANDONED SECTIONS ON #4 BRICK SEWER - INCLUDE FOR PAYMENT IN PRICE BID FOR NEAREST M.H.
 - BACKFILL PIPE TRENCH WITH CONCRETE UNDER PIPE CRADLE, INCLUDE FOR PAYMENT IN UNIT PRICE BID FOR PIPE.
 - BIG CREEK INTERCEPTING SEWER QUANTITIES ON SHEET 17.



* 100% CITY OF CLEVELAND DRAINAGE QUANTITIES

REFERENCE N ^o	LOCATION	ITEM 604	ITEM 604 (ITEM 607)
		STD. N ^o 1A M.H. MOD. AS PER PLAN	ITEM 604 (ITEM 607)
		EA.	EA.
A-2	RAMP D STA. 160+00	58° RT.	
A-10	JENNINGS RD. STA. 18+40		
A-11	JENNINGS RD. STA. 18+80	20° LT.	
A-12	JENNINGS RD. STA. 19+35		
C-1	S.R. 176 STA. 157+75		
D-1	S.R. 176 STA. 157+67	66.75° LT.	
D-2	S.R. 176 STA. 157+83	66.75° LT.	
D-3	S.R. 176 STA. 157+67	66.75° RT.	
D-4	S.R. 176 STA. 157+83	66.75° RT.	
D-8	RAMP D STA. 161+00	107° LT.	
J-1	S.R. 176 STA. 157+00 TO 157+60	LT.	50.0
J-2	S.R. 176 STA. 157+90 TO 159+40	LT.	125.0
J-3	S.R. 176 STA. 157+90 TO 159+40	RT.	125.0
J-4	S.R. 176 STA. 157+00 TO 157+60	RT.	50.0
J-5	SPRING RD. STA. 12+50 TO RAMP D STA. 160+93	LT.	333.3
J-6	RAMP D STA. 161+07 TO 162+57	LT.	125.0
J-7	RAMP C STA. 158+00 TO S.R. 176 STA. 164+95	RT.	583.3
J-10	SPRING RD. STA. 12+50 TO 14+00	RT.	141.7
TOTALS			1533.3

REFERENCE N ^o	LOCATION	ITEM 603	ITEM 605
		12" CONDUIT TYPE C	ITEM 603
		L.F.	ITEM 605
P-16	S.R. 176 STA. 157+75 ± LT.		
P-19	S.R. 176 STA. 157+75 ± RT.		
P-20	S.R. 176 STA. 157+79 ± RT.	16	
P-21	S.R. 176 STA. 157+79 ± LT.		
P-22	S.R. 176 STA. 159+0 ± LT.		
P-24	RAMP D STA. 159+30 ± LT. & RT.	67	
P-25	S.R. 176 STA. 162+35 ± LT. & RT.		
P-28	S.R. 176 STA. 157+65 ± LT.		
P-29	S.R. 176 STA. 157+73 ± LT.		
P-30	S.R. 176 STA. 157+77 ± LT.		
P-31	RAMP D STA. 160+35 ± LT. & RT.	4	
TOTALS		4	8

REFERENCE N ^o	LOCATION	ITEM 603	ITEM 605
		15" CONDUIT TYPE B	ITEM 603
		L.F.	ITEM 605
U-1	S.R. 176 STA. 157+83 ± LT.		
U-2	S.R. 176 STA. 157+75 ± RT.		
U-3	S.R. 176 STA. 157+83 ± RT.		
U-4	S.R. 176 STA. 162+00 ± LT.		
U-5	S.R. 176 STA. 162+00 ± LT.		
U-6	S.R. 176 STA. 163+50 ± RT.		
TOTALS		412	104

* 100% CITY OF CLEVELAND
 QUANTITIES ROUNDED OFF AND CARRIED TO GENERAL SUMMARY.
 QUANTITIES CALC. BY: ARG JULY-1969
 QUANTITIES CHKD. BY: CDR JULY-1969

TRYGVE HOFF & ASSOCIATES
 ENGINEERS
 1922 EAST 107TH STREET CLEVELAND, OHIO 44106

PLAN
 STA. 157+00 TO STA. 169+00
 &
 SPRING ROAD INTERCHANGE

SCALE 1" = 50' DATE
 DESIGNED DRAWN TRACED CHECKED REVIEWED DATE REVISED
 PAL CEG CDR T.L.L. 12/09/69

CONT. No. 65026 SHEET ACCT. No. 6041

RELOC. S.R. 176