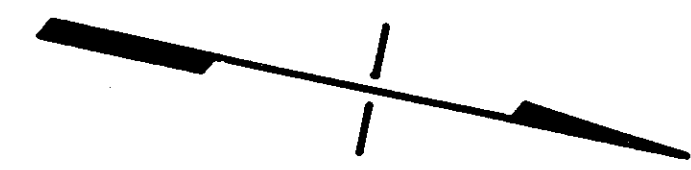


CURVE DATA
 P.I. STA. 213+68.89
 Δ = 34°28'30"
 Dc = 1°01'00"
 R = 5435.65'
 T = 1748.57'
 L = 3390.98'
 Ch = 3340.06'
 E = 265.03'
 M = 253.13'



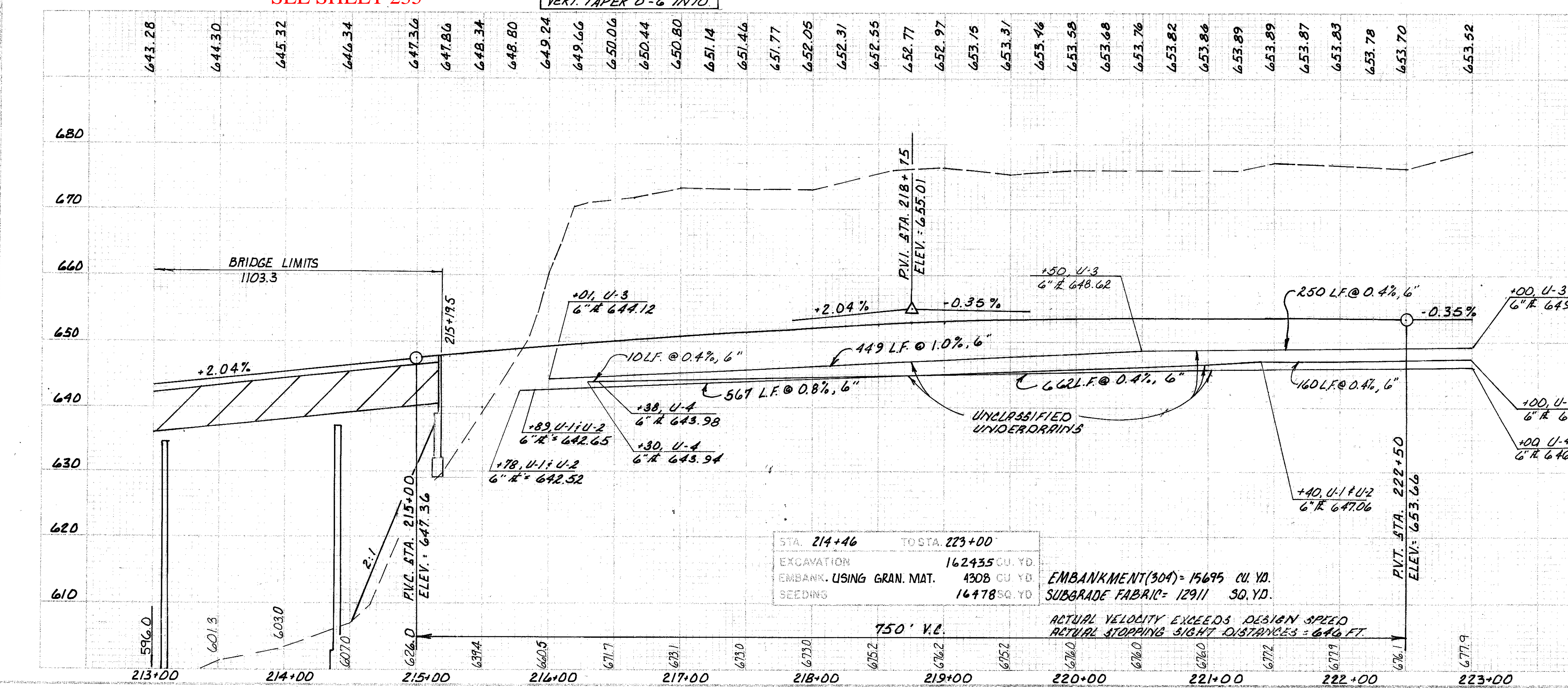
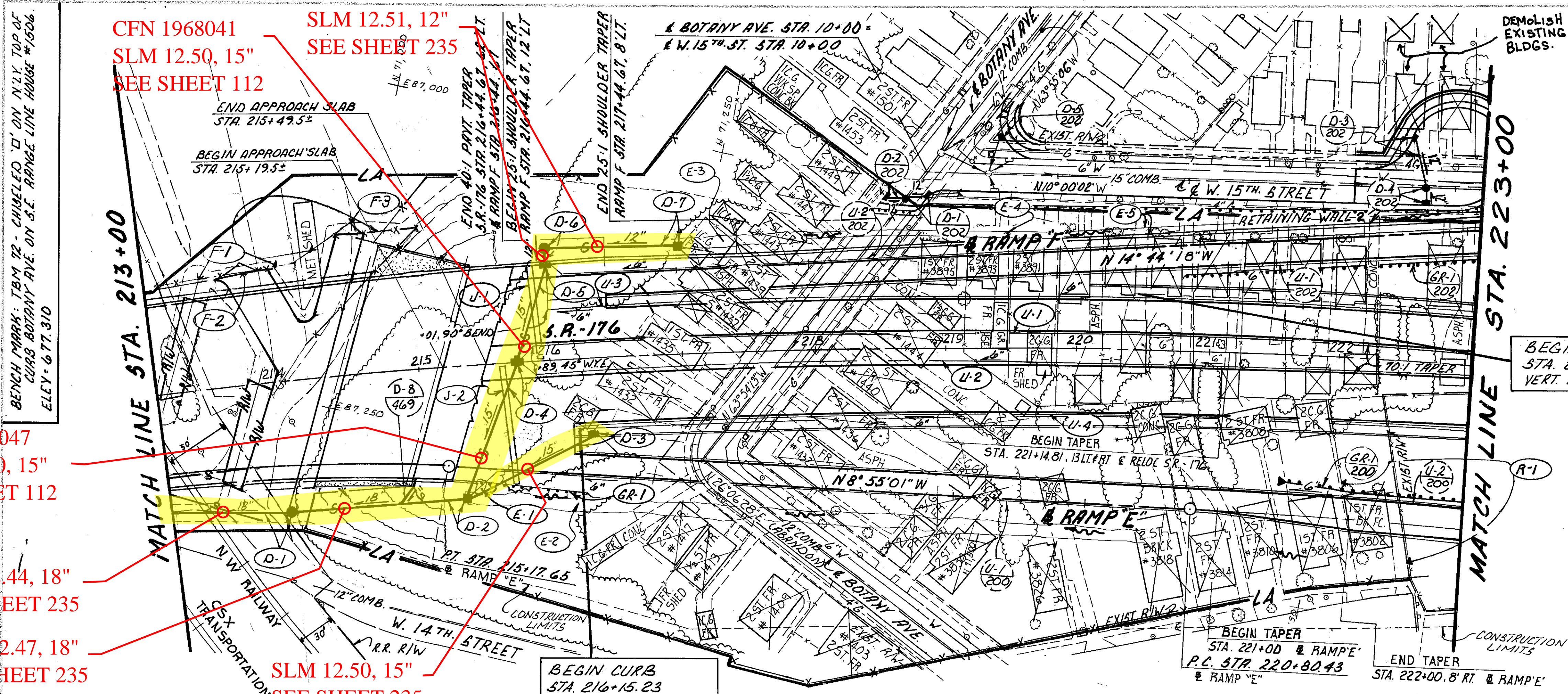
DRAINAGE STRUCTURE DATA

- (D-1) STA 213+95, 100' RT. M.H. N^o. 3, AS PER PLAN T/C - 603.00
- (D-2) STA 215+30, 101' RT. C.B. N^o. 5A, AS PER PLAN, T/C - 644.15
- (D-3) STA 216+30, 59' RT. C.B. CITY OF CLEVELAND N^o. 1, T/C 648.18
- (D-4) STA 215+75, & INLET, N^o. 3, B.50 T/C 648.07
- (D-5) STA 216+00, 72.9' LT. INLET N^o. 3, B.50 AS PER PLAN T/C 649.57
- (D-6) STA 216+00, 84' LT. M.H. N^o. 3, AS PER PLAN T/C - 647.50
- (D-7) STA 217+00, 84' LT. C.B. N^o. 5, AS PER PLAN, T/C - 649.35

REFERENCES

QUANTITIES FOR REFERENCED ITEMS	SHEET NUMBERS
PRELIMINARY DETAILS	222-224
RAMP "E" PLAN & PROFILE	200
RAMP "F" PLAN & PROFILE	202
RETAINING WALL DETAILS	
D-1, D-2 & D-3	235
D-2, D-4, D-5 & D-6	112
D-C & D-7	235
D-8	239 &
BRIDGE DATA	72 & 469
GRADING PLAN	80

- NOTES:**
- (R-1) IS AN ESTIMATE OF ALL FENCE THAT MUST BE REMOVED WITHIN LIMITS OF CONSTRUCTION FROM STA. 213+00 TO STA. 223+00.
 - (F-1) IS TO BE A 10' HIGH CHAIN LINK FENCE WITH THREE (3) STRANDS OF BARBED WIRE ALONG THE TOP EDGE.
 - (F-2) IS TO BE A DOUBLE SWING GATE 10' HIGH AND 36' WIDE WITH THREE (3) STRANDS OF BARBED WIRE ALONG THE TOP EDGE.
 - (F-3) IS TO BE A DOUBLE SWING GATE 10' HIGH AND 24' WIDE WITH THREE (3) STRANDS OF BARBED WIRE ALONG THE TOP EDGE.



BENCH MARK: TBM 72 - CHISELED 'I' ON N.Y. TOP OF CURB BOTANY AVE. ON S.E. CORNER LINE HOUSE #1506. ELEV. = 677.310

CFN 1968047
SLM 12.50, 15"
SEE SHEET 112

SLM 12.44, 18"
SEE SHEET 235

SLM 12.47, 18"
SEE SHEET 235

CFN 1968041
SLM 12.51, 12"
SEE SHEET 235

SLM 12.50, 15"
SEE SHEET 235

RELOC. S.R. - 176