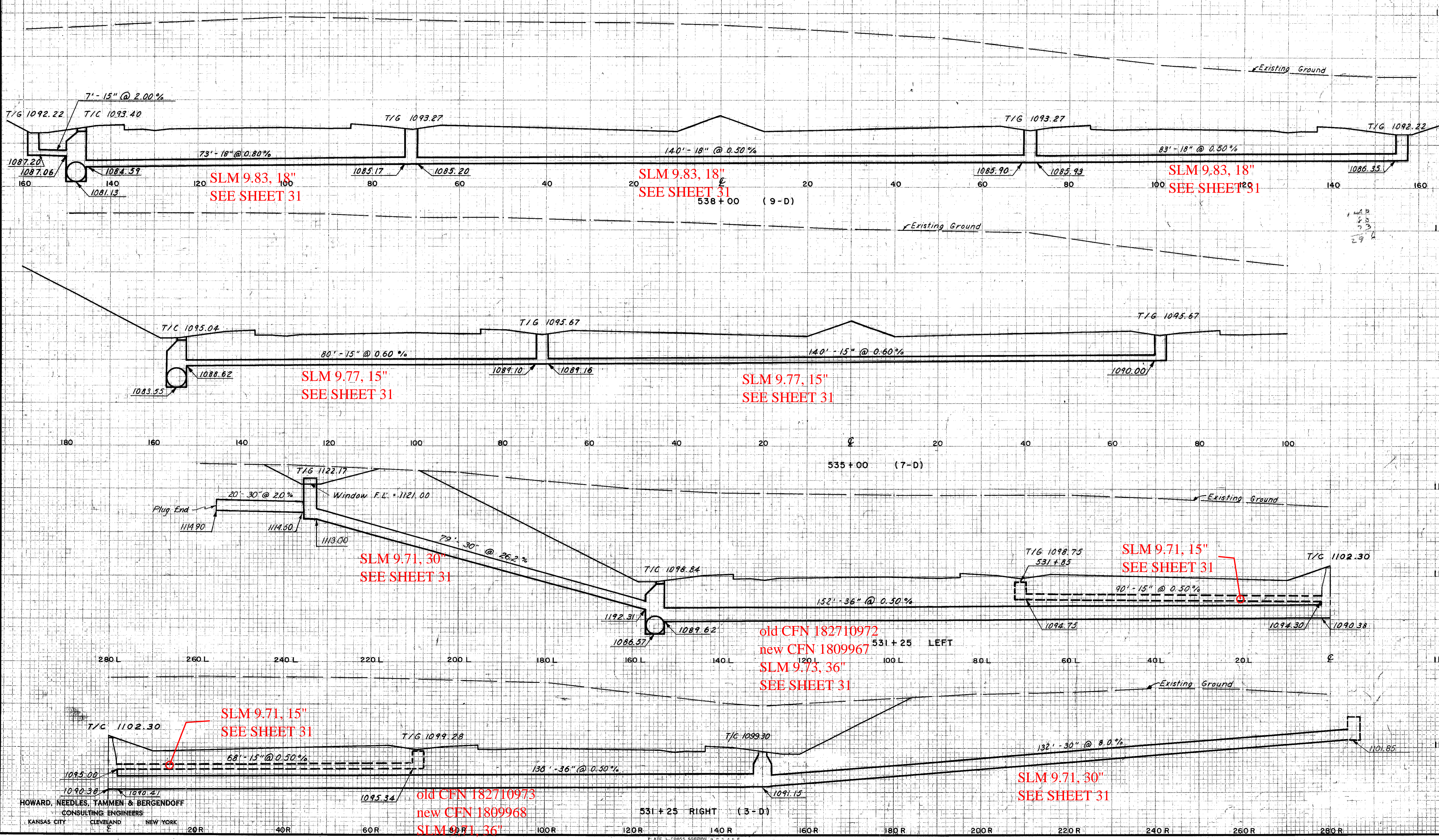


FINAL SURVEY PLOTTED
NOTE BOOK AREAS CHECKED

DATE: 8-22-91
R.C.
H.H.



SLM 9.83, 18"
SEE SHEET 31

SLM 9.83, 18"
SEE SHEET 31

SLM 9.83, 18"
SEE SHEET 31

SLM 9.77, 15"
SEE SHEET 31

SLM 9.77, 15"
SEE SHEET 31

SLM 9.71, 30"
SEE SHEET 31

SLM 9.71, 15"
SEE SHEET 31

old CFN 182710972
new CFN 1809967
SLM 9.73, 36"
SEE SHEET 31

SLM 9.71, 15"
SEE SHEET 31

SLM 9.71, 30"
SEE SHEET 31

old CFN 182710973
new CFN 1809968
SLM 9.71, 36"
SEE SHEET 31

HOWARD, NEEDLES, TAMMEN & BERGENDOFF
CONSULTING ENGINEERS
KANSAS CITY CLEVELAND NEW YORK

531 + 25 RIGHT (3-D)

PLATE 3-CROSS SECTION OF P.R. 2.1.1.1
CHARLES BRIDGES COMPANY, INC.