

SEE 1961 CUY-271-6.80 PLANS  
FOR TRANSVERSE STORM  
SEWERS ORIGINAL CONSTRUCTION

FOR MONUMENTATION  
SEE SHEET 275.

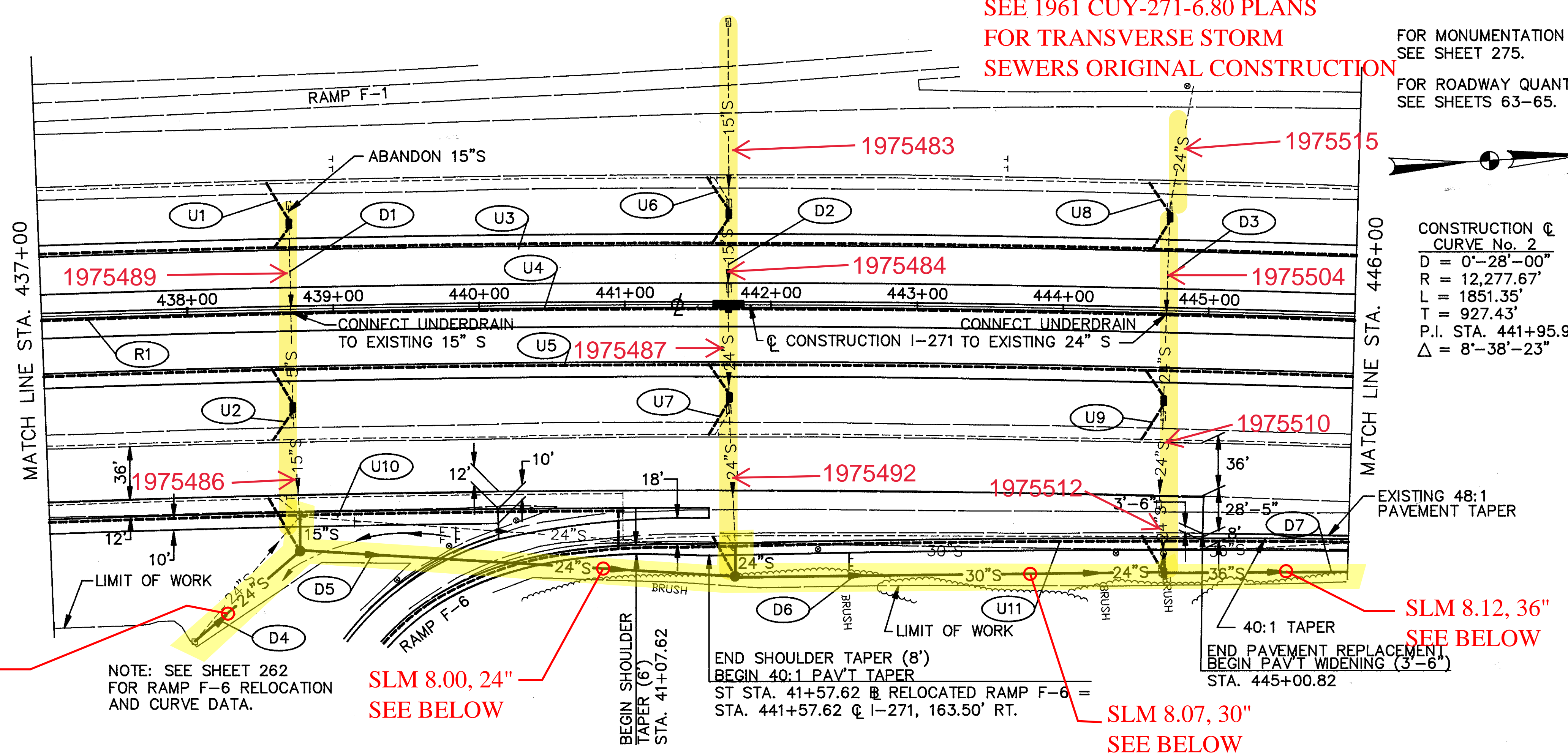
FOR ROADWAY QUANTITIES  
SEE SHEETS 63-65.

CALC. BY: JJB  
DATE: 5/93  
CHKD. BY: TJM  
DATE: 7/93

CUY-271-7.61

OHIO  
FHWA  
REGION 5

79  
568



CONSTRUCTION  $\phi$   
CURVE No. 2  
D = 0'-28'-00"  
R = 12,277.67'  
L = 1851.35'  
T = 927.43'  
P.I. STA. 441+95.95  
 $\Delta$  = 8'-38'-23"

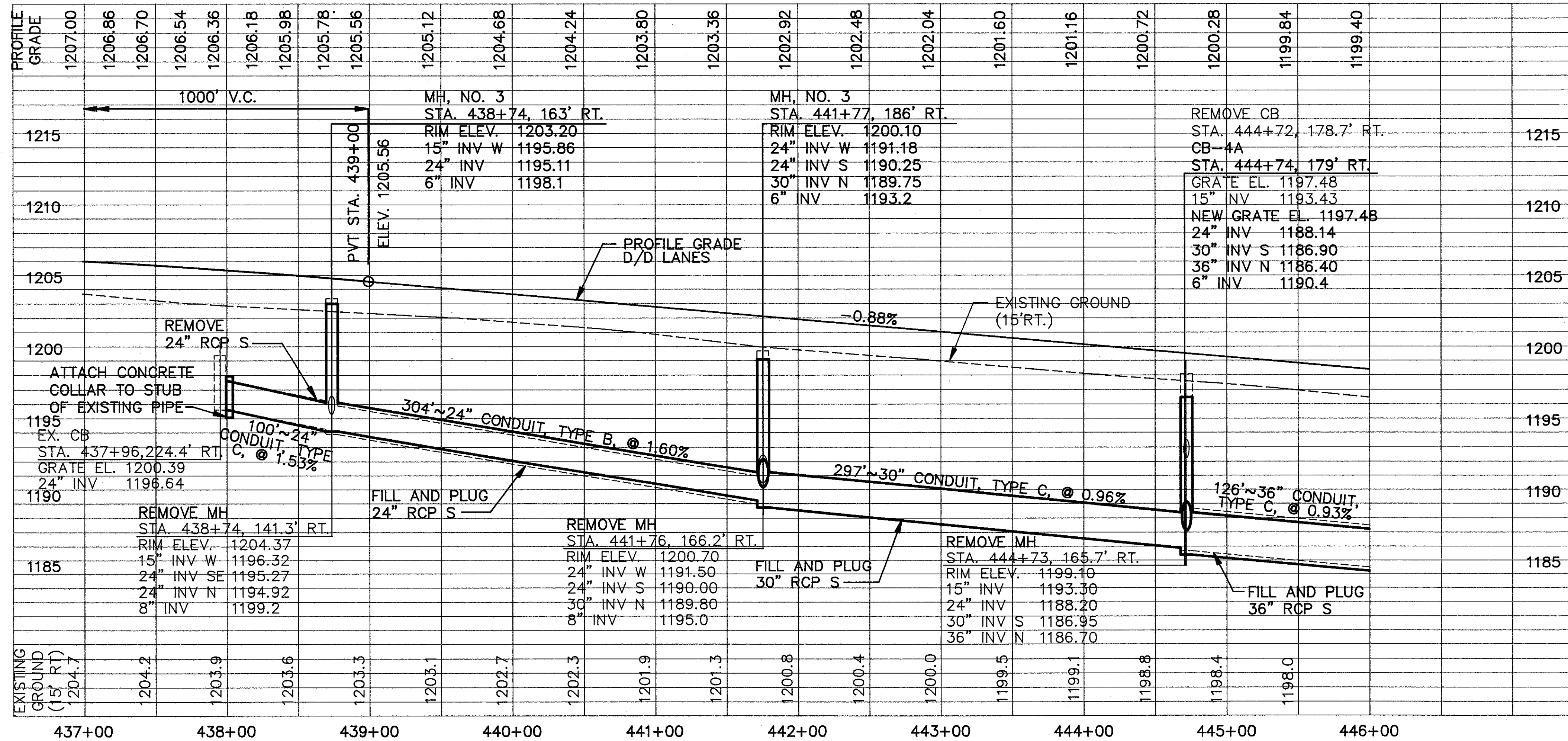
SLM 7.95, 24"  
SEE BELOW

NOTE: SEE SHEET 262  
FOR RAMP F-6 RELOCATION  
AND CURVE DATA.

SLM 8.00, 24"  
SEE BELOW

SLM 8.07, 30"  
SEE BELOW

SLM 8.12, 36"  
SEE BELOW



ESTIMATED QUANTITIES

REF.	FROM	TO	SIDE	ESTIMATED QUANTITIES																
				202	603			604			660									
LOCATION				FILL AND PLUG EXISTING CONDUIT	PIPE REMOVED, 24" AND UNDER	CATCH BASIN REMOVED	CATCH BASIN ABANDONED	MANHOLE REMOVED	15" CONDUIT, TYPE C, 706.02	15" CONDUIT, TYPE B, 706.02	24" CONDUIT, TYPE B, 706.02	24" CONDUIT, TYPE C, 706.02	30" CONDUIT, TYPE C, 706.02	36" CONDUIT, TYPE C, 706.02	CATCH BASIN, NO. 4 WITH 1" GRATE	CATCH BASIN, NO. 4A WITH 1" GRATE	INLET, NO. 3B50, A.P.P.	MANHOLE, NO. 3	SODDING	
L.F.	L.F.	EA.	EA.	EA.	L.F.	L.F.	L.F.	L.F.	L.F.	L.F.	L.F.	L.F.	L.F.	EA.	EA.	EA.	EA.	EA.	S.Y.	
DUAL-DUAL QUANTITIES																				
D1	438+71		L&R			1	1	26							2				200	
D2	441+71		L&R			3		18	18	6	19				2		1		200	
D3	444+71		L&R			2					39				2				200	
MAINLINE QUANTITIES																				
D4	437+96	438+74	R		101			1	26	100									1	
D5	438+74	441+77	R	303				1		328									1	
D6	441+77	444+72	R	297				1		18	297						1		100	
D7	444+72	446+00	R	127								126								
TOTALS					727	101	6	1	3	44	44	352	158	297	126	6	1	1	2	700

REF.	FROM	TO	SIDE	ESTIMATED QUANTITIES							
				6" CONDUIT, TYPE F	6" SHALLOW PIPE UNDERDRAIN WITH FABRIC WRAP	6" SHALLOW PIPE UNDERDRAIN WITH FABRIC WRAP, A.P.P.	6" FITTINGS	TEE	BEND	WYE	
L.F.	L.F.	L.F.	L.F.	L.F.	L.F.	L.F.	L.F.	L.F.	L.F.	L.F.	L.F.
DUAL-DUAL QUANTITIES											
U1	438+56.4	438+71	L	30						1	
U2	438+56.4	438+71	R	30						1	
U3	437+00	446+00	L	81			894			3	
U4	437+00	446+00	R	30			884	2			
U5	437+00	446+00	R	81			894			3	
U6	441+56.4	441+71	L	30						1	
U7	441+57.3	441+71.9	R	30						1	
U8	444+57.3	444+71.9	L	30						1	
U9	444+56.5	444+71.1	R	30						1	
MAINLINE QUANTITIES											
U10	437+00	440+95	R	67	433			1	2	1	
U11	441+57.6	446+00	R	66	443				2	2	
TOTALS					505	876	2672				