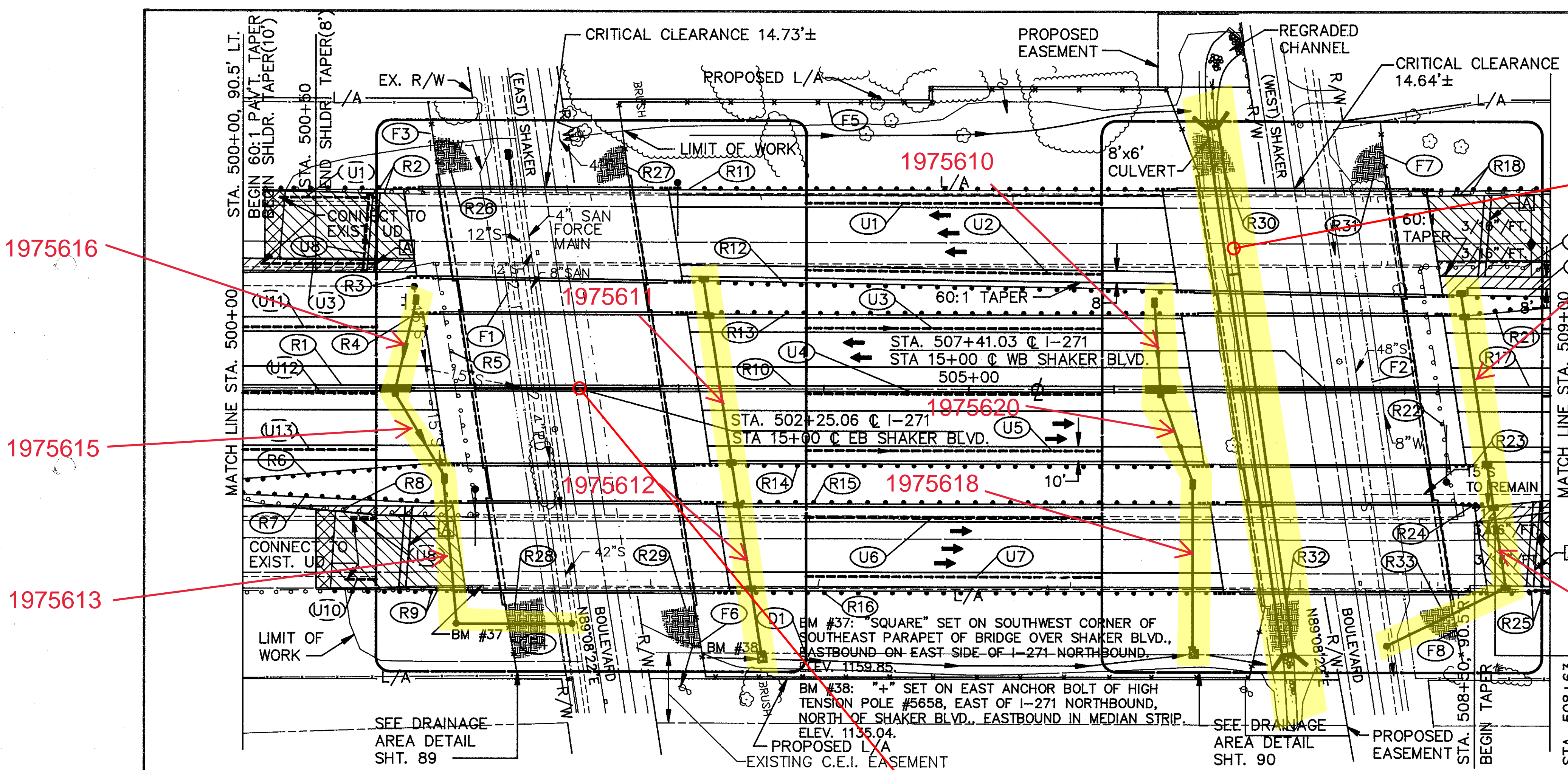


CUY-271-7.61



- \* PROPOSED CRITICAL CLEARANCE 14.73'±
- \*\* PROPOSED CRITICAL CLEARANCE 14.64'±
- (XX) SEE DETAIL SHEET FOR QUANTITY LISTING

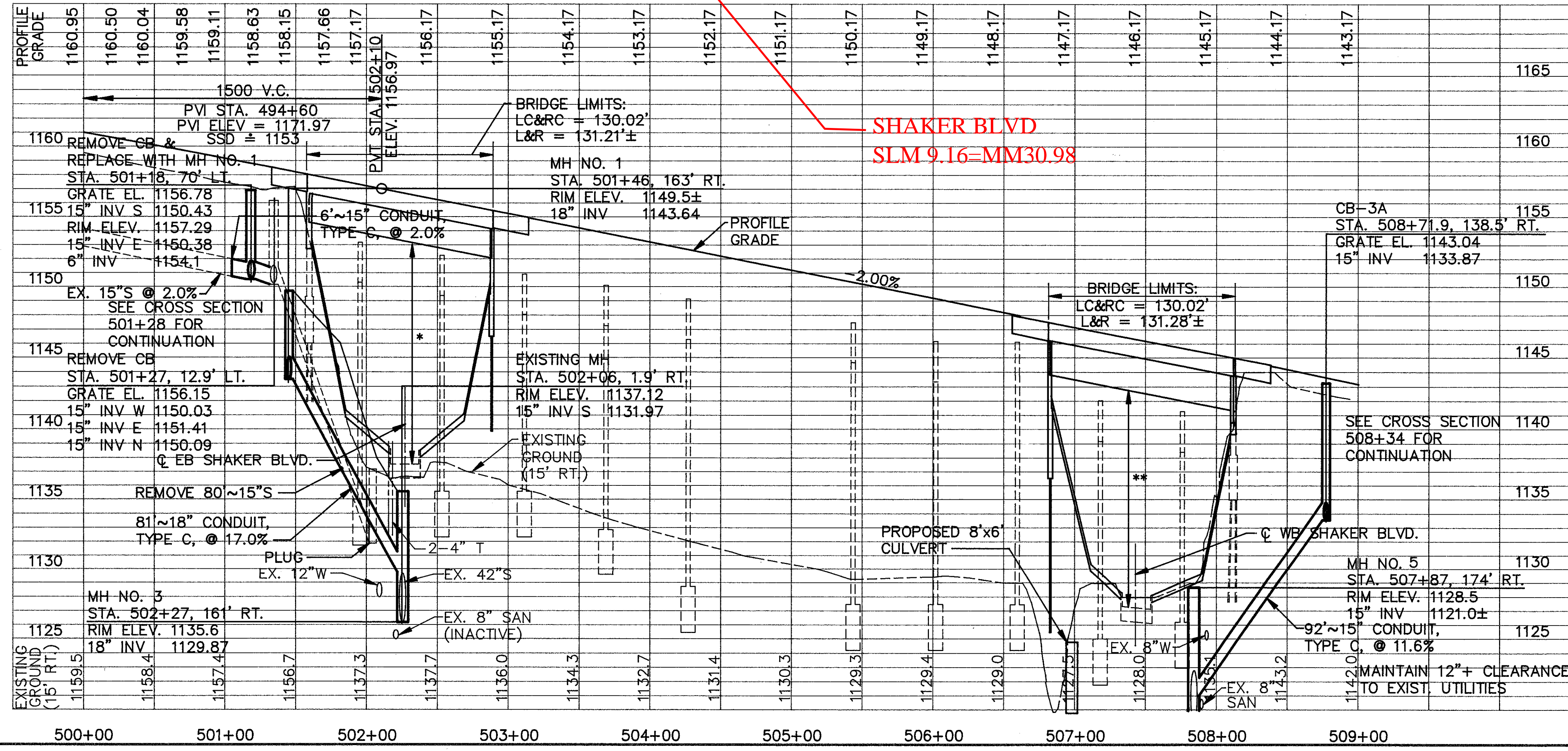
old CFN 182710928  
 new CFN 1864106  
 SLM 9.28, 8'x6'  
 CONCRETE BOX  
 SEE SHEETS 292-294

- 1975619 PRESSURE RELIEF JOINT, TYPE A (FOR ADDITIONAL DETAIL SEE BP-2.3)
- 1975620 10' MILL AND REPLACE - ITEM 446
- REMOVE & REPLACE PAVEMENT, FULL DEPTH (SEE TYPICAL SECTION)
- PAVEMENT WIDENING, FULL DEPTH (SEE TYPICAL SECTION)
- SEEDING AND JUTE MATTING - ITEM 667 (SEE STD. DWGS. MC-7 AND MC-10) INCLUDE WITH ROADWAY FOR PAYMENT

FOR MONUMENTATION SEE SHEET 275.  
 FOR ROADWAY QUANTITIES SEE SHEETS 63-65.

1975616  
 1975615  
 1975613

1975614



ESTIMATED QUANTITIES

REF.	FROM	TO	SIDE	ESTIMATED QUANTITIES				6" FITTINGS			
				6" CONDUIT, TYPE F	6" SHALLOW PIPE UNDER DRAIN WITH FABRIC WRAP	6" SHALLOW PIPE UNDER DRAIN WITH FABRIC WRAP, A.P.P.	SODDING	WYE	TEE	BEND	
DUAL QUANTITIES											
U3	503+08	506+47	L	28		339			2		
U4	503+15	506+29	R	10		314			1	1	
U5	503+21	506+58	R	22		337			2		
MAINLINE QUANTITIES											
D1	503+25	507+00	R				250				
U1	502+95	506+33	L	40	338				2		
U2	503+00	506+41	L	32	341				2		
U6	503+28	506+66	R	26	338				2		
U7	503+33	506+72	R	40	338				2		
U8	500+82	500+88	L		56						
TOTALS					198	1411	990	250			