

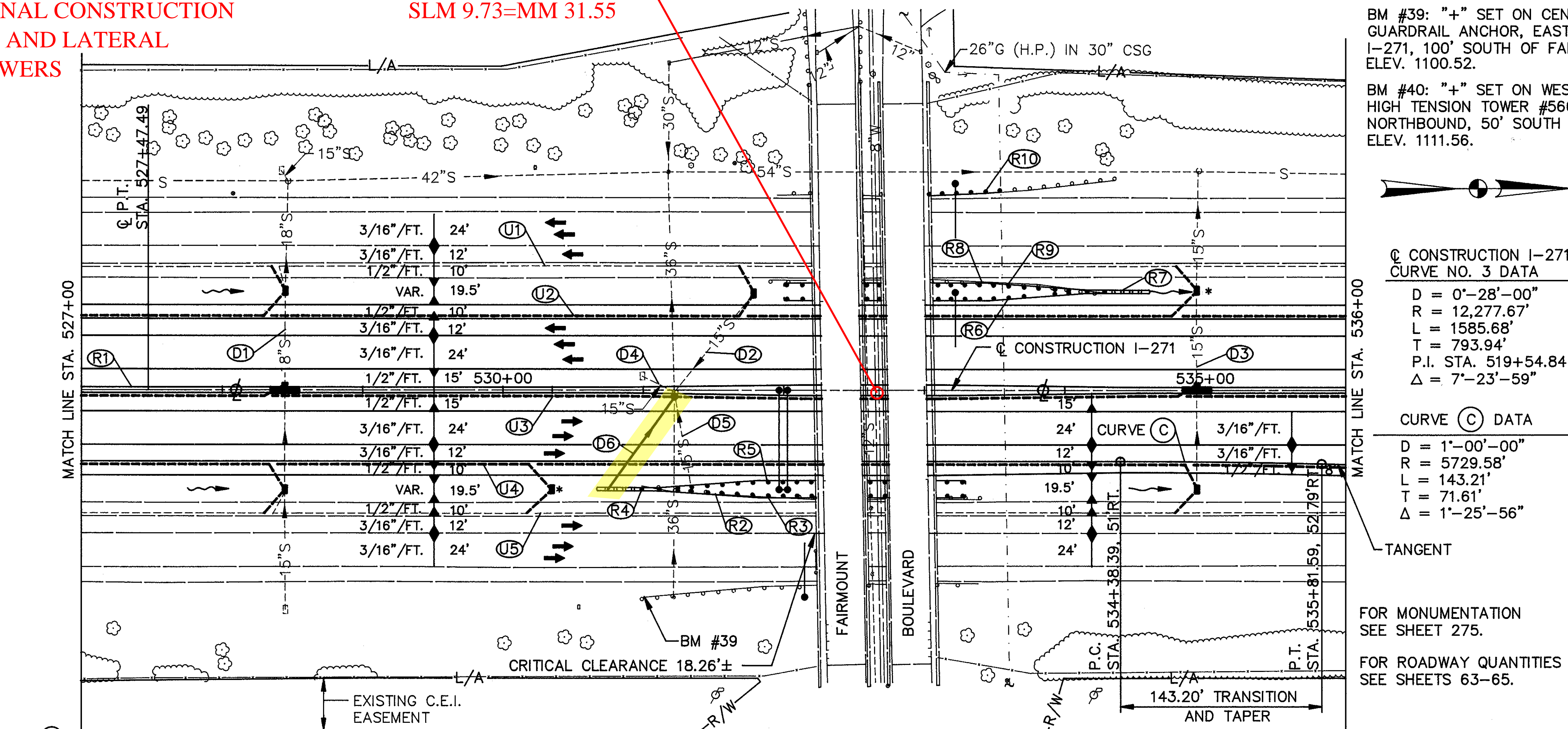
SEE 1961 CUY-271-6.80 PLANS
FOR ORIGINAL CONSTRUCTION
OF TRUNK AND LATERAL
STORM SEWERS

FAIRMOUNT BLVD
SLM 9.73=MM 31.55

CALC. BY: TJM
DATE: 6/93
CHKD. BY: JJB
DATE: 7/93

CUY-271-7.61

OHIO
FHWA REGION 5
94
568



BM #39: "+" SET ON CENTER ANCHOR BOLT OF GUARDRAIL ANCHOR, EAST SIDE OF NORTHBOUND I-271, 100' SOUTH OF FAIRMOUNT BLVD. ELEV. 1100.52.
BM #40: "+" SET ON WEST ANCHOR BOLT OF HIGH TENSION TOWER #5665, EAST SIDE OF I-271 NORTHBOUND, 50' SOUTH OF FAIRMOUNT BLVD. ELEV. 1111.56.

CONSTRUCTION I-271 CURVE NO. 3 DATA
D = 0'-28'-00"
R = 12,277.67'
L = 1585.68'
T = 793.94'
P.I. STA. 519+54.84
Δ = 7'-23'-59"

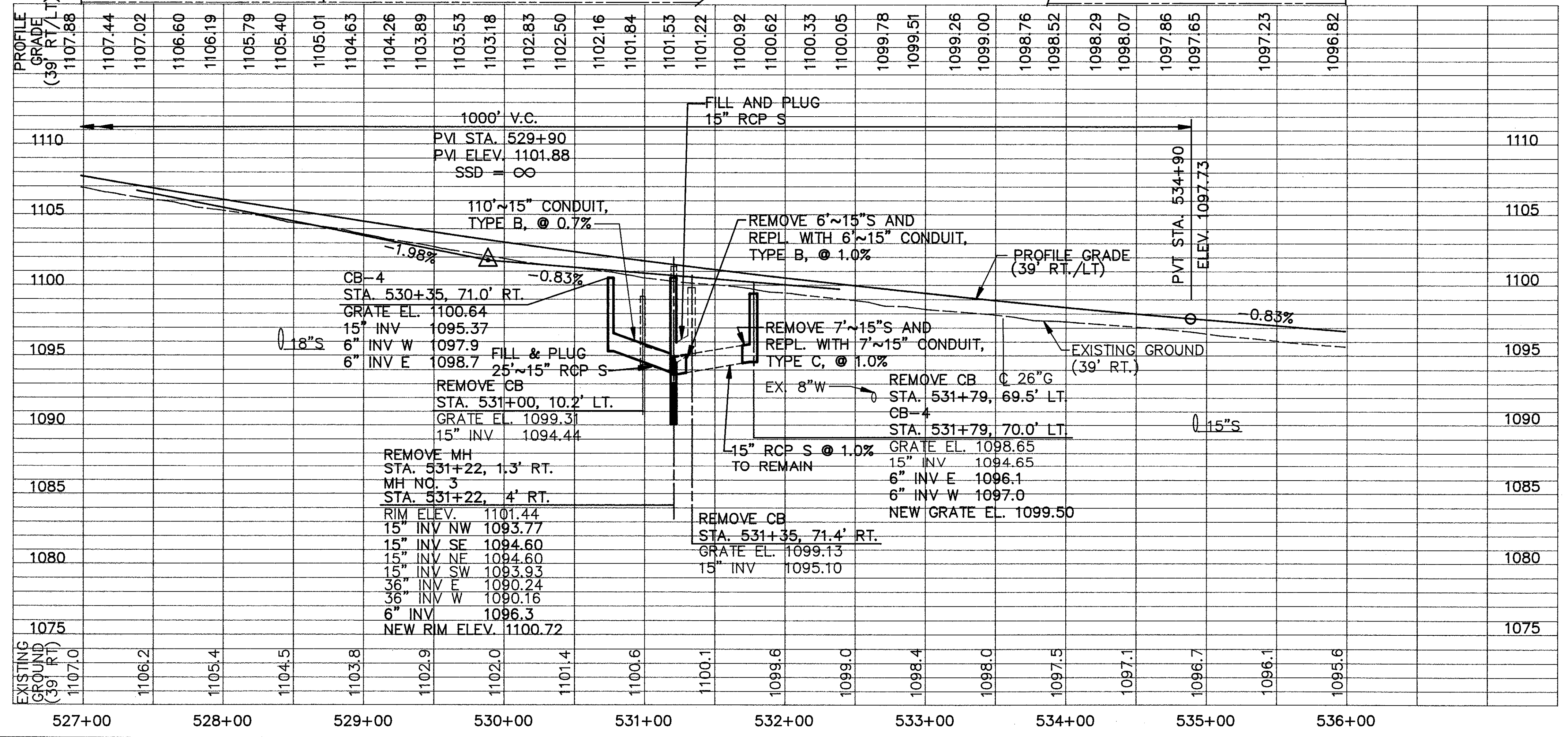
CURVE (C) DATA
D = 1'-00'-00"
R = 5729.58"
L = 143.21'
T = 71.61'
Δ = 1'-25'-56"

FOR MONUMENTATION
SEE SHEET 275.
FOR ROADWAY QUANTITIES
SEE SHEETS 63-65.

ESTIMATED QUANTITIES

REF.	FROM	TO	SIDE	SPCL 202		603		604		660				
				L.F.	EA.	L.F.	L.F.	EA.	EA.					
D1	528+45		L&R			7	14	2	1	200				
D2	531+00	531+79	L			6	7			100				
D3	534+94		L&R			14	21	2	1	200				
D4	531+00	531+22	L&R	25	1									
D5	531+22	531+35	R	71	1									
D6	530+67	531+22	R			110				100				
TOTALS				96	2	130	35	14	21	12	1	6	2	600

* CATCH BASIN NO. 4 WITHOUT 6" DIKE (SEE PLAN VIEW)



REF.	FROM	TO	SIDE	603		605		6" FITTINGS	
				L.F.	L.F.	TEE	BEND		
U1	527+00	536+00	L	64				3	
U2	527+00	536+00	L	65	896			3	
U3	527+00	536+00	R	30	886			2	
U4	527+00	536+00	R	64	896			3	
U5	527+00	536+00	R	65				3	
TOTALS				288	2678				