

MICROFILMED
JUL 3 1986

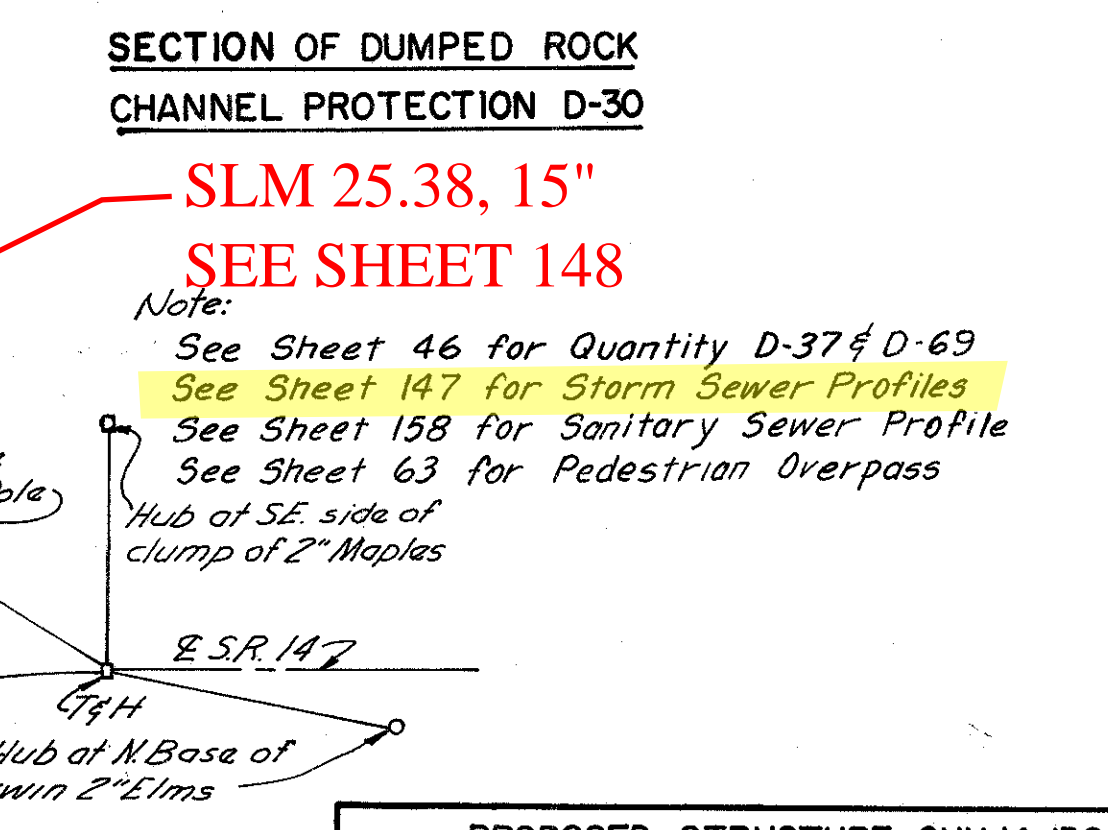
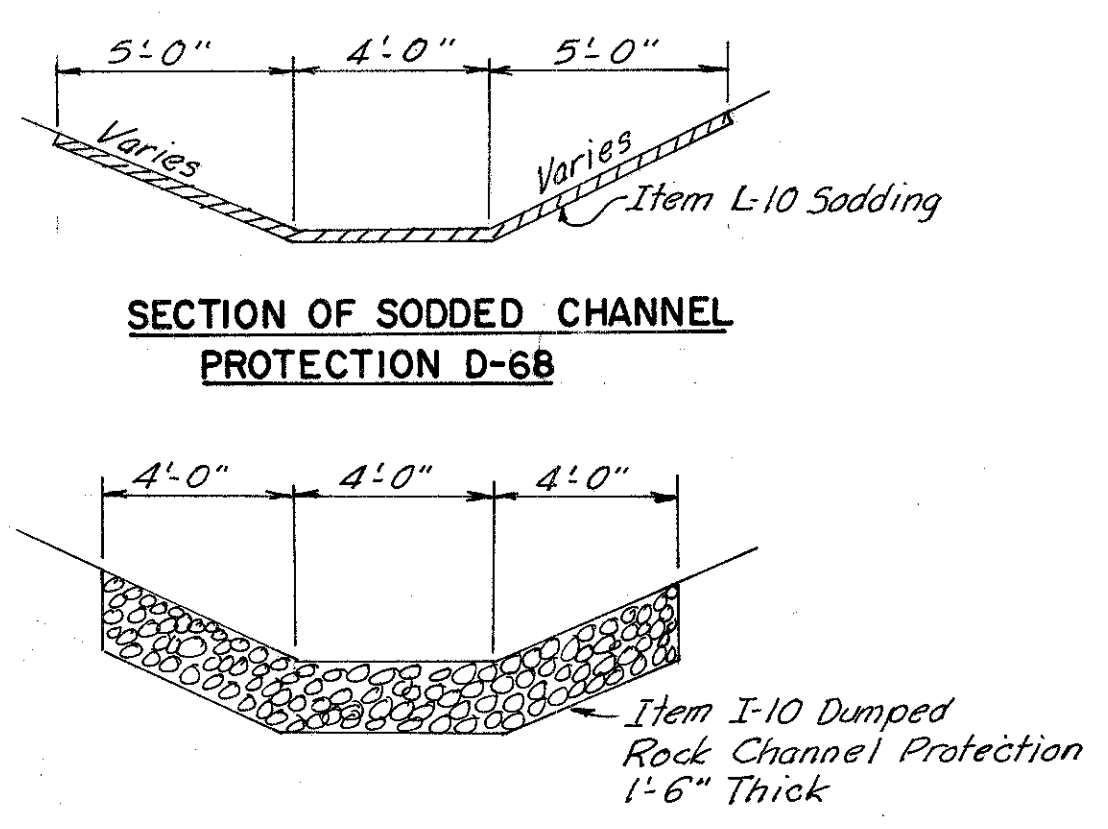
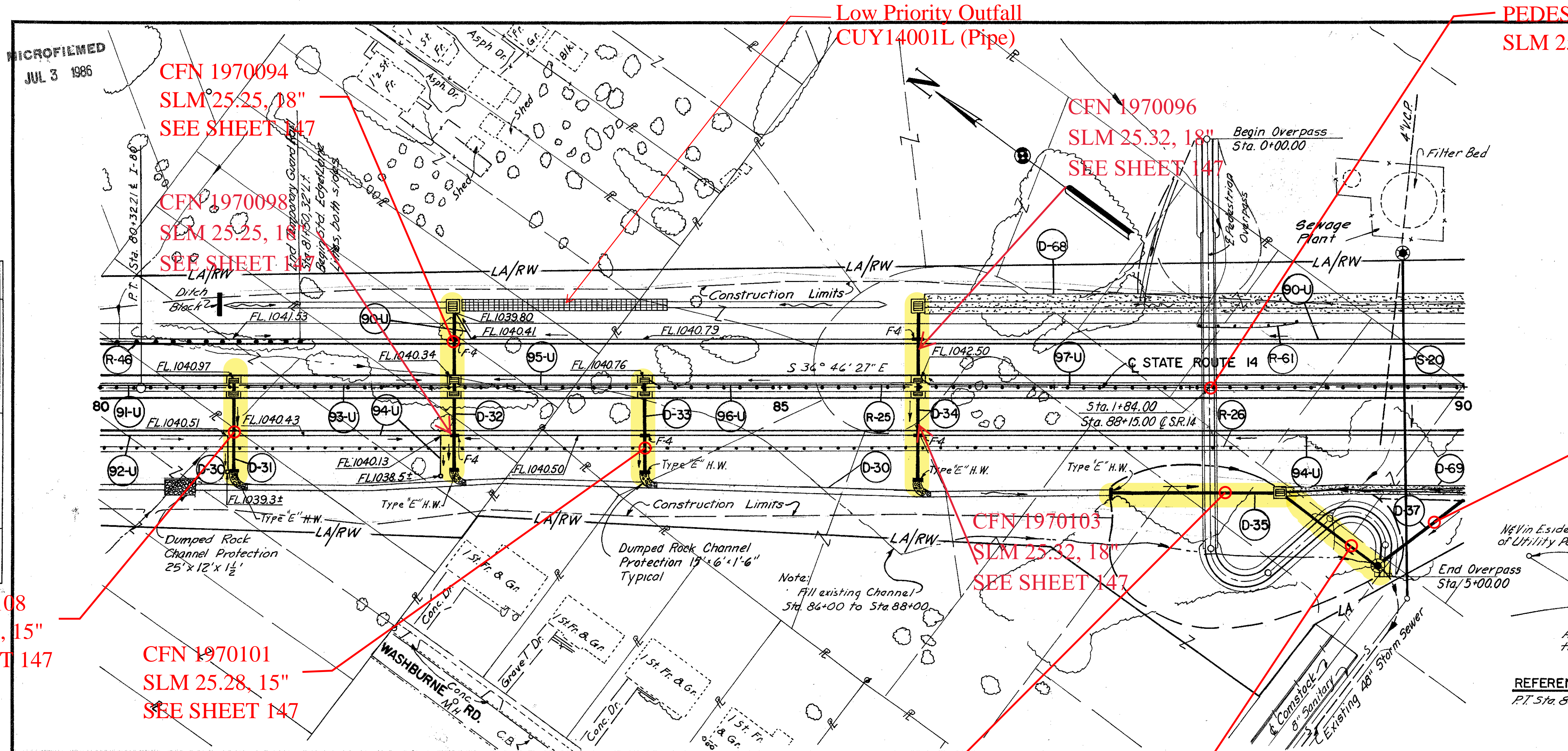
FED. RD. DIVISION	STATE	PROJECT	
2	OHIO	1985-00-1328	

CUYAHOGA COUNTY
CUY-14-13.28

45
246

PLAN	DATE	BY
SURVEYED	7/29/82	R.D.J.
PLOTTED		
ALIGNED CHECKED		
RT. OF WAY CHECKED		

PROFILE	DATE	BY
SURVEYED	7/29/82	R.D.J.
PLOTTED		
GRADES CHECKED		
STRUCTURE NOTATIONS		



Ref. No.	Station	Side	I-1 Class	I-1 Std. No. 1	I-8 Class	I-8 Std. No. 1
	From	To	8"	M&B(b)	M&B(b)	MH
	3+20	89+55	L&R	255'		1

SLM 25.38, 15"
SEE SHEET 148

Note:
See Sheet 46 for Quantity D-37 & D-69
See Sheet 147 for Storm Sewer Profiles
See Sheet 158 for Sanitary Sewer Profile
See Sheet 63 for Pedestrian Overpass
Hub of SE side of clump of 2" Maples

PROPOSED STRUCTURE CUY-14-1364

TYPE: Continuous steel beam with reinforced concrete deck and substructure
SPANS: 50'-0"; 95'-0"; 50'-0"
WALKWAY: 8'-0"
LOADING: 85 lbs. per sq. ft.
SKEW: None
WEARING SURFACE: 1/2" Monolithic Concrete
APPROACH SLABS: None
ALIGNMENT: Tangent

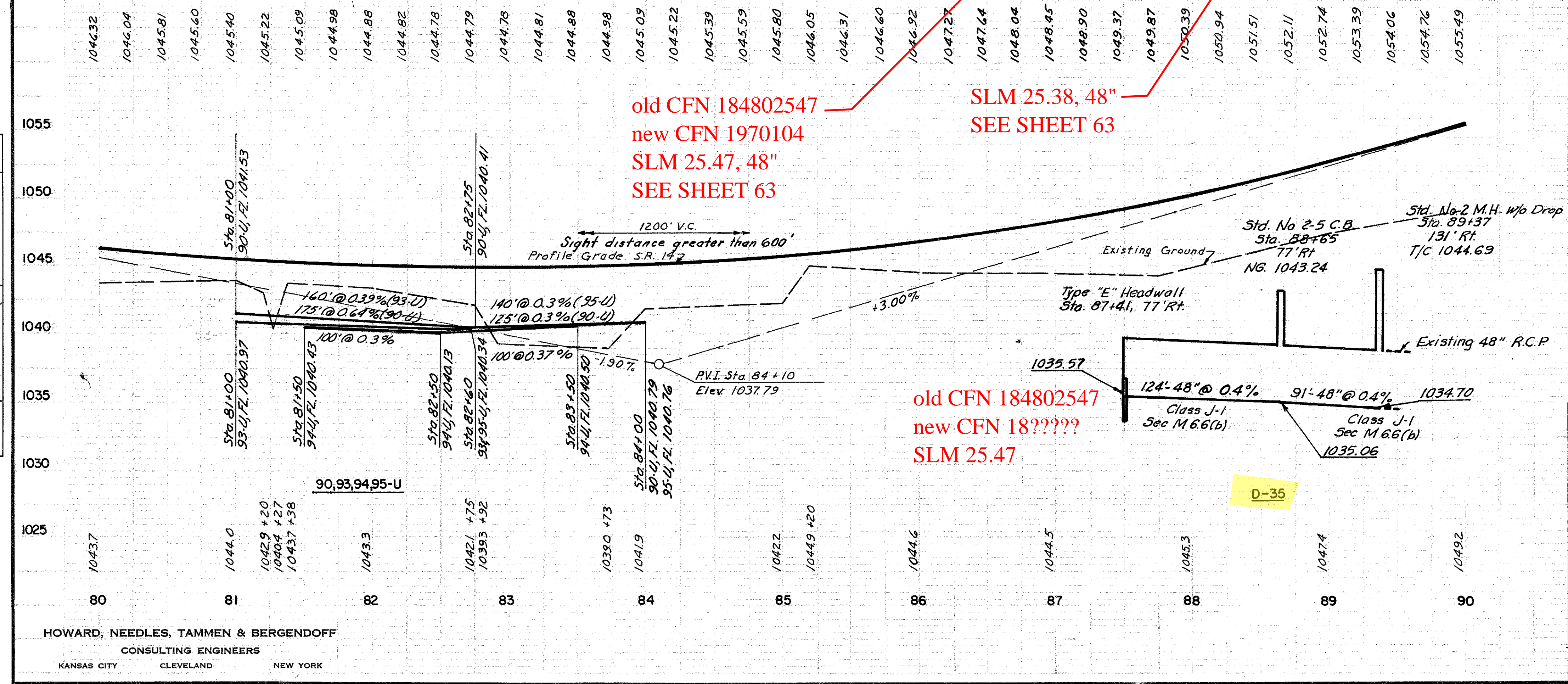
BENCH MARK II2-C
Lag bolt & washer in W. root of 10" locust tree 130' Lt. of Sta. 87+05
Elev. 1052.60

Ref. No.	Station	Side	I-15	I-5
			Steel Beam	Temporary
			Type (Deep)	Type (Barrier)
			18"	15"
	From	To	Lin. Ft.	
R-25	80+00	90+00	1000	
R-26	80+00	88+27	827	
R-61	88+10	88+85	75	
R-46	80+00	81+50	150	
Total			902	1000

Ref. No.	Station	Profile Sheet No.	I-1				I-5			
			CI-F-4	CI-F-4	CI-F-3	Class I-3	6"-60"	6"-90"	6"x6"x6"	
	From	To	Lin. Ft.							
90-U	80+00	90+00	Lt.	30	995	1				
91-U	80+00	81+00	Lt.	10	90					
92-U	80+00	80+95	Rt.	10	110					
93-U	81+00	82+60	Lt.	10	150					
94-U	81+00	90+00	Rt.	30	10	890				
95-U	82+60	83+95	Lt.	10	125					
96-U	84+00	85+95	Lt.	10	185					
97-U	86+00	90+00	Lt.	10	390					
				110	20	2935				

Ref. No.	Station	Side	Profile Sheet No.	From	To	Rt.	From	To	Rt.	Total
D-30	80+50		80+75							
D-31	81+00		147							
D-32	82+60		147							
D-33	84+00		147							
D-34	86+00		147							
D-35	87+50		89+57							
D-68	86+00		90+65							

Excavation	6,060	Cu. Yds.
Embankment	8,392	Cu. Yds.
Embankment +18%	9,903	Cu. Yds.



HOWARD, NEEDLES, TAMMEN & BERGENDOFF
CONSULTING ENGINEERS
KANSAS CITY CLEVELAND NEW YORK