

SLM 7.40, 66"  
SEE SHEET 115

SLM 7.50, 48"  
SEE SHEET 122

old CFN 184800759  
new CFN 1884799  
SLM 7.59, 48"  
SEE SHEET 122

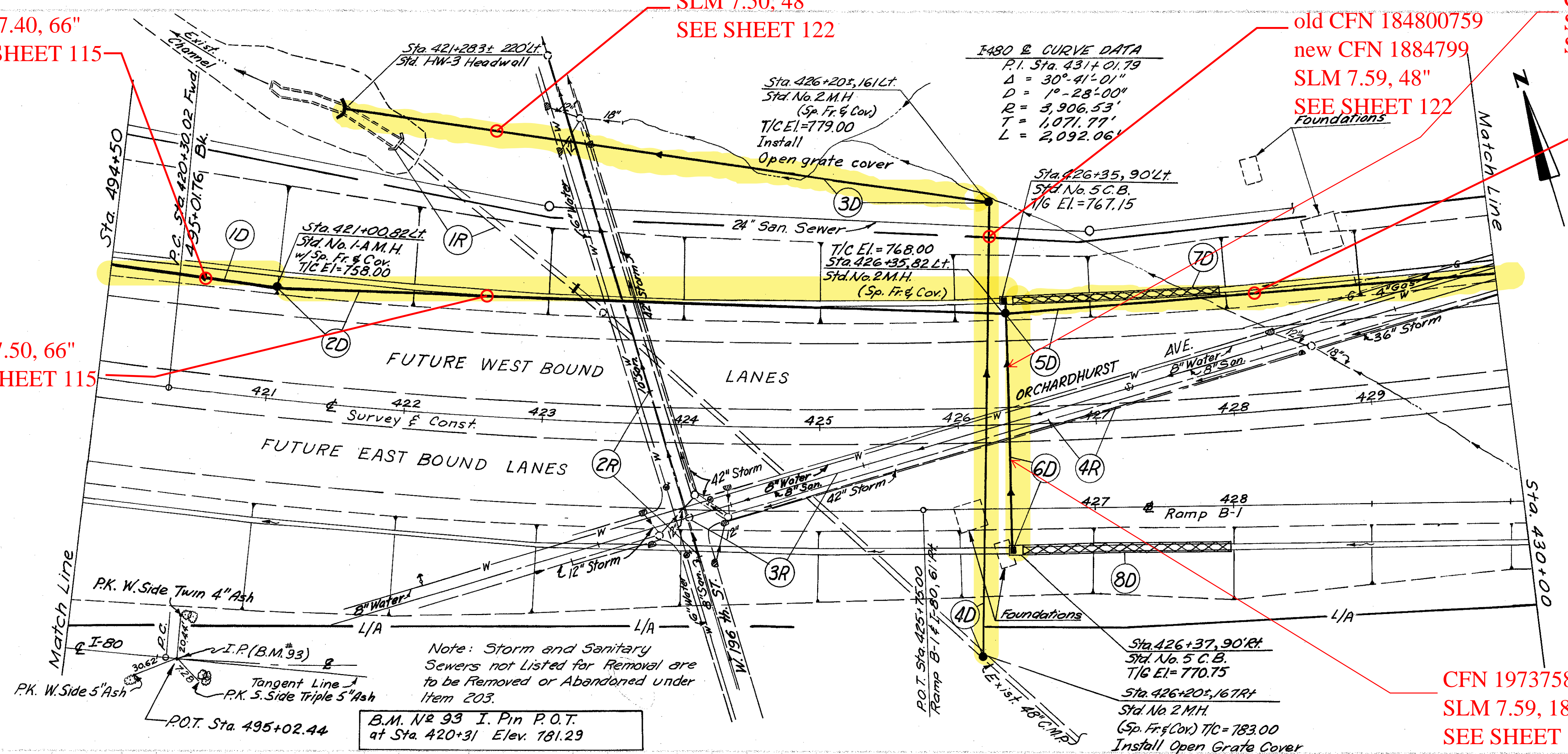
CFN 1973757  
SLM 7.59, 18"  
SEE SHEET 115

SLM 7.59, 66"  
SEE SHEET 115  
AND 116

CUYAHOGA COUNTY  
CUY-480-8.00  
CUY-17-7.59

SEE 1978 CUY-480-6.78  
Sheets 29 and 74

SLM 7.50, 66"  
SEE SHEET 115



**I-480 & CURVE DATA**  
P.I. Sta. 431+01.79  
Δ = 30°-41'-01"  
D = 1°-28'-00"  
R = 3,906.53'  
T = 1,071.77'  
L = 2,092.06'

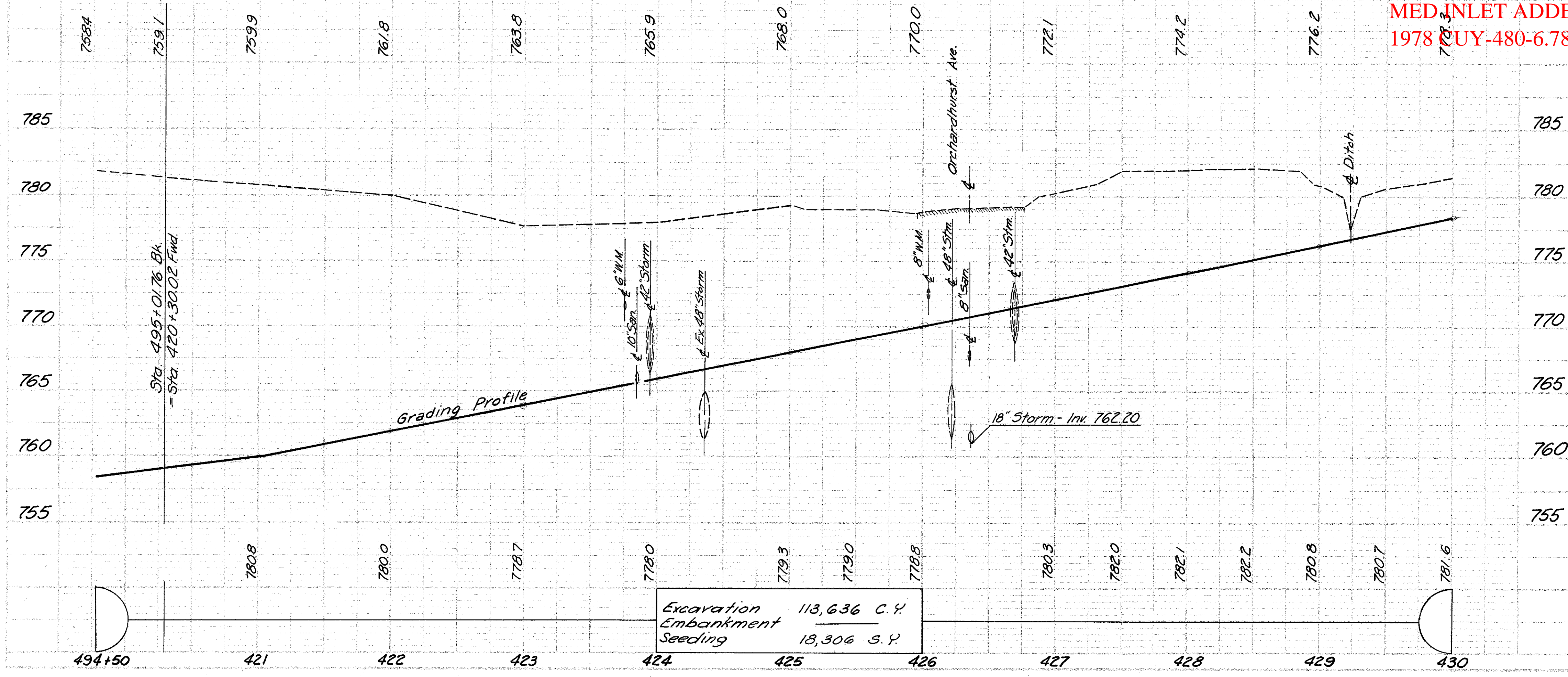
Tree Removal  
40' 00" to 430+00  
Size N<sup>a</sup>  
18" 10

Sheet No.	Item
105-121 & 122	Storm Sewer Profiles
155/156	Sanitary Sewer
182/183	Water Line Work

Note: Storm and Sanitary Sewers not Listed for Removal are to be Removed or Abandoned under Item 203.

B.M. N<sup>o</sup> 93 I. Pin P.O.T. at Sta. 420+31 Elev. 781.29

CFN 1973758  
SLM 7.59, 18"  
SEE SHEET 121  
MED INLET ADDED  
1978 CUY-480-6.78



Excavation 113,636 C.Y.  
Embankment  
Seeding 18,306 S.Y.

DRAINAGE	Item	Quantity	603		602		202	
			LF	EA	LF	EA	LF	EA
603	Type "C" Class "B" Bedding	75'						
	Seeding and Jute Matting							
	No. 5 C.B.							
	No. 2 M.H. (Spec. Fr. & Cov.)							
	No. 1-A Manhole (Spec. Fr. & Cov.)							
	Type "C" 706.02 Cl. II	66'						
	Type "C" 706.02 Cl. IV	66'						
	Type "C" 706.02 Cl. III	66'						
	Type "C" 706.02 Cl. II	48'						
	Type "B" 706.02 Cl. III	48'						
602	Type "B"	18'						
	Concrete Masonry							
	Headwalls Removed							
202	Manholes Removed							
	Pipe Removed over 24"							
	Pipe Removed 24" & Under							
	TOTALS							

\* Open Grate Cover See Sheet No. 146  
\*\* 1D, 2D, and 5D - 77.6% Interstate, 22.4% Urban