

SLM 21.37, 15"
SEE SHEET 110

old CFN 184802137
new CFN 1833061
SLM 21.37, 21"
SEE SHEET 109

SLM 21.40, 33"
SEE SHEET 109
DOWNSTREAM
CHANNEL EASEMENT
SEE ROW SHEETS 18
AND 26. SEE ROW
SHEET 27 FOR SEWER

SLM 21.49, 27"
SEE SHEET 111
DOWNSTREAM
CHANNEL EASEMENT
SEE ROW SHEET 16

SLM 21.52, 27"
SEE SHEET 111

CFN 1974764
SLM 21.52, 15"
SEE SHEET 126

CFN 1974761
SLM 21.52, 15"
SEE SHEET 126

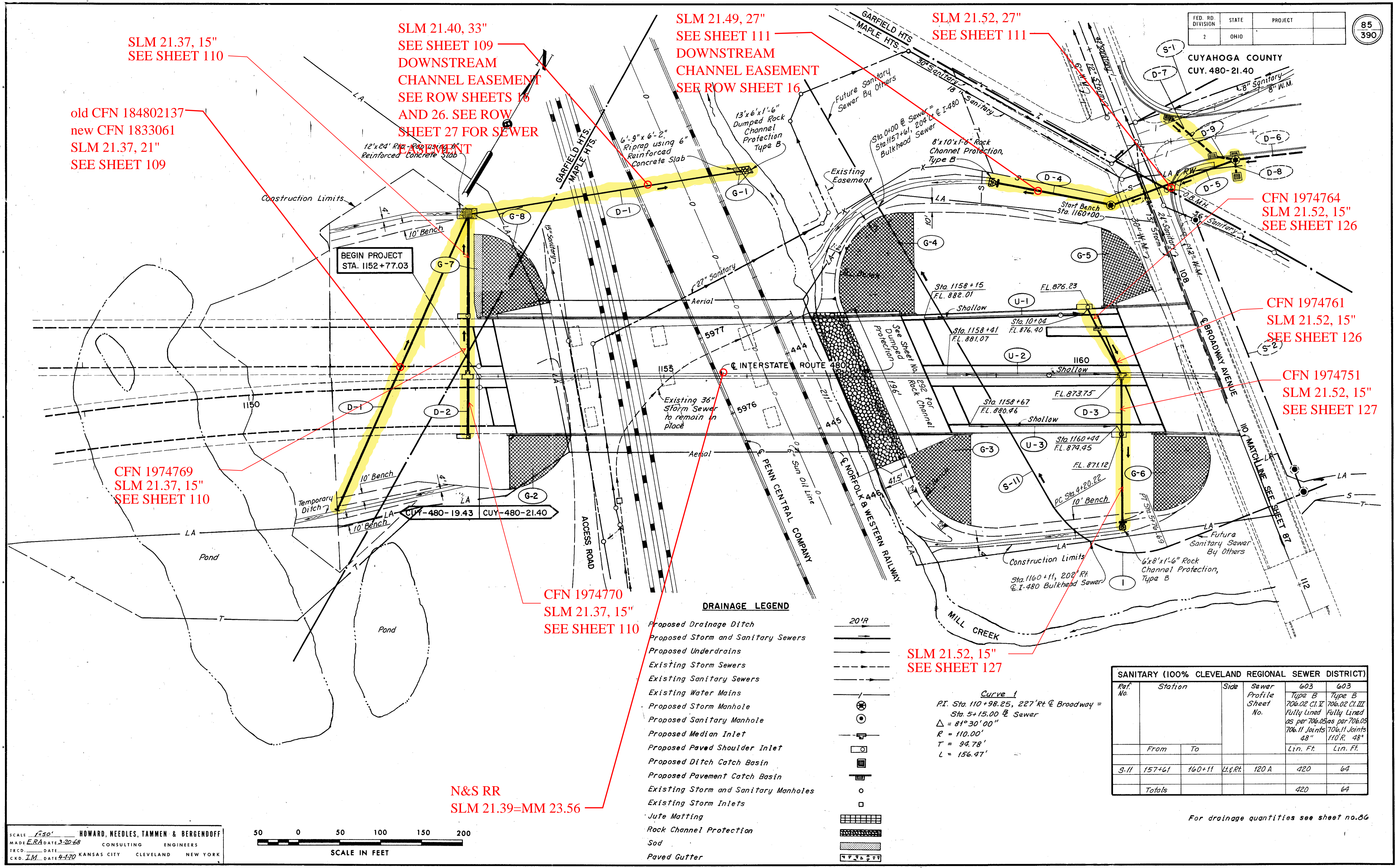
CFN 1974751
SLM 21.52, 15"
SEE SHEET 127

CFN 1974769
SLM 21.37, 15"
SEE SHEET 110

CFN 1974770
SLM 21.37, 15"
SEE SHEET 110

SLM 21.52, 15"
SEE SHEET 127

N&S RR
SLM 21.39=MM 23.56



DRAINAGE LEGEND

- Proposed Drainage Ditch
- Proposed Storm and Sanitary Sewers
- Proposed Underdrains
- Existing Storm Sewers
- Existing Sanitary Sewers
- Existing Water Mains
- Proposed Storm Manhole
- Proposed Sanitary Manhole
- Proposed Median Inlet
- Proposed Paved Shoulder Inlet
- Proposed Ditch Catch Basin
- Proposed Pavement Catch Basin
- Existing Storm and Sanitary Manholes
- Existing Storm Inlets
- Jute Matting
- Rock Channel Protection
- Sod
- Paved Gutter

Curve 1
P.I. Sta. 110+98.25, 227' Rt @ Broadway =
Sta. 5+15.00 @ Sewer
Δ = 81°30'00"
R = 110.00'
T = 94.78'
L = 156.47'

SANITARY (100% CLEVELAND REGIONAL SEWER DISTRICT)					
Ref. No.	Station	Side	Sewer Profile Sheet No.	603 Type B 706.02 C.I. II Fully Lined 48" Joints	603 Type B 706.02 C.I. III Fully Lined 48" Joints
	From	To		Lin. Ft.	Lin. Ft.
S-11	157+61	160+11 Lt. Rt.	120 A	420	64
Totals				420	64

For drainage quantities see sheet no. 86

