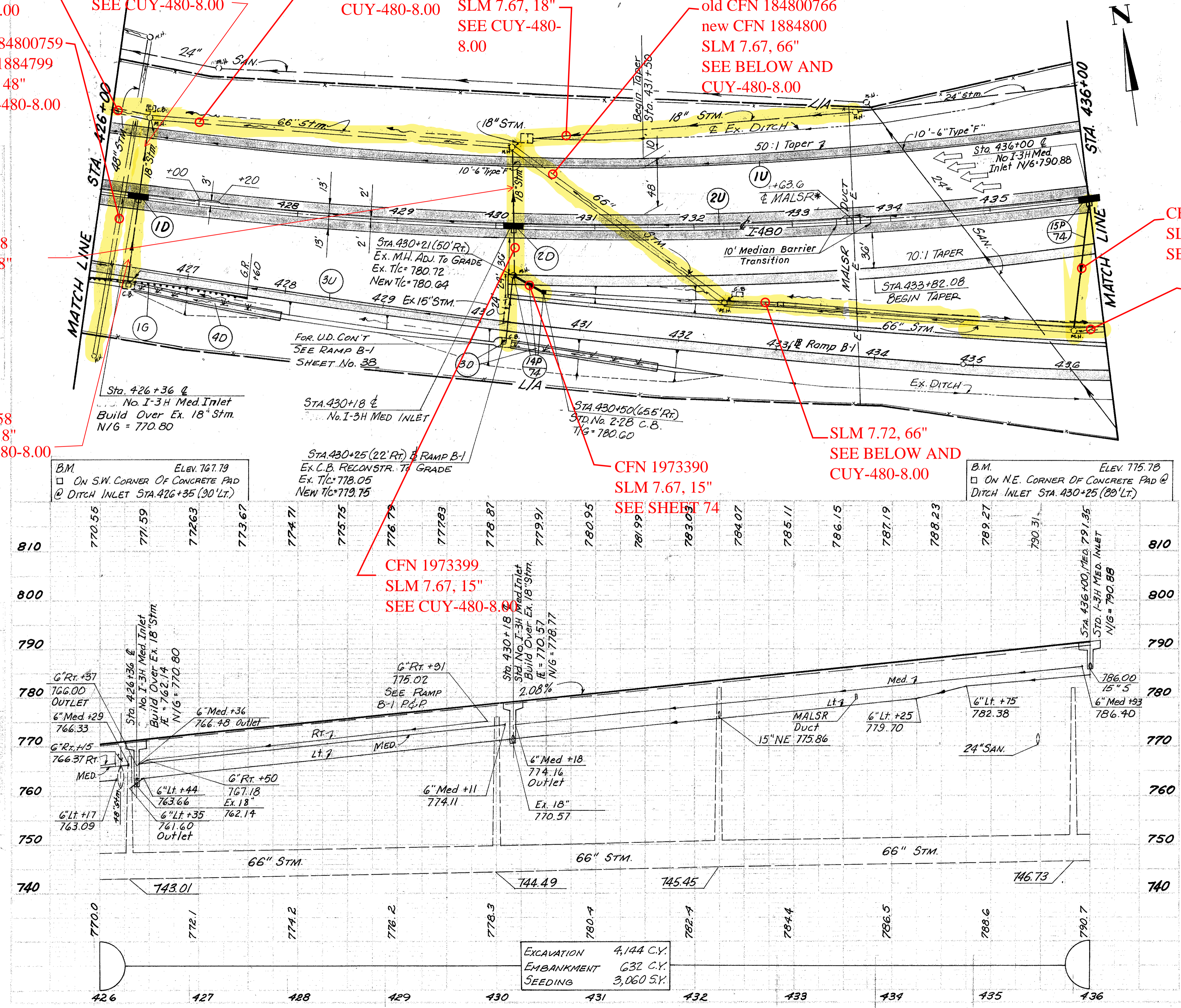


CROSS REFERENCE	
SH. NO	ITEM
74	SEWER PROFILES
38	RAMP B-1 P&P
70, 71	PAVEMENT DETAILS
92	MALSR BARRIER DETAILS

CUYAHOGA COUNTY  
 CUY-480-678



ROADWAY	ITEM	EA.	LF.	EA.	LF.	EA.	LF.	EA.	LF.	EA.	LF.
606	Anchor Assembly Type A										
	Guard Rail, Type 5										
	Anchor Assembly Type T										
600	SODDING			125	125						250
605	BENDS & BRANCHES										
	Underdrain Unclassified										
	Underdrain Deep										
	Underdrain Shallow										
604	STD. 2-2-B CATCH BASIN										
	No. I-3H Median Inlet M.H. ADJUSTED TO GRADE										
	C.B. RECONSTR. TO GRADE										
603	Type B										
	TYPE F										
Estimated Quantities	REP. Side										
	Location										
Total											

EXCAVATION 4,144 C.Y.  
 EMBANKMENT 632 C.Y.  
 SEEDING 3,060 S.Y.

\* Existing 14'-0" Concrete Barrier Section with 15'-0" Pole and Flasher Unit. The Contractor shall confirm the location and depth of the MALSR duct before beginning work in the area.