

ROCKY RIVER DRIVE (SR 237)
SLM 7.91 = MM 10.08

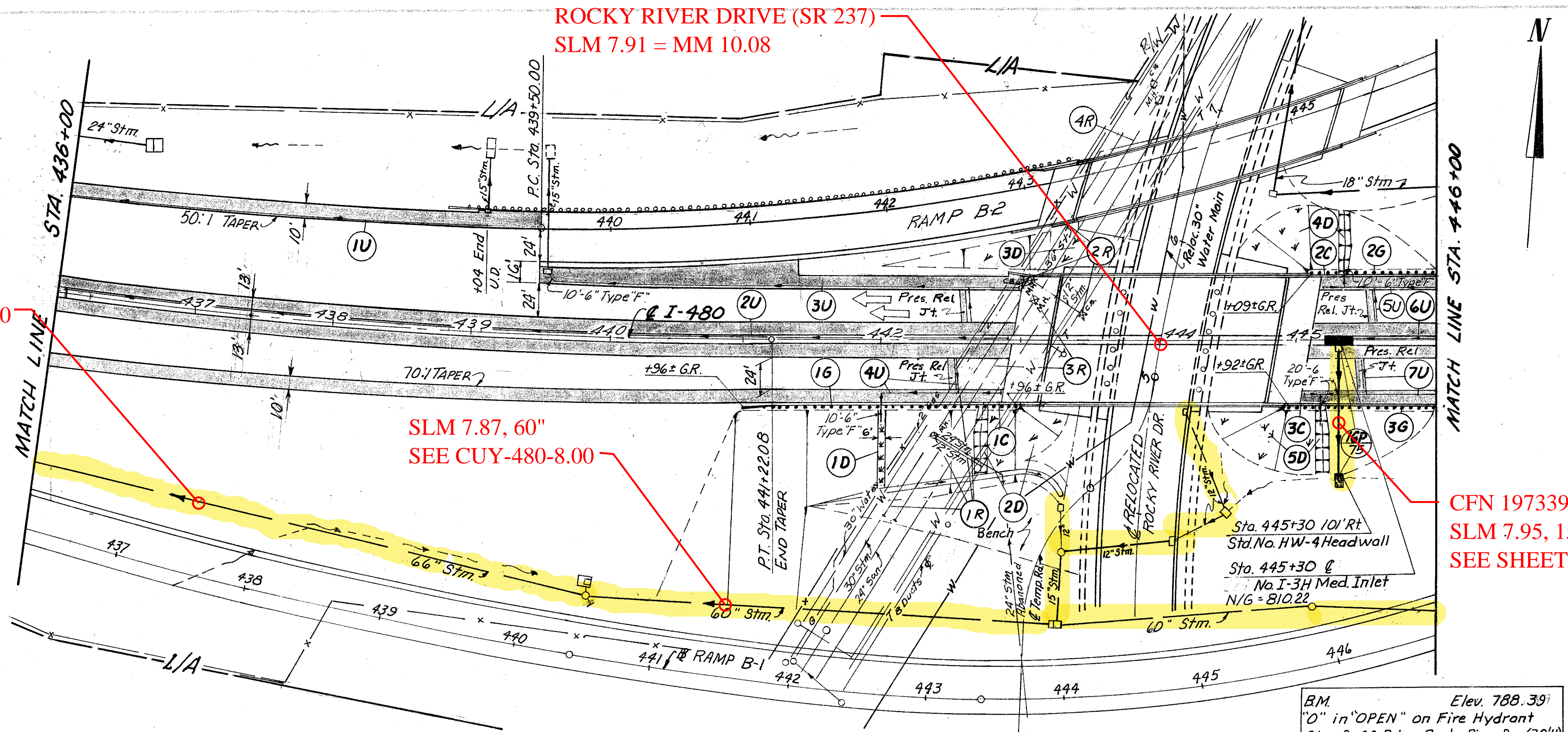
SLM 7.78, 66"
SEE CUY-480-8.00

SLM 7.87, 60"
SEE CUY-480-8.00

CFN 1973397
SLM 7.95, 15"
SEE SHEET 75

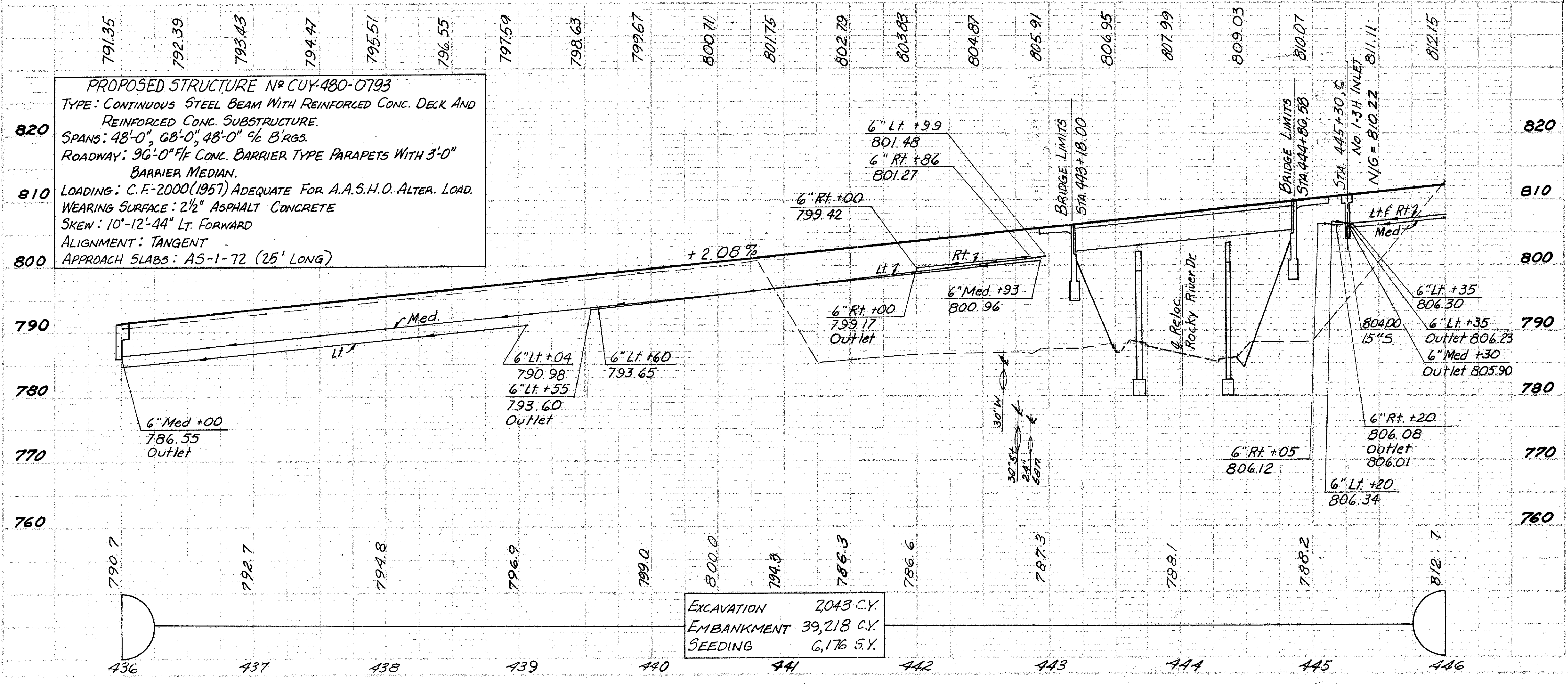
CROSS REFERENCE		DIVISION		STATE		PROJECT		TYPE	
39	RAMP B-1 P&P	2	OHIO						30
40	RAMP B-2 P&P								317
56	ROCKY RIVER DR. P&P								
75	SEWER PROFILE								
277	STRUCTURE								
72	PAVEMENT DETAIL								
209,210	Relocated Water Main								

CUYAHOGA COUNTY
CUY-480-678
CALC BY T.R.B. DATE 11-75
CHKD BY E.J.K. DATE 1-76



ESTIMATED QUANTITIES		202				
REF. No.	SIDE	LOCATION	L.F.	L.F.	EA.	EA.
1R	Rt/Lt	442+04 to 443+07	104	206		1
2R	Lt	443+07 to 443+95	150	165	2	1
3R	Rt/Lt	442+10 to 443+10	190			1
4R	Lt	443+10 to 444+00	170			
TOTAL			614	371	2	3

REF. No.	SIDE	LOCATION	L.F.	L.F.	EA.	EA.	ROADWAY		EROSION CONTROL		DRAINAGE	
							L.F.	EA.	L.F.	EA.	L.F.	EA.
609		Concrete Curb Type 6										
606		Anchor Assembly Type A										
606		Bridge Terminal Assembly Type A										
606		Guard Rail Type 5										
660		SODDING	40	246								
660		Reinforced Sodding	53	171								
601		Rock Channel Protection Type B										
605		Bends & Branches										
605		Underdrain Shallow										
604		No I-3H Median Inlet										
603		BENDS & BRANCHES Type B										
603		Type F										
602		Concrete Masonry										
TOTAL			70	55	42							



PROPOSED STRUCTURE No CUY-480-0793
TYPE: CONTINUOUS STEEL BEAM WITH REINFORCED CONC. DECK AND REINFORCED CONC. SUBSTRUCTURE.
SPANS: 48'-0", 68'-0", 48'-0" @ 6 BRGS.
ROADWAY: 36'-0" CONC. BARRIER TYPE PARAPETS WITH 3'-0" BARRIER MEDIAN.
LOADING: C.F.-2000(1957) ADEQUATE FOR A.A.S.H.O. ALTER. LOAD.
WEARING SURFACE: 2 1/2" ASPHALT CONCRETE
SKEW: 10'-12'-44" Lt. FORWARD
ALIGNMENT: TANGENT
APPROACH SLABS: A5-1-72 (25' LONG)

EXCAVATION 2043 C.Y.
EMBANKMENT 39,218 C.Y.
SEEDING 6,176 S.Y.