

W. 130th STREET  
SLM 10.54=MM 12.71

CFN 1974425  
SLM 10.53, 21"  
SEE SHEET 85 and 97

CFN 1974425  
SLM 10.59, 18"  
SEE SHEET 66 and 97

SLM 10.59, 15"  
SEE SHEET 115

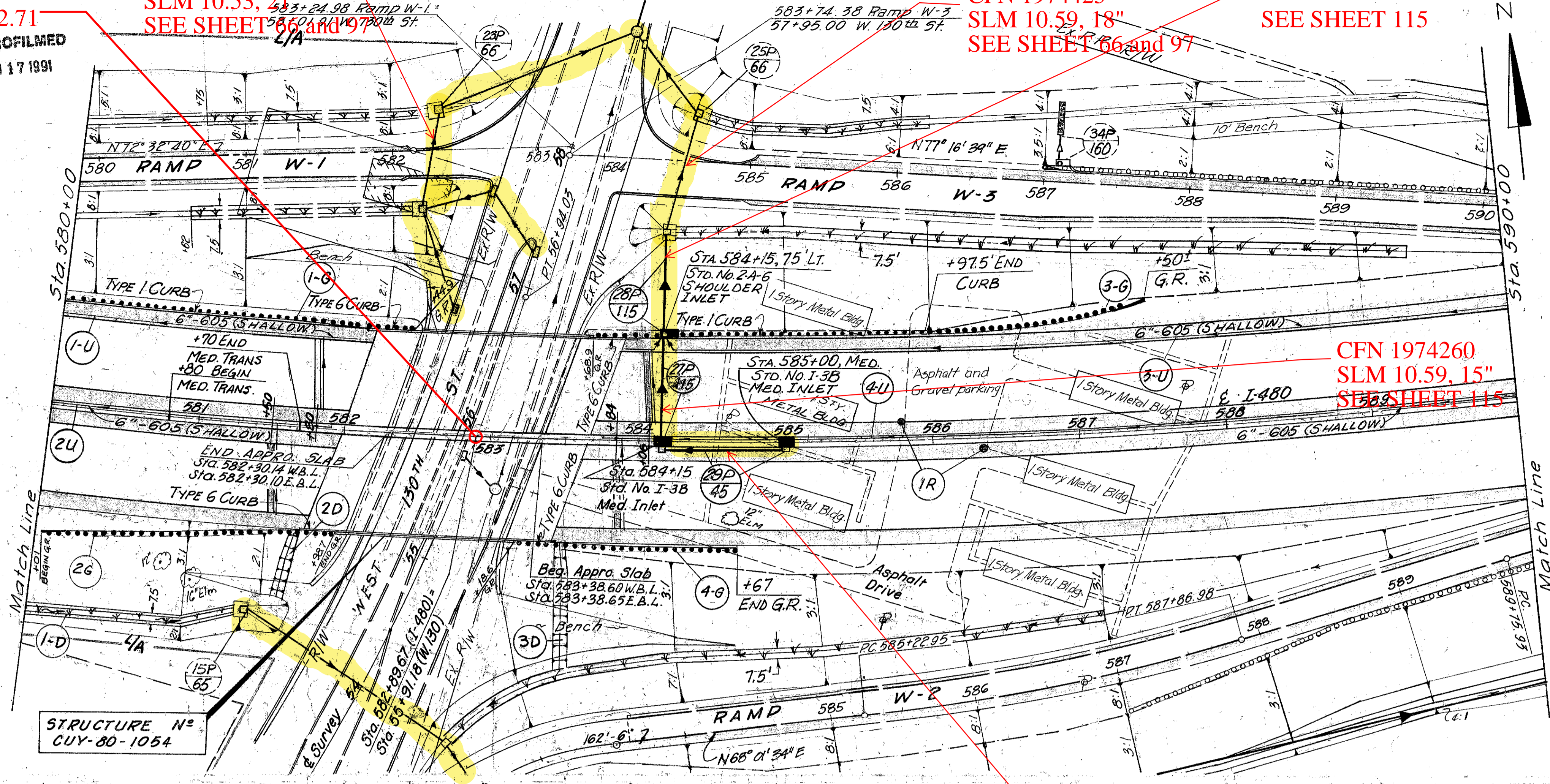
Tang I. 807  
D. Hole 89.92  
I. Pin P.I. #3  
Sta. 583+16.04  
5'-5' Conc. SW

45  
500

CUYAHOGA COUNTY  
CUY-480-10.39

CALC. BY WAM DATE 3/75  
CHKD. BY E.J.K. DATE 3/75

**I-480 CURVE DATA**  
PI Sta 583+16.04 (Back)  
Sta 583+71.11 (Forward)  
 $\Delta = 29^{\circ}46'15"$   
 $Dc = 1^{\circ}15'00"$   
 $R = 4,583.66'$   
 $T = 1218.37'$   
 $L = 2,381.67'$   
 $E = 159.15'$



ESTIMATED QUANTITIES	DRAINAGE										
	202	603		604		605		660		660	
REF. SIDE	LOCATION	Ca. Ea.	Type "F" LF	Type "B" LF	Type "F" LF	Sto. I-3B MEDIAN SHOULDER INLET EA.	SHALLOW TOTOI TYPE III OR TOTOI TYPE II LF	SHALLOW BRANCHES EA.	SODDING EA.	REINFORCED SODDING S.Y.	
27P Lt.	584+15 TO 584+08			75		1					
28P Lt.	584+15			71		1	1				
29P Med.	584+15 TO 585+00			85		1					
1-D Rt.	580+00 TO 581+50								125		
1-R Med.	585+80 TO 586+35	2									
1-U Lt.	580+00 TO 582+05						50	203	1		
2-U Med.	580+00 TO 581+90						62	192	1		
3-U Lt.	583+90 TO 590+00		20				50	601	2		
4-U Med.	583+75 TO 590+00		30				63	591	1		
2-D Rt.	581+74									50	
3-D Rt.	583+46									89	
<b>TOTAL</b>		<b>2</b>	<b>50</b>	<b>160</b>	<b>71</b>	<b>2</b>	<b>1</b>	<b>225</b>	<b>1587</b>	<b>125</b>	<b>139</b>

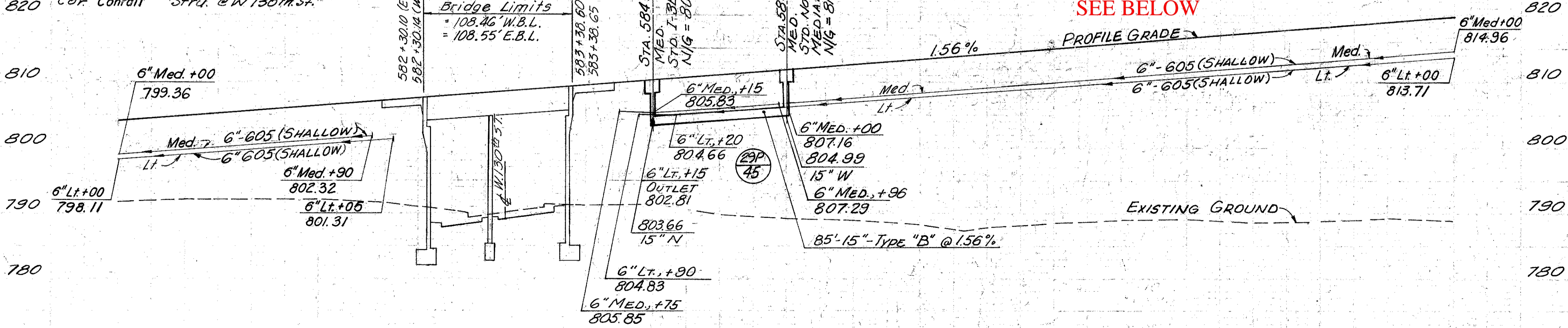
ESTIMATED QUANTITIES	ROADWAY			
	606		606	
REF. SIDE	LOCATION	EA.	EA.	EA.
1-G Lt.	580+00 TO 582+449	1	1	245
2-G Rt.	580+01 TO 581+987	1	1	175
3-G Lt.	583+68.9 TO 587+50	1	1	350
4-G Rt.	583+88.6 TO 584+67	1	1	1325
<b>TOTAL</b>		<b>2</b>	<b>4</b>	<b>907.5</b>

CROSS REFERENCE	
Sheet No.	Item
83, 84, 85	Ramp W-1, W-2, W-3 Pavement Details
86, 87	W-130th Pavement Details
88, 89	W-130th Plan & Profile
312	Structure
41	SUPERELEVATION TABLES

TREE REMOVAL  
580+00 TO 590+00  
SIZE No.  
18" 1

TBM Elev. 793.21 # 63  
S.E. Anchor Bolt in Name Plate  
Built By King Bridge Co. N.E.  
Cor. Cornell Str. @ W 130th St.

Bridge Limits  
= 108.46' W.B.L.  
= 108.55' E.B.L.



Excavation	409	C.Y.
Embankment	139,722	C.Y.
Seeding	9,524	S.Y.

**PROPOSED STRUCTURE - NO CUY-80-1054**  
TYPE: Continuous steel beam with reinforced concrete deck and substructure.  
SPANS: 47.141' & 56.611' c/c Brg. E.B.L. along & I-80  
ROADWAY: 14'-8" f/f PARAPETS OF BR-1 (MOD.) RAILINGS WITH CONCRETE BARRIER MEDIAN  
LOADING: CF-2000 (1957), adequate for AASHTO alternate loading  
WEARING SURFACE: 1 1/4" LATEX MODIFIED CONCRETE  
SKEW: 17'-13"-17" and 20'-12"-55" left forward with respect to Reference Chord.  
ALIGNMENT: 1'-15'-00" Curve left.  
APPROACH SLABS: A5-1-81' (30'-0" long)  
SUPERELEVATION: 0.030 ft. per ft.

580 581 582 583 584 585 586 587 588 589 590

580+00 590+00