

SLM 11.80, 60"
SEE BELOW

SLM 11.96, 15"
SEE SHEET 139

CLYDE COUNTY
480-10.39
SLM 11.96, 60"
SEE BELOW

CALC. BY WAM DATE 3/75
CHKD. BY EJK DATE 3/75

CFN 1974308
SLM 11.96, 15"
SEE SHEET 139

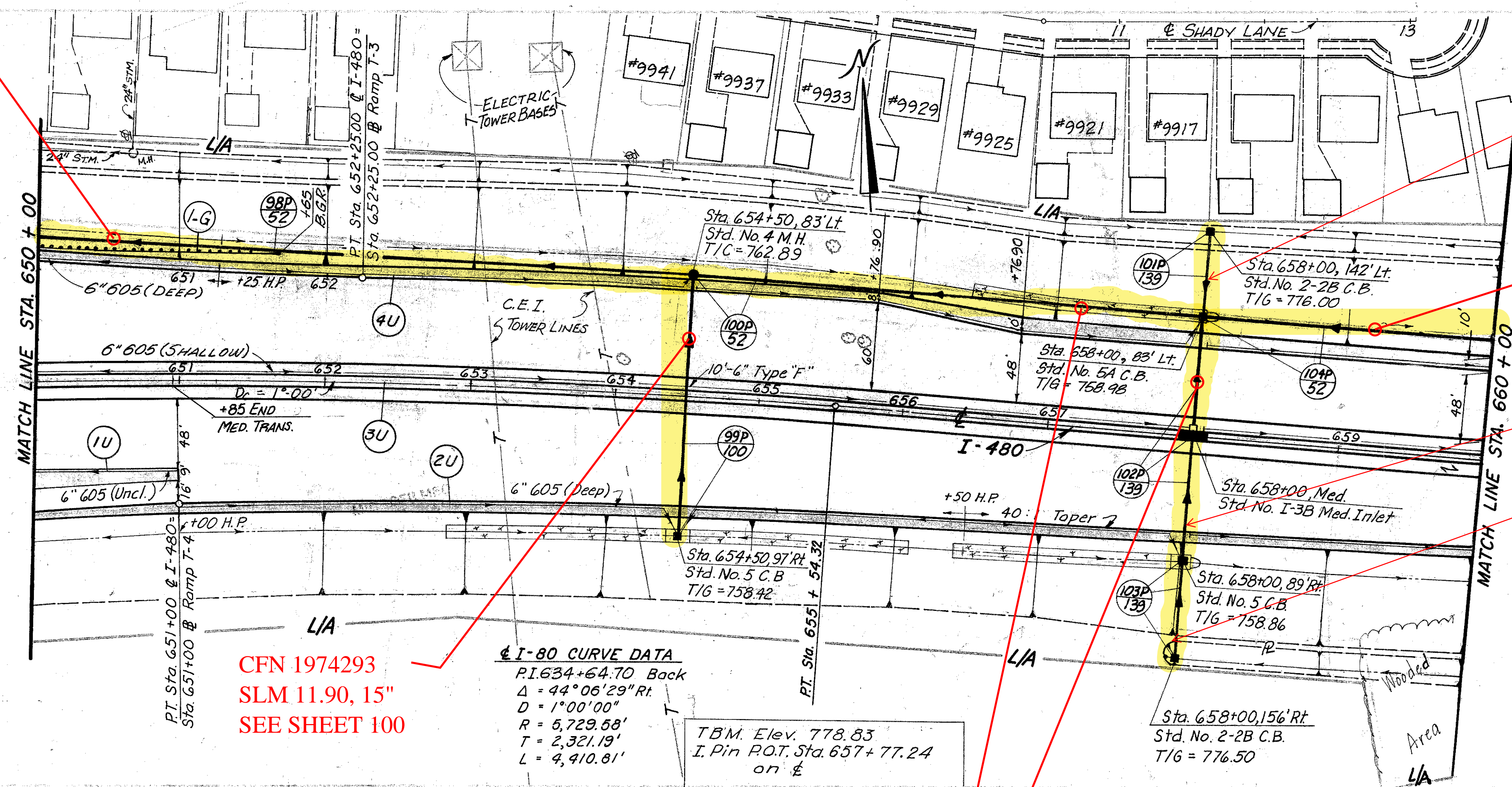
CROSS REFERENCE

Sht. No.	Item
90	Ramp T-3 Pavement Detail
91	Ramp T-4 Pavement Detail
43	Superelevation Table

TREE REMOVAL
650+00 to 660+00

Size	N ₂
18"	19
30"	5

ROADWAY	606		660		605		604		603		ESTIMATED QUANTITIES
	Item	EA.	EA.	EA.	EA.	EA.	EA.	EA.	EA.		
606	Anchor Assembly Type A										1
	Guard Rail Type 5										
660	Sodding		250		125	125					500
	Unclassified	6"			100						100
	Deep	6"			891						891
605	Shallow	6"			973						973
	Std. No. 5-A C.B.										1
604	Std. No. 4 M.H.										1
	Std. No. I-3B MEDIAN INLET										1
603	Std. No. 5 C.B.										2
	Std. No. 2-2B C.B.										2
603	TYPE "C"	60"	450								1000
	TYPE "B"	15"	180								352
603	TYPE "F"	15"	63								135
	TYPE "F"	6"	72								70
TOTAL											1775

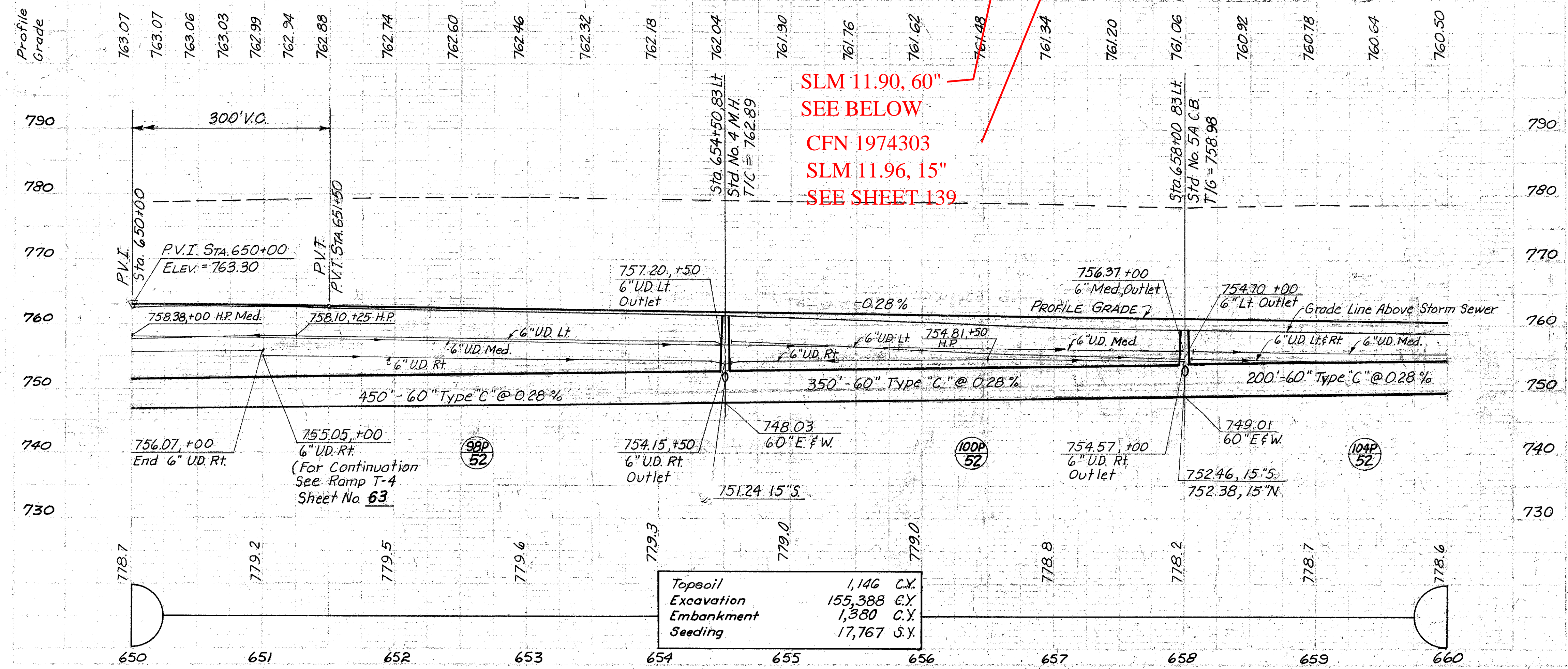


CFN 1974293
SLM 11.90, 15"
SEE SHEET 100

I-80 CURVE DATA
P.I. 634+64.70 Back
 $\Delta = 44^\circ 06' 29" R$
 $D = 1^\circ 00' 00"$
 $R = 5,729.58'$
 $T = 2,321.19'$
 $L = 4,410.81'$

T.B.M. Elev. 778.83
I. Pin P.O.T. Sta. 657+77.24 on ϵ

SLM 11.90, 60"
SEE BELOW
CFN 1974303
SLM 11.96, 15"
SEE SHEET 139



Topsail	1,146	C.Y.
Excavation	155,388	C.Y.
Embankment	1,380	C.Y.
Seeding	17,767	S.Y.