

FOR DETAILS ON STRUCTURE NO. CUY-71-6.38
SEE SHEETS 283 TO 300

FOR PROFILE OF STORM SEWER
D-4, D-5 SEE SHEET 184

FOR PLAN & PROFILE
ON RAMP "E" SEE SHEET 39
FOR PLAN & PROFILE
ON RAMP "F" SEE SHEET 40

FOR PAVEMENT DETAIL SHEETS
SEE SHEETS 166 AND 167

FED. RD. DIVISION	STATE	PROJECT	FISCAL YEAR
2	OHIO		

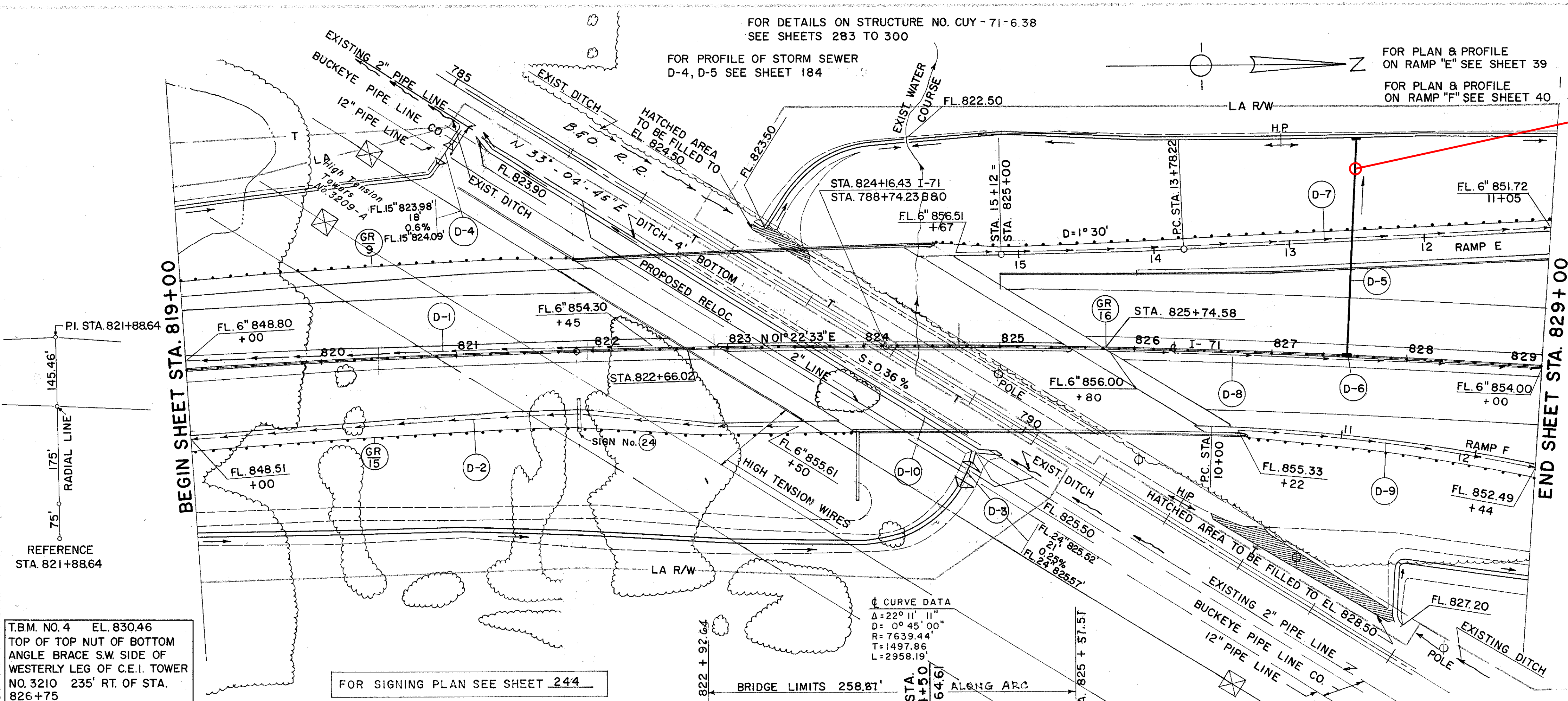
27
353

CUYAHOGA COUNTY
CUY-71-5.72

CFN 1972271
SLM 6.47, 12"
SEE SHEET 184

ROADWAY				
REF NO.	STATION	SIDE	STEEL BEAM (DEEP)	LIN. FT.
	FROM	TO	STANDARD	BARRIER
GR-9	819+00	821+94	LT.	296.5
GR-15	819+00	823+93	RT.	488.5
GR-16	819+00	829+00	M.	741.19
				LESS STRUCTURE CUY-71-6.88 258.87'
TOTAL				785
				741.19

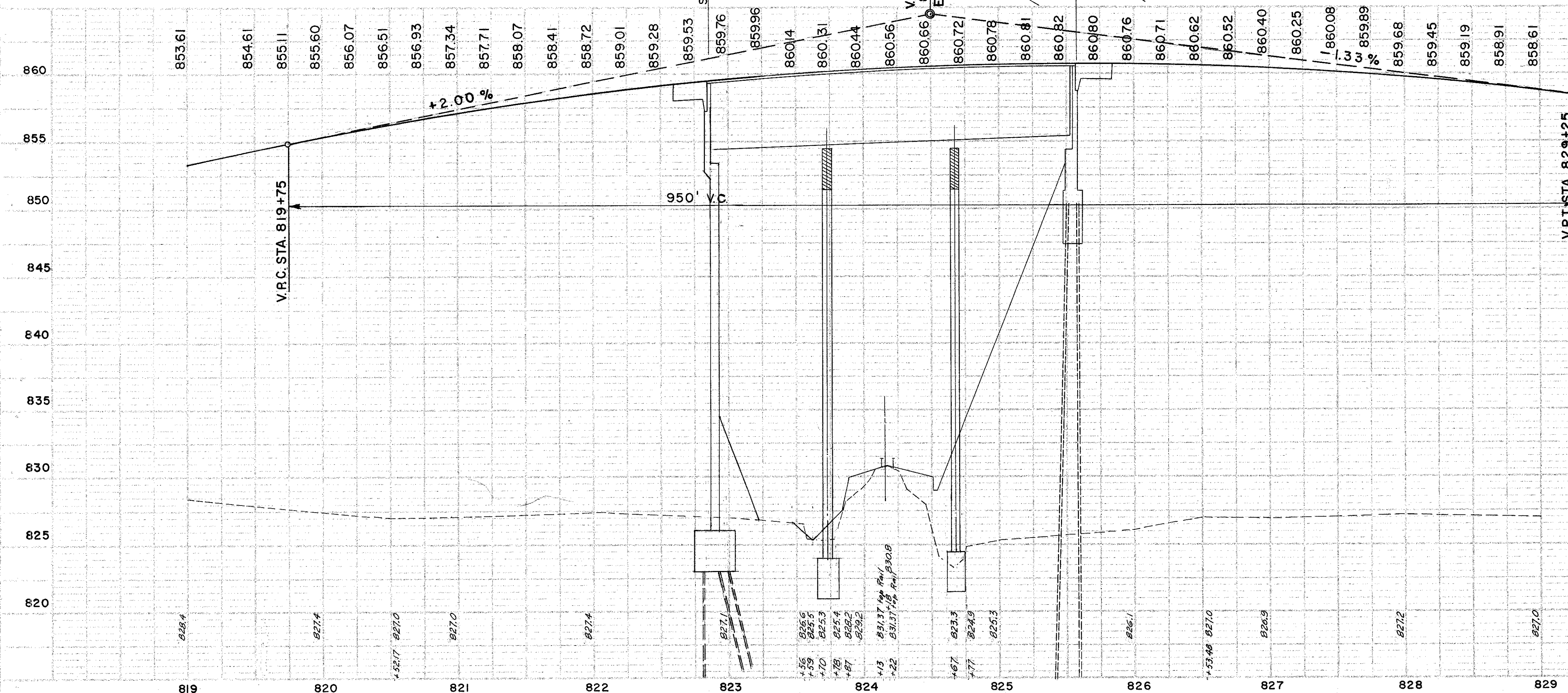
DRAINAGE												
REF NO.	STATION	SIDE	I-1				I-5	I-8	I-2	I-1	L-10	E-3
			6" PIPE CLASS I-3 SHALLOW	6" PIPE CLASS F-4 SHALLOW	12" PIPE CLASS J-1	12" PIPE CLASS F-4						
FROM		TO		LIN. FT.		EACH	EACH	C.Y.	LIN. FT.	S.Y.	C.Y.	
D-1	819+00	822+45	LT.	345								
D-2	819+00	823+50	RT.	450								
D-3	789+73	789+76	RT.							24		
D-4	785+20		LT.							18		
D-5	827+56		DITCH		92	48	2	0.23				
D-6	827+56		LT.									
D-7	824+67	829+00	LT.	423	10							
D-8	825+80	829+00	LT.	320								
D-9	10+22	12+44	RT.	222								
D-10	785+30	789+94	B&O								230	
TOTAL				1760	10	92	48	2	1	0.23	18	24
												230



T.B.M. NO. 4 EL. 830.46
TOP OF TOP NUT OF BOTTOM
ANGLE BRACE S.W. SIDE OF
WESTERLY LEG OF C.E.I. TOWER
NO. 3210 235' RT. OF STA.
826+75

FOR SIGNING PLAN SEE SHEET 244

CURVE DATA
Δ = 22° 11' 11"
D = 0° 45' 00"
R = 7639.44'
T = 1497.86'
L = 2958.19'



STRUCTURE NO. CUY-71-0638
TYPE: CONTINUOUS WELDED PLATE GIRDERS WITH
REINFORCED CONCRETE DECK & SUBSTRUCTURE
SPANS: 77'-0" - 96'-0" - 77'-0" % BRGS.
ROADWAY: S.B. BRIDGE AS SHOWN
N.B. BRIDGE 64'-0" f/f OF PARAPETS
LOAD FREQUENCY: C.F. 2000 [57] ADEQUATE FOR
SKEW: 58° 17' 48" AASHTO ALTERNATE LOADING
WEARING SURFACE: 1" MONOLITHIC CONCRETE
APPROACH SLAB: AS-1-54 [25' LONG]
ALIGNMENT: 0° 45' CURVE RT.
SUPERELEVATION: 0.018'/FT.

PLAN & PROFILE - STA. 819+00 TO STA. 829+00