

BAGLEY ROAD  
SLM 6.68=MM 235.39

FED. RD. DIVISION 2	STATE OHIO	PROJECT	FISCAL YEAR
------------------------	---------------	---------	-------------

29  
353

CUYAHOGA COUNTY  
CUY-71-5.72

FOR DETAILS ON STRUCTURE NO. CUY.-I-71-6.68  
SEE SHEETS 301 TO 310

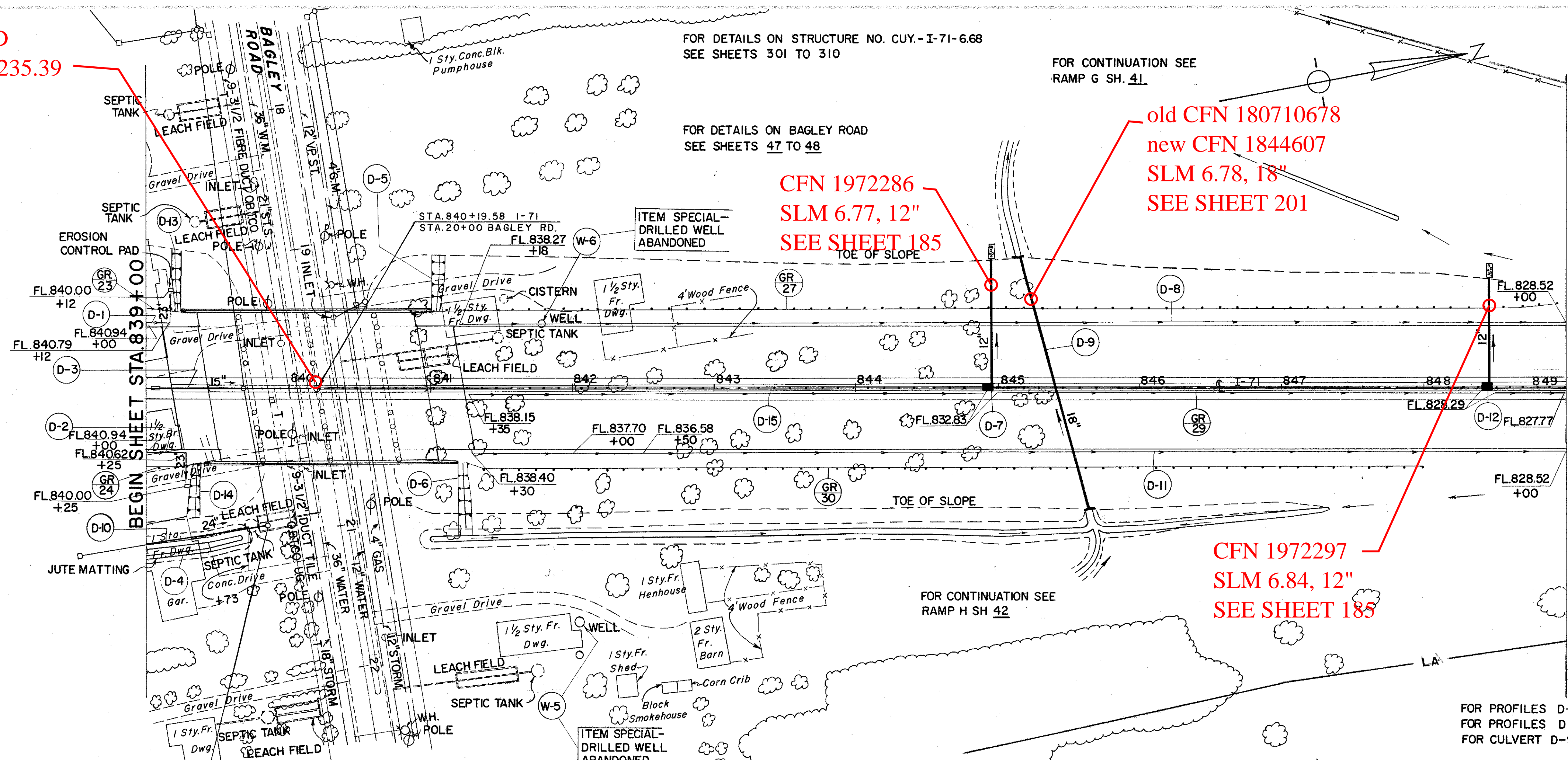
FOR CONTINUATION SEE  
RAMP G SH. 41

FOR DETAILS ON BAGLEY ROAD  
SEE SHEETS 47 TO 48

old CFN 180710678  
new CFN 1844607  
SLM 6.78, 18"  
SEE SHEET 201

CFN 1972286  
SLM 6.77, 12"  
SEE SHEET 185

CFN 1972297  
SLM 6.84, 12"  
SEE SHEET 185

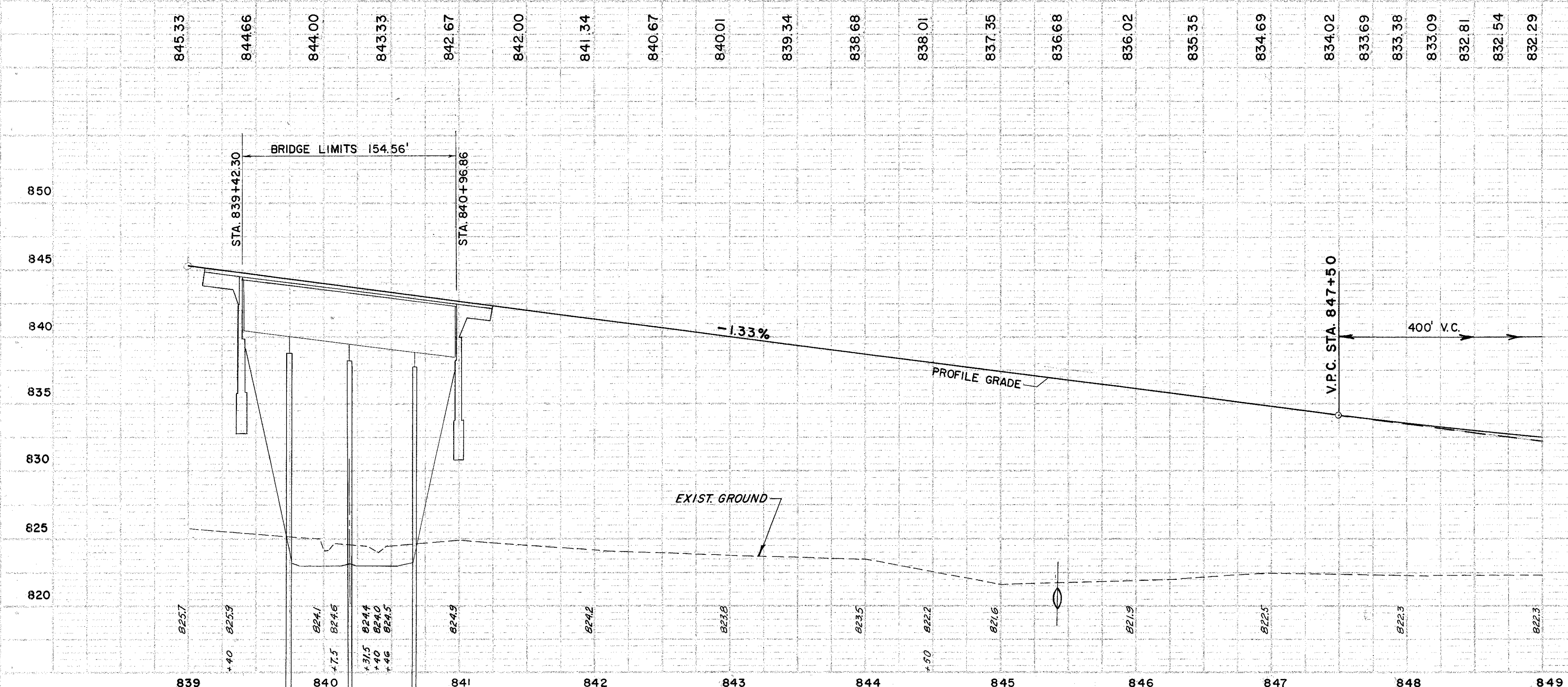


REF. NO.	STATION	SIDE	DRAINAGE																	
			6" PIPE, CLASS I-3 SHALLOW	6" PIPE, CLASS F-4 SHALLOW	12" PIPE, CLASS J-1	12" PIPE, CLASS F-4	15" PIPE, CLASS F-4	18" PIPE, CLASS A-1 SEC. M-6.6(c)	24" PIPE, CLASS E-1	MASONRY	6" 90° BENDS CLASS I-3	12" 25° BENDS CLASS F-4	STD. 2'-A-8 PAVED SHOULDER INLET	MOD. 2'-A-8 PAVED SHOULDER INLET	DUMPED ROCK CHANNEL PROT.	SODDING	JUTE MATTING	CHANNEL EXCAV.	DRILLED WELL ABANDONED	
D-1	839+00	839+12	LT.	25	10															
D-2	839+00	839+25	RT.	38	10															
D-3	839+12	839+68	C.					55												
D-4	839+00	839+73	RT.																	
D-12	848+45	DITCH	LT.			78				23										
D-15	841+35	849+00	MD.	849																
D-7	844+85	DITCH	LT.			60	28			23			2							
D-8	841+18	849+00	LT.	772	20															
D-9	845+40		C.					187		36										
D-10	839+00	839+85	RT.							85										
D-11	841+30	849+00	RT.	710	20															
D-14	839+30		RT.																	
TOTALS				2394	60	138	28	55	187	85	406	2	2	1	2	46	11	61	4	2

REF. NO.	STATION	SIDE	SODDING, SPECIAL BEAM & SLOPE PROT.	L-10
D-5	841+10		LT.	40
D-6	841+25		RT.	50
D-13	839+15		LT.	50
D-14	839+30		RT.	40
TOTAL				180

REF. NO.	STATION	SIDE	GUARD RAILS		STEEL BEAM (DEEP)		
			FROM	TO	STANDARD	BARRIER	
GR-23	839+00	839+23	LT.		23		
GR-24	839+00	839+40	RT.		40		
GR-27	841+00	849+00	LT.		800		
GR-29	839+00	849+00					
LESS STRUCTURE CUY-71-6.68-154.56 M 845.5							
GR-30	842+18.5	848+06	RT.		587.5		
TOTAL						1450.5	845.5

FOR PROFILES D-3 & D-10 SEE SH. 193  
FOR PROFILES D-7 & D-12 SEE SH. 185  
FOR CULVERT D-9 DETAILS SEE SH. 201



**STRUCTURE NO. CUY-71-0668**  
 TYPE: CONTINUOUS STEEL BEAM WITH REINFORCED CONCRETE DECK AND SUBSTRUCTURE  
 SPANS: 31'-0" — 44'-0" — 31'-0"  
 ROADWAY: 108'-0" F/F OF PARAPETS 1'-0" CURBS  
 LOAD FREQUENCY: C.F. = 2000 (57), ADEQUATE FOR A.A.S.H.O. ALTERNATE LOADING  
 SKEW: 9°07'38"  
 WEARING SURFACE: 1" MONOLITHIC CONCRETE  
 APPROACH SLAB: AS-1-54(25' LONG)  
 ALIGNMENT: TANGENT

PLAN & PROFILE - STA. 839+00 TO STA. 849+00