

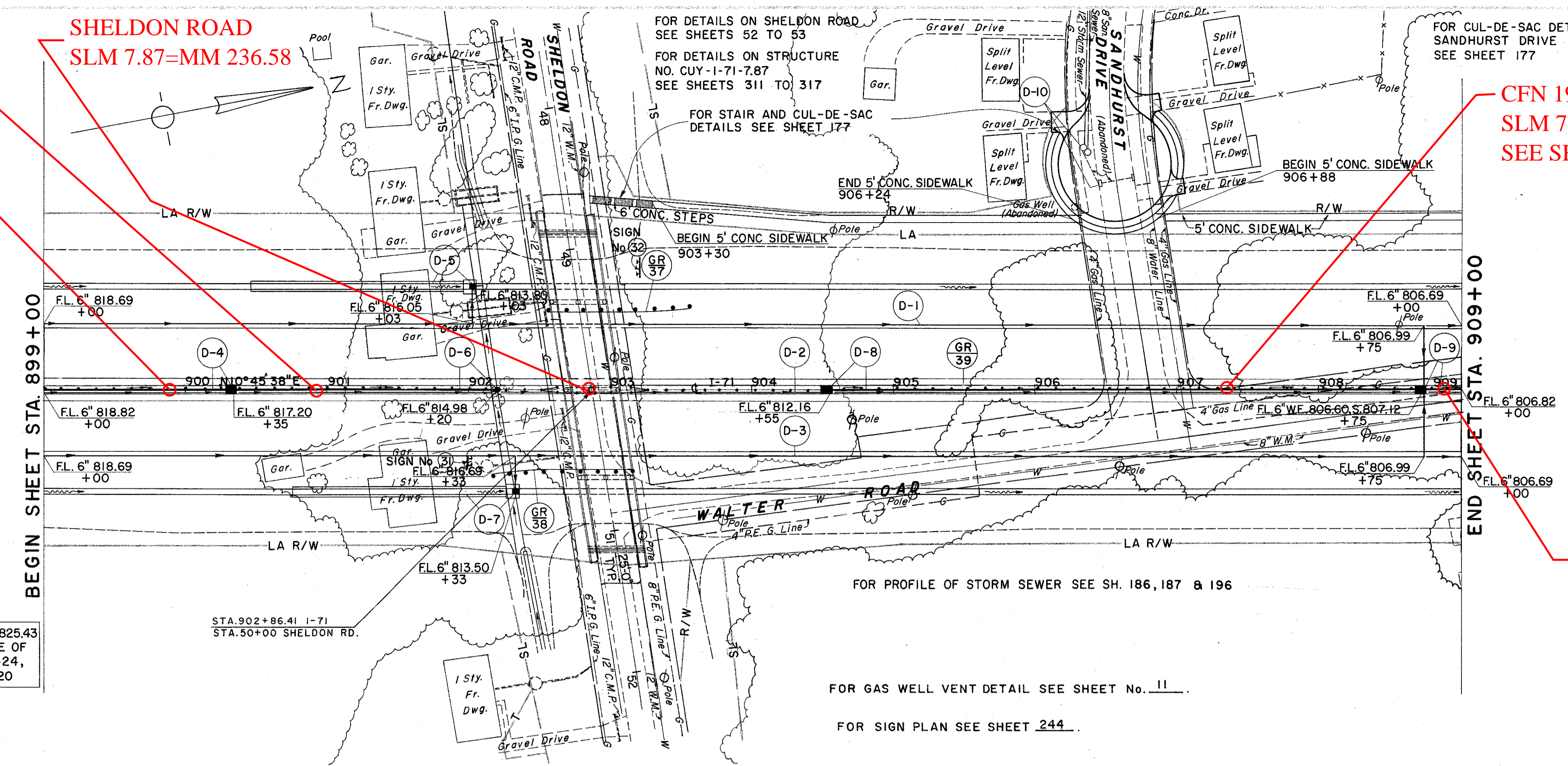
CFN 1972281
SLM 7.85, 12"
SEE SHEET 186

CFN 1972285
SLM 7.81, 12"
SEE SHEET 186

SHELDON ROAD
SLM 7.87=MM 236.58

CFN 1972283
SLM 7.97, 12"
SEE SHEET 187

CFN 1972262
SLM 8.05, 12"
SEE SHEET 187



(D) DRAINAGE

REF. NO.	STATION		SIDE	I-1				I-5		I-8		I-16		L-120
	FROM	TO		CLASS I-3	CLASS J-1	CLASS F-4	CLASS E-1	CLASS I-3	STD. MH NO. 1	STD. CB NO. 5	MOD. 2-A-8 PAVED SHUR INLET	MH ADJUSTED TO GRADE	CB	
D-1	899+00	909+00	LT.	1008	36	30		2						
D-2	899+00	909+00	CL	960		40								
D-3	899+00	909+00	RT.	1008	36			2						
D-4	899+00	900+35	CL											
D-5	900+46	902+10	LT.											125
D-6	900+35	902+20	CL											
D-7	900+76	902+33	RT.											125
D-8	904+55	908+75	CL											
D-9	908+75	909+00	CL											
D-10	SANDHURST DR. 8+28	8+51	LT. & RT.										2	2
TOTAL				2976	72	70	771	4	1	2	3	2	2	250

ROADWAY

REF. NO.	STATION		SIDE	STEEL BEAM (DEEP)	
	FROM	TO		STANDARD	BARRIER
GR-37	902+57.5	903+57.5	LT.	100	
GR-38	902+15	903+15	RT.	100	
GR-39	899+00	909+00	M		1000
TOTAL				200	1000

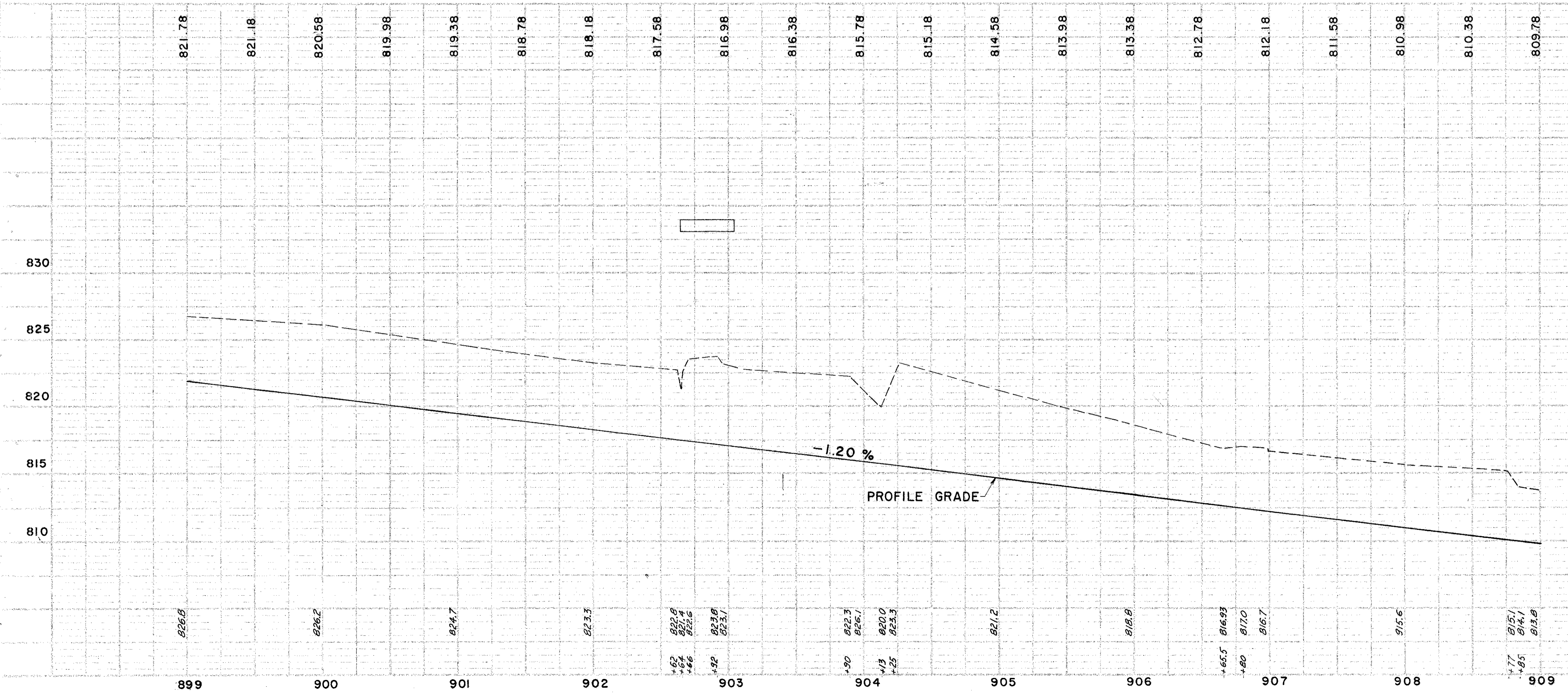
T.B.M. NO. 12 B.M. "C" EL. 825.43
R.R. SPIKE ON WEST SIDE OF
C.E.I. CO. POLE NO. 121424,
105' RT. OF STA. 903+20

STA. 902+86.41 I-71
STA. 50+00 SHELDON RD.

FOR PROFILE OF STORM SEWER SEE SH. 186, 187 & 196

FOR GAS WELL VENT DETAIL SEE SHEET No. 11

FOR SIGN PLAN SEE SHEET 244



STRUCTURE NO. CUY-71-0787

TYPE: CONTINUOUS STEEL BEAM WITH REINFORCED CONCRETE DECK AND SUBSTRUCTURE

SPANS: 50'-0" - 62'-6" - 62'-6" - 50'-0" C/C BRGS.

ROADWAY: 28'-0" F.F. 5'-0" SIDEWALKS

LOAD FREQUENCY: CF=400

SKEW: 8°57'07"

WEARING SURFACE: 1" MONOLITHIC CONCRETE

APPROACH SLAB: 25' LONG

ALIGNMENT: TANGENT

PLAN & PROFILE - STA. 899+00 TO STA. 909+00