

NOTE: THE PROPOSED DITCHES TO MEET THOSE OF ADJOINING PROJECT

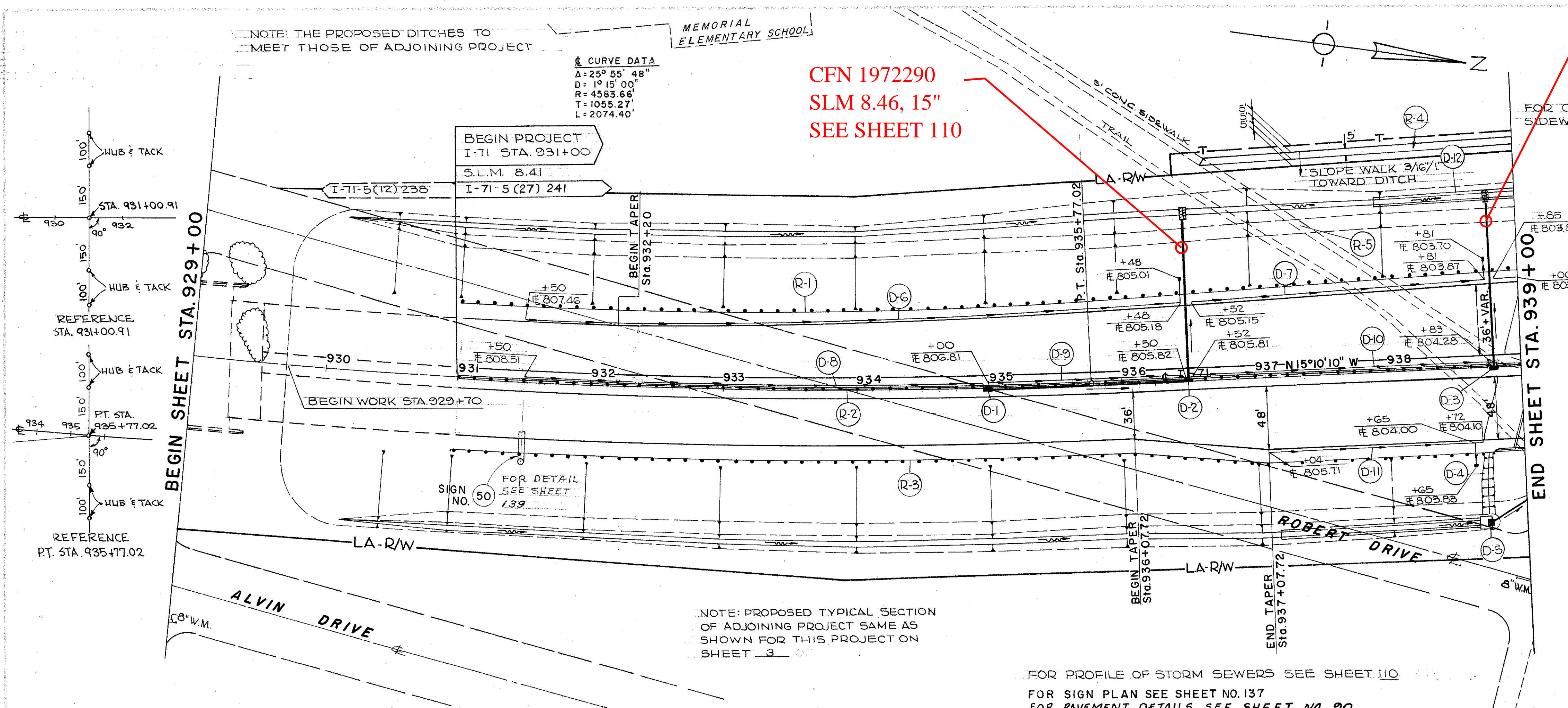
CURVE DATA
 $\Delta = 25^\circ 55' 48''$
 $D = 1^\circ 15' 00''$
 $R = 4583.66'$
 $T = 1055.27'$
 $L = 2074.40'$

CFN 1972290
 SLM 8.46, 15"
 SEE SHEET 110

CFN 1972296
 SLM 8.49, 15"
 SEE SHEET 110

FED. RD. DIVISION	STATE	PROJECT	FISCAL YEAR
2	OHIO		19230

CUYAHOGA COUNTY
 CUY - 71-8.41



FOR CONTINUATION OF SIDEWALK SEE SHEET 20

(D) DRAINAGE

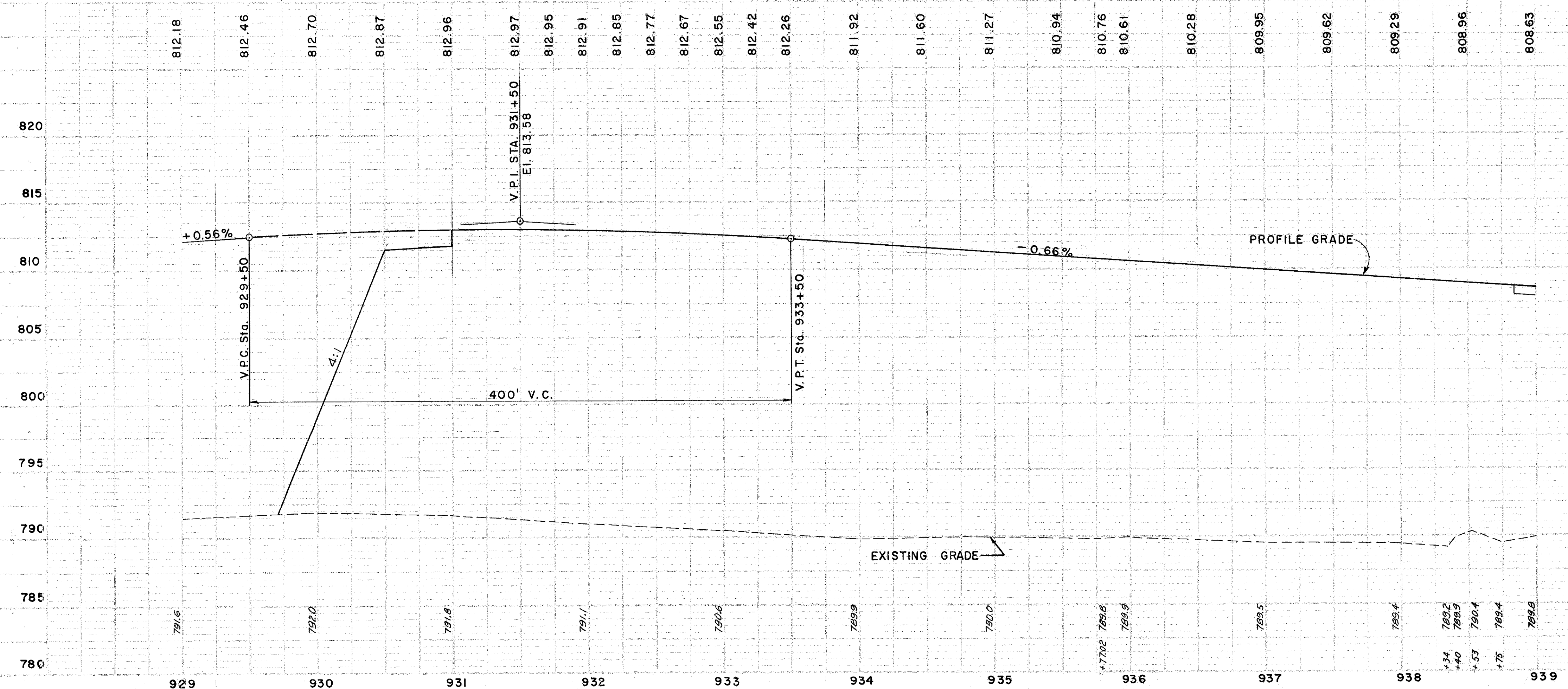
REF. NO.	STATION		SIDE	I-1			I-2	I-5	I-8	I-10	L-10	
	FROM	TO		12" PIPE CLASS E-1	15" PIPE CLASS J-1	15" PIPE CLASS F-4						PIPE SPECIALS 15" 25' BENDS CL. F-4
				LIN. FT.	C.Y.	EA.	EA.	C.Y.	S.Y.	S.Y.		
D-1	935+00	936+50	LT	150					1			
D-2	936+50	DITCH 120' LT	LT	68	58	0.26	2			2	2.0	
D-3	938+83	DITCH 124' LT	LT	72	56	0.26	2			2	2.0	
TOTAL				150	140	114	0.52	4		1	4	4.0

REF. NO.	STATION		SIDE	I-1			I-5		I-8	L-120	L-10	
	FROM	TO		6" PIPE CLASS I-3	6" PIPE CLASS F-4	8" PIPE CL. F-4	18" PIPE CL. E-1	PIPE SPECIALS 6" 90° BENDS CL. I-3				6" TEE CL. I-3
				LIN. FT.	EA.	EA.	EA.	S.Y.	S.Y.			
D-4	938+72		RT								42	
D-5	938+72	939+00	RT			32			1	125		
D-6	931+50	936+48	LT	505	10							
D-7	936+52	939+00	LT	251	10							
D-8	931+50	935+00	LT	340	10							
D-9	935+00	936+50	LT	140	10							
D-10	936+52	938+83	LT	221	10							
D-11	937+04	938+72	RT	175	10							
D-12	937+03	939+00	LT							86		
TOTAL				1632	30	30	32	2	1	1	211	42

(R) ROADWAY

REF. NO.	STATION		SIDE	I-15		I-13	E-8
	FROM	TO		GUARD RAIL STEEL BEAM (DEEP)	STANDARD BARRIER		
				LIN. FT.	SQ. FT.	SQ. FT.	
R-1	931+00	939+00	LT	800			
R-2	931+00	939+00	LT		800		
R-3	931+00	938+77	RT	777		1160	
R-4	936+68	939+00	LT				1445
R-5	936+65	939+00	LT				1445
TOTALS				1577	800	1160	1445

FOR PROFILE OF STORM SEWERS SEE SHEET 110
 FOR SIGN PLAN SEE SHEET NO. 137
 FOR PAVEMENT DETAILS SEE SHEET NO. 90



PLAN & PROFILE - STA. 929+00 TO STA. 939+00