

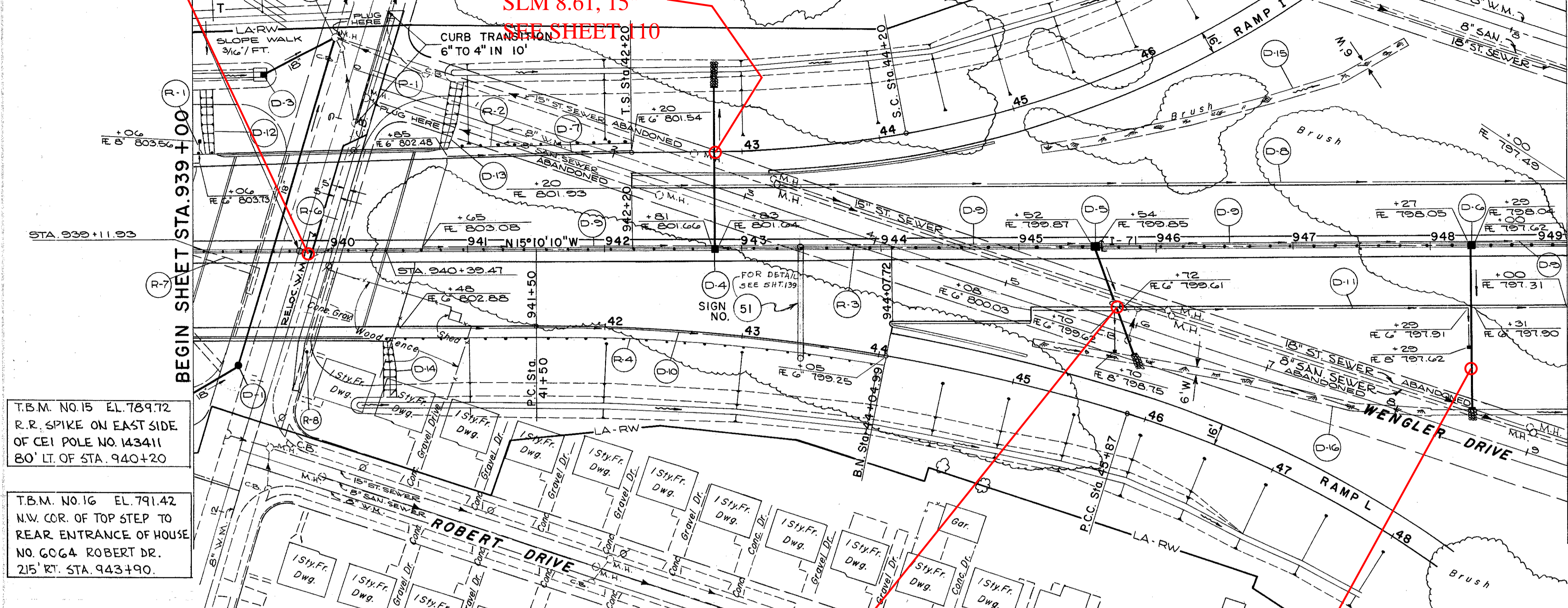
SYLVIA DRIVE  
SLM 8.56=MM 237.27

Sta. 939+75.70 I-71  
Sta. 10+00 SYLVIA DR.

FOR SIGN PLAN SEE SHEET NO.137  
FOR DETAILS ON STRUCTURE  
CUY-71-0857 SEE SHEETS 166 TO 177

FOR PROFILE OF STORM SEWERS SEE SHEET 110  
FOR PLAN AND PROFILE OF RAMP 'I' SEE SHEET 26  
FOR PLAN AND PROFILE OF RAMP 'L' SEE SHEET 27  
FOR PAVEMENT DETAILS SEE SHEETS 89 & 90  
FOR RELOCATED WATER MAIN SEE WATER PLANS

FED. RD. DIVISION 2 STATE PROJECT CUYAHOGA COUNTY CUY-71-841 FISCAL YEAR 20230



T.B.M. NO.15 EL. 789.72  
R.R. SPIKE ON EAST SIDE  
OF CEI POLE NO. 143411  
80' LT. OF STA. 940+20

T.B.M. NO.16 EL. 791.42  
NW. COR. OF TOP STEP TO  
REAR ENTRANCE OF HOUSE  
NO. 6064 ROBERT DR.  
215' RT. STA. 943+90.

CFN 1972287  
SLM 8.61, 15"  
SEE SHEET 110

CFN 1972261  
SLM 8.66, 15"  
SEE SHEET 110

CFN 1972254  
SLM 8.72, 15"  
SEE SHEET 110

Ⓧ DRAINAGE

REF. NO.	STATION		SIDE	I-1			I-2	I-5	I-8		I-10	L-10	L-120	
	FROM	TO		15" PIPE CLASS J-1	15" PIPE CLASS F-4	18" PIPE CLASS E-1	MASONRY PIPE SPL. 15" 25° BENDS CL.F.4	MOD-2-A-6 PAVED SHOULDER INLET	STD. NO. 5 CATCH BASIN	STD. NO. 1 MANHOLE	DUMPED ROCK CHANNEL PROT.	SOD-DING	JUTE MATTING	
				LIN. FT.			CY.	EA.	EACH		C.Y.	S.Y.	S.Y.	
D-1	10+93 (SYLVIA DR.)		19'RT.			39								
D-2	10+93 SYLVIA DR.	8+43 SYLVIA DR.	19'RT.			250								
D-3	939+00	940+05	LT.			59								
D-4	942+81	DITCH	118'LT.	88	34		.26	2				4	2	
D-5	945+55	945+85	85'RT.	84			.26					1.8	2	
D-6	948+30	DITCH	121'RT.	65	58		.26	2				1.8	2	
TOTAL				237	92	348	0.78	4	3	1	1	7.6	6	38

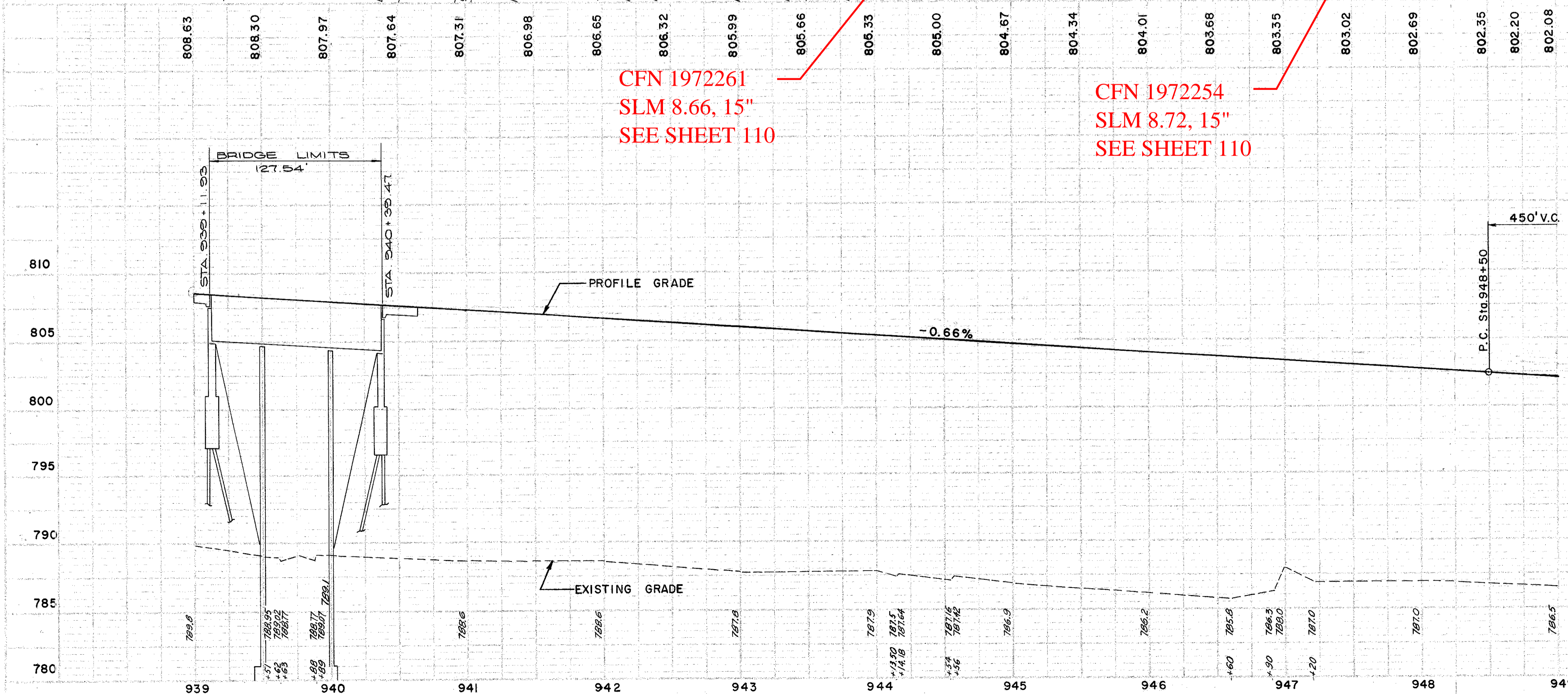
END SHEET STA. 949+00

REF. NO.	STATION		SIDE	I-1		I-5	L-10	L-10	
	FROM	TO		6" PIPE CLASS T-3	6" PIPE CLASS F-4	8" PIPE CLASS F-4	PIPE SP. L.S. 6" 90° BENDS	SPEC. BERM B. SLOPE PROT.	SODDING
				LIN. FT.		EA.	S.Y.	S.Y.	
D-7	939+00	942+20	LT.	148		10	1		
D-8	942+20	949+00	LT.	680					
D-9	940+65	949+00	℄	799	30				
D-10	940+48	44+05	RT.	357					
D-11	945+08	949+00	RT.	427		20	2		
D-12	939+15		LT.					40	
D-13	940+82		LT.					45	
D-14	940+40		RT.					36	
D-15	945+15	947+85	LT.					187	
D-16	945+10	948+00	RT.					197	
TOTAL				2411	30	30	3	121	384

Ⓡ ROADWAY

REF. NO.	STATION	SIDE	I-15 GUARD RAIL		I-13 SQ.FT.	I-8 SQ.FT.	I-12 CURB TYPE 6 LIN. FT.	
			STEEL BEAM (DEEP) STANDARD	BARRIER				
R-1	939+00	939+20	LT.	20				
R-2	940+76	942+20	LT.	144				
R-3	939+00	949+00	℄		1000.00			
DEDUCT FOR STRUCTURE				℄	-127.54			
R-4	940+33	944+08		375				
R-5	939+00	940+15	LT.		575			
R-6	SYLVIA 8+15 TO 11+00		LT.		1425			
R-7	939+00	939+49	RT.			320		
R-8	SYLVIA 10+07 TO 11+00		LT.			460		
P-1	SYLVIA 8+15 TO 9+00		LT.				85	
TOTALS				539	872.46	2000	780	85

Ⓟ PAVEMENT



PROPOSED STRUCTURE CUY-71-0857  
TYPE: CONTINUOUS STEEL BEAM WITH REINFORCED CONCRETE DECK AND SUBSTRUCTURE  
SPANS: 35'-10" ~ 51'-2" ~ 35'-10" @ BRGS.  
ROADWAY: VARIES AS SHOWN ON PLANS  
LOAD FREQUENCY: CF 2000 (57) ADEQUATE FOR A.A.S.H.O. ALTERNATE LOADING.  
SKEW: 16°44'38"  
WEARING SURFACE: 1" MONOLITHIC CONCRETE  
APPROACH SLAB: AS-1-54 (25' LONG)  
ALIGNMENT: TANGENT

PLAN & PROFILE - STA. 939+00 TO STA. 949+00