

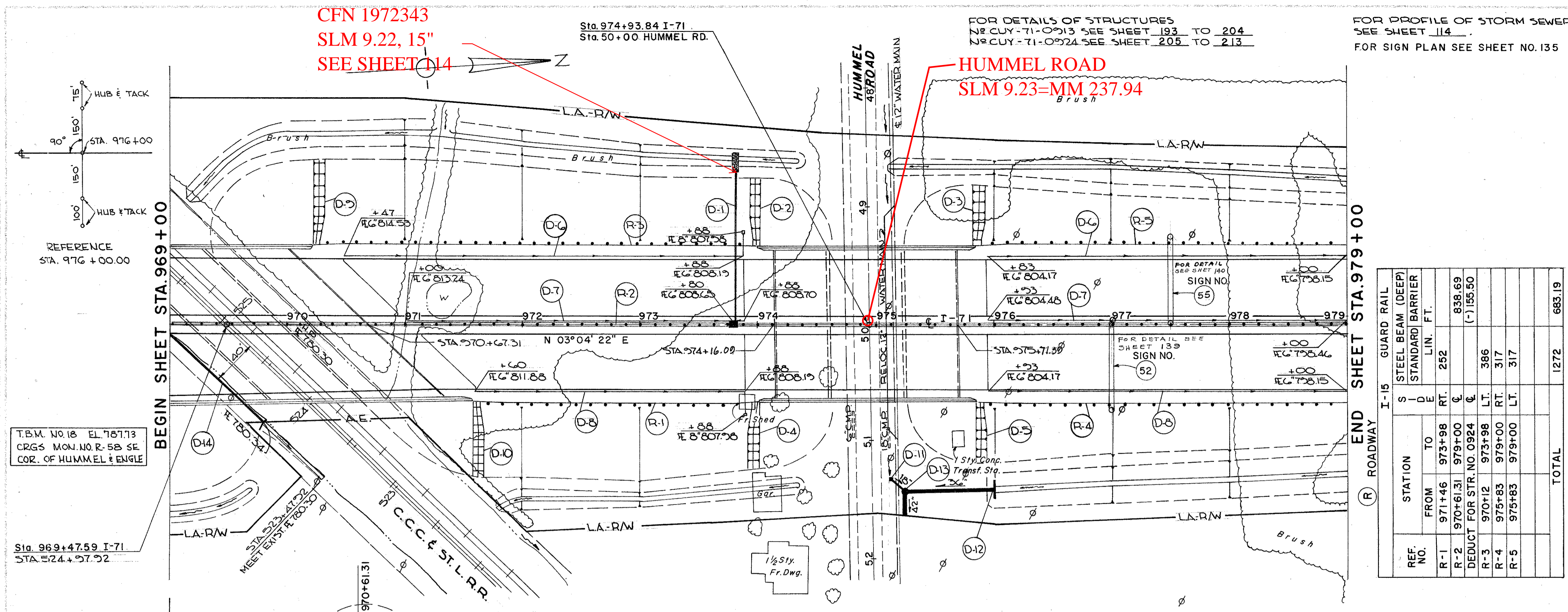
CFN 1972343
SLM 9.22, 15"
SEE SHEET 114

FOR DETAILS OF STRUCTURES
SEE CUY-71-0913 SEE SHEET 193 TO 204
SEE CUY-71-0924 SEE SHEET 205 TO 213

FOR PROFILE OF STORM SEWER
SEE SHEET 114
FOR SIGN PLAN SEE SHEET NO. 135

| | | | |
|------------------------|---------------|---------|--------------------------|
| FED. RD. DIVISION 2 | STATE OHIO | PROJECT | FISCAL YEAR 23 230 |
|------------------------|---------------|---------|--------------------------|

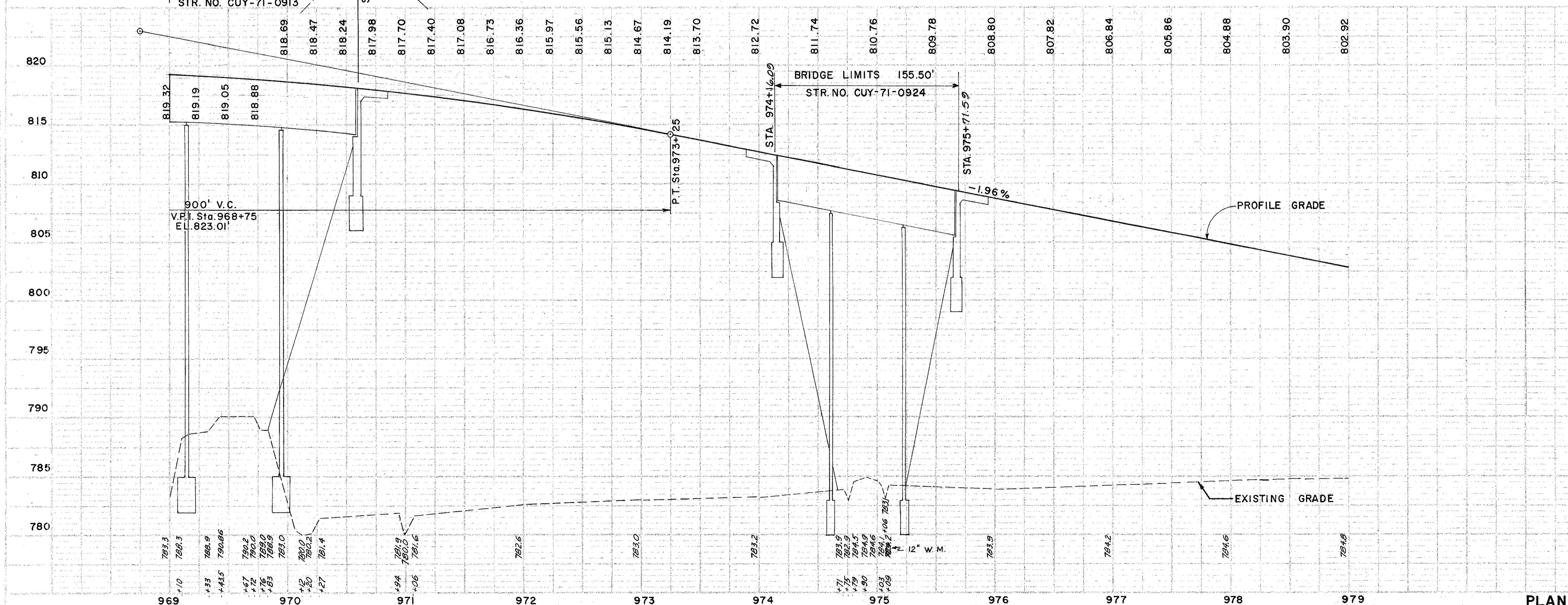
CUYAHOGA COUNTY
CUY-71-841



| REF. NO. | STATION | | S I L E | R.T. | LIN. FT. |
|----------|-----------|--------|------------------|------|-----------|
| | FROM | TO | | | |
| R-1 | 971+46 | 973+98 | RT. | 252 | 838.69 |
| R-2 | 970+61.31 | 979+00 | RT. | 6 | (-1)55.50 |
| R-3 | 970+12 | 973+98 | LT. | 386 | |
| R-4 | 975+83 | 979+00 | LT. | 317 | |
| R-5 | 975+83 | 979+00 | LT. | 317 | |
| TOTAL | | | | 1272 | 683.19 |

DRAINAGE QUANTITIES FOR SHEET 23

| REF. NO. | STATION | | S I D E | E | RT. | LT. | TOTAL |
|----------|---------|--------------------|------------------|---|-----|-----|-------|
| | FROM | TO | | | | | |
| D-1 | 973+80 | 973+98 | LT. | | | | 649 |
| D-2 | 973+98 | 973+87 | LT. | | | | 577 |
| D-3 | 973+87 | 973+98 | RT. | | | | 546 |
| D-4 | 973+98 | 975+87 | RT. | | | | 649 |
| D-5 | 975+87 | 979+00 | LT. | | | | 577 |
| D-6 | 970+47 | 979+00 | LT. | | | | 546 |
| D-7 | 971+00 | 979+00 | M | | | | 577 |
| D-8 | 971+60 | 979+00 | RT. | | | | 546 |
| D-9 | 970+23 | 979+00 | LT. | | | | 577 |
| D-10 | 971+60 | HUMMEL RD 11+45 | LT. | | | | 16 |
| D-11 | 11+32 | 11+45 | LT. | | | | 77 |
| D-12 | 976+00 | 11+43 | LT. | | | | 116 |
| D-13 | 11+43 | 11+63 | LT. | | | | 116 |
| D-14 | 969+00 | 50+88 | RT. | | | | 1772 |
| TOTAL | | | | | | | 1772 |



PROPOSED STRUCTURE NO. CUY-71-0913
 TYPE: CONTINUOUS STEEL BEAM WITH REINFORCED CONCRETE DECK AND SUBSTRUCTURE
 SPANS: 64'-0" - 80'-0" - 64'-0"
 ROADWAY: AS SHOWN
 LOAD FREQUENCY: CF=2000 (57) ADEQUATE FOR A.A.S.H.O. ALTERNATE LOADING
 SKEW: 46°-01'-49"
 WEARING SURFACE: 1" MONOLITHIC CONCRETE
 APPROACH SLAB: AS-1-54 (25' LONG)
 ALIGNMENT: AS SHOWN

PROPOSED STRUCTURE NO. CUY-71-0924
 TYPE: CONTINUOUS STEEL BEAM WITH REINFORCED CONCRETE DECK AND SUBSTRUCTURE
 SPANS: 44'-0" - 63'-0" - 44'-0"
 ROADWAY: 132'-0" F/F OF PARAPET
 LOAD FREQUENCY: CF 2000 (57) ADEQUATE FOR A.A.S.H.O. ALTERNATE LOADING
 SKEW: 0°-00'-00"
 WEARING SURFACE: 1" MONOLITHIC CONCRETE
 APPROACH SLAB: AS-1-54 (25' LONG)
 ALIGNMENT: TANGENT

PLAN & PROFILE - STA. 969+00 TO STA. 979+00