

CUYAHOGA COUNTY
CUY-71-13.68

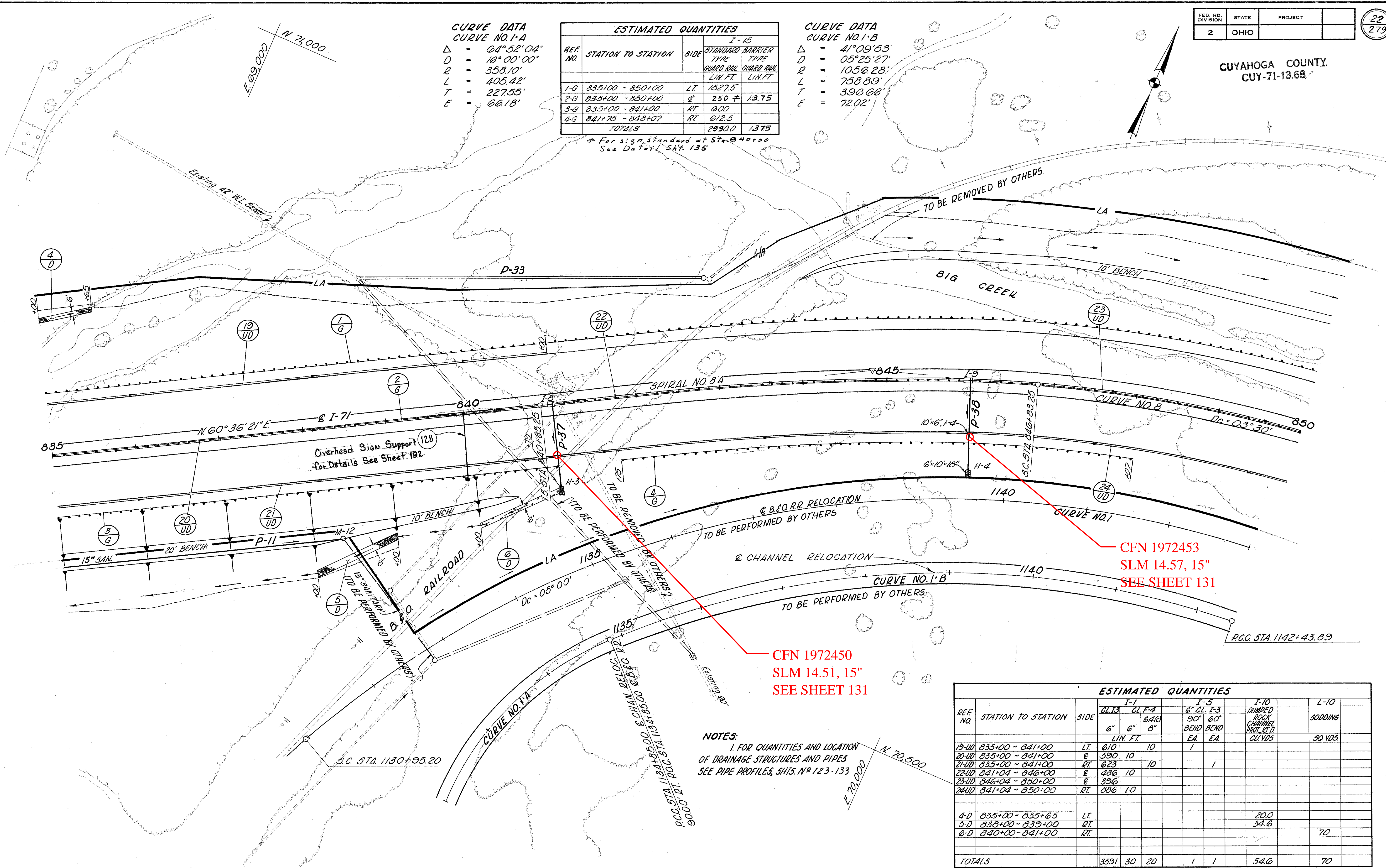
CURVE DATA
CURVE NO. 1-A
 $\Delta = 64^{\circ}52'04"$
 $D = 16^{\circ}00'00"$
 $R = 358.10'$
 $L = 405.42'$
 $T = 227.55'$
 $E = 66.18'$

ESTIMATED QUANTITIES				
REF. NO.	STATION TO STATION	SIDE	I-15	
			STANDARD TYPE	BARRIER TYPE
			GUARD RAIL LIN. FT.	GUARD RAIL LIN. FT.
1-G	835+00 - 850+00	LT	1527.5	
2-G	835+00 - 850+00	E	250	13.75
3-G	835+00 - 841+00	RT	600	
4-G	841+75 - 848+07	RT	012.5	
TOTALS			2980.0	13.75

CURVE DATA
CURVE NO. 1-B
 $\Delta = 41^{\circ}09'53"$
 $D = 05^{\circ}25'27"$
 $R = 1056.28'$
 $L = 758.89'$
 $T = 396.66'$
 $E = 72.02'$

* For sign standard at Sta. 840+00
See Detail Sht. 135

DESCRIPTION	QUANTITIES
PAVEMENT	
RAILROAD	
CHANNEL	
PIPES	
STRUCTURES	
OTHERS	



CFN 1972453
SLM 14.57, 15"
SEE SHEET 131

CFN 1972450
SLM 14.51, 15"
SEE SHEET 131

NOTES:
1. FOR QUANTITIES AND LOCATION OF DRAINAGE STRUCTURES AND PIPES SEE PIPE PROFILES, SHTS. N^o 123-133

REF. NO.	STATION TO STATION	SIDE	I-1		I-5		I-10 DUMPED ROCK CHANNEL PROTECT. CU YDS	L-10 SODDING SQ. YDS.	
			6" LIN. FT.	8" LIN. FT.	6" CL. I-3 BEND	90° 60" BEND			
19-UD	835+00 ~ 841+00	LT	610	10					
20-UD	835+00 ~ 841+00	E	590	10					
21-UD	835+00 ~ 841+00	RT	623	10					
22-UD	841+04 ~ 846+00	E	486	10					
23-UD	846+04 ~ 850+00	E	396						
24-UD	841+04 ~ 850+00	RT	886	10					
4-D	835+00 ~ 835+65	LT						200	
5-D	838+00 ~ 839+00	RT						34.6	
6-D	840+00 ~ 841+00	RT						70	
TOTALS			3591	30	20	1	1	546	70