

BROOKPARK ROAD
SLM 9.94 = MM 238.65

SLM 10.00, 36"
SEE SHEET 71

SLM 10.03, 30"
SEE SHEET 69

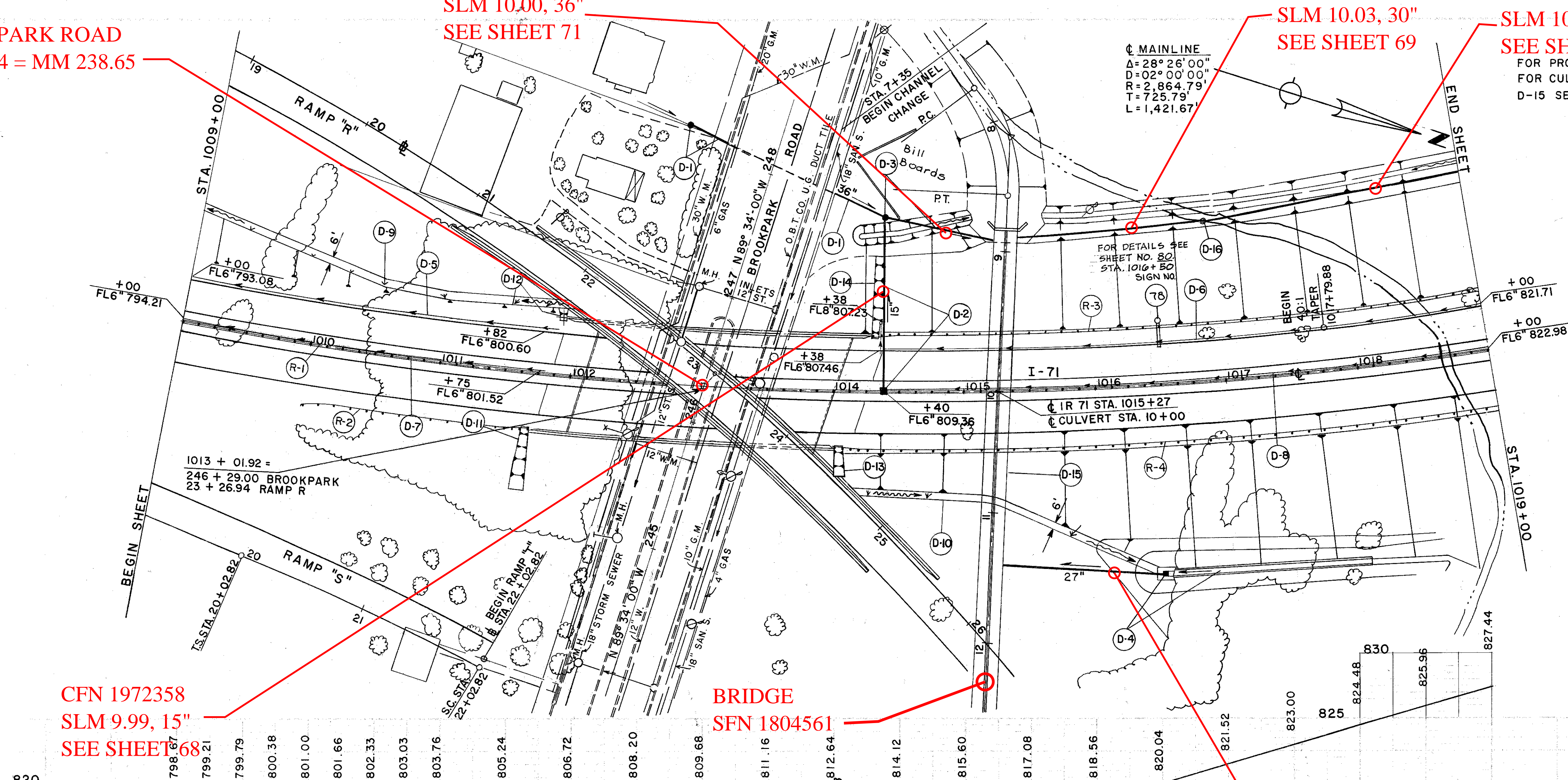
SLM 10.06, 30"
SEE SHEET 69

FOR PROFILE OF STORM SEWER SEE SHEET 68, 69, 871
FOR CULVERT AND CHANNEL RELOCATION
D-15 SEE SHEETS 73 TO 77

FED. RD. DIVISION 2	STATE OHIO	PROJECT	FISCAL YEAR
------------------------	---------------	---------	-------------

19
163

CUYAHOGA COUNTY
CUY - 71 - 9.60



(D) DRAINAGE

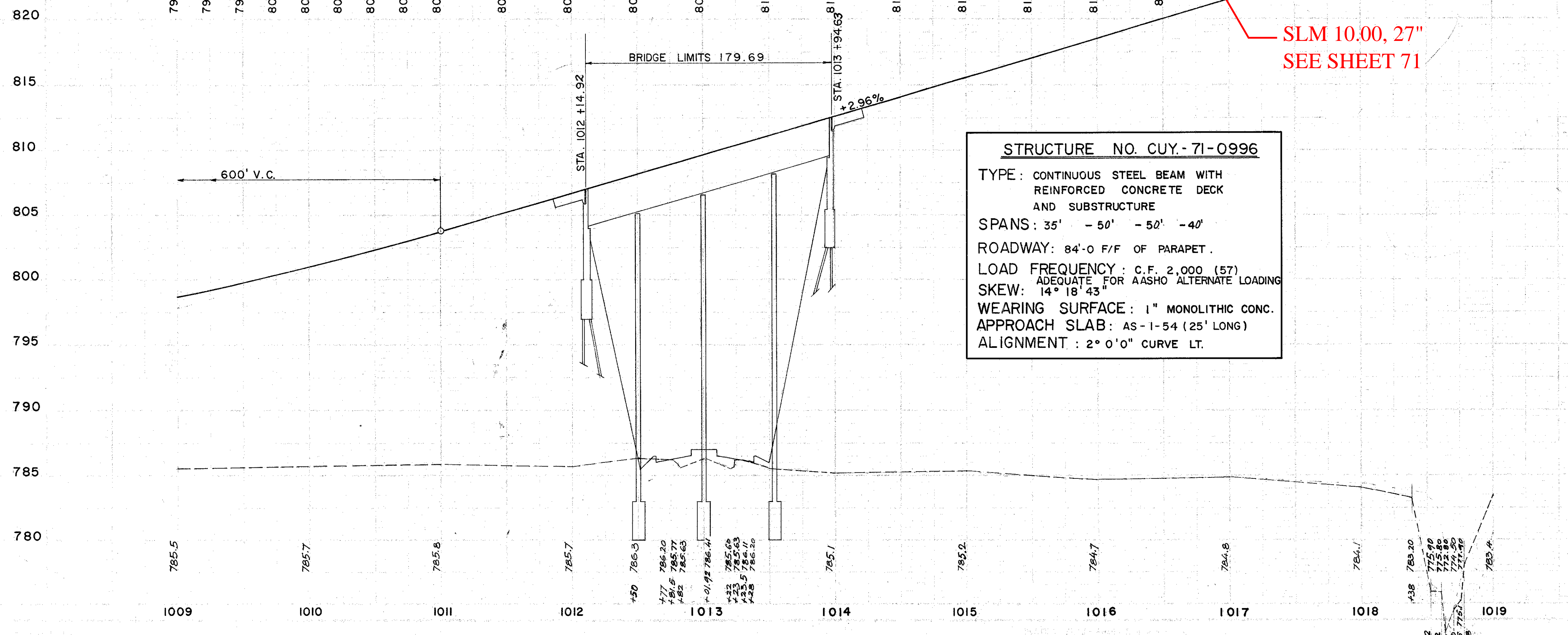
REF. NO.	DESCRIPTION	UNIT	QUANTITY
L-10	SPECIAL BERM AND SLOPE PROTECTION	SY	49
L-120	JUTE MATTING	SY	7
L-10	SODDING	SY	20
I-5	15" X 25° BEND CLASS F-4	EACH	2
I-5	6" X 90° BEND CLASS F-4	EACH	1
I-8	STD. NO. 1 MANHOLE	EACH	1
I-8	STD. NO. 5 CATCH BASIN	EACH	1
I-8	MOD. # 2-A-B PAVED SHOULDER INLET	EACH	1
I-1	36" PIPE CLASS J-1	LN. FT.	294.53
I-1	36" PIPE CLASS E-1	LN. FT.	84
I-1	27" PIPE CLASS I-1 SEC. M-6.4(d) GAGE I2	LN. FT.	126
I-1	15" PIPE CLASS F-4	LN. FT.	88
I-1	15" PIPE CLASS J-1	LN. FT.	46
I-1	8" PIPE CLASS F-4	LN. FT.	10
I-1	6" PIPE CLASS F-4	LN. FT.	10
I-1	6" PIPE CLASS I-3	LN. FT.	10
SIDE		LT.	55.2
SIDE		RT.	55.2
TOTAL			1133

STATION	FROM	TO	CULVERT	EA.	TOTAL
D-16	1019+00	1019+00	1	1	1
TOTAL					1

CFN 1972358
SLM 9.99, 15"
SEE SHEET 68

BRIDGE
SFN 1804561

SLM 10.00, 27"
SEE SHEET 71



STRUCTURE NO. CUY-71-0996
 TYPE: CONTINUOUS STEEL BEAM WITH REINFORCED CONCRETE DECK AND SUBSTRUCTURE
 SPANS: 35' - 50' - 50' - 40'
 ROADWAY: 84'-0" F/F OF PARAPET.
 LOAD FREQUENCY: C.F. 2,000 (57)
 ADEQUATE FOR AASHO ALTERNATE LOADING
 SKEW: 14° 18' 43"
 WEARING SURFACE: 1" MONOLITHIC CONC.
 APPROACH SLAB: AS-1-54 (25' LONG)
 ALIGNMENT: 2° 0' 0" CURVE LT.

REF. NO.	DESCRIPTION	UNIT	QUANTITY
R-1	1009+00 TO 1011+95	LN. FT.	195
R-2	1011+95 TO 1019+00	LN. FT.	482
R-3	1014+18 TO 1019+00	LN. FT.	507
R-4	1013+92 TO 1019+00	LN. FT.	502
TOTAL			1686

PLAN & PROFILE-STA.1009+00 TO STA.1019+00

* DENOTES CLEVELAND FUNDS