

SLM 8.52 (IR-480)=  
 SLM 10.07 (IR-71), 30"  
 SEE SHEET 69

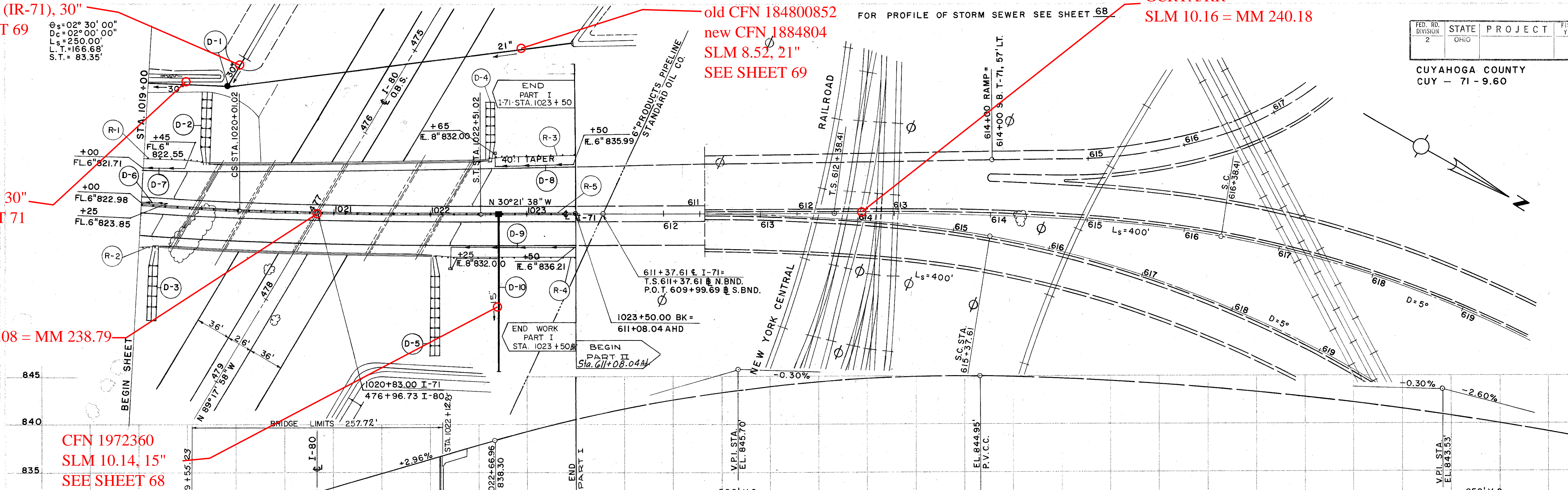
SLM 10.06, 30"  
 SEE SHEET 71

IR-480  
 SLM 10.08 = MM 238.79

old CFN 184800852  
 new CFN 1884804  
 SLM 8.52, 21"  
 SEE SHEET 69

FOR PROFILE OF STORM SEWER SEE SHEET 68

GCRTA/RR  
 SLM 10.16 = MM 240.18



CFN 1972360  
 SLM 10.14, 15"  
 SEE SHEET 68

**STRUCTURE NO. CUY - 71-1011**  
 TYPE: CONTINUOUS STEEL BEAM WITH REINFORCED CONCRETE DECK AND SUBSTRUCTURES.  
 SPANS: 52'-0" - 74'-6" - 74'-6" - 52'-0"  
 ROADWAY: S.B. - VARIES AS SHOWN  
 N.B. 42'-0"  $\phi$  TO FACE OF PARAPET  
 LOAD FREQUENCY: C.F. 2,000 (57) ADEQUATE FOR AASHO ALTERNATE LOADING  
 SKEW: 29°55'55"  
 WEARING SURFACE: 1" MONOLITHIC CONCRETE  
 APPROACH SLAB: AS-1-54 (25' LONG)  
 ALIGNMENT: 2°0' CURVE LEFT.

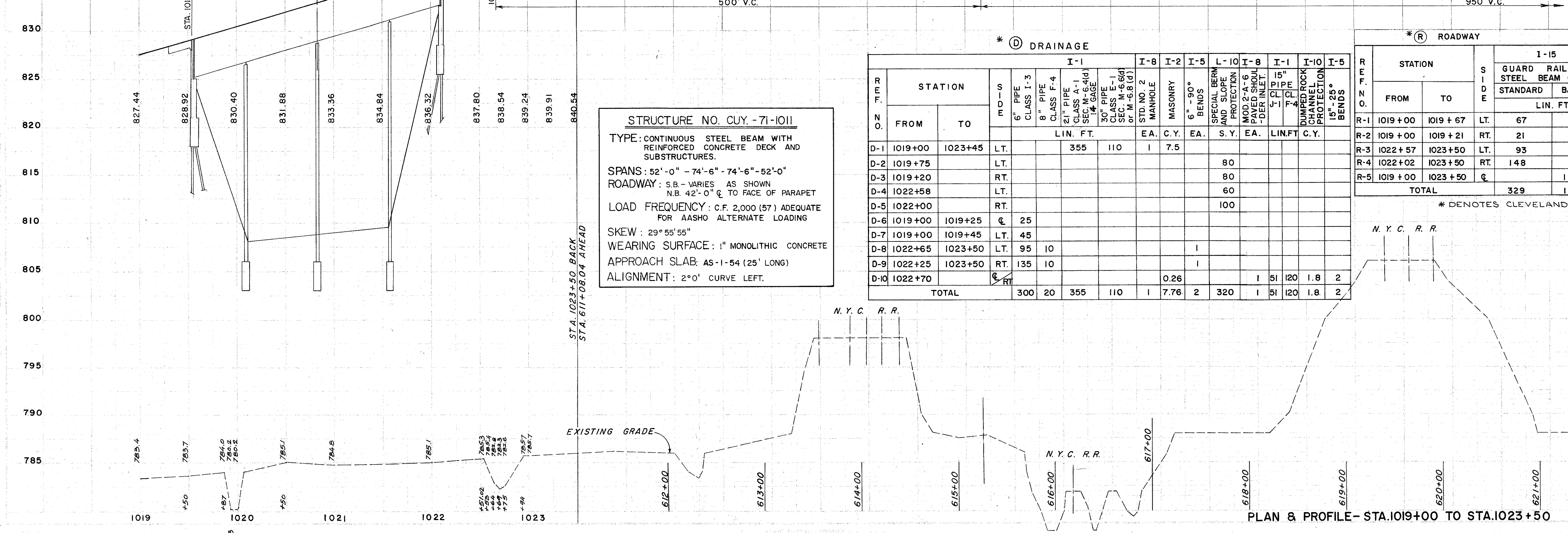
**\* (D) DRAINAGE**

STATION	I-1		I-8	I-2	I-5	L-10	I-8	I-1	I-10	I-5
	FROM	TO	EA.	C.Y.	EA.	S.Y.	EA.	LIN.FT	C.Y.	EA.
D-1	1019+00	1023+45	1	7.5						
D-2	1019+75					80				
D-3	1019+20					80				
D-4	1022+58					60				
D-5	1022+00					100				
D-6	1019+00	1019+25								
D-7	1019+00	1019+45								
D-8	1022+65	1023+50								
D-9	1022+25	1023+50								
D-10	1022+70									
<b>TOTAL</b>										

**\* (R) ROADWAY**

STATION	I-15		SIDE	LIN. FT	
	FROM	TO		STANDARD	BARRIER
R-1	1019+00	1019+67	LT.	67	
R-2	1019+00	1019+21	RT.	21	
R-3	1022+57	1023+50	LT.	93	
R-4	1022+02	1023+50	RT.	148	
R-5	1019+00	1023+50	C		191.42
<b>TOTAL</b>				<b>329</b>	<b>191.42</b>

\* DENOTES CLEVELAND FUNDS



PLAN & PROFILE - STA. 1019+00 TO STA. 1023+50