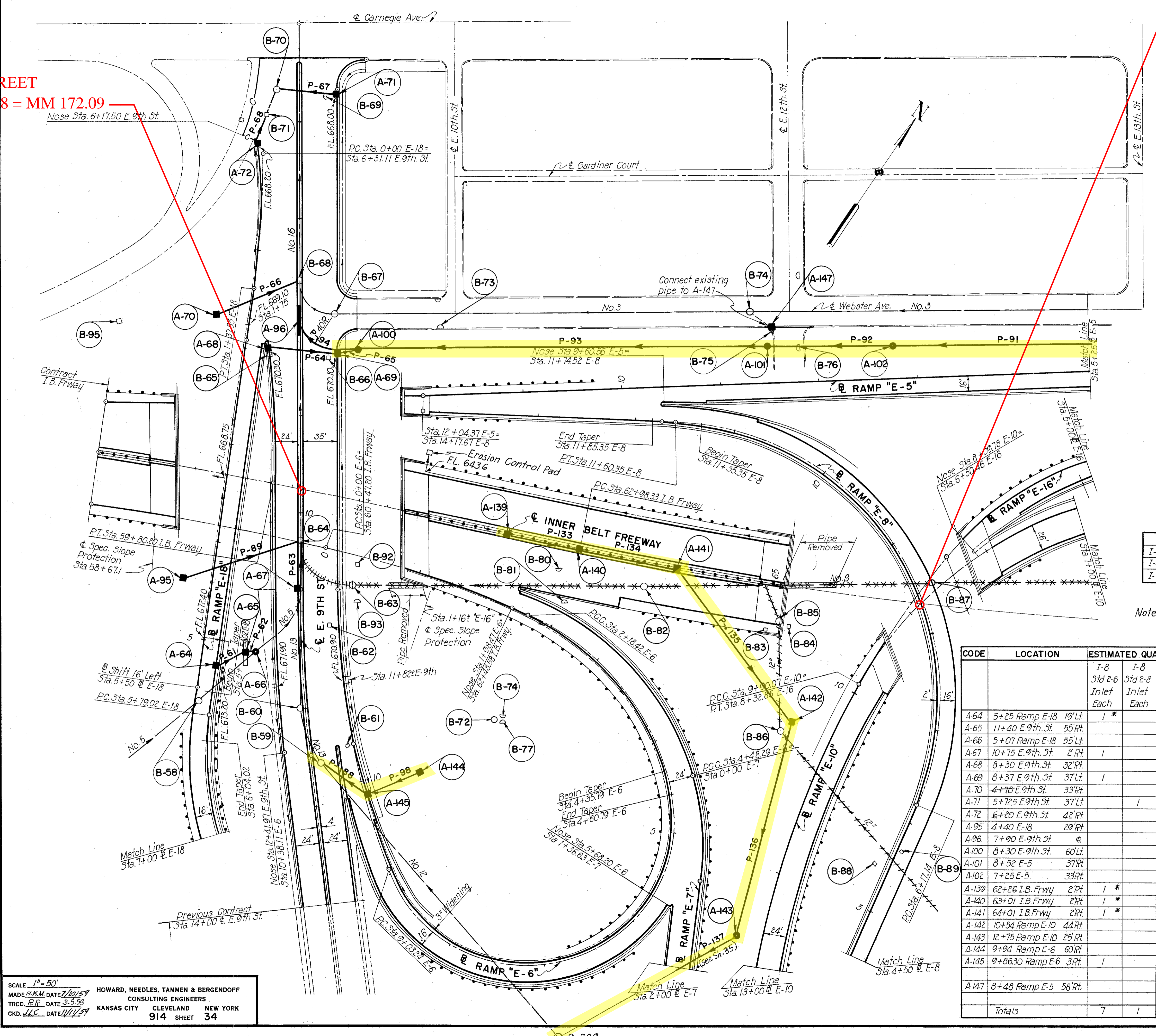


CUYAHOGA COUNTY  
CITY OF CLEVELAND  
CUY-42-18.29  
DRAINAGE PLAN

E. 9th STREET  
SLM 16.28 = MM 172.09

RAMP  
SLM 16.40 = MM 172.21



CODE	LOCATION	FROM	TO	ESTIMATED QUANTITIES-PIPES								
				I-2 12" Class B L.F.	I-2 12" B-UP L.F.	I-2 6.6" B-UP M-6.6(C) L.F.	I-2 6.6" B-UP M-10.6.6(C) L.F.	I-2 6.6" B-UP M-10.6.6(C) L.F.	Special No.9 Sand Filled L.F.	I-2 15" Class B L.F.	I-2 15" B-UP L.F.	
P61	Ramp E-18	A-64	A-65	28								
P62	Ramp E-18	A-65	A-66	6								
P63	East 9th St.	A-67	B-64		42							
P64	East 9th St.	A-68	A-69		68							
P65	East 9th St.	A-69	A-100		20							
P66	East 9th St.	A-70	B-68		88							
P67	East 9th St.	A-71	B-70		66							
P68	East 9th St.	A-72	B-71		24							
P88	East 9th St.	A-145	B-59								54	
P89	Ramp E-18	A-95	B-64		122							
P92	Ramp E-5	A-102	A-101			122						
P93	Ramp E-5	A-101	A-100				416					
P94	Ramp E-5	A-100	A-96				14	40				
P98	Ramp E-6	A-144	A-145								56	
P133	I.B. Freeway	B-87	B-63						585			
P134	I.B. Freeway	A-139	A-140			72						
P135	I.B. Freeway	A-140	A-141			98						
P136	Ramp E-10	A-141	A-142			192						
P136	I.B. Freeway	A-84	B-87		226							
Totals					34	792	122	430	40	1200	56	54

\* Sec. M-6.6(c)

ESTIMATED QUANTITIES-UNDERDRAINS		
I-4, 6" Underdrain Pipe	LF	3313
I-4, 8" C.M.P. Outlet For Underdrains	LF	20
I-5, 6" Pipe Special	Each	3

Note: Inlets noted thus \* are Standard No. 2-6-A Inlets.

ESTIMATED QUANTITIES, INLETS, C.B. & M.H.				
CODE	LOCATION	I-8 MH adj to Grade Each	I-16 MH Aban. Each	I-16 Inlet Aban. Each
B-58	5+65 E-18	3 Lt		
B-59	12+57 E 9th St.	10 Lt		
B-60	12+00 E 9th St.	4 Rt		
B-61	12+41 E 9th St.	39 Lt		
B-62	11+17 E 9th St.	29 Lt		
B-63	10+74 E 9th St.	53 Lt		
B-64	10+28 E 9th St.	4		
B-65	2+03 E 18th	27 Lt		
B-66	8+40 E 9th St.	30 Lt		
B-67	7+95 E 9th St.	35 Lt		
B-68	7+62 E 9th St.	4		
B-69	5+74 E 9th St.	27 Lt		
B-70	5+67 E 9th St.	22 Rt		
B-71	5+94 E 9th St.	33 Rt		
B-73	11+82 E-5	68 Rt		
B-75	8+49 E-5	54 Rt		
B-76	8+18 E-5	35 Rt		
B-72	2+36 E-6	112 Rt		
B-78	6+56 E-5	25 Rt		
B-74	2+44 E-6	102 Rt		
B-80	62+84 Frwy	25 Rt		
B-81	62+95 Frwy	57 Rt		
B-82	63+72 Frwy	25 Rt		
B-83	64+99 Frwy	47 Rt		
B-84	65+20 Frwy	41 Rt		
B-85	65+09 Frwy	37 Rt		
B-86	65+30 Frwy	149 Rt		
B-87	66+58 Frwy	22 Lt		
B-88	5+46 E-8	16 Lt		
B-89	5+72 E-8	3 Rt		
B-92	10+54 E 9th St	59 Lt		
B-93	10+92 E 9th St	58 Lt		
B-94	7+00 E-8	100 Rt		
B-95	1+87 E-18	129 Rt		
B-77	2+50 E-6	110 Rt		
Totals		5	9	21

CODE	LOCATION	ESTIMATED QUANTITIES, INLETS, CATCH BASINS, MANHOLES									
		I-8 Std 2-6 Inlet Each	I-8 Std 2-8 Inlet Each	I-8 Std 3-A C.B. Each	I-8 Std 2-2-A C.B. Each	I-8 Std #2 M.H. Each	I-8 Junc. Cham. Each	I-8 Std #3 C.B. Each	I-14 Paved Apron Lin. Ft.		
A-64	5+25 Ramp E-18	19 Lt									
A-65	11+40 E 9th St.	55 Rt									
A-66	5+07 Ramp E-18	55 Lt									
A-67	10+75 E 9th St.	2 Rt									
A-68	8+30 E 9th St.	32 Rt									
A-69	8+37 E 9th St.	37 Lt									
A-70	4+70 E 9th St.	33 Rt									
A-71	5+72 E 9th St.	37 Lt									
A-72	6+20 E 9th St.	42 Rt									
A-95	4+40 E-18	29 Rt									
A-96	7+90 E 9th St.	4									
A-100	8+30 E 9th St.	60 Lt									
A-101	8+52 E-5	37 Rt									
A-102	7+25 E-5	33 Rt									
A-139	62+26 I.B. Frwy	2 Rt									
A-140	63+01 I.B. Frwy	2 Rt									
A-141	64+01 I.B. Frwy	2 Rt									
A-142	10+54 Ramp E-10	41 Rt									
A-143	12+75 Ramp E-10	25 Rt									
A-144	9+94 Ramp E-6	60 Rt									
A-145	9+86.30 Ramp E-6	3 Rt									
A-147	8+48 Ramp E-5	58 Rt									
Totals		7	1	2	5	5	1			20	