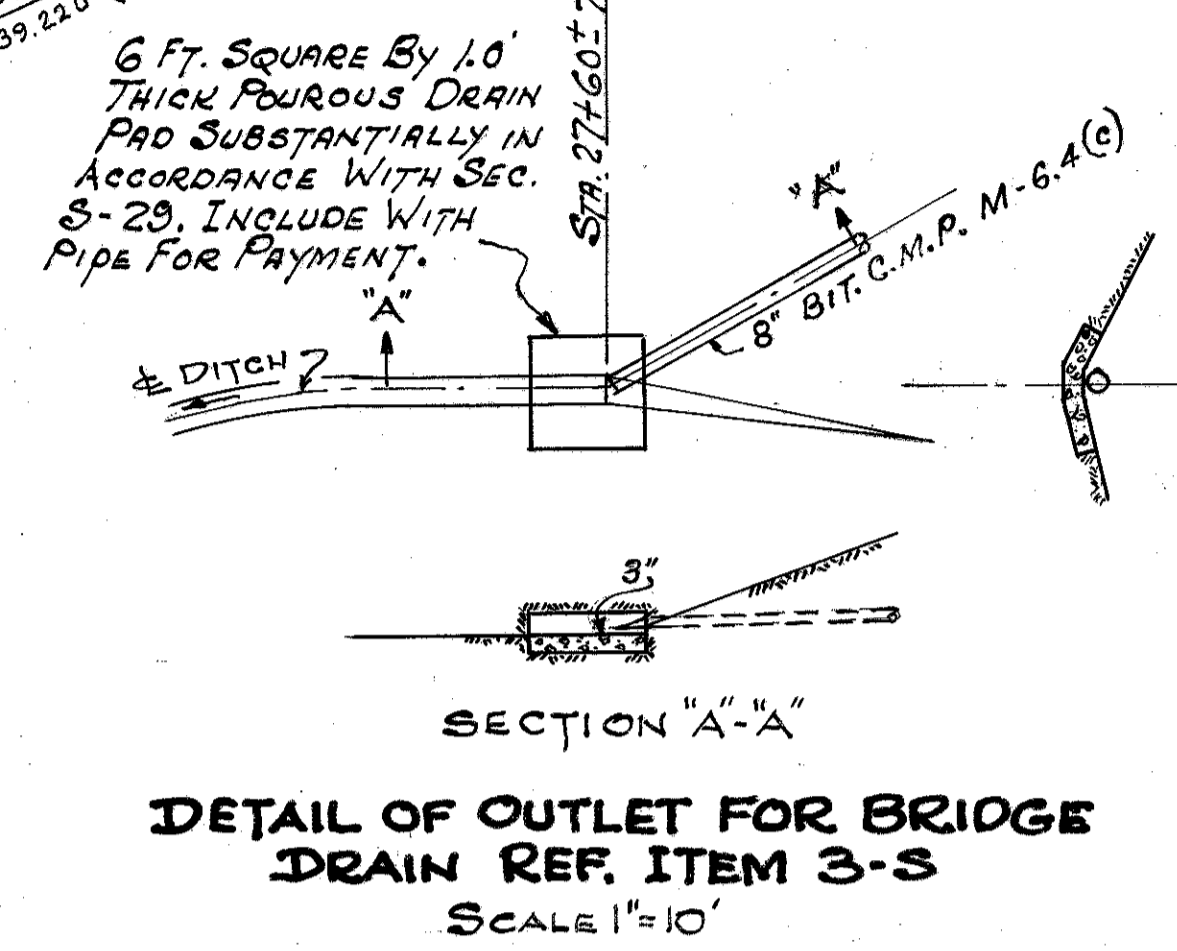
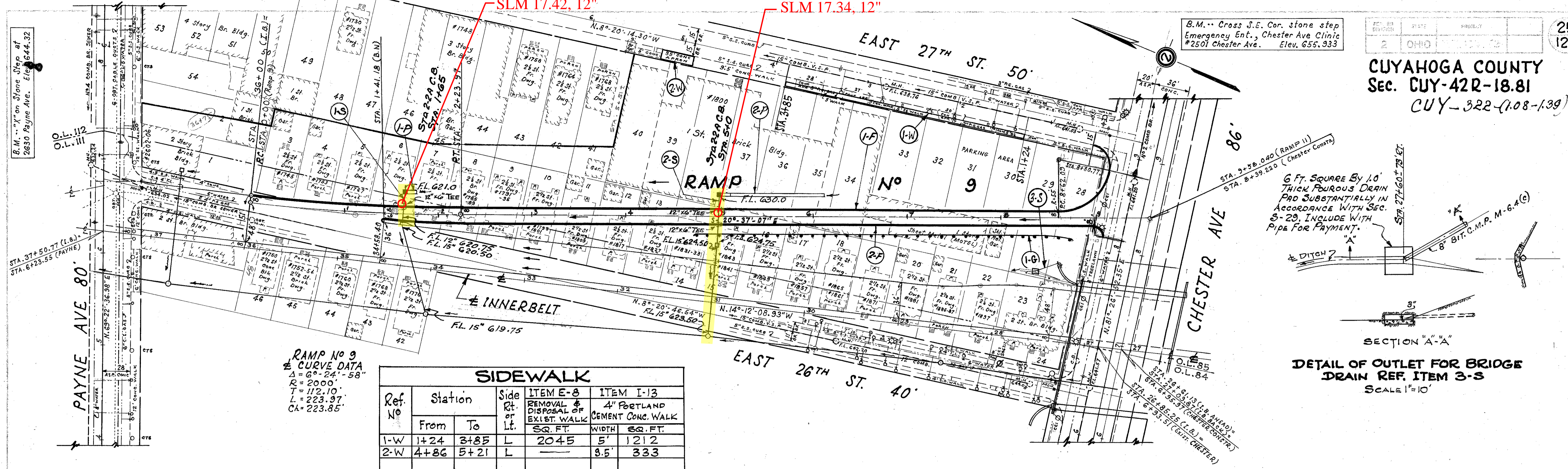


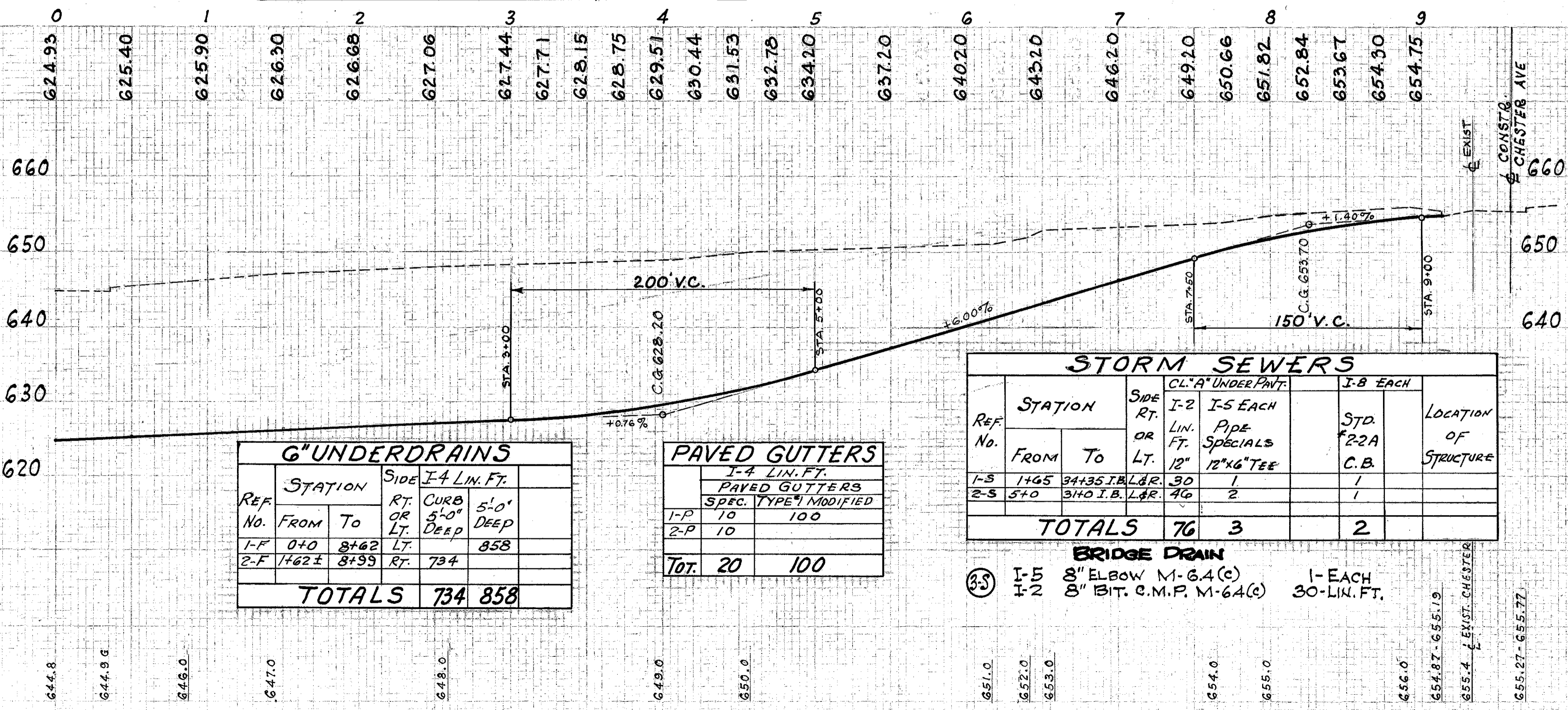
B.M. ... Cross S.E. Cor. stone step  
Emergency Ent., Chester Ave Clinic  
#2501 Chester Ave. Elev. 655.933



RAMP No 9  
± CURVE DATA  
Δ = 6°-24'-58"  
R = 2000'  
T = 112.10'  
L = 223.97'  
CA = 223.85'

Ref. No.		Station		Side	ITEM E-8	ITEM I-13
		From	To	Rt. or Lt.	REMOVAL & DISPOSAL OF EXIST. WALK SQ. FT.	4" PORTLAND CEMENT CONC. WALK WIDTH SQ. FT.
1-W		1+24	3+85	L	2045	5' 1212
2-W		4+86	5+21	L		8.5' 333
<b>TOTAL</b>					<b>2045</b>	<b>1545</b>

Station & Drive	ITEM E-8		ITEM E-9		ITEM E-10		ITEM L-3	
	SQ. YDS.	LIN. FT.	SQ. YDS.	LIN. FT.	SQ. YDS.	LIN. FT.	SQ. YDS.	LIN. FT.
E-27 2+05	L	26.9	L	30	5			
E-27 3+08	L	28.5	L	27	6			
E-27 3+60	L	29.7	L	28	6			
E-27 5+03	L	36.9	L	35	11	75		
<b>TOTAL</b>				<b>122</b>	<b>120</b>	<b>34</b>	<b>75</b>	



REF. No.		STATION		Side	I-4 LIN. FT.
		From	To	Rt. or Lt.	5'-0" DEEP
1-F		0+0	3+62	Lt.	858
2-F		1+62	3+99	Rt.	734
<b>TOTALS</b>					<b>734 858</b>

REF. No.		STATION		Side	I-4 LIN. FT.
		From	To	Rt. or Lt.	5'-0" DEEP
1-P		10			100
2-P		10			100
<b>Tot.</b>					<b>20 100</b>

REF. No.		STATION		Side	I-2 LIN. FT.	I-5 EACH	I-5 SPECIALS	STO. 22A	LOCATION OF STRUCTURE
		From	To	Rt. or Lt.	12" 12"x6" TEE	12" 12"x6" TEE			
1-S		1+65	3+35	Lt.	30	1			
2-S		5+0	3+0	I.B. Lt.	46	2			
<b>TOTALS</b>					<b>76</b>	<b>3</b>		<b>2</b>	

BRIDGE DRAIN  
 ③ I-1 8" ELBOW M-64(C) 1-EACH  
 I-2 8" BIT. C.M.P. M-64(C) 30-LIN. FT.

REF. No.		STATION		Side	I-5 GUARD RAIL, ST. BEAM TYPE
		From	To	Rt. or Lt.	400
1-G		4+75	3+75	R	400
<b>TOTALS</b>					<b>400</b>

REF. No.		STATION		Side	I-4 LIN. FT.	I-5 EACH
		From	To	Rt. or Lt.	CURB SHAL-LW OUTLETS FOR UNDERDRAINS	6" PIPE SPECIALS TEE ELBOW
1-F		0+10	0+15	Lt.	130	
2-F		0+35	1+61	Lt.	92	36
3-F		0+59	1+61	Rt.	102	
8-F		12+05	13+10	Lt.	104	
11-F		11+81	12+96	Rt.	90	2
<b>URBAN-TOTALS</b>					<b>518</b>	<b>92 2</b>
3-F		1+61	6+28	Rt.	466	
4-F		2+35	6+20	Lt.	384	
5-F		2+0	6+24	Lt.	426	6 1
6-F		2+25	6+26	Rt.	398	6 1
7-F		7+62	8+09	Lt.	46	10 2
8-F		9+51	12+05	Lt.	258	
9-F		7+70	9+60	Rt.	190	
10-F		10+34	11+39	Rt.	94	
12-F		7+66	11+80	Lt.	412	6 1
13-F		7+68	11+40	Rt.	370	6 1
<b>INTERSTATE TOTALS</b>					<b>3038</b>	<b>34 4 2</b>